

A photograph of a modern, single-story industrial building with a white facade and large glass windows. The building is surrounded by landscaping, including bushes and a small tree. The number '907' is visible on the glass above the entrance. The image is partially overlaid with a dark grey semi-transparent shape in the upper right corner.

BR BLACK RIVER CORPORATE PARK

927 Thomas Ave SW / Renton, WA
Industrial For Lease



Contact information:

Andrew Stark
Executive Vice President
andrew.stark@cbre.com
+1 206 442 2746

Andrew Hitchcock
Executive Vice President
andrew.hitchcock@cbre.com
+1 206 442 2719

Zac Snedeker
Senior Vice President
zac.snedeker@cbre.com
+1 206 442 2709

CBRE

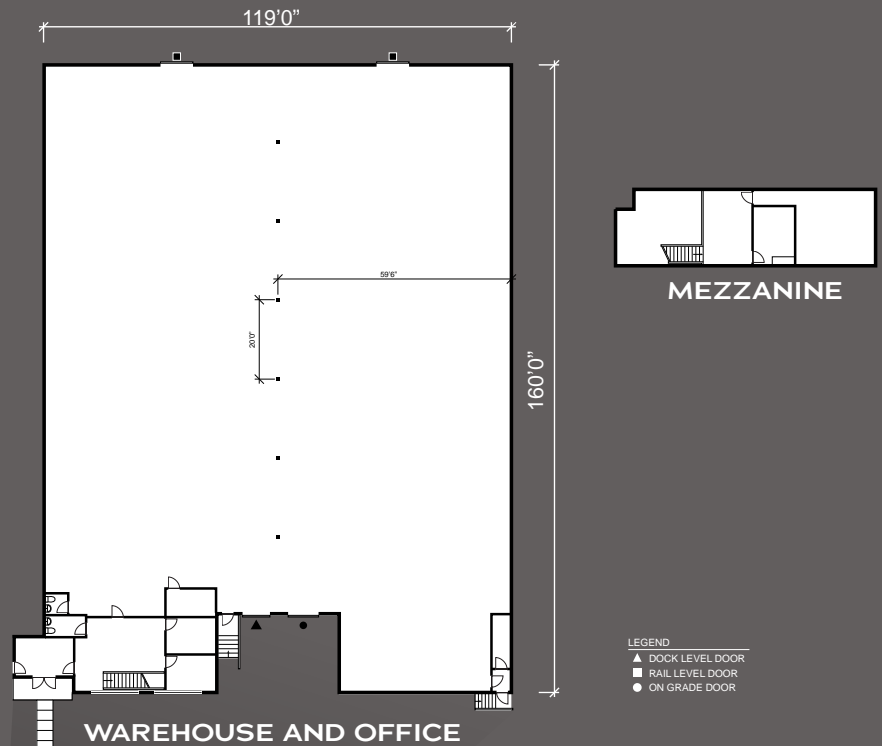


INDUSTRIAL FOR LEASE:

927 Thomas Ave SW

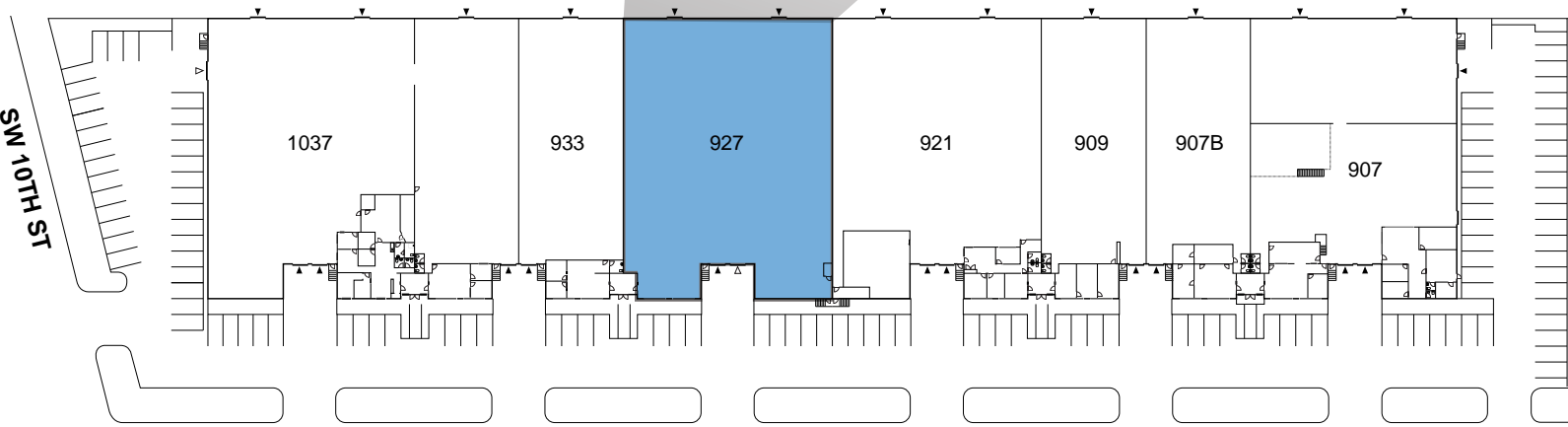
PROPERTY HIGHLIGHTS

- 19,400 SF Shell, 898 SF Office
- One dock door, One grade door
- 24' clear height
- Easy access to I-5, I-405, & SR 167
- Additional 1,294 SF Mezz Office Available
- Available June 1, 2026

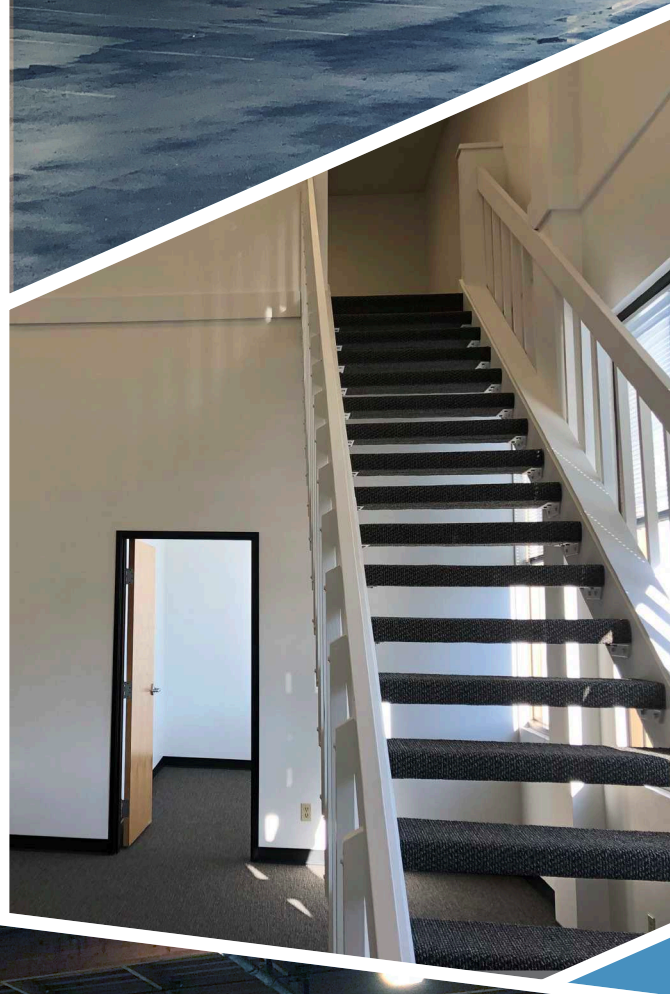


SITE PLAN:

▲ Dock Level Door △ On-Grade Door



THOMAS AVE SW





BR BLACK RIVER
CORPORATE PARK

Please contact the leasing team for information:

Andrew Stark

Executive Vice President

andrew.stark@cbre.com

+1 206 442 2746

Andrew Hitchcock

Executive Vice President

andrew.hitchcock@cbre.com

+1 206 442 2719

Zac Snedeker

Senior Vice President

zac.snedeker@cbre.com

+1 206 442 2709

CBRE

© 2026 CBRE, Inc. All rights reserved. This information has been obtained from sources believed reliable but has not been verified for accuracy or completeness. CBRE, Inc. makes no guarantee, representation or warranty and accepts no responsibility or liability as to the accuracy, completeness, or reliability of the information contained herein. You should conduct a careful, independent investigation of the property and verify all information. Any reliance on this information is solely at your own risk. CBRE and the CBRE logo are service marks of CBRE, Inc. All other marks displayed on this document are the property of their respective owners, and the use of such marks does not imply any affiliation with or endorsement of CBRE. Photos herein are the property of their respective owners. Use of these images without the express written consent of the owner is prohibited.