

AUBURN PARK 277



*Industrial Space
For Lease*

39,724 SF

TOTAL

2,981 SF

OFFICE

30'

CLEAR HEIGHT

39,724 SF total with 2,981 SF office

ESFR sprinkler system

All doors with EOD levelers & trailer locks

11 dock-high doors, 1 grade-level door

Immediate access to SR-167 and quick I-5 access

Excellent corner location with plenty of parking

30' clear height

Available August 1, 2026

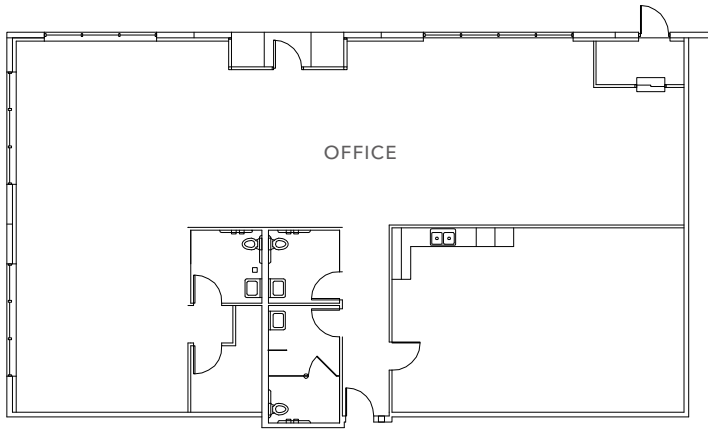
DOUG KLEIN, SIOR
Executive Vice President
206.248.7348
doug.klein@kidder.com

TRAVIS STANAWAY
Senior Vice President
206.248.6526
travis.stanaway@kidder.com

KIDDER.COM

This information supplied herein is from sources we deem reliable. It is provided without any representation, warranty, or guarantee, expressed or implied as to its accuracy. Prospective Buyer or Tenant should conduct an independent investigation and verification of all matters deemed to be material, including, but not limited to, statements of income and expenses. Consult your attorney, accountant, or other professional advisor.

SUITE 102 | FLOOR PLAN



39,724 SF

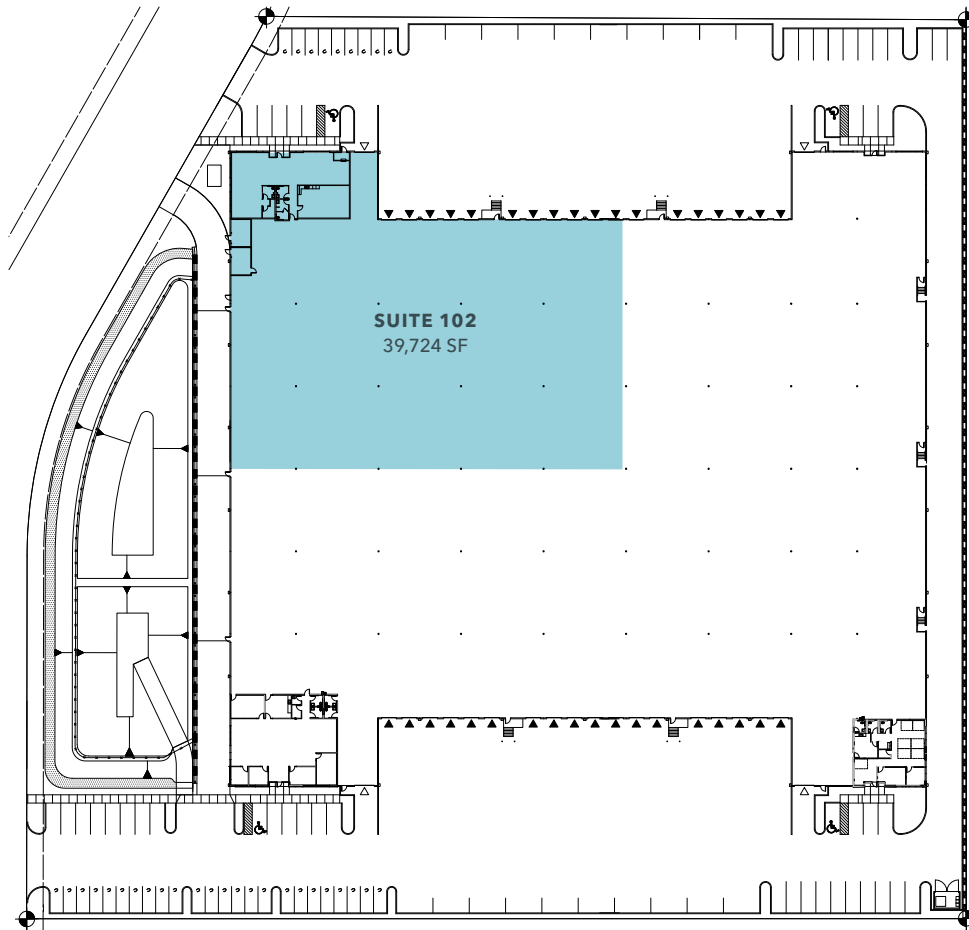
TOTAL AREA

2,981 SF

OFFICE AREA

8/1/26

AVAILABLE



KIDDER.COM

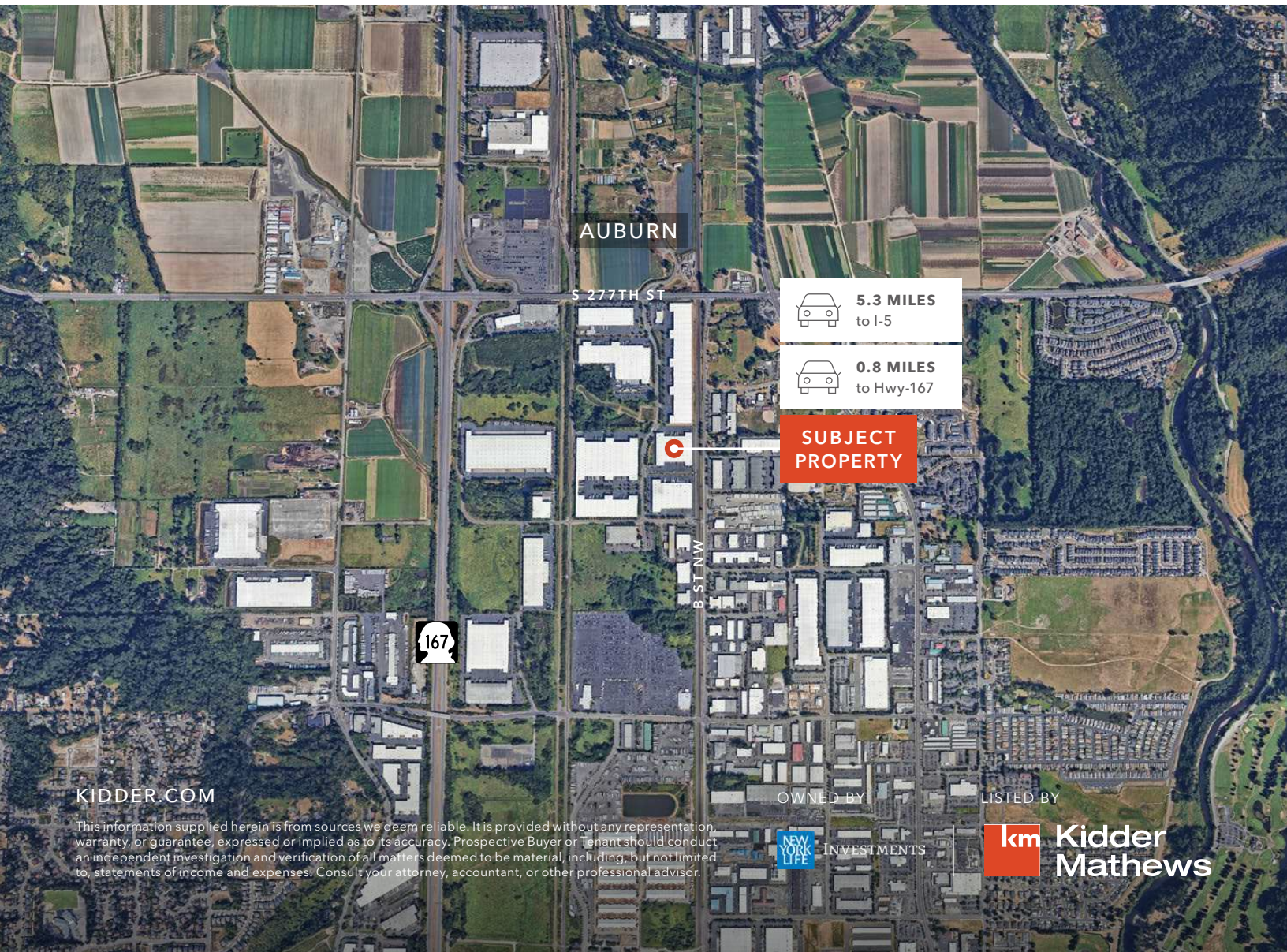
This information supplied herein is from sources we deem reliable. It is provided without any representation, warranty, or guarantee, expressed or implied as to its accuracy. Prospective Buyer or Tenant should conduct an independent investigation and verification of all matters deemed to be material, including, but not limited to, statements of income and expenses. Consult your attorney, accountant, or other professional advisor.

OWNED BY



LISTED BY





KIDDER.COM

This information supplied herein is from sources we deem reliable. It is provided without any representation, warranty, or guarantee, expressed or implied as to its accuracy. Prospective Buyer or Tenant should conduct an independent investigation and verification of all matters deemed to be material, including, but not limited to, statements of income and expenses. Consult your attorney, accountant, or other professional advisor.

OWNED BY



INVESTMENTS

LISTED BY

