

# AUBURN PARK 277



*Industrial Space  
For Lease*

*±79,871 SF*  
TOTAL

*±6,537 SF*  
OFFICE

*30'*  
CLEAR HEIGHT

79,871 SF total with 6,537 SF office in two nodes

ESFR sprinkler system

22 dock-high doors (17 EOD levelers & 11 trailer locks)

2 grade-level doors

Cross-dock layout, 303' building depth at loading doors

Ability to cut passthroughs in existing demising wall

Immediate access to SR-167 and quick I-5 access

Excellent corner location with plenty of parking

30' clear height

Available August 1, 2026

**DOUG KLEIN, SIOR**  
Executive Vice President  
206.248.7348  
doug.klein@kidder.com

**TRAVIS STANAWAY**  
Senior Vice President  
206.248.6526  
travis.stanaway@kidder.com

**KIDDER.COM**

This information supplied herein is from sources we deem reliable. It is provided without any representation, warranty, or guarantee, expressed or implied as to its accuracy. Prospective Buyer or Tenant should conduct an independent investigation and verification of all matters deemed to be material, including, but not limited to, statements of income and expenses. Consult your attorney, accountant, or other professional advisor.

# FLOOR PLAN

***±79,871 SF***

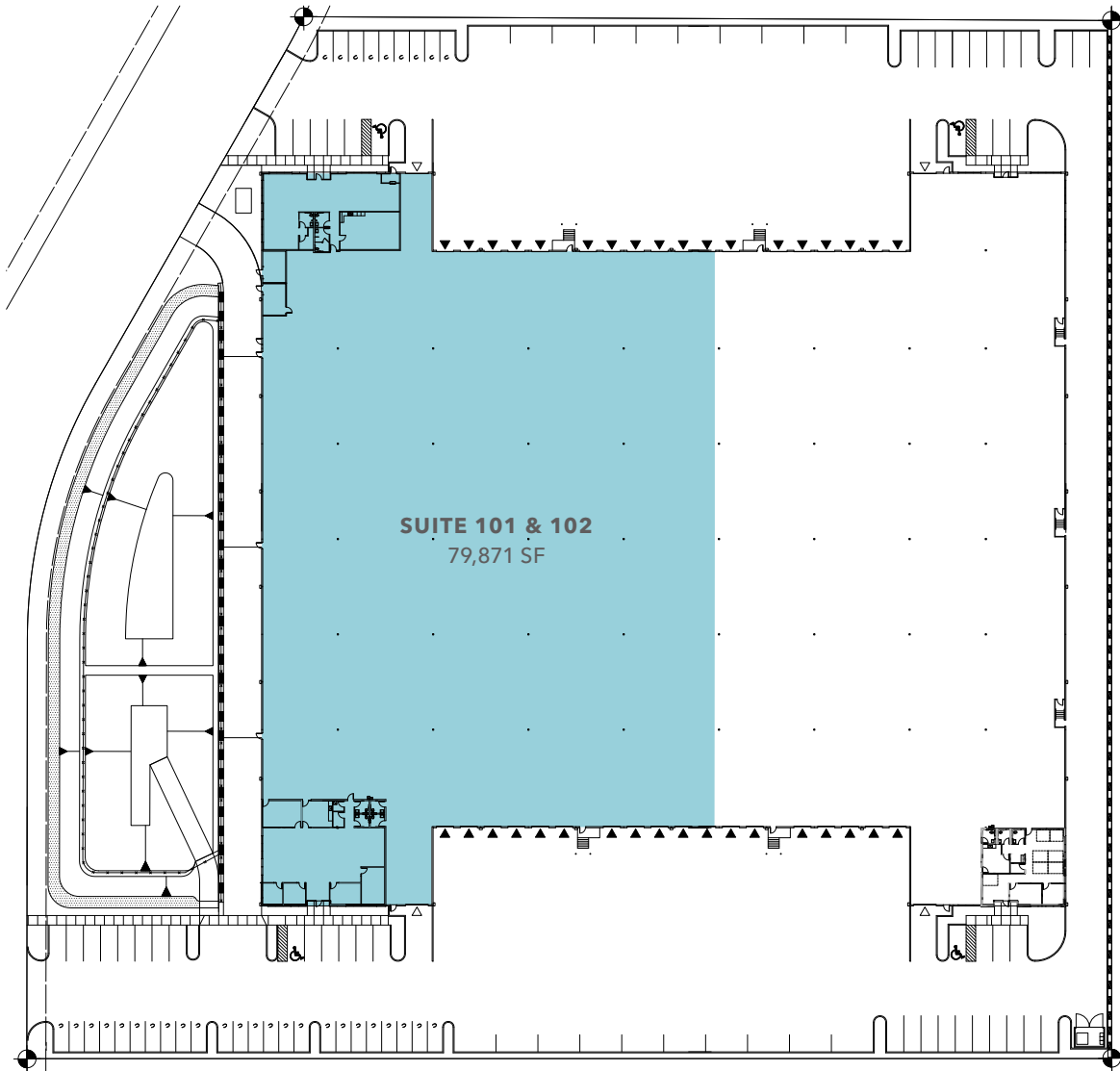
TOTAL AREA

***±6,537 SF***

OFFICE AREA

***8/1/26***

AVAILABLE



**KIDDER.COM**

This information supplied herein is from sources we deem reliable. It is provided without any representation, warranty, or guarantee, expressed or implied as to its accuracy. Prospective Buyer or Tenant should conduct an independent investigation and verification of all matters deemed to be material, including, but not limited to, statements of income and expenses. Consult your attorney, accountant, or other professional advisor.

OWNED BY



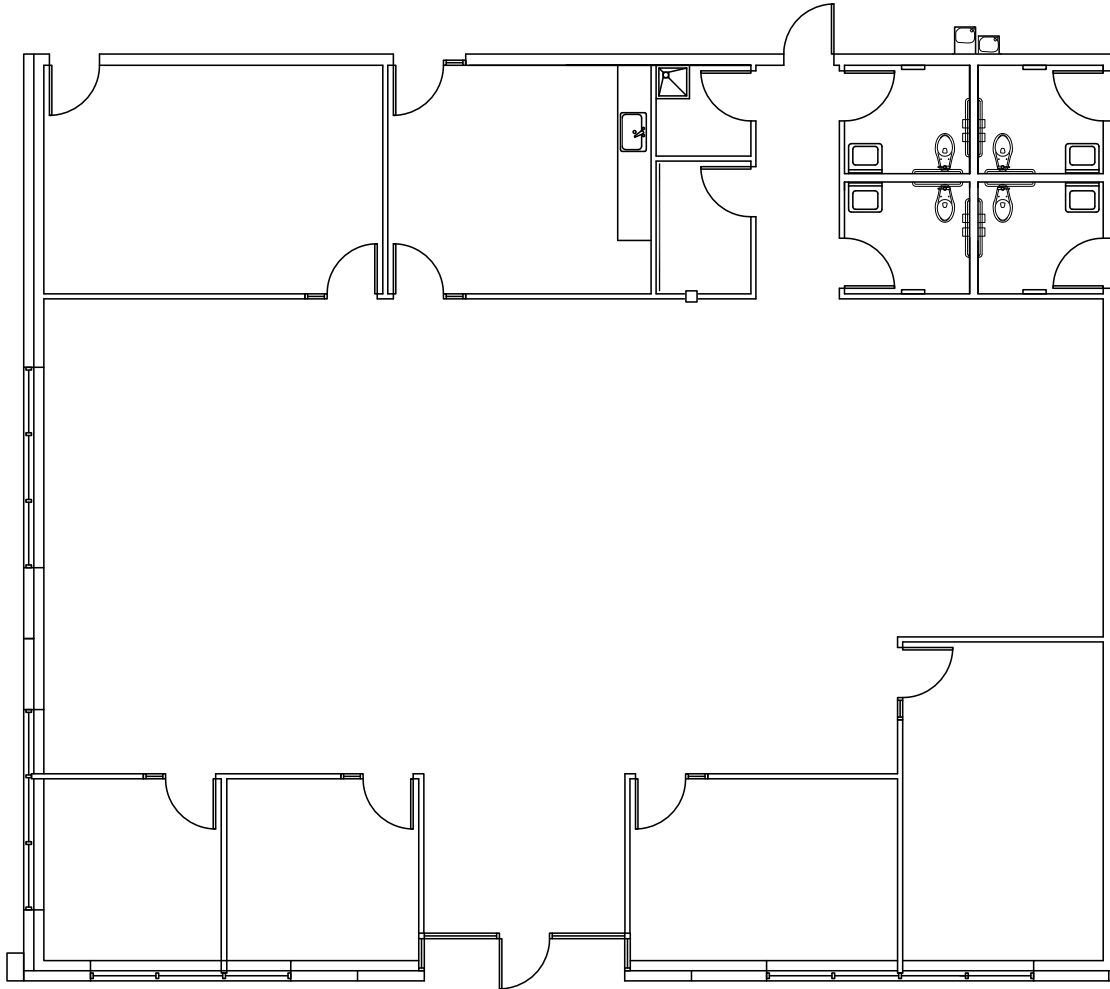
LISTED BY



# SUITE 101 OFFICE PLAN

*3,556 SF*

OFFICE AREA



**KIDDER.COM**

This information supplied herein is from sources we deem reliable. It is provided without any representation, warranty, or guarantee, expressed or implied as to its accuracy. Prospective Buyer or Tenant should conduct an independent investigation and verification of all matters deemed to be material, including, but not limited to, statements of income and expenses. Consult your attorney, accountant, or other professional advisor.

OWNED BY



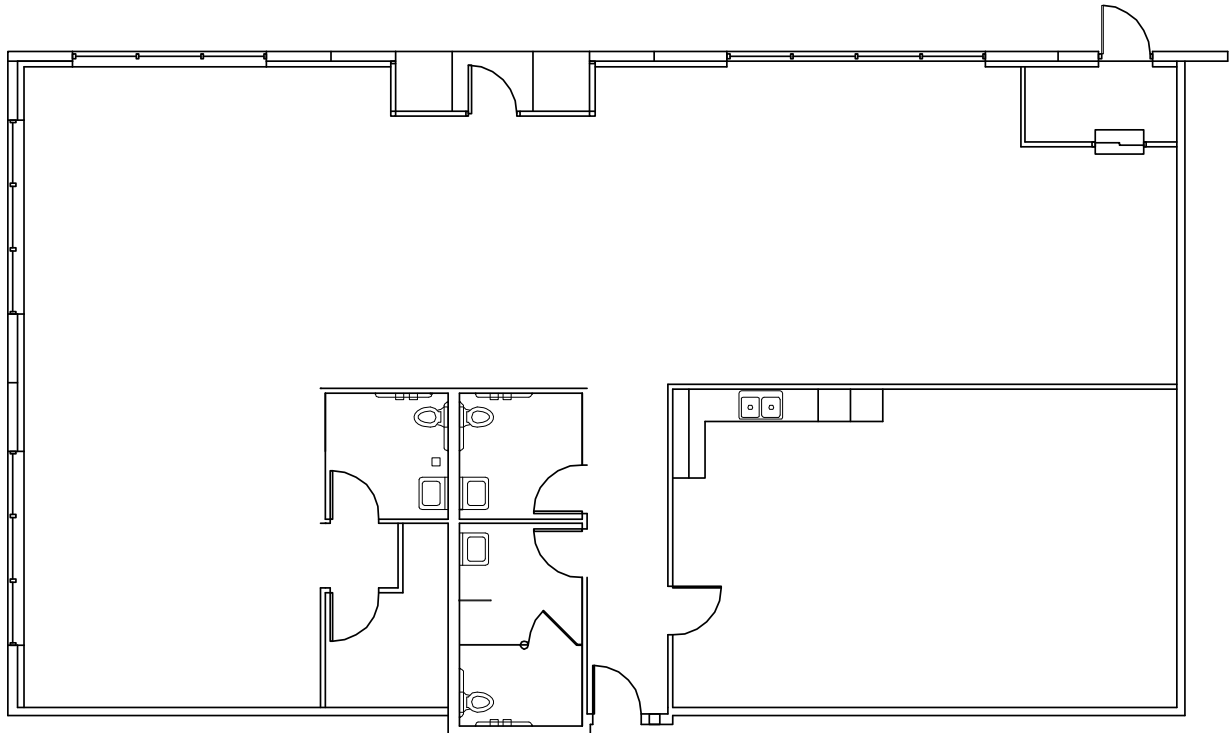
LISTED BY



# SUITE 102 OFFICE PLAN

2,981 SF

OFFICE AREA



[KIDDER.COM](http://KIDDER.COM)

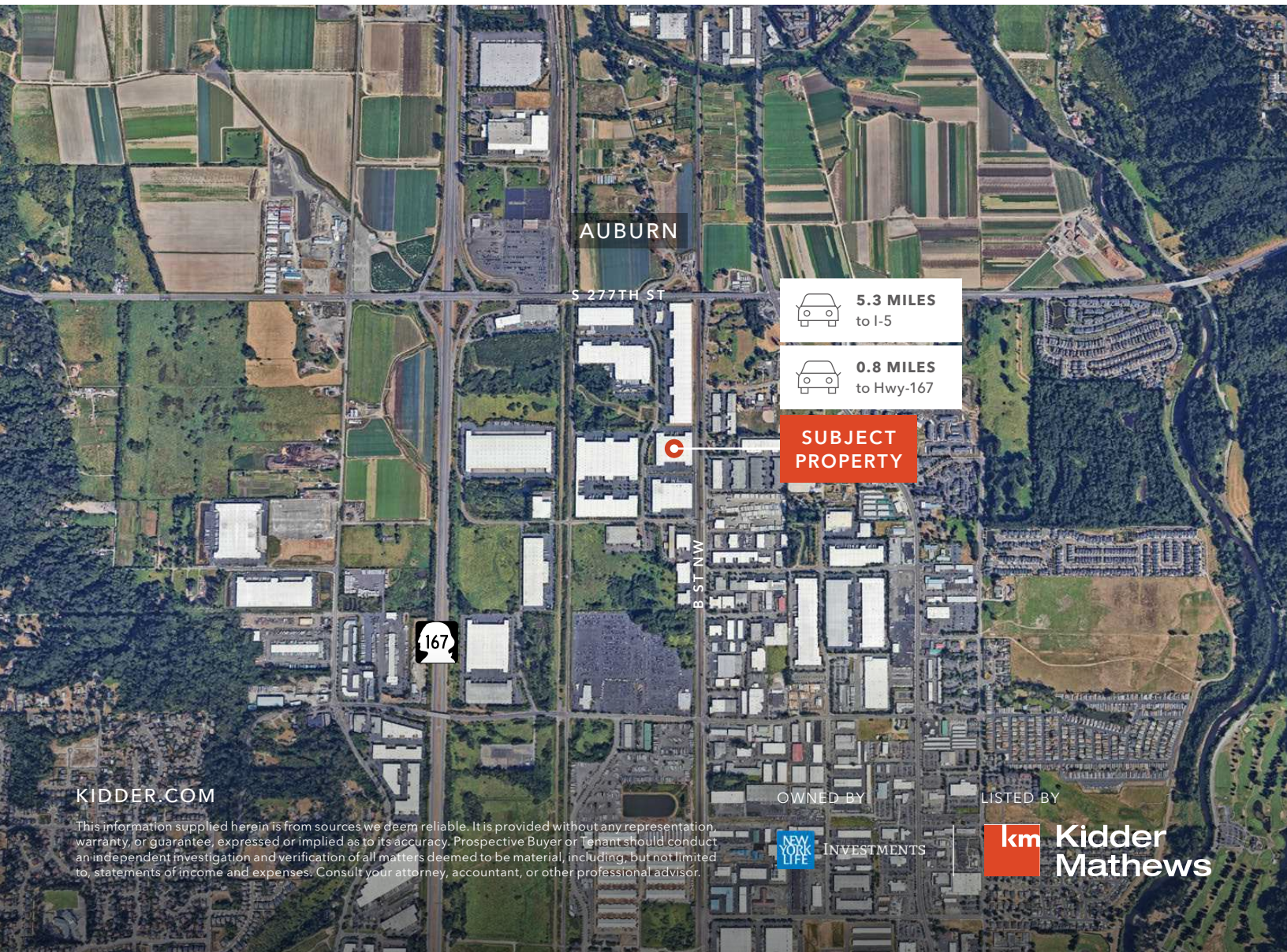
This information supplied herein is from sources we deem reliable. It is provided without any representation, warranty, or guarantee, expressed or implied as to its accuracy. Prospective Buyer or Tenant should conduct an independent investigation and verification of all matters deemed to be material, including, but not limited to, statements of income and expenses. Consult your attorney, accountant, or other professional advisor.

OWNED BY



LISTED BY





AUBURN

S 277TH ST

B ST NW



5.3 MILES  
to I-5



0.8 MILES  
to Hwy-167

**SUBJECT  
PROPERTY**

KIDDER.COM

This information supplied herein is from sources we deem reliable. It is provided without any representation, warranty, or guarantee, expressed or implied as to its accuracy. Prospective Buyer or Tenant should conduct an independent investigation and verification of all matters deemed to be material, including, but not limited to, statements of income and expenses. Consult your attorney, accountant, or other professional advisor.



INVESTMENTS

OWNED BY

LISTED BY



**Kidder  
Mathews**