



CBRE



BALLINGER COMMONS

19929 BALLINGER WAY NE, SHORELINE WA

BALLINGER COMMONS

AVAILABLE SPACE

SUITE 200 | 2,530 RSF

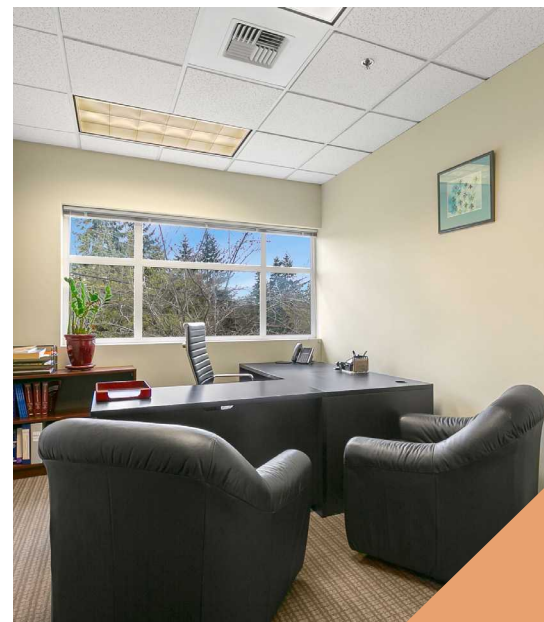
- Elevator served, for ADA accessibility
- 10 private offices
- Reception area
- Break room
- Conference room

PROPERTY FEATURES

- Two-Story Office/Medical Building, with frontage to Ballinger Way
- Building monument signage available
- Free on-site parking
- Situated on Ballinger Way, with Excellent Access to I-5
- On-site building ownership and property management

LEASE RATE

- \$22.00/SF/Year, NNN

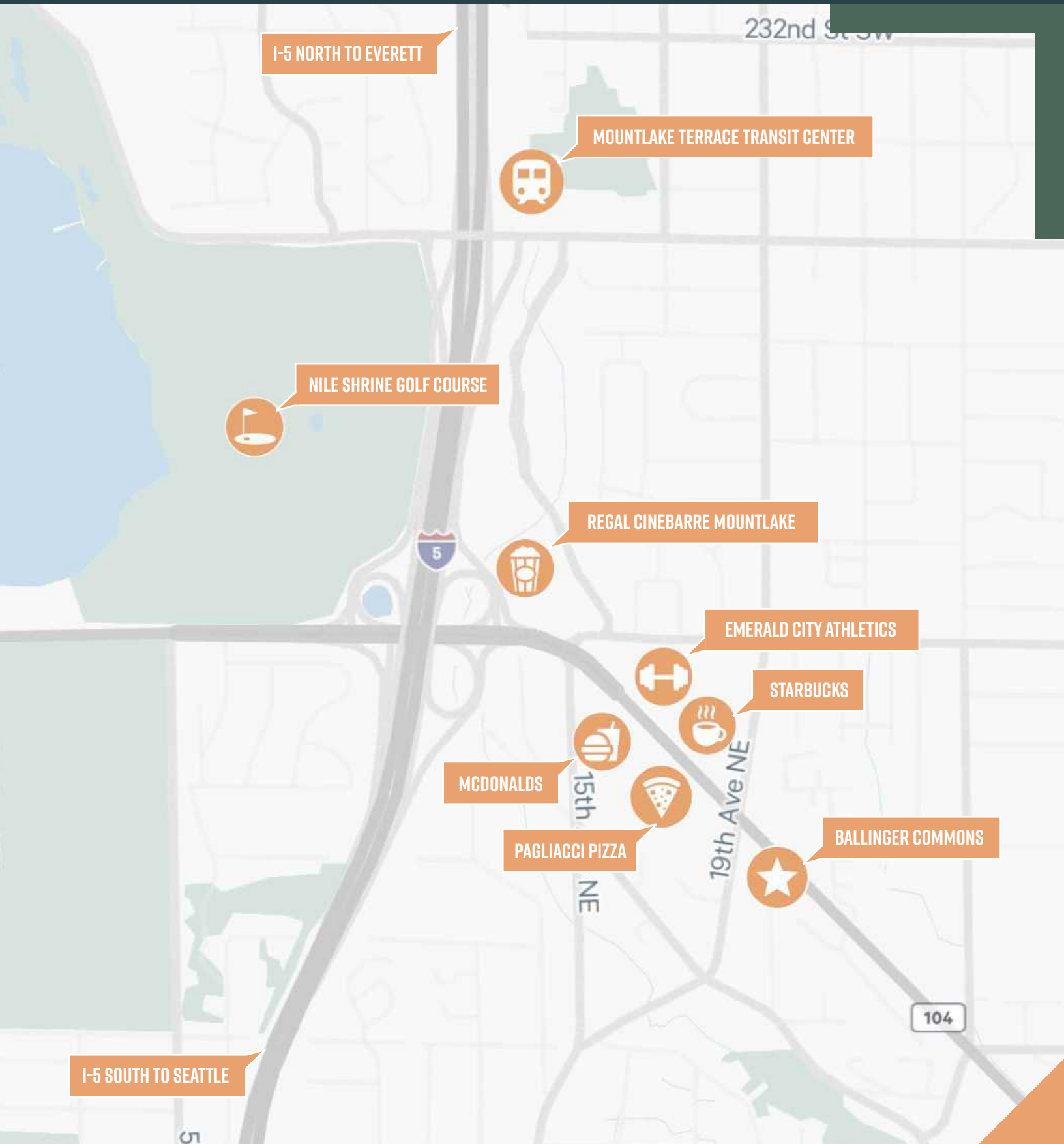


FLOORPLAN

SUITE 200



AMENITY MAP



AERIAL OF BALLINGER COMMONS



BALLINGER COMMONS

19929 BALLINGER WAY NE, SHORELINE WA



CONTACTS

Erik Larson
Senior Vice President
+1 425 462 6954
erik.larson@cbre.com

Ric Brandt
Senior Vice President
+1 425 462 6901
ric.brandt@cbre.com

John Bauer
Senior Vice President
+1 425 462 6906
john.bauer@cbre.com

CBRE

© 2024 CBRE, Inc. All rights reserved. This information has been obtained from sources believed reliable but has not been verified for accuracy or completeness. CBRE, Inc. makes no guarantee, representation or warranty and accepts no responsibility or liability as to the accuracy, completeness, or reliability of the information contained herein. You should conduct a careful, independent investigation of the property and verify all information. Any reliance on this information is solely at your own risk. CBRE and the CBRE logo are service marks of CBRE, Inc. All other marks displayed on this document are the property of their respective owners, and the use of such marks does not imply any affiliation with or endorsement of CBRE. Photos herein are the property of their respective owners. Use of these images without the express written consent of the owner is prohibited.