

FOR LEASE



2733 S Ash St

Tacoma, WA

PROPERTY HIGHLIGHTS

- + 9,659 SF (1,000 SF Office)
- + 2 - 10' x 12' Grade Level Doors; 1 Pony Dock
- + M-1; Light Industrial Zoning
- + Ideal for repair shop or storage
- + "Nalley Valley" location with great freeway access to Puget Sound region from SR-16 and I-5
- + 10' Clear Height
- + **\$8,600/month (\$0.89/SF Blended)**
- + Available Now



DAVE DOUGLAS, SIOR, CCIM

Partner
+1 253 203 1325
ddouglas@nai-psp.com

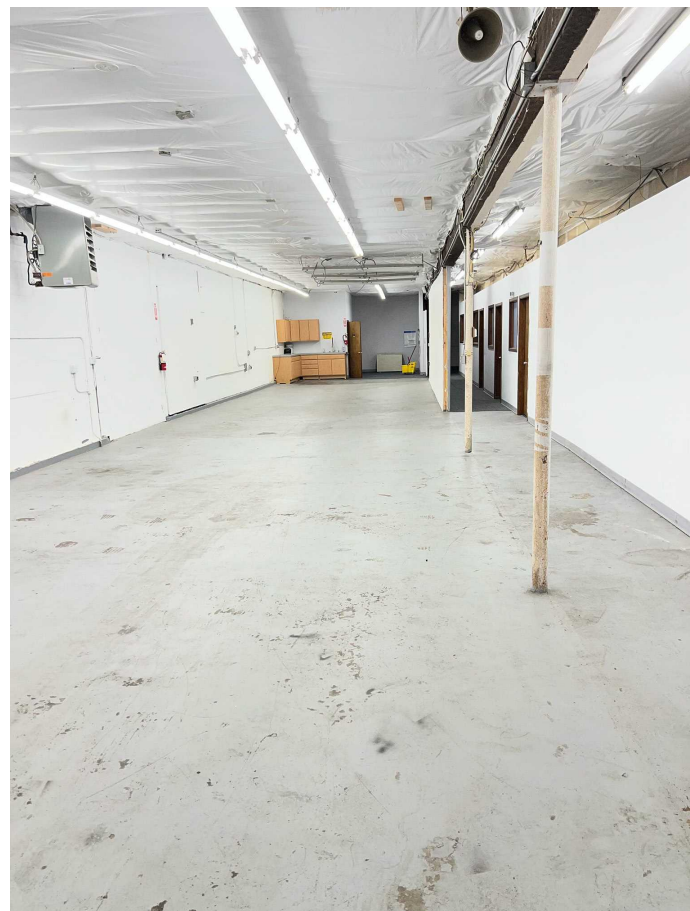
KYLE SCHIPPER, SIOR

Partner
+1 253 203 1320
kschipper@nai-psp.com



THE INFORMATION CONTAINED HEREIN HAS BEEN GIVEN TO US BY THE OWNER OF THE PROPERTY OR OTHER SOURCES WE DEEM RELIABLE, WE HAVE NO REASON TO DOUBT ITS ACCURACY, BUT WE DO NOT GUARANTEE IT. ALL INFORMATION SHOULD BE VERIFIED PRIOR TO PURCHASE OR LEASE.

nai-psp.com



DAVE DOUGLAS, SIOR, CCIM
Partner
+1 253 203 1325
ddouglas@nai-pp.com

KYLE SCHIPPER, SIOR
Partner
+1 253 203 1320
kschipper@nai-pp.com



Area Overview



DAVE DOUGLAS, SIOR, CCIM
Partner
+1 253 203 1325
ddouglas@nai-pp.com

KYLE SCHIPPER, SIOR
Partner
+1 253 203 1320
kschipper@nai-pp.com

