



TOX COMMERCIAL
REAL ESTATE

MILLWORX THE SILO BLOCK RETAIL | FOR LEASE

850 E. 4th Avenue | Post Falls | Idaho | 83854



M
**MILL
WORX**
=====
POST FALLS
ID



HIGHLIGHTS

- Premier building in the Millworx Project.
- Part of the 50-acre redevelopment of the Idaho Veneer Millsite.
- Considered the easternmost portion of Downtown Post Falls.
- Brand new community commercial spaces.
- Surrounded by 500+ existing residences.

DETAILS

- PROPERTY TYPE**
Mixed use with Retail/Office available
- BUILDING SIZE**
16 apartments+ 13,997 SF of commercial space
- DELIVERY**
Q2 2027

AVAILABILITY

SUITE	SIZE	RATE
SUITE B	1,400 SF	\$22.00/SF, NNN
SUITE C	2,030 SF	\$22.00/SF, NNN
SUITE D	2,390 SF	\$22.00/SF, NNN
SUITE E	1,935 SF	\$22.00/SF, NNN
SUITE F	2,600 SF	\$22.00/SF, NNN



DANNY DAVIS

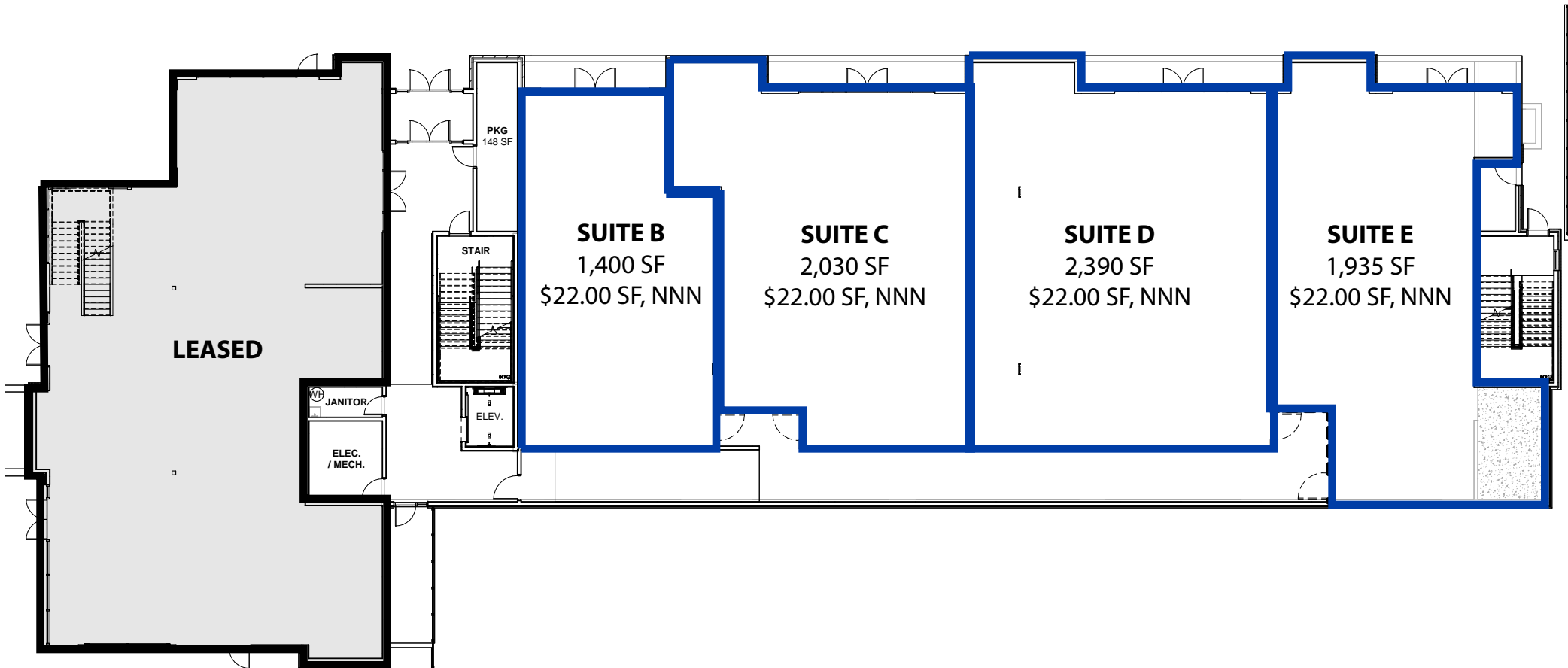
208.691.6003 / danny@tokcommercial.com





FLOOR PLAN

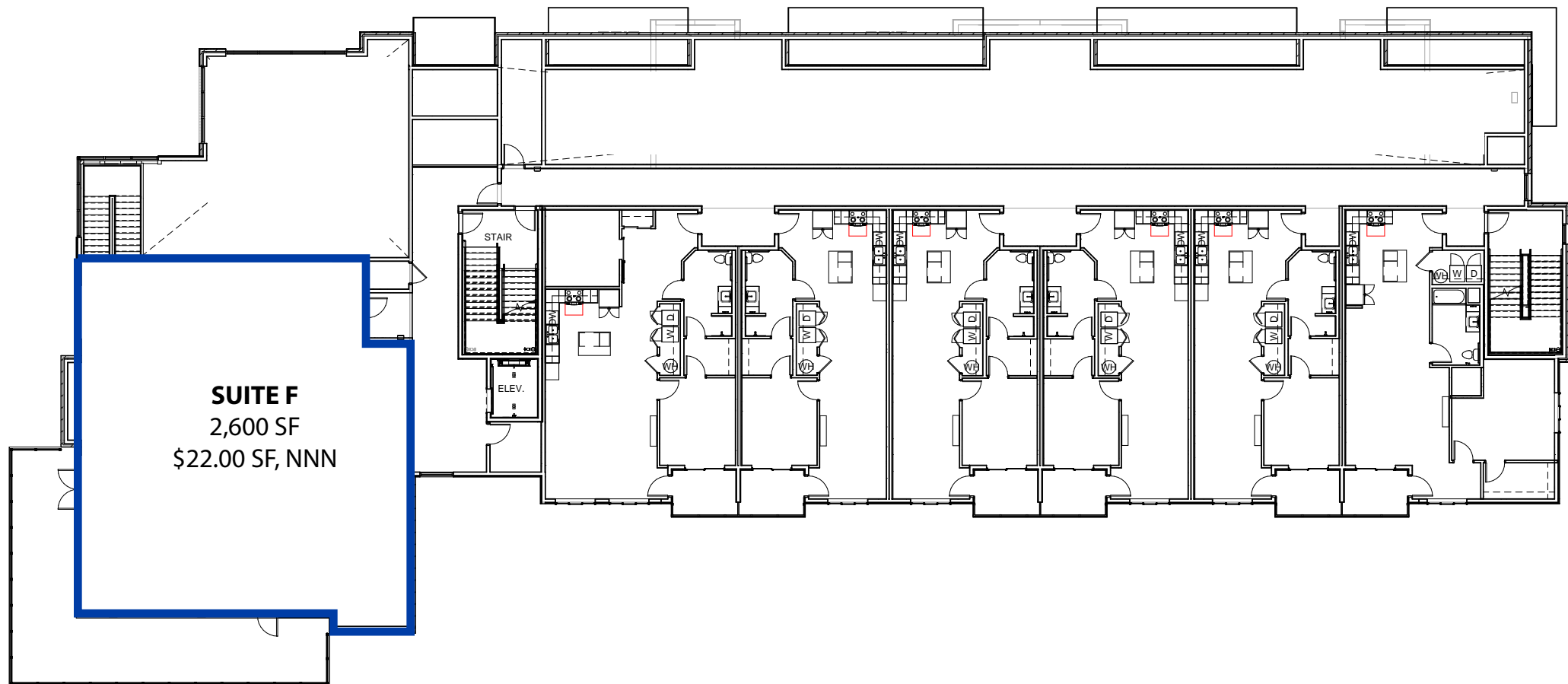
FLOOR 1





FLOOR PLAN

FLOOR 2





SITE PLAN



SYNERGY

WELL ESTABLISHED COMMUNITY INCLUDING HYATT HOTEL, KINDRED AND COMPANY, GLAMOUR COLLECTIVE, RANGE, AND PLANTINUM TRAINING.

13,997 SF

OF COMMERCIAL SPACE

16

Apartments





PROJECT RENDERINGS





SELTICE WAY

NORTH YARD

29,797 VPD



E 4TH AVE

KINDRED & CO

LOT 3
2 ACRES

HYATT

1,406 VPD

LOT 4
0.987 ACRES

LOT 2
0.987 ACRES

14,891 VPD

MILLSITE REDEVELOPMENT

piccolo
kitchen & bar

PT PLATINUM
TRAINING & FITNESS

TIMBERWORX
TOWNHOMES AT
MILLWORX

WOODLAND MEADOWS 330 UNITS