

FOR LEASE

4010 STONE WAY N, SEATTLE, WA



Rare opportunity to lease a 6,000 square foot biotech-ready laboratory in the heart of Wallingford, one of Seattle's most vibrant and convenient neighborhoods.

BUILDING FEATURES

Rare Stone Way Lab/Office

Approx. 6,000 SF

Available now

Entire 1st floor (full floor user)

Good Mix of private offices and lab space (see floor plan on reverse)

Priced at \$36.00 Full Service

7 on-site parking stalls (\$150 per stall per month)

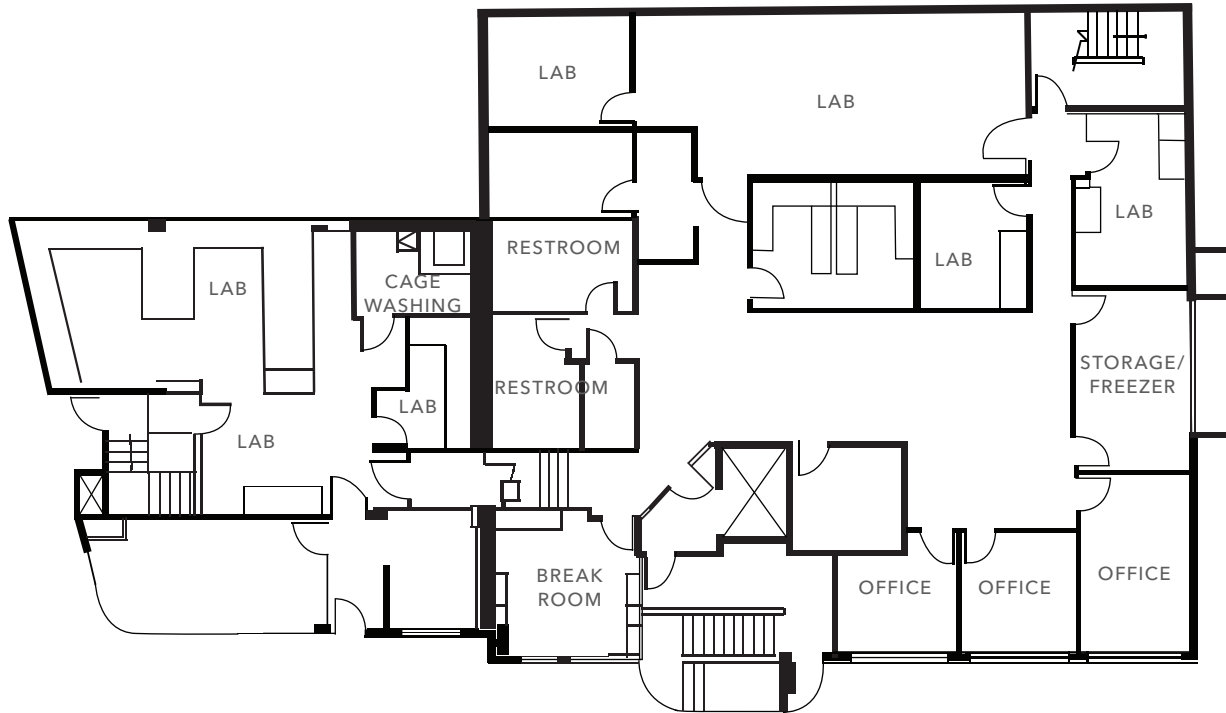
TIM FOSTER 206.296.9618 | tim.foster@kidder.com

KIDDER.COM

This information supplied herein is from sources we deem reliable. It is provided without any representation, warranty, or guarantee, expressed or implied as to its accuracy. Prospective Buyer or Tenant should conduct an independent investigation and verification of all matters deemed to be material, including, but not limited to, statements of income and expenses. Consult your attorney, accountant, or other professional advisor.



SUITE 100 FLOOR PLAN



KEY FEATURES INCLUDE:

This space is perfectly suited for preclinical research, biotech startups, academic spin-outs, or small-to-mid-size life sciences teams looking for in vivo capabilities without the hassle of building out your own facility.

Two dedicated vivarium rooms - ideal for small animal (rodent) housing. Spacious open lab area with flexible benching and utility infrastructure.

Convenient Wallingford location - easy access to UW, Fremont, South Lake Union, I-5. Lease Terms: Flexible (3-5 years). Full Service (Electricity, Water, Garbage).

TIM FOSTER 206.296.9618 | tim.foster@kidder.com

KIDDER.COM

This information supplied herein is from sources we deem reliable. It is provided without any representation, warranty, or guarantee, expressed or implied as to its accuracy. Prospective Buyer or Tenant should conduct an independent investigation and verification of all matters deemed to be material, including, but not limited to, statements of income and expenses. Consult your attorney, accountant, or other professional advisor.