



 **JLL** SEE A BRIGHTER WAY

For Lease

Andover East Business Center Building B

1087 Andover Park East, Tukwila, WA 98188

**Total of 8,140 SF
Available 6/1/2026**

Location

- Strategic distribution location
- Located on major North/South arterial, connecting to I-405 and immediate access to I-5
- Minutes from SeaTac International Airport
- Professionally maintained landscaping

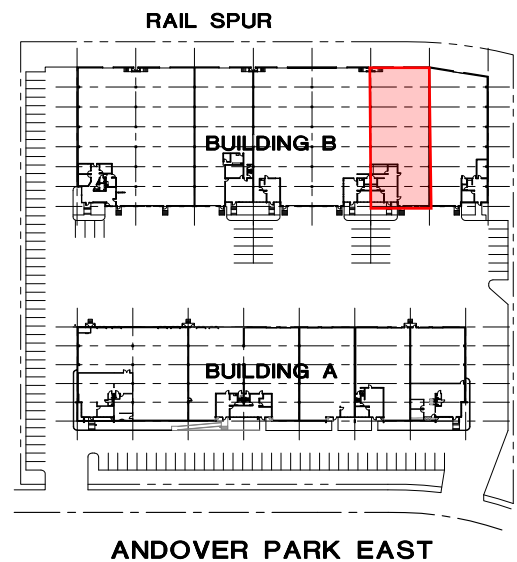
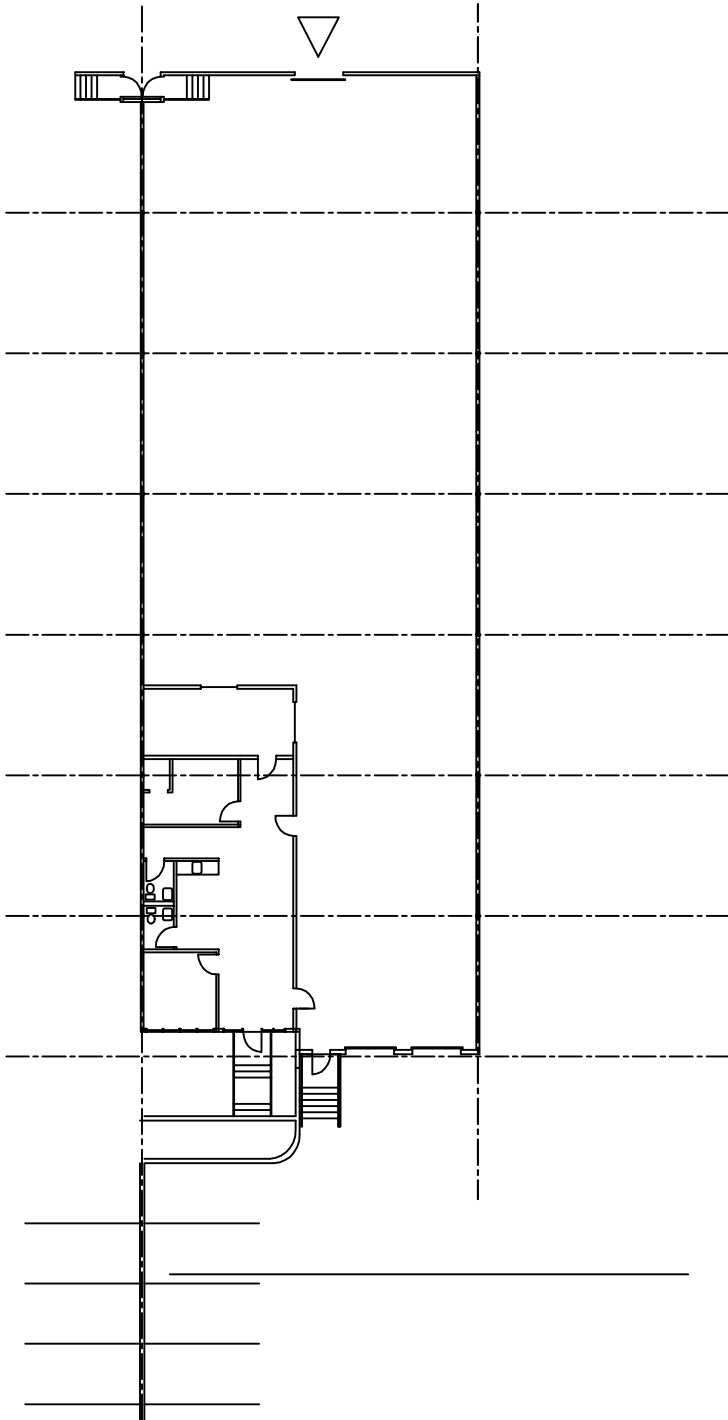
General Features

- Total of 8,140 SF
- 1,293 SF office
- 22' clear height
- 21'x 55' column spacing
- 2 dock high doors
- 39/5600 wet sprinkler system
- 128' truck court
- 148' minimum bay depth
- Contact brokers for rates
- Available June 1, 2026

Scott Carter
Managing Director
scott.carter@jll.com
+1 425 761 5880

Les Boudwin, SIOR
Managing Director
les.boudwin@jll.com
+1 206 679 6393





Scott Carter
 Managing Director
 scott.carter@jll.com
 +1 425 761 5880

Les Boudwin, SIOR
 Managing Director
 les.boudwin@jll.com
 +1 206 679 6393

