

// PROPERTY SUMMARY

2 Months Free Rent

with qualifying lease



PROPERTY DESCRIPTION

Fantastic and affordable office space for lease in 4-plex on Spokane's North Bank. Just blocks from the new ONE Spokane Sports Stadium and Downtown.

PROPERTY HIGHLIGHTS

- Modified Gross: Tenant pays pro rata share of water, sewer, garbage & electricity (Ste 1 = \$193/mo)
- Suites feature large, open configurations, kitchen spaces, and private bathrooms
- Free On-site Parking
- Secure Building with 24/7 Security Camera Monitoring
- Close to Riverfront Park, Kendall Yards, Spokane Arena, The Podium and Spokane County Campus

SPACES	LEASE RATE	SPACE SIZE
Suite 1	\$900 per month	984 SF

DEMOGRAPHICS	1 MILE	3 MILES	5 MILES
Total Households	5,777	55,013	111,594
Total Population	13,737	125,763	260,663
Average HH Income	\$37,862	\$46,285	\$50,573



// PRESENTED BY:

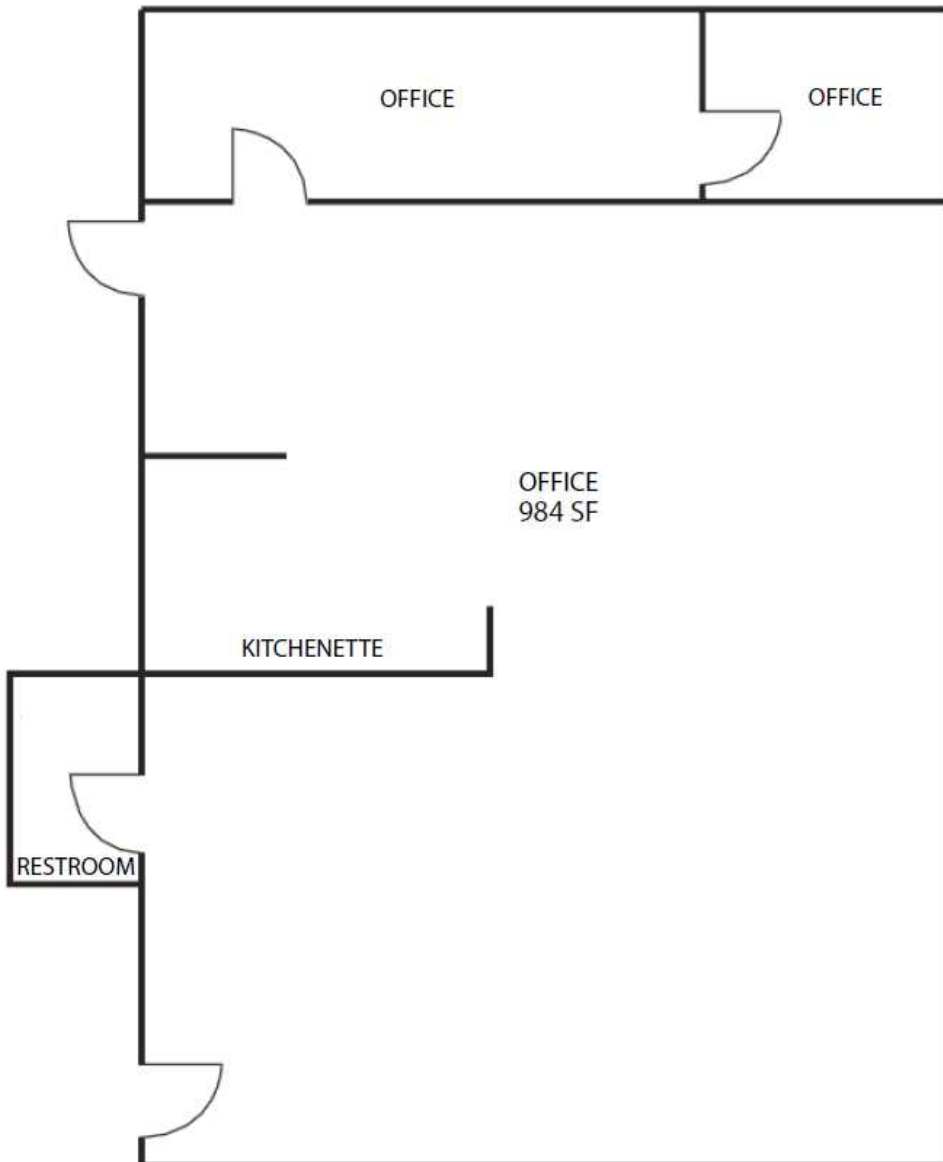
STEPHEN BARBIERI
 COMMERCIAL LEASING & SALES MANAGER
 509.344.4919
 SBARBIERI@G-B.COM

KATIE BOHR
 COMMERCIAL BROKER & LEASING MANAGER
 509.344.4906
 KATIE.BOHR@G-B.COM



// FLOOR PLAN

601 West Maxwell Ave Lower Level Suite 1 Floor Plan 984 SF



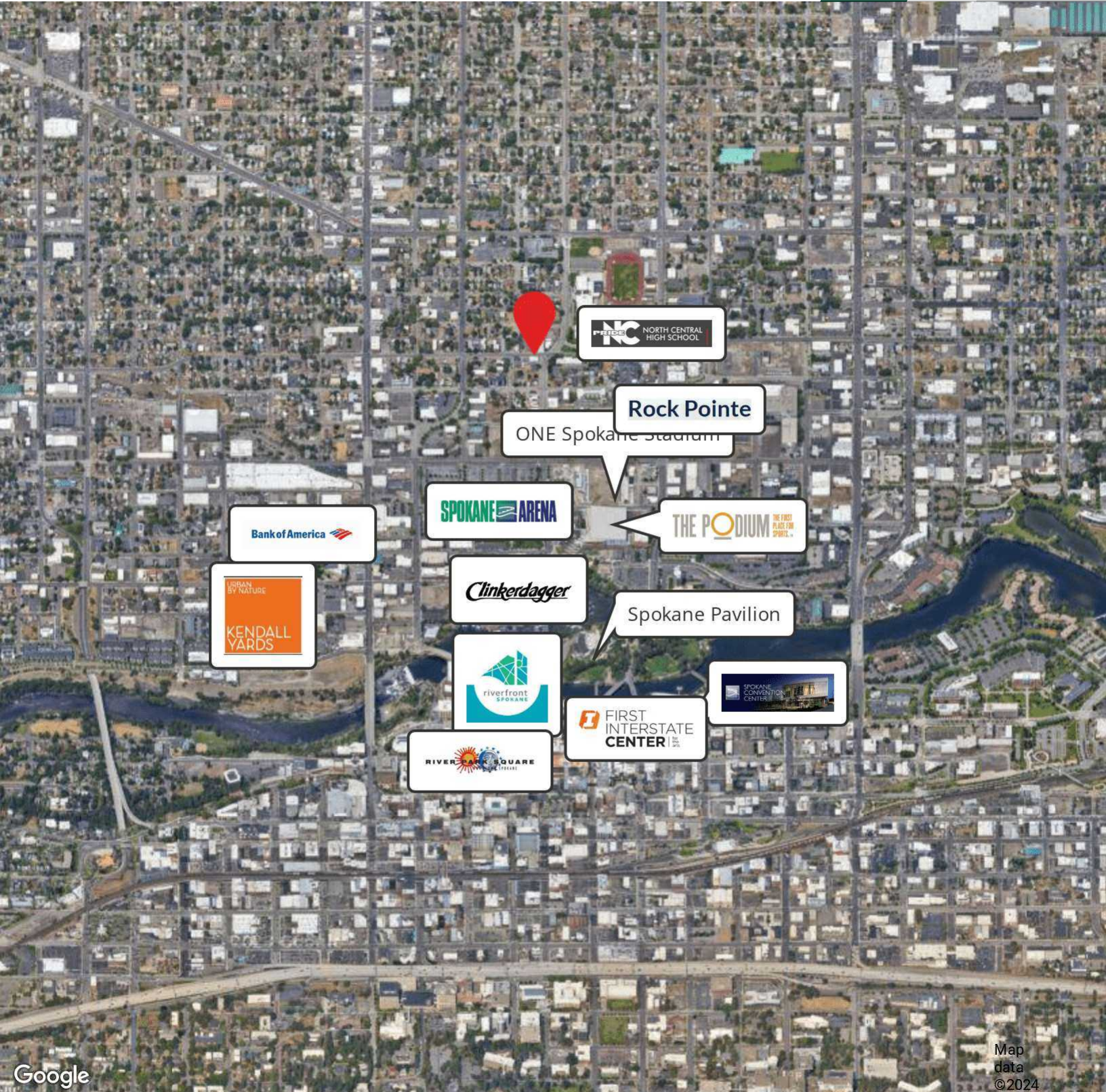
// PRESENTED BY:

STEPHEN BARBIERI
COMMERCIAL LEASING & SALES MANAGER
509.344.4919
SBARBIERI@G-B.COM

KATIE BOHR
COMMERCIAL BROKER & LEASING MANAGER
509.344.4906
KATIE.BOHR@G-B.COM



// RETAILER MAP



Google

Map data ©2024

// PRESENTED BY:

STEPHEN BARBIERI
COMMERCIAL LEASING & SALES MANAGER
509.344.4919
SBARBIERI@G-B.COM

KATIE BOHR
COMMERCIAL BROKER & LEASING MANAGER
509.344.4906
KATIE.BOHR@G-B.COM

