



 **JLL** SEE A BRIGHTER WAY

# For Lease

## Andover East Business Center Building A

1071 Andover Park East, Tukwila, WA 98188

**Total of 5,200 SF  
Available 9/1/2026**

### Location

- Located on major North/South arterial, connecting to I-405 and immediate access to I-5
- Minutes from SeaTac International Airport
- Close to Southcenter mall and abundant amenities

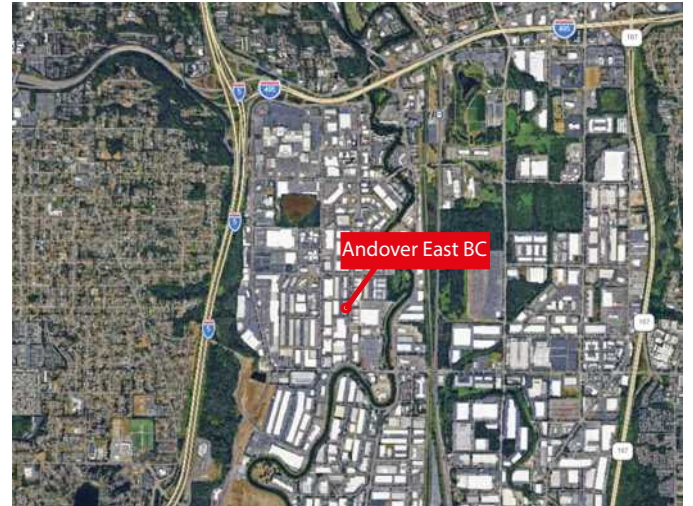
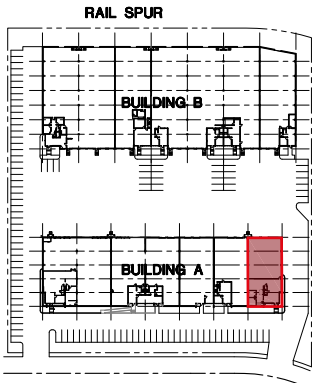
### General Features

- Total of 5,200 SF
- 1,909 SF office
- 100' bay depth
- 16' clear height
- 20'x52' column spacing
- 2 dock high overhead doors
- 39/5600 wet sprinkler system
- 128' truck court
- Contact brokers for rates
- Available September 1, 2026

**Scott Carter**  
Managing Director  
scott.carter@jll.com  
+1 425 761 5880

**Les Boudwin, SIOR**  
Managing Director  
les.boudwin@jll.com  
+1 206 679 6393

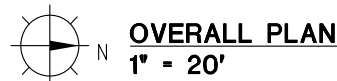
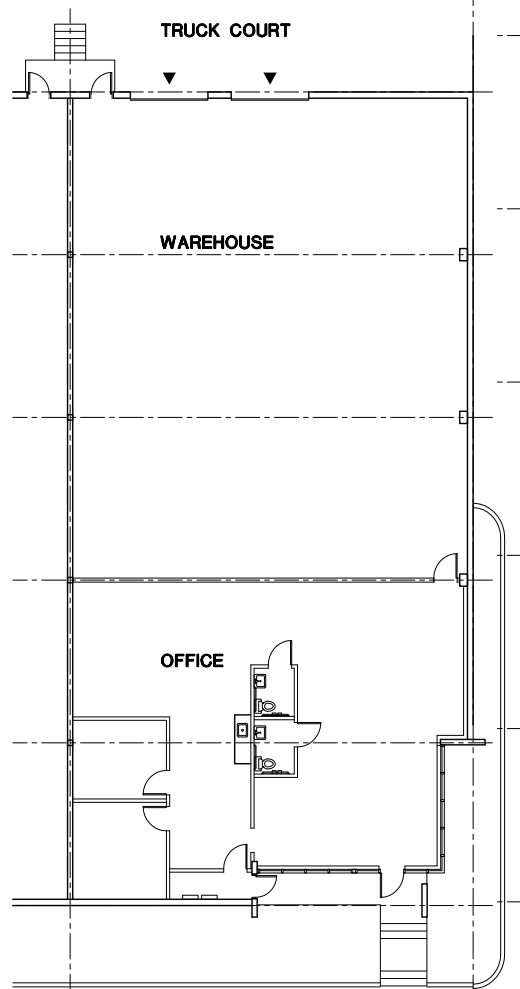
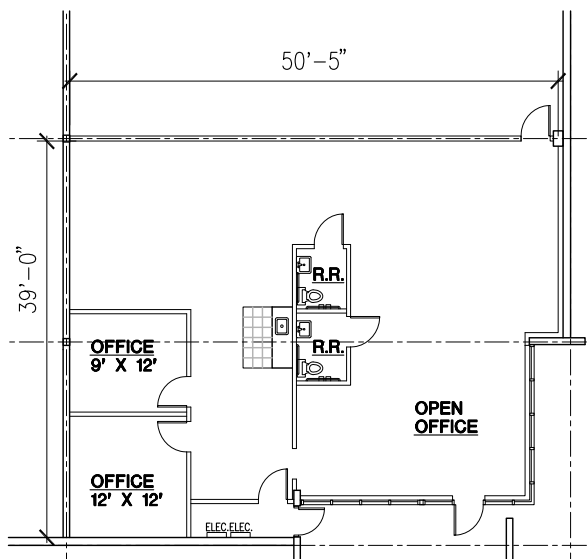




**BUILDING AREA**  
1,909 SQ.FT. OFFICE  
3,291 SQ.FT. WAREHOUSE  
5,200 SQ.FT. TOTAL

**LEGEND**

- ▼ DOCK-HIGH OVERHEAD DOOR
- RAIL DOORS



**Scott Carter**  
Managing Director  
scott.carter@jll.com  
+1 425 761 5880

**Les Boudwin, SIOR**  
Managing Director  
les.boudwin@jll.com  
+1 206 679 6393

