

# 7SEAS TACOMA

2101 Jefferson Ave, Tacoma, WA 98402

**LEE & ASSOCIATES**  
COMMERCIAL REAL ESTATE SERVICES



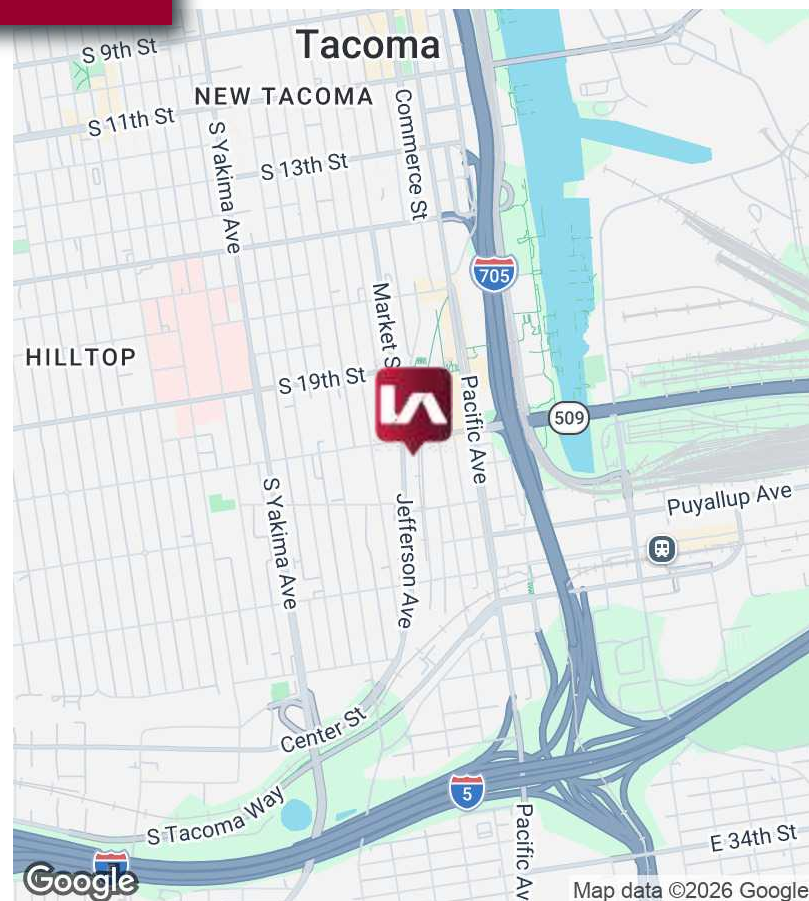
**INDUSTRIAL SPACE FOR LEASE | 8,358 SF**

## LISTING INFORMATION

|          |  |
|----------|--|
| ADDRESS: | 2101 Jefferson Ave, Tacoma WA                              |
| SUITE A: | 8,358 SF, 1 restroom, build-to-suit office (Available Now) |
| RATE:    | \$0.65 PSF + NNN's   |
| LOADING: | Shared dock access available                               |

## COMMENTS

Located in Downtown Tacoma, adjacent to University of Washington Tacoma Campus. Well located with great visibility and easy freeway access.



# 7SEAS TACOMA

2101 Jefferson Ave, Tacoma, WA 98402



COMMERCIAL REAL ESTATE SERVICES

## AREA AMENITIES



## CONTACT

**Justin Froelich**

253.238.0047

[jfroelich@lee-associates.com](mailto:jfroelich@lee-associates.com)

**Vanessa Herzog, SIOR, CCIM**

253.444.3020

[vherzog@lee-associates.com](mailto:vherzog@lee-associates.com)

**Harrison Laird**

253.238.0044

[hlaird@lee-associates.com](mailto:hlaird@lee-associates.com)

**John Bauder, CCIM**

253.238.0043

[jbauder@lee-associates.com](mailto:jbauder@lee-associates.com)

We obtained the information above from sources we believe to be reliable. However, we have not verified its accuracy and make no guarantee, warranty or representation about it. It is submitted subject to the possibility of errors, omissions, change of price, rental or other conditions, prior sale, lease or financing, or withdrawal without notice. We include projections, opinions, assumptions or estimates for example only, and they may not represent current or future performance of the property. You and your tax and legal advisors should conduct your own investigation of the property and transaction.

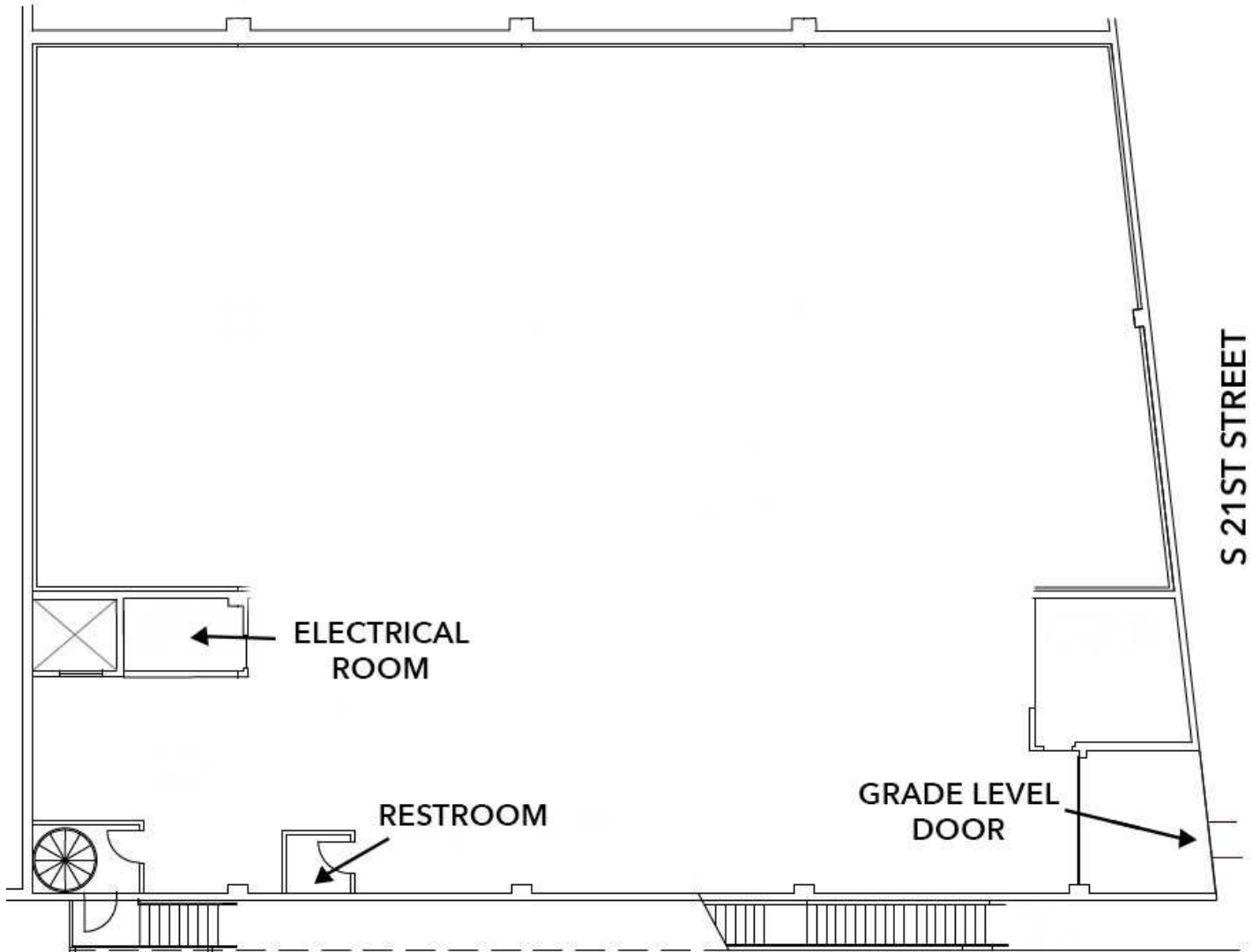
# 7SEAS TACOMA

2101 Jefferson Ave, Tacoma, WA 98402



COMMERCIAL REAL ESTATE SERVICES

**SUITE A - 8,358 SF**



## PRAIRIE LINE TRAIL

### CONTACT

**Justin Froelich**

253.238.0047

[jfroelich@lee-associates.com](mailto:jfroelich@lee-associates.com)

**Vanessa Herzog, SIOR, CCIM**

253.444.3020

[vherzog@lee-associates.com](mailto:vherzog@lee-associates.com)

**Harrison Laird**

253.238.0044

[hlaird@lee-associates.com](mailto:hlaird@lee-associates.com)

**John Bauder, CCIM**

253.238.0043

[jbauder@lee-associates.com](mailto:jbauder@lee-associates.com)

We obtained the information above from sources we believe to be reliable. However, we have not verified its accuracy and make no guarantee, warranty or representation about it. It is submitted subject to the possibility of errors, omissions, change of price, rental or other conditions, prior sale, lease or financing, or withdrawal without notice. We include projections, opinions, assumptions or estimates for example only, and they may not represent current or future performance of the property. You and your tax and legal advisors should conduct your own investigation of the property and transaction.