

For Lease

# MAPLEWOOD MEDICAL CENTER

33915 1ST WAY S, FEDERAL WAY, WA

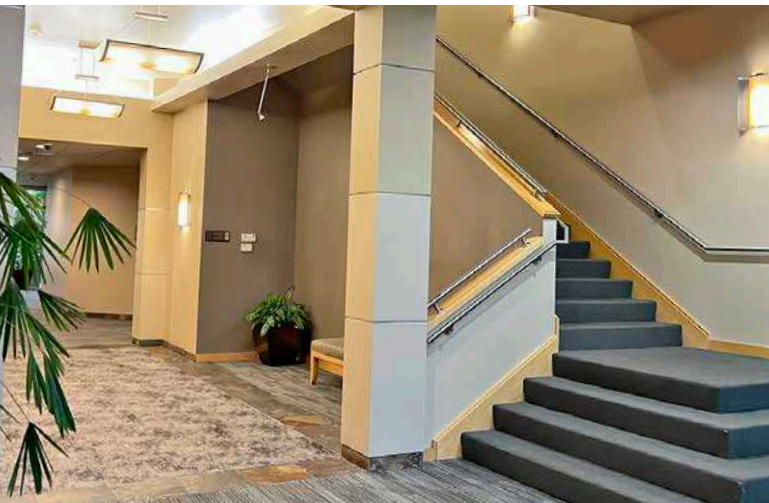
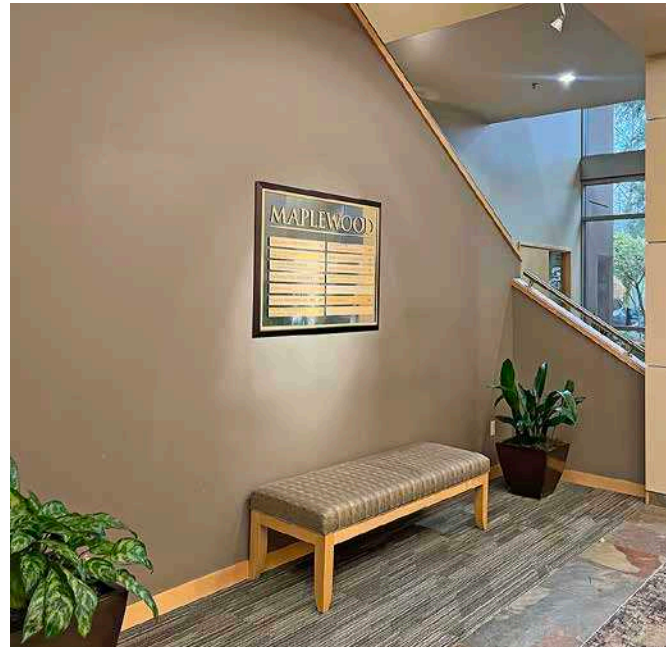
*Exclusively leased by*

DREW FRAME, SIOR  
253.948.7032  
drew.frame@kidder.com

RYAN KERSHAW  
206.949.1334  
ryan.kershaw@kidder.com

KIDDER.COM

 Kidder  
Mathews



## Class "A" Medical Office

SUITE 106	1,726 SF
SUITE 108	1,555 SF
SUITE 114	2,290 SF
SUITE 126	1,011 SF
SUITE 204	1,570 SF
RATE	\$17.00 PSF, NNN
HOSPITAL SYNERGY	Located a block from Virginia Mason and less than a mile from the St Francis Hospital Campus
LOCATION	Central location with easy access to I-5
TENANTS	Join tenants Patricia Kho DDS, GI Alliance, Kids on 1st Dentistry, and Silver Falls Dermatology
SECOND GEN	Multiple suites with existing medical buildouts that are ready for occupancy

KIDDER.COM

This information supplied herein is from sources we deem reliable. It is provided without any representation, warranty, or guarantee, expressed or implied as to its accuracy. Prospective Buyer or Tenant should conduct an independent investigation and verification of all matters deemed to be material, including, but not limited to, statements of income and expenses. Consult your attorney, accountant, or other professional advisor.



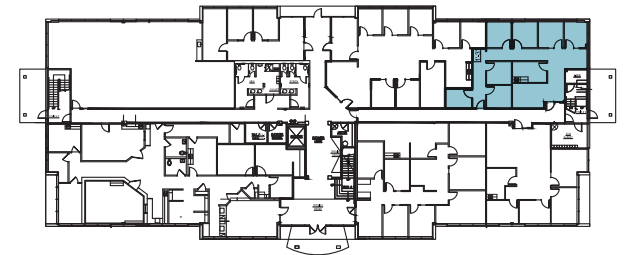
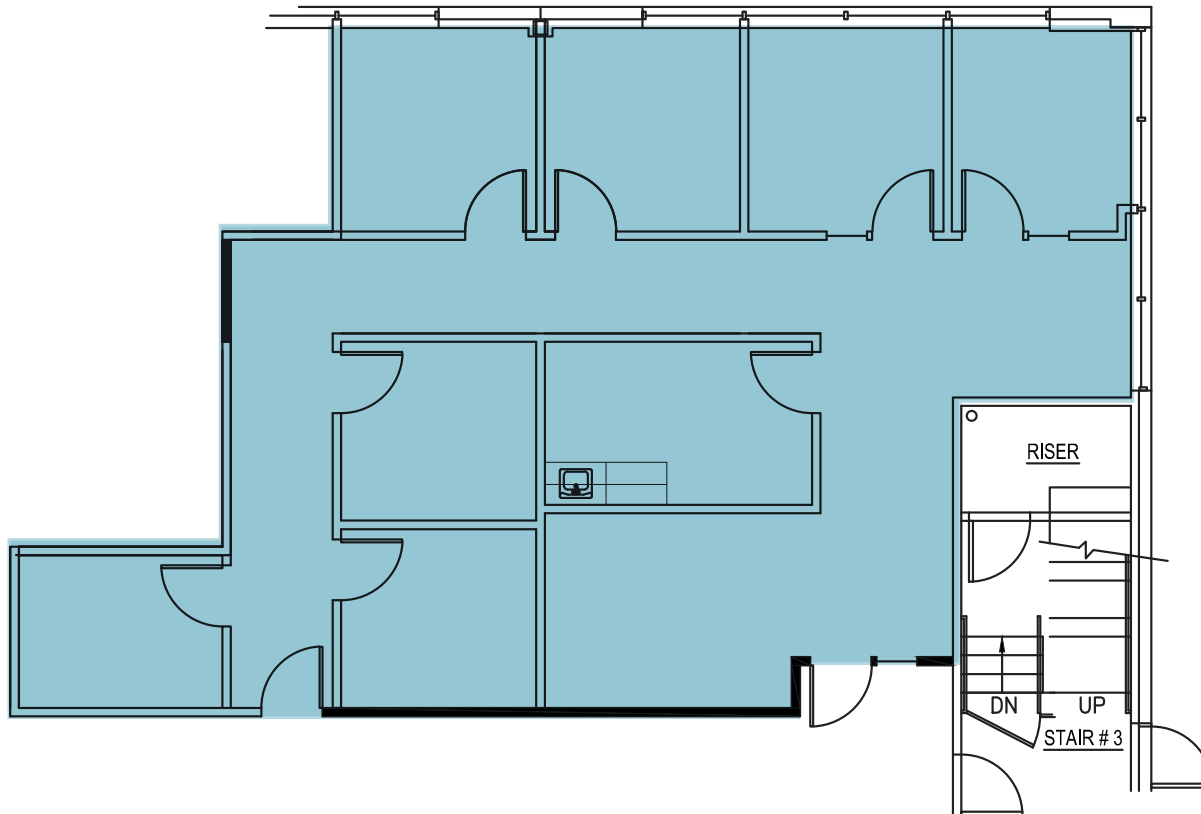
# SUITE 106

1,726 SF

AVAILABLE

\$17.00

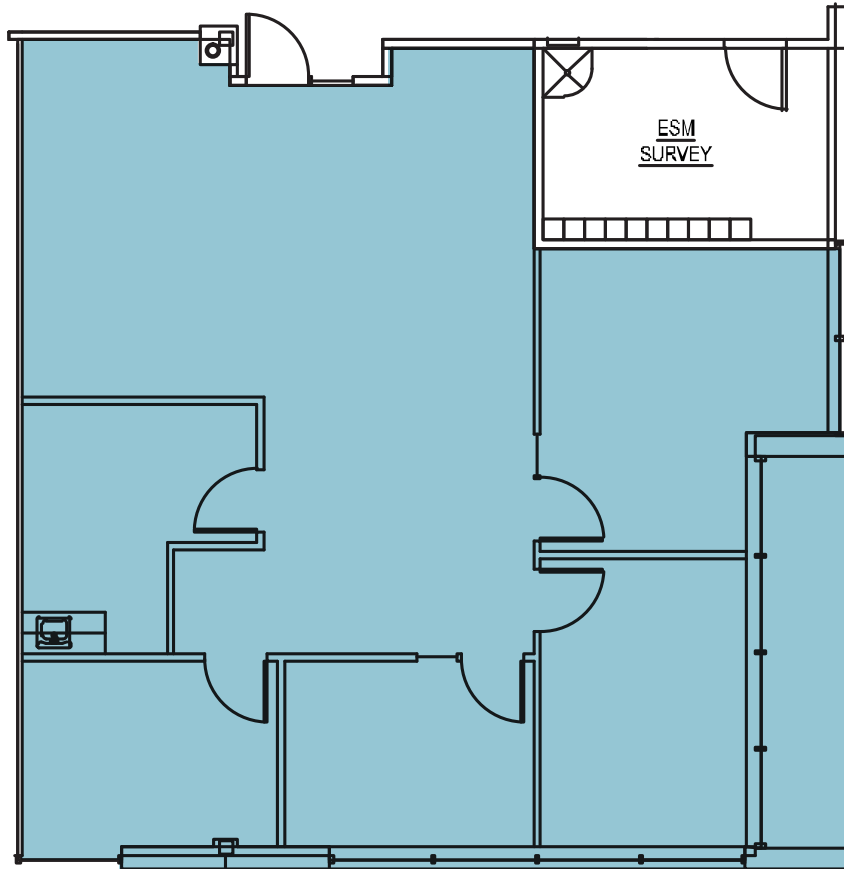
LEASE RATE (SF/YR)



KIDDER.COM

This information supplied herein is from sources we deem reliable. It is provided without any representation, warranty, or guarantee, expressed or implied as to its accuracy. Prospective Buyer or Tenant should conduct an independent investigation and verification of all matters deemed to be material, including, but not limited to, statements of income and expenses. Consult your attorney, accountant, or other professional advisor.

# SUITE 108

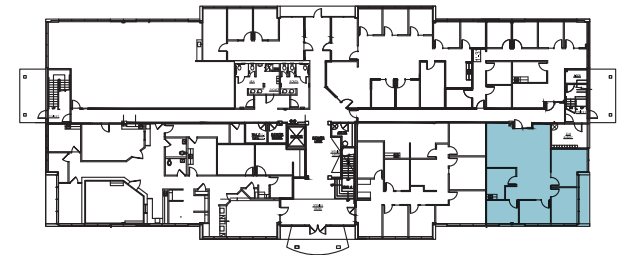


1,555 SF

AVAILABLE

\$17.00

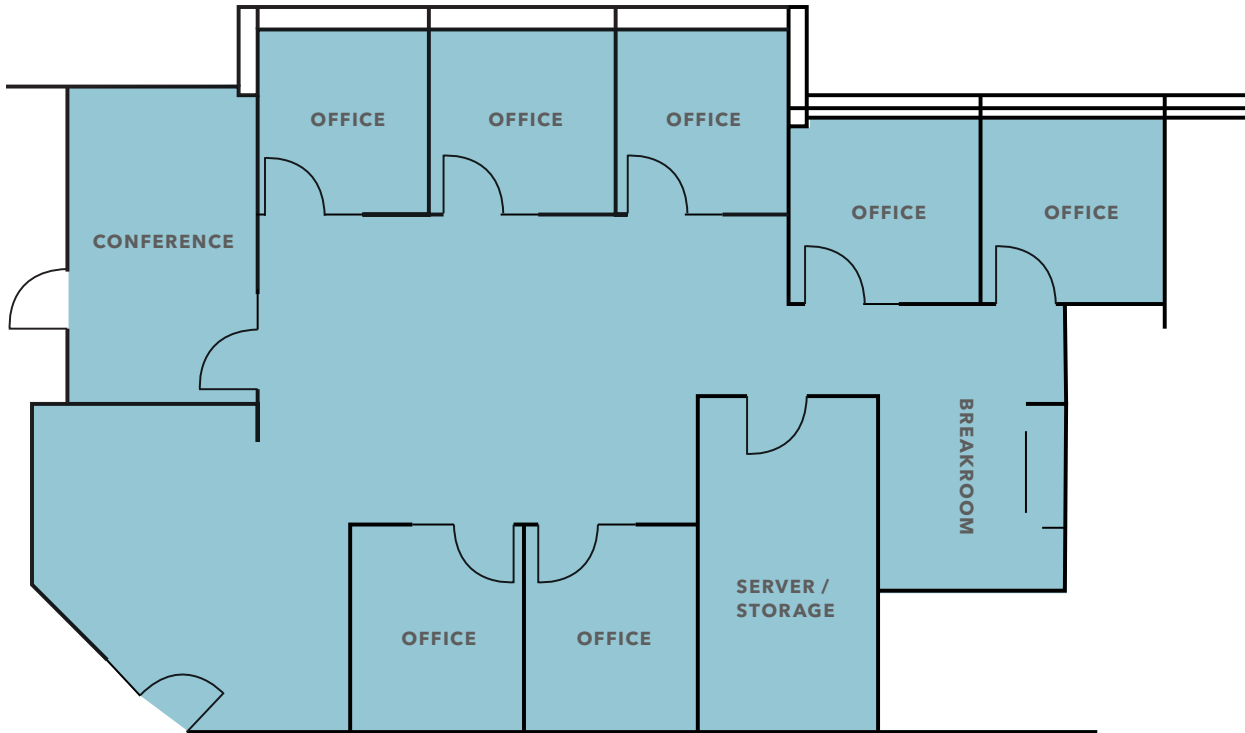
LEASE RATE (SF/YR)



[KIDDER.COM](http://KIDDER.COM)

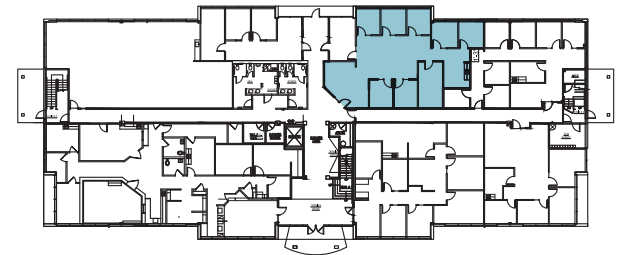
This information supplied herein is from sources we deem reliable. It is provided without any representation, warranty, or guarantee, expressed or implied as to its accuracy. Prospective Buyer or Tenant should conduct an independent investigation and verification of all matters deemed to be material, including, but not limited to, statements of income and expenses. Consult your attorney, accountant, or other professional advisor.

# SUITE 114



**SPACE PROGRAM**

- Spacious Reception
- 7 Private Offices
- 1 Conference Room
- Staff Breakroom
- Server/Storage Room

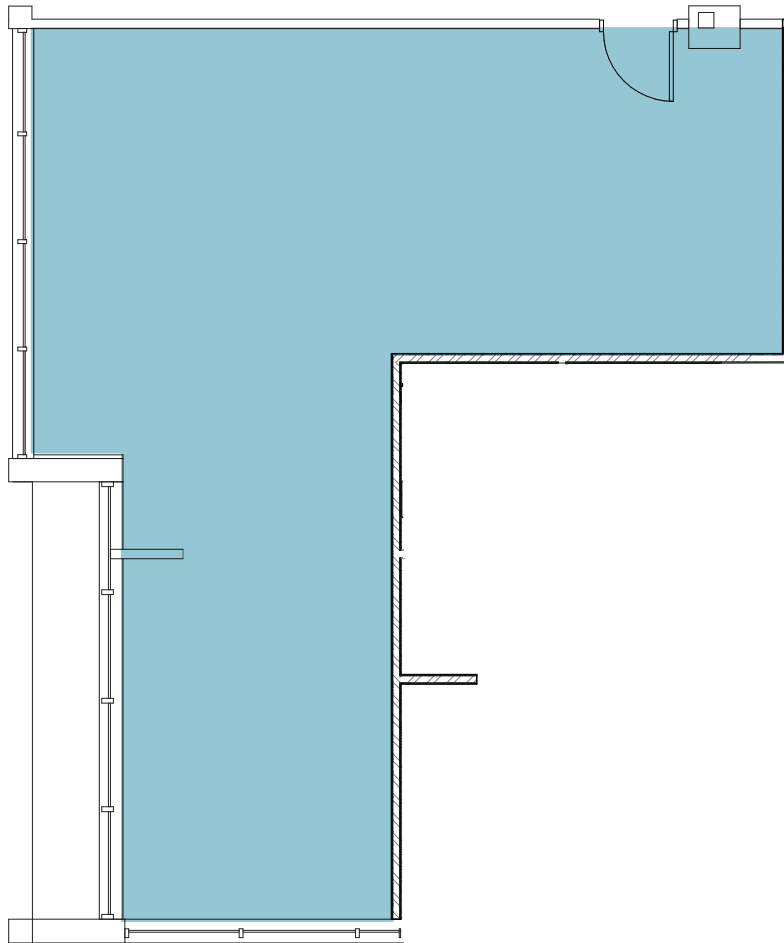


**2,290 SF** | **\$17.00**  
AVAILABLE | LEASE RATE (SF/YR)

[KIDDER.COM](http://KIDDER.COM)

This information supplied herein is from sources we deem reliable. It is provided without any representation, warranty, or guarantee, expressed or implied as to its accuracy. Prospective Buyer or Tenant should conduct an independent investigation and verification of all matters deemed to be material, including, but not limited to, statements of income and expenses. Consult your attorney, accountant, or other professional advisor.

# SUITE 126

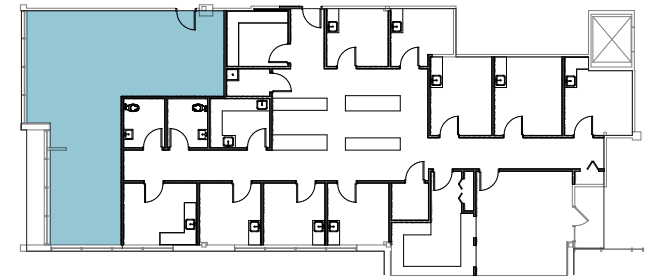


1,011 SF

AVAILABLE

\$17.00

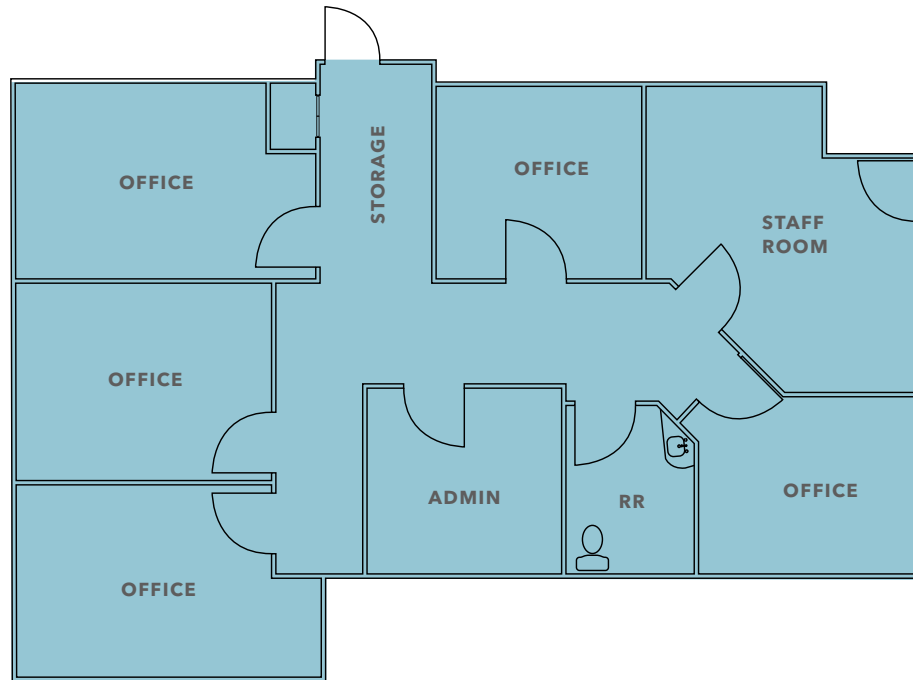
LEASE RATE (SF/YR)



[KIDDER.COM](http://KIDDER.COM)

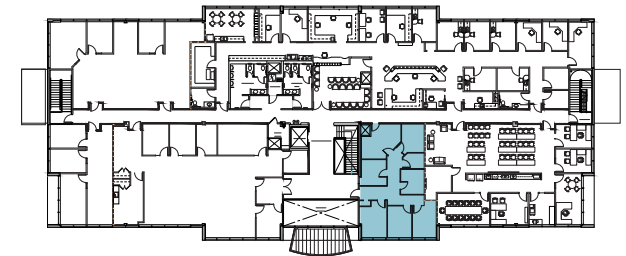
This information supplied herein is from sources we deem reliable. It is provided without any representation, warranty, or guarantee, expressed or implied as to its accuracy. Prospective Buyer or Tenant should conduct an independent investigation and verification of all matters deemed to be material, including, but not limited to, statements of income and expenses. Consult your attorney, accountant, or other professional advisor.

# SUITE 204



**SPACE PROGRAM**

- 1 In-Suite Restroom
- 5 Private Offices
- Admin Room
- Staff Breakroom
- Storage Closet



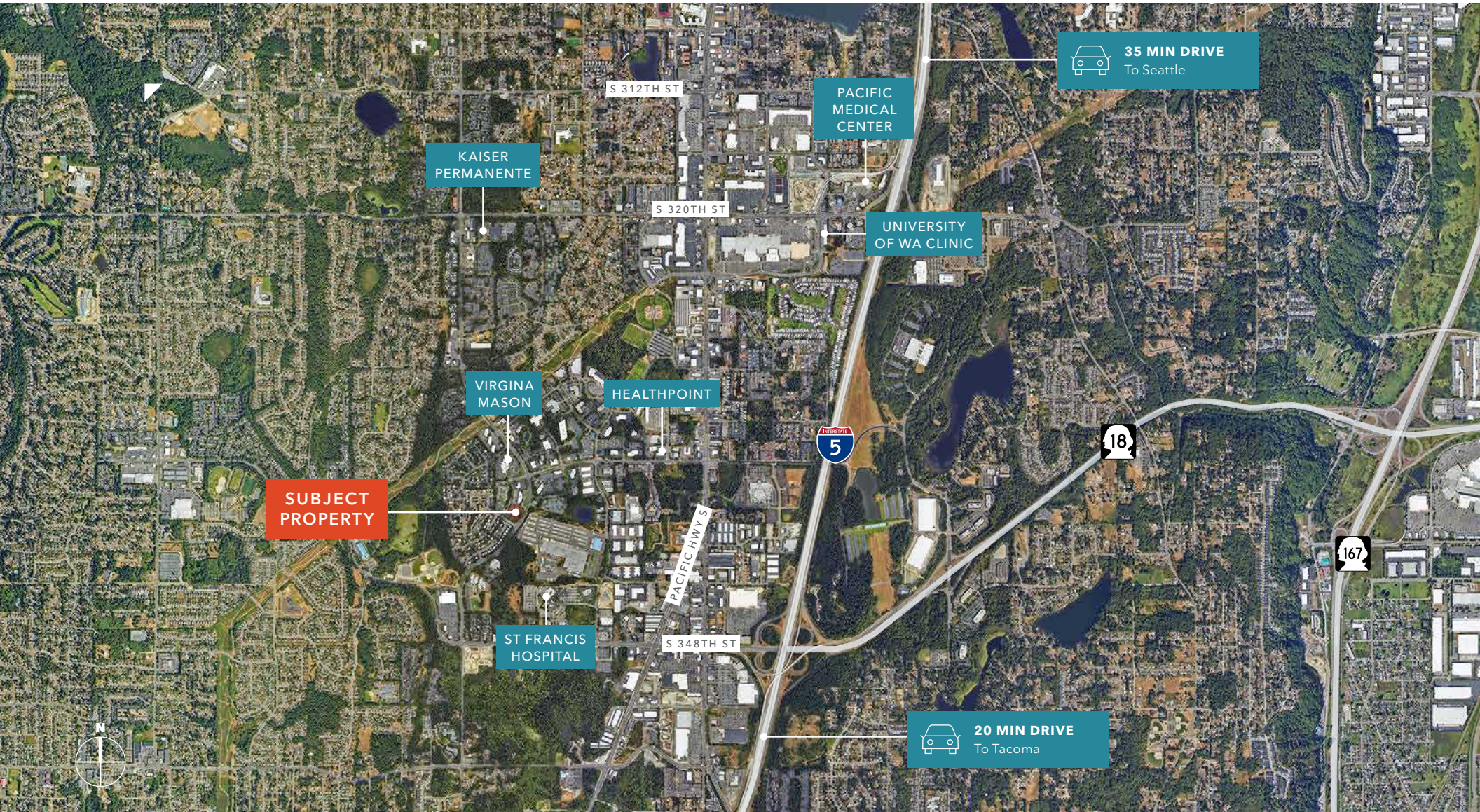
**1,570 SF**  
AVAILABLE

**\$17.00**  
LEASE RATE (SF/YR)

[KIDDER.COM](http://KIDDER.COM)

This information supplied herein is from sources we deem reliable. It is provided without any representation, warranty, or guarantee, expressed or implied as to its accuracy. Prospective Buyer or Tenant should conduct an independent investigation and verification of all matters deemed to be material, including, but not limited to, statements of income and expenses. Consult your attorney, accountant, or other professional advisor.

# MAPLEWOOD MEDICAL CENTER



KIDDER.COM

This information supplied herein is from sources we deem reliable. It is provided without any representation, warranty, or guarantee, expressed or implied as to its accuracy. Prospective Buyer or Tenant should conduct an independent investigation and verification of all matters deemed to be material, including, but not limited to, statements of income and expenses. Consult your attorney, accountant, or other professional advisor.



# MAPLEWOOD MEDICAL ENTER

S 348TH ST

1ST WAY S

*Exclusively leased by*

DREW FRAME, SIOR  
253.948.7032  
drew.frame@kidder.com

RYAN KERSHAW  
206.949.1334  
ryan.kershaw@kidder.com

[KIDDER.COM](http://KIDDER.COM)

This information supplied herein is from sources we deem reliable. It is provided without any representation, warranty, or guarantee, expressed or implied as to its accuracy. Prospective Buyer or Tenant should conduct an independent investigation and verification of all matters deemed to be material, including, but not limited to, statements of income and expenses. Consult your attorney, accountant, or other professional advisor.

 **Kidder  
Mathews**