

PACIFIC BUSINESS PARK BUILDING 9



*Industrial Space
For Lease*

4,700
SF TOTAL

3,222
SF OFFICE

9/1/26
AVAILABLE

4,700 SF available, 3,222 SF office, may demo some office to suit

\$1.10/SF shell, \$1.35/SF office add-on + NNN

One dock-high door, one grade-level door

Great parking

20' clear height

Tremendous access to I-5 & SR-167 via S 212th St

Comcast cable available

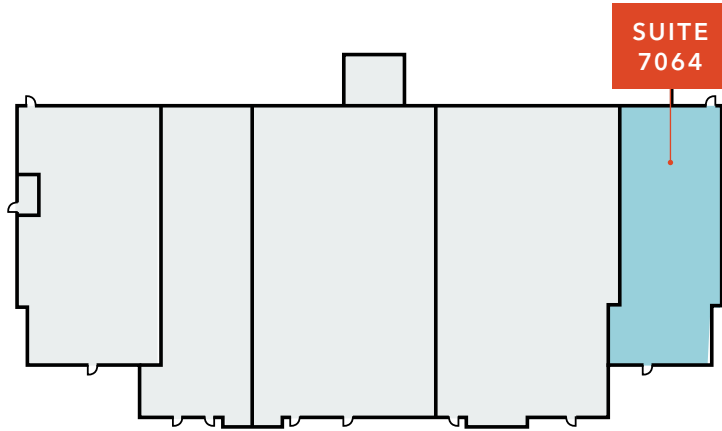
Onsite roaming security guard with patrol car, from 9 PM-5 AM seven days a week

DOUG KLEIN, SIOR
206.248.7348
doug.klein@kidder.com

KRAIG HEETER, SIOR
206.248.7313
kraig.heeter@kidder.com

KIDDER.COM

This information supplied herein is from sources we deem reliable. It is provided without any representation, warranty, or guarantee, expressed or implied as to its accuracy. Prospective Buyer or Tenant should conduct an independent investigation and verification of all matters deemed to be material, including, but not limited to, statements of income and expenses. Consult your attorney, accountant, or other professional advisor.



BUILDING 9

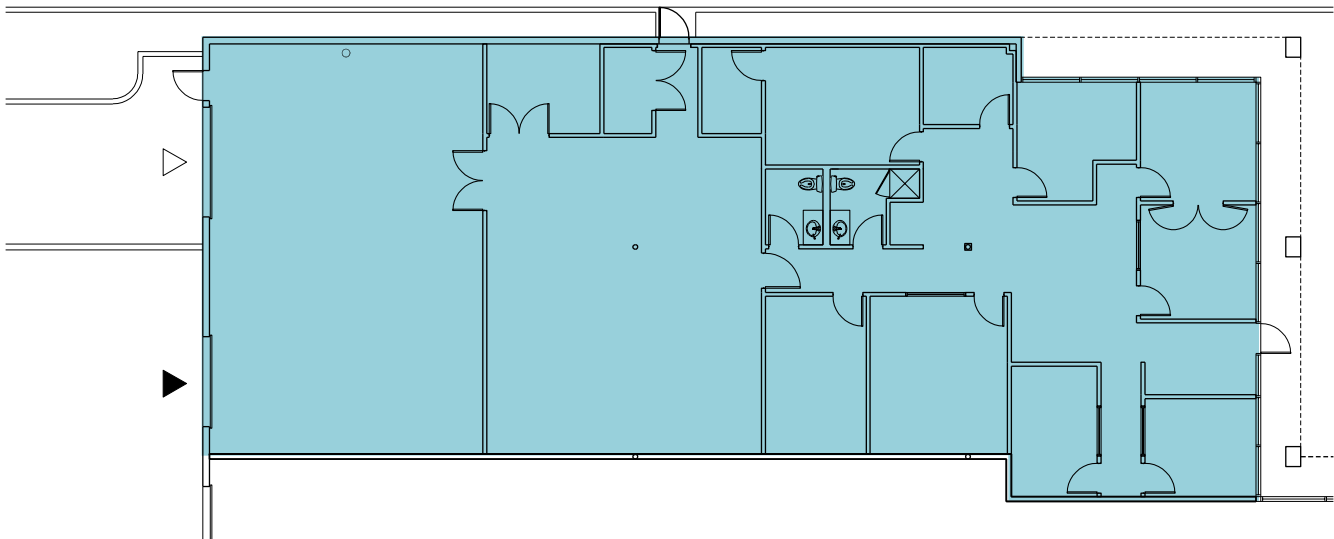


\$1.10

PSF SHELL, NNN

\$1.35

PSF OFFICE ADD-ON



SUITE 7064 FLOORPLAN



KIDDER.COM

This information supplied herein is from sources we deem reliable. It is provided without any representation, warranty, or guarantee, expressed or implied as to its accuracy. Prospective Buyer or Tenant should conduct an independent investigation and verification of all matters deemed to be material, including, but not limited to, statements of income and expenses. Consult your attorney, accountant, or other professional advisor.

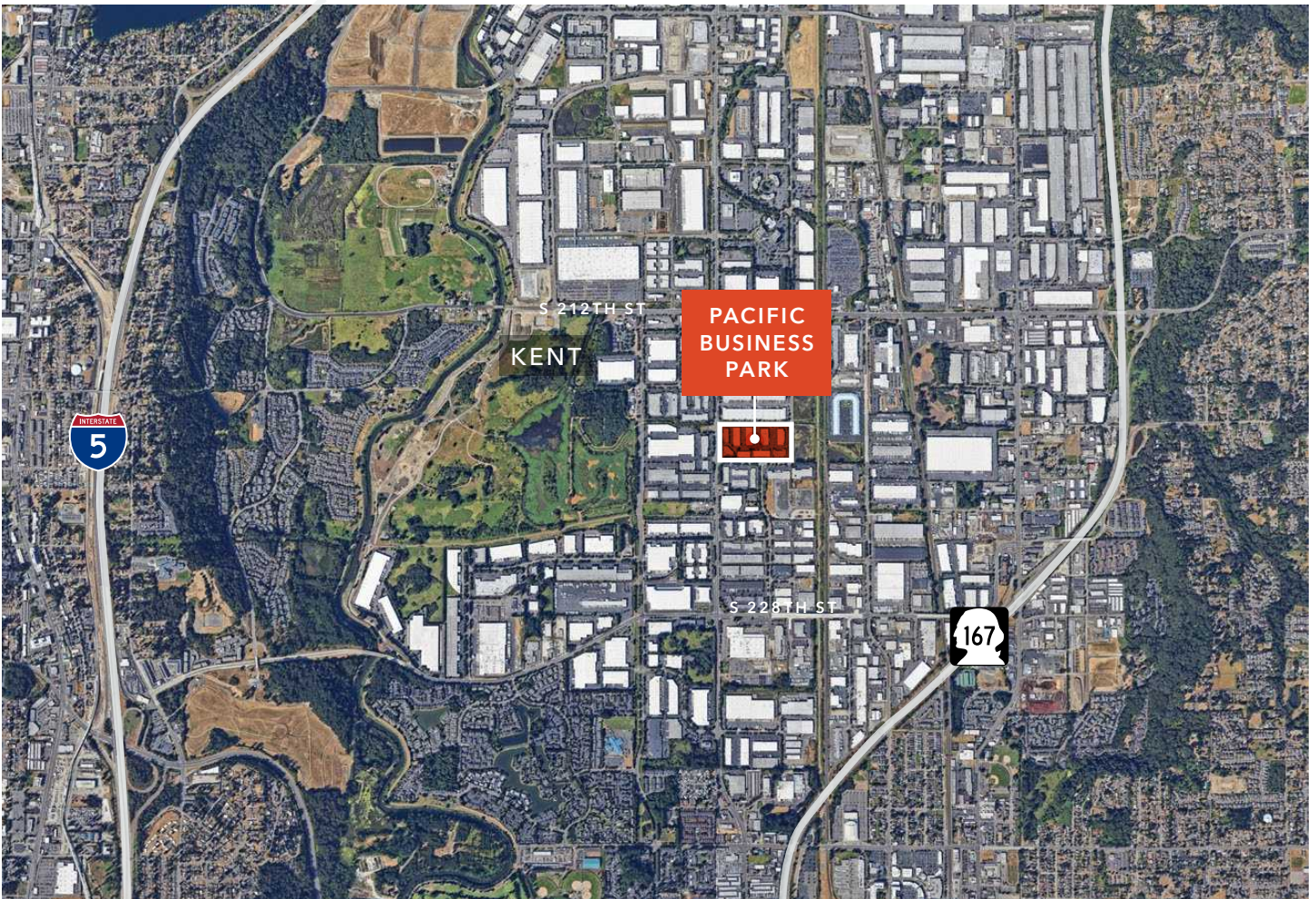
FOR LEASE



L1
ZONING

5 MIN
TO SR-167

14 MIN
TO SEATAC AIRPORT



KIDDER.COM

This information supplied herein is from sources we deem reliable. It is provided without any representation, warranty, or guarantee, expressed or implied as to its accuracy. Prospective Buyer or Tenant should conduct an independent investigation and verification of all matters deemed to be material, including, but not limited to, statements of income and expenses. Consult your attorney, accountant, or other professional advisor.

