

SOUTH 200TH ST INDUSTRIAL BLDG

SEATTLE/PUGET SOUND
SOUTHEND

2363 S 200th Street
SeaTac, WA 98198



FOR LEASE

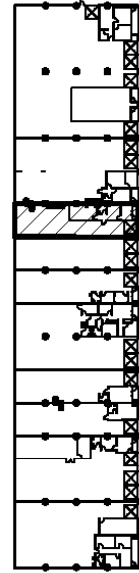
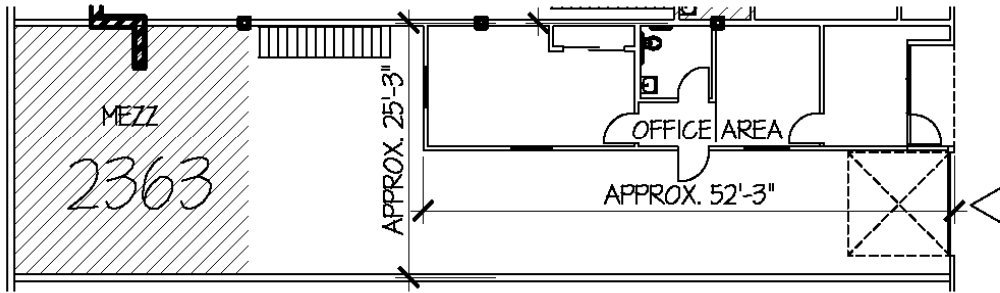
±2,325 SF

2363



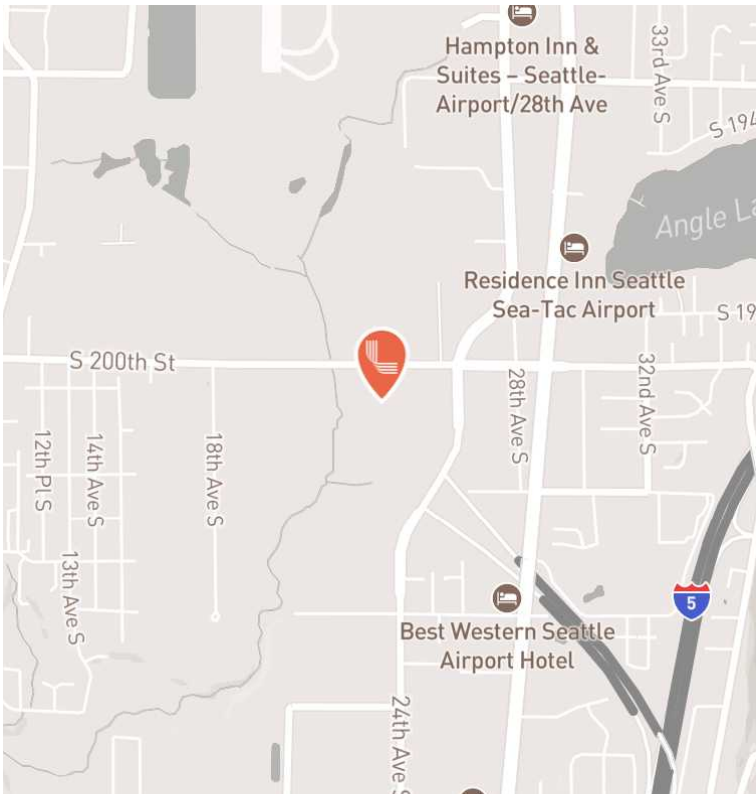
LEASED BY





Key Plan UPPER LEVEL

- ▶ DOCK HIGH DOOR
- ▷ GRADE LEVEL DOOR



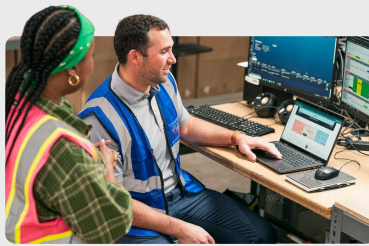
BUILDING SPECIFICATIONS

Total SF (Office SF)	2,325 SF (658 SF)
Loading	1 grade level door
Clear Height	16'
Lease Rate	Call Broker for Pricing
NNN	\$0.40
Availability	Available Now
Location	Excellent Access to I-5 & SR-509

Committed to Driving Value for Our Customers

Properties with a Competitive Edge

Our scale, proprietary data and local relationships allow our 1,200+ skilled team members to help customers stay ahead of market trends.

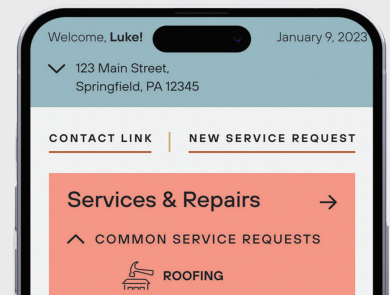


Best-in-Class Customer Service

Our on-the-ground regional teams provide you with local expertise, leveraging data-driven insights to find the right solutions for your business.

Link+

Our digital customer experience platform provides easy access to your property management teams, lease documents, billing and service requests. Sign up today!



500 Million Square Foot Portfolio

Energy Solutions

Link Logistics' award-winning utility management program helps customers save time and money while unlocking energy efficiency opportunities. Enroll today through Link+.



CONTACT INFORMATION



2363 S 200th Street
SeaTac, WA 98198

Kent Channing

kchanning@nai-psp.com
(425) 586-5628

Arie Salomon, SIOR, CCIM

asalomon@nai-psp.com
(425) 586-5636

This document is for informational purposes only and does not constitute an offer or acceptance of a lease. Any lease agreement must be in writing and signed by the landlord. No representations or warranties are made except as expressly stated in a signed lease. Information is provided "as is" and may be subject to errors or change without notice.



LEASED BY

