

714 S 27TH STREET



DOWNTOWN TACOMA OFFICE FOR LEASE

BUILDING INFORMATION

- \$22/SF Modified Gross
- Existing security system, cardkey access, and cabling
- Furniture included
- ADA accessible
- Easy freeway access
- Abundant, free surface parking
- Join Goodwill and Safe Streets; Ideal for non-profits

AVAILABLE SUITES

- 17,986 SF, divisible to 4,505 SF
 - 1st Floor: 8,300 SF, divisible to 4,505 SF, 5,883 SF, or 6,922 SF
 - 2nd Floor: 9,686 SF with existing furniture

JOHN BAUDER, CCIM
jbauder@lee-associates.com
D 253.238.0043

HARRISON LAIRD
hlaird@lee-associates.com
D 253.238.0044

 **LEE &
ASSOCIATES**
COMMERCIAL REAL ESTATE SERVICES

714 S 27TH STREET

TACOMA, WA

Available Spaces

1st Floor | ± 8,300 SF (Divisible to 4,505 SF, 5,883 SF or 6,922 SF)



Available



Common Space, Available to Lease



Available with 90-Day Notice



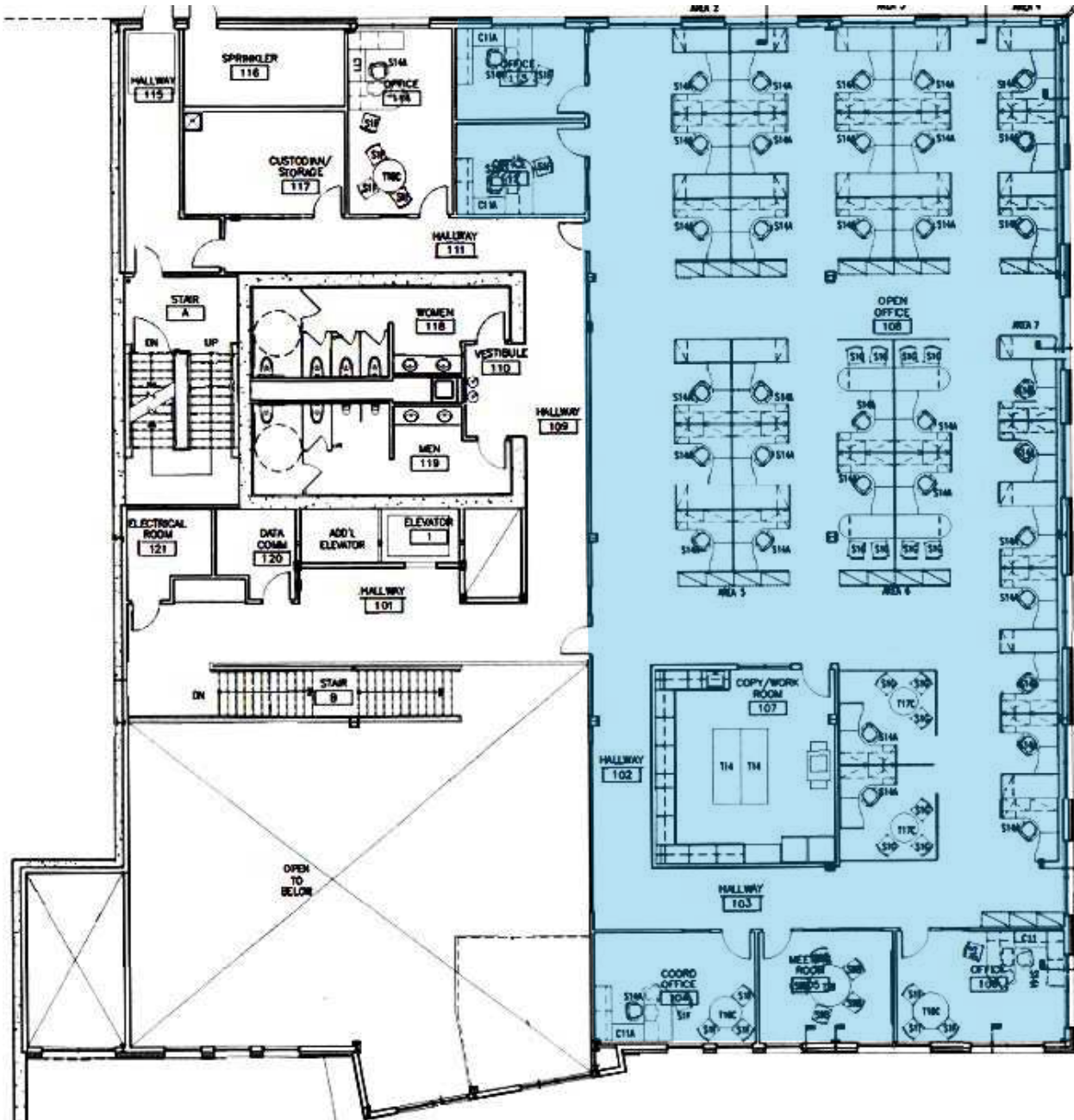
For Lease

714 S 27TH STREET

TACOMA, WA

Available Spaces

2nd Floor | ± 9,686 SF



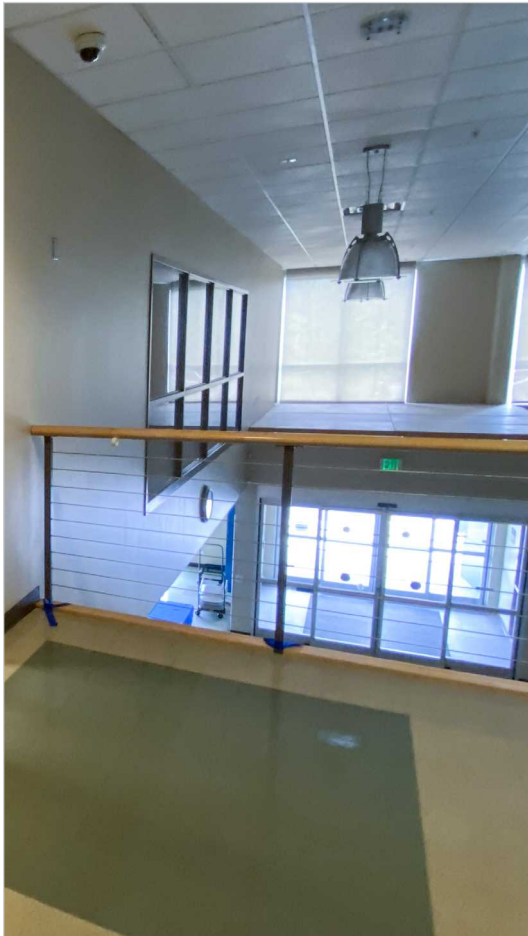
For Lease

714 S 27TH STREET

TACOMA, WA

For Lease

QUALITY OFFICE SPACE
ON THE 2ND FLOOR WITH
ELEVATOR ACCESS, LARGE
WORK ROOM, 7 PRIVATE
OFFICES, AND 32 CUBICLES.



TURNKEY SPACE WITH
EXISTING FURNITURE
INCLUDED.

ABUNDANT, FREE
SURFACE PARKING.



714 S 27TH STREET

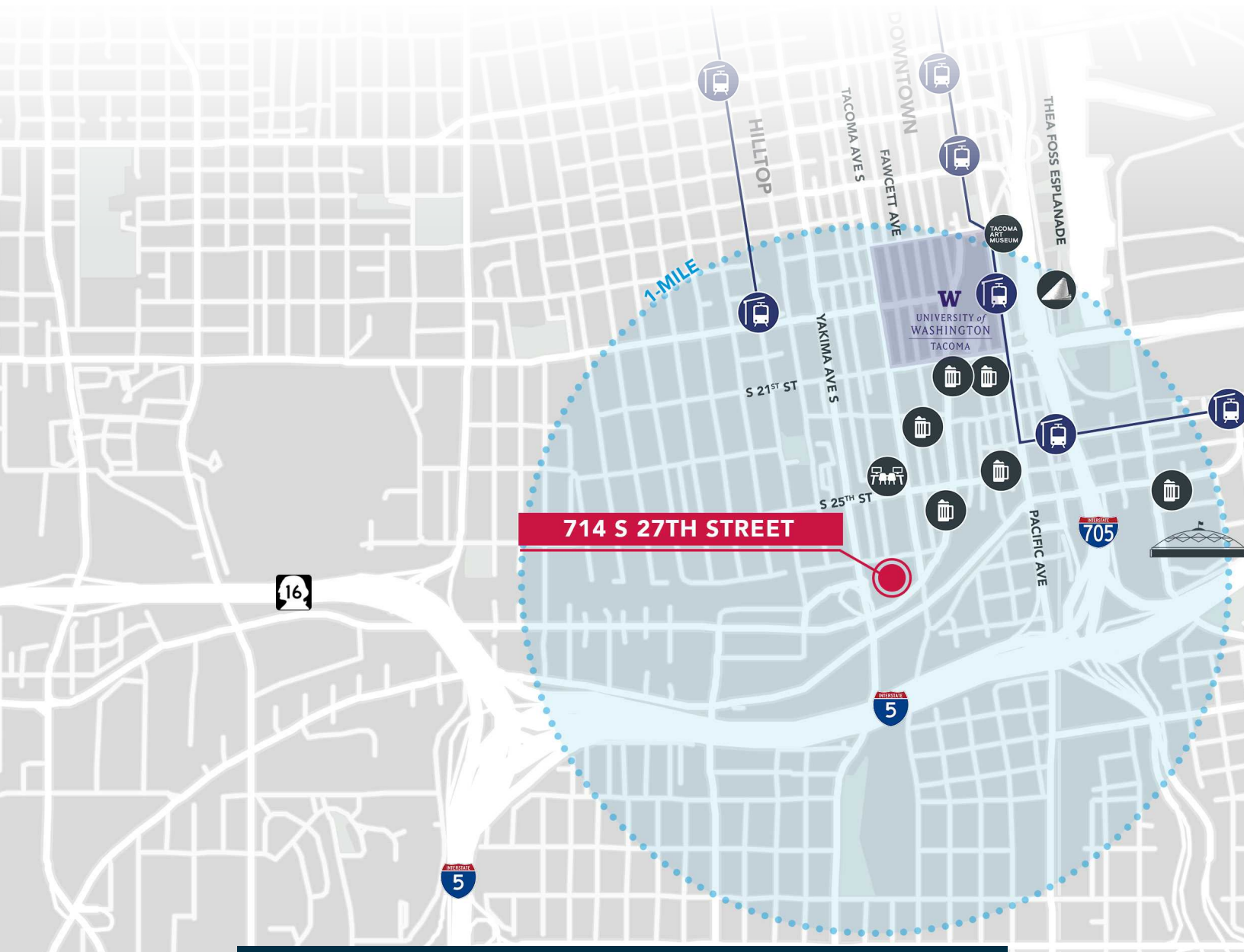
TACOMA, WA

Location

SPACES THAT FIT YOUR BUSINESS.

Just minutes from downtown Tacoma, located within easy reach of acclaimed restaurants, coffee shops, boutiques, and the Tacoma Link Light Rail which provides direct access to the UW Tacoma campus, the Theater District, Art Museums and the city's waterfront attractions.

Enjoy close proximity to major hospitals like MultiCare and St. Joseph Medical Center, and quick freeway access to I-5, I-705, and Hwy 16.



Premier Access to Downtown, Transit & I-5