



1879 N. Commercial Avenue

Suite B Pasco, WA 99301

Contact

Kirt Shaffer | 509.521.9183
kirt@tippettcompany.com

SUMMARY

± 3,000 SF Industrial Warehouse Space. This property has many possibilities with additional options available.

- Laydown yard space also available
- Dock Well access available
- Clear span space with 24' eave height
- Possible mezzanine office and/or storage space available

ZONING

I-1 LIGHT INDUSTRIAL

UTILITIES

Power, Water, Sewer – Separately Metered

Also available to Yard space

FOR LEASE - Industrial and Yard

±3,000 SF Industrial \$1.25/sf + NNN
2024 NNN Estimated at \$0.10/sf

±1 acre fenced yard \$0.85/sf + Utilities

ADDRESS

1879 N. Commercial Avenue
Pasco, WA 99301

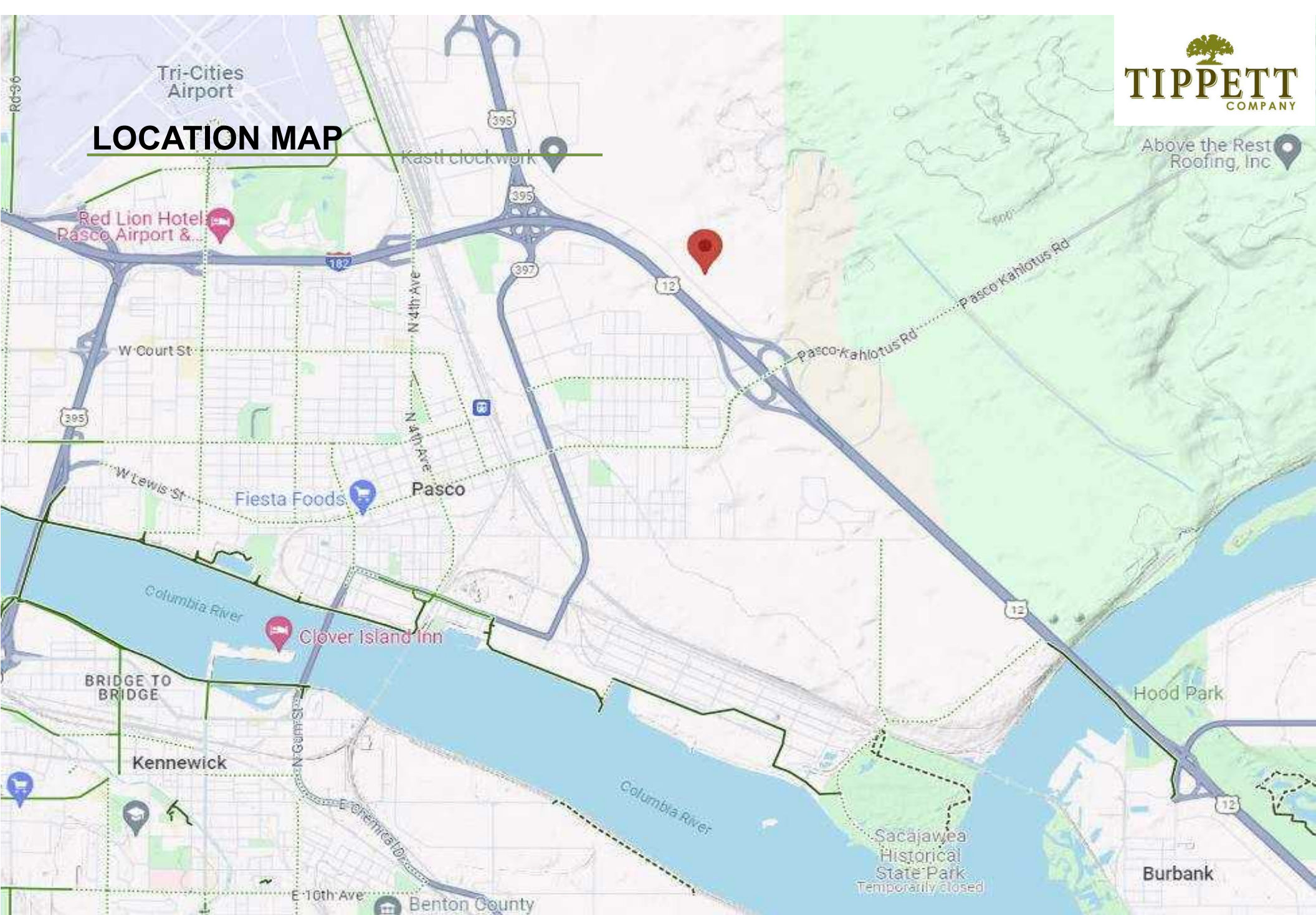
TAX PARCEL

113-510-097

CONTACT


Kirt Shaffer
Office 509.545.3355
Mobile 509.521.9183
kirt@tippettcompany.com
2815 St, Andrews Loop, Suite F
Pasco, WA 99301

LOCATION MAP



No warranty or representation, expressed or implied, is made as to the accuracy of information contained herein, and same is submitted subject to errors, omission, change of price, rental or other conditions and withdrawal without notice. Purchaser and his/her agent are responsible for independently verifying all presented information.

AERIAL VIEW



1879 N Commercial Ave

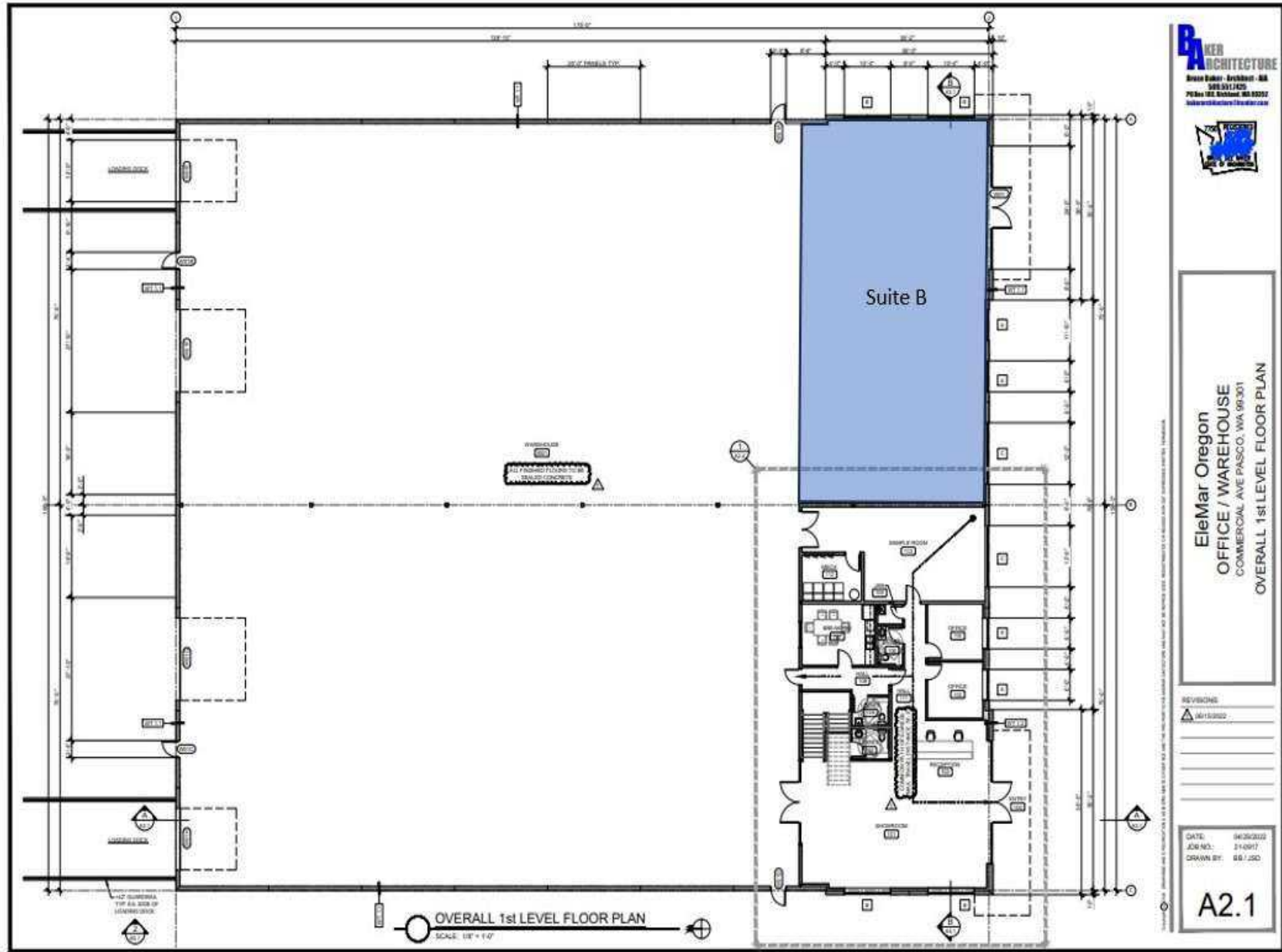
No warranty or representation, expressed or implied, is made as to the accuracy of information contained herein, and same is submitted subject to errors, omission, change of price, rental or other conditions and withdrawal without notice. Purchaser and his/her agent are responsible for independently verifying all presented information.

PHOTOS



No warranty or representation, expressed or implied, is made as to the accuracy of information contained herein, and same is submitted subject to errors, omission, change of price, rental or other conditions and withdrawal without notice. Purchaser and his/her agent are responsible for independently verifying all presented information.

FLOOR PLAN



No warranty or representation, expressed or implied, is made as to the accuracy of information contained herein, and same is submitted subject to errors, omission, change of price, rental or other conditions and withdrawal without notice. Purchaser and his/her agent are responsible for independently verifying all presented information.

YARD AREA

An aerial photograph of a property. A red dashed line outlines a specific area, labeled 'Subject Property'. A red location pin is placed on a dark paved area, labeled '1879 N Commercial Ave'. The surrounding area includes a large white building, a parking lot with several vehicles, and a road.

**Subject
Property**

1879 N Commercial Ave