

FOR LEASE



PROFESSIONAL & MEDICAL OFFICE BUILDING

AVAILABLE SPACE |

SUITE L2

Suite Size: ±600 SF

Lease Rate: \$1,350 per month, Modified Gross

**Modified Gross excludes janitorial services*

- Elevator serviced
- 2 Private Offices
- Break Area
- Furniture negotiable

FRANKLIN PARK PROFESSIONAL CENTER

12 E Rowan Avenue
Spokane, WA 99207

[View Location](#)



BRANDON PETERSON

509.755.7541

brandonp@kiemleahagood.com

RICHARD FOX

509.755.7580

richard.fox@kiemleahagood.com

**KIEMLE
HAGOOD**

AREA & PROPERTY INFORMATION

Total Building Size: ±17,048 SF

Parcel Number: 36323.2007

Zoning: General Commercial (GC-70)

Parking: 32 Stalls

- Excellent location
- Building tenants include Medical & Professional Services
- Close proximity to retail and medical services
- Adjacent to Division & Rowan lighted intersection

Traffic Counts | North & South bound Division | ±53,742 ADT
ADT: Average Daily Traffic



FRANKLIN PARK PROFESSIONAL CENTER

12 E Rowan Avenue
Spokane, WA 99207

NEIGHBORING BUSINESSES INCLUDE

Providence Holy Family Hospital
PAML Patient Services
LabCorp
Lilac City Behavioral Services
Ross
Ulta
Trader Joe's
Guitar Center
Burlington Coat Factory
Chase Bank
...and more!



FRANKLIN PARK PROFESSIONAL CENTER

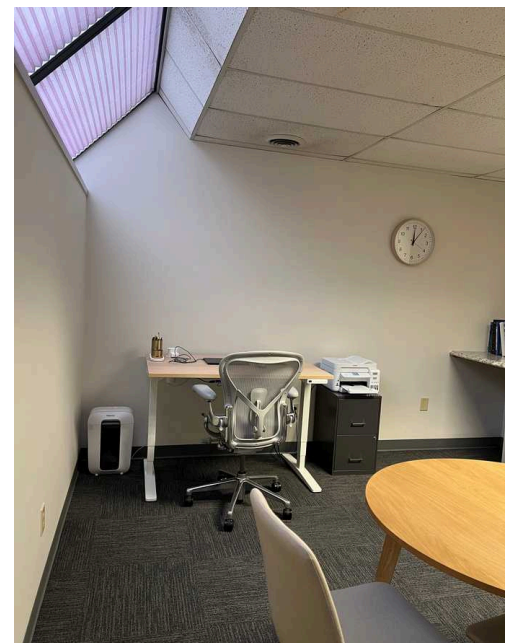
12 E Rowan Avenue
Spokane, WA 99207

LOWER LEVEL SUITE

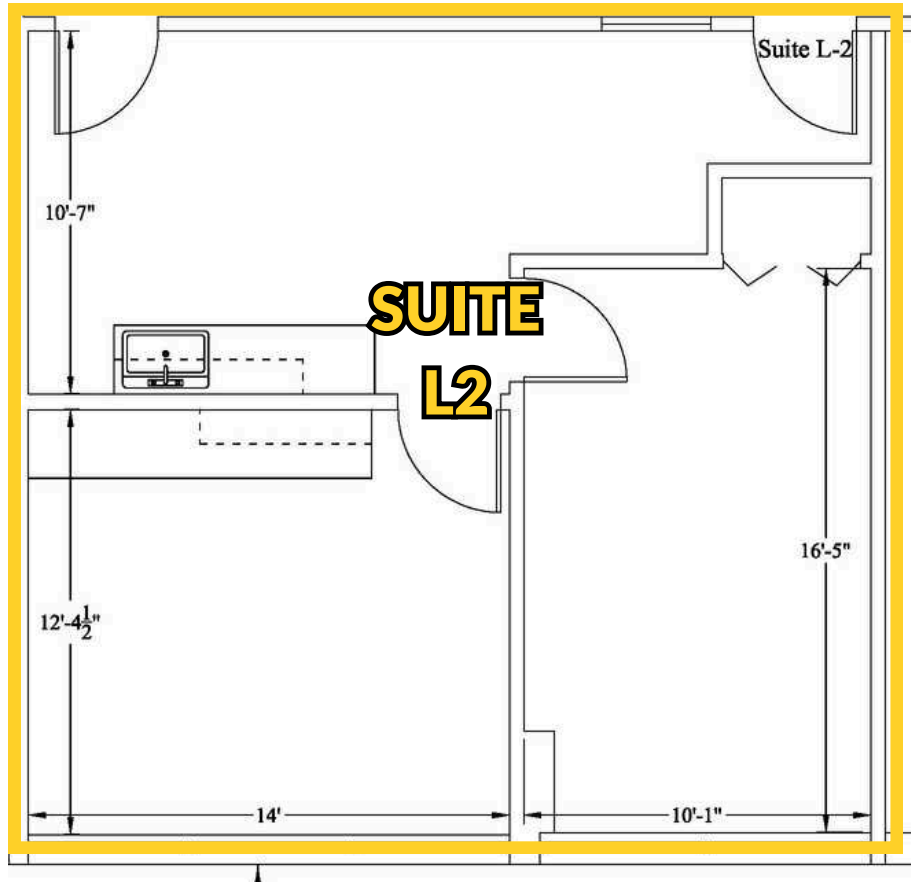
Suite Size:
±600 SF

Lease Rate:
\$1,350/Month, Modified Gross

- Elevator serviced
- 2 Private offices
- Break room
- Furniture negotiable



SUITE L2 - FLOOR PLAN



FRANKLIN PARK PROFESSIONAL CENTER

12 E Rowan Avenue
Spokane, WA 99207

BRANDON PETERSON

509.755.7541

brandonp@kiemleahagood.com

RICHARD FOX

509.755.7580

richard.fox@kiemleahagood.com

OFFICE LOCATIONS

SPOKANE | COEUR D'ALENE | TRI-CITIES | MISSOULA

601 WEST MAIN AVENUE, SUITE 400
SPOKANE, WA 99201



**KIEMLE
HAGOOD**

No warranty or representation, expressed or implied, is made by Kiemle Hagood, its agents or its employees as to the accuracy of the information contained herein. All information furnished is from sources deemed reliable and submitted subject to errors, omissions, change of terms and conditions, prior sale, lease or financing, or withdrawal without notice. No one should rely solely on the above information, but instead should conduct their own investigation to independently satisfy themselves. Kiemle Hagood respects the intellectual property of others: If you believe the copyright in your work has been violated through this Website, please contact our office for notice of claims of copyright infringement. For your complaint to be valid under the Digital Millennium Copyright Act of 1998 (DMCA), you must provide the following information when providing notice of the claimed copyright infringement: Identify the material on the Website that you believe infringes your work, with enough detail so that we may locate it on the Website; provide your address, telephone number and email address; provide a statement that you have a good faith belief that the disputed use is not authorized by the copyright owner, its agent, or the law; provide a statement that the information in the notification is accurate, and under penalty of perjury, that the complaining party is authorized to act on behalf of the owner of an exclusive right that is allegedly infringed; and provide your physical or electronic signature. Upon receiving your complaint, Kiemle Hagood will, upon review, remove content that you believe infringes your copyright if the complaint is found to be valid.