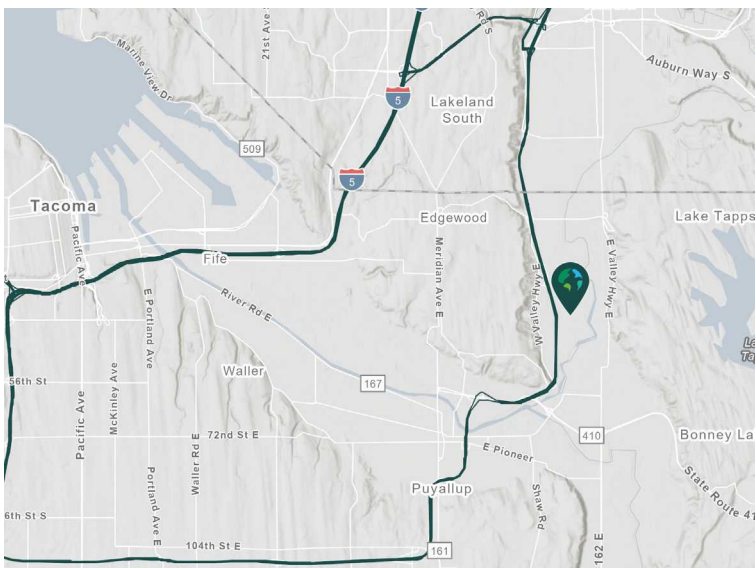


161,200 SF

**3514 142nd Ave E, Suite 400
Sumner, WA 98390**

Prologis Park Sumner 3



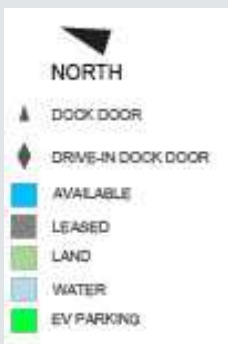
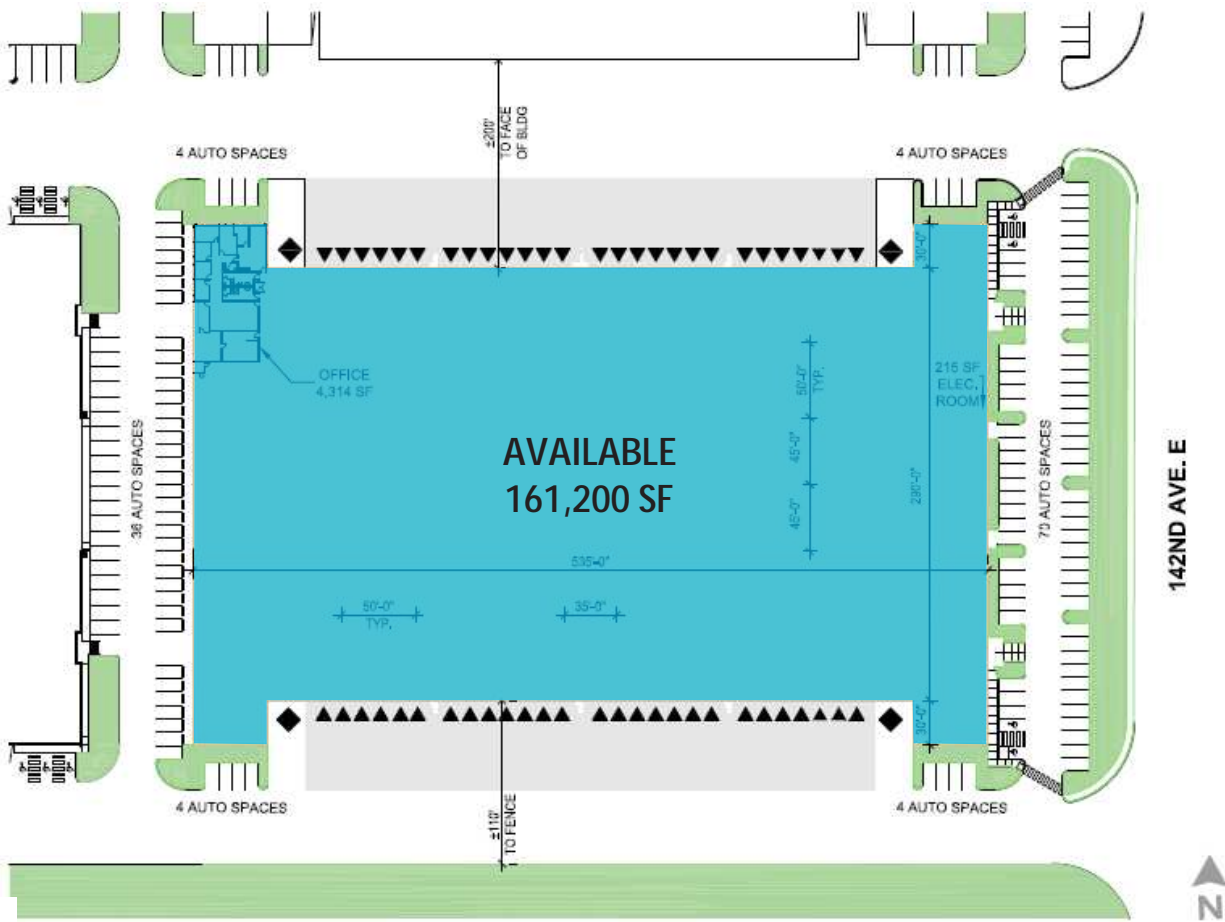
- Located in Prologis Park Sumner
- Approx 12 miles to Port of Tacoma
- Visibility to 142nd Street
- Direct access to SR-167 via 24th Street

Property Features

Available Space	161,200 SF
Office SF	4,314 SF
Clear Height	30'
Column Spacing	50' x 50'
Dock Doors	54
Drive-in Doors	4
Car Parking Spaces	114
Yard Space	± 2.45 Acres
Sprinkler	ESFR
Suite 400 Occupancy	Available Now



Unlock the full potential of your warehouse with one strategic, single-source partner.

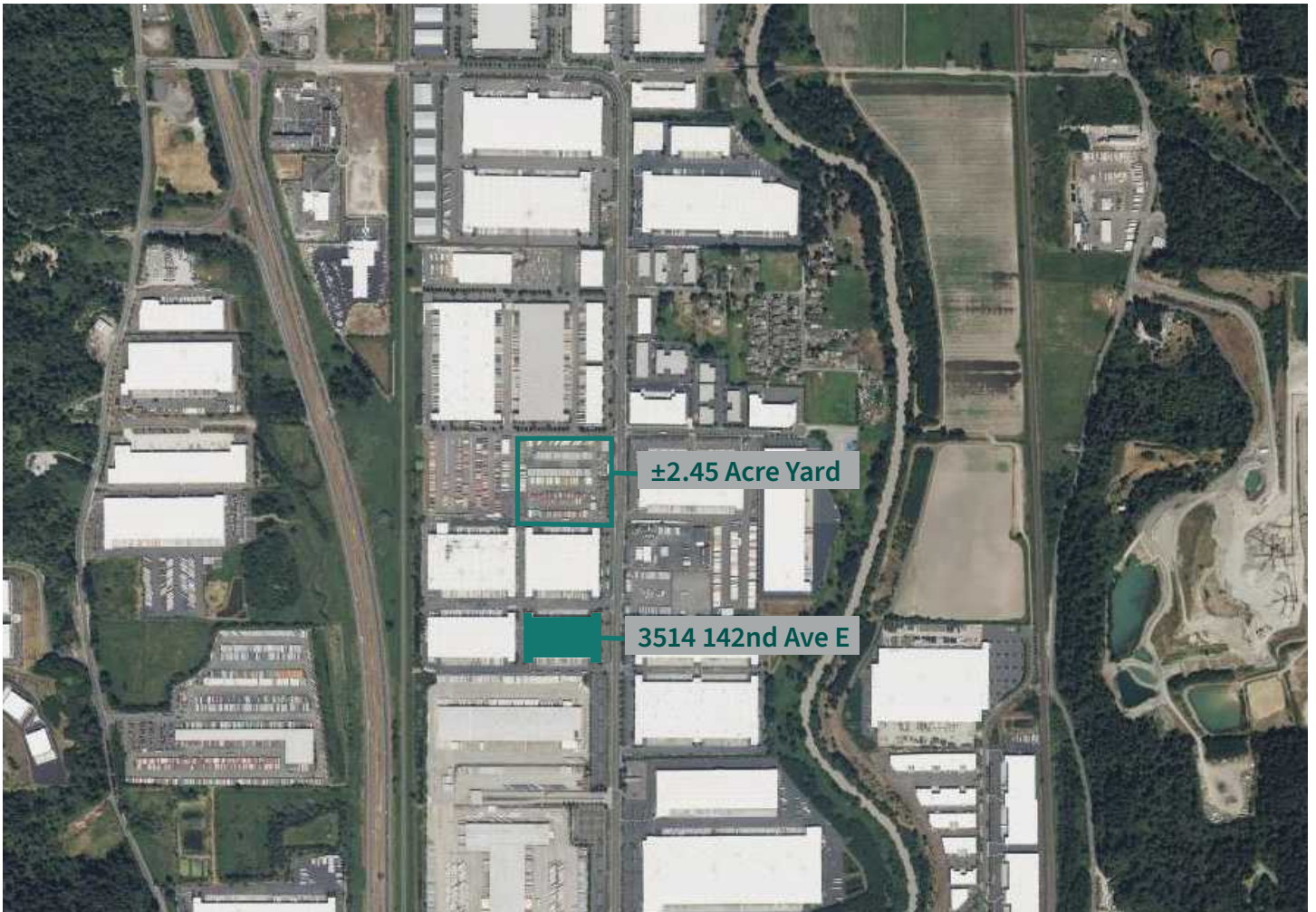


HIGHLIGHTS

- Shell: 161,200 SF
- Office: 4,314 SF
- Warehouse: 156,886 SF
- Clear Height: 30'
- Dock High Doors: 54
- Grade Level Doors: 4
- Available Now
- ±2.45 Acre Yard



Unlock the full potential of your
warehouse with one strategic,
single-source partner.



CBRE

CBRE, Inc
John Gilliland
john.gilliland@cbre.com
ph +1 206 226 7930

CBRE, Inc
John Sullivan
john.sullivan@cbre.com
ph +1 206 719 2902

Prologis
Lucca Merlino
lmerlino@prologis.com
ph +1 206 414 7621
prologis.com