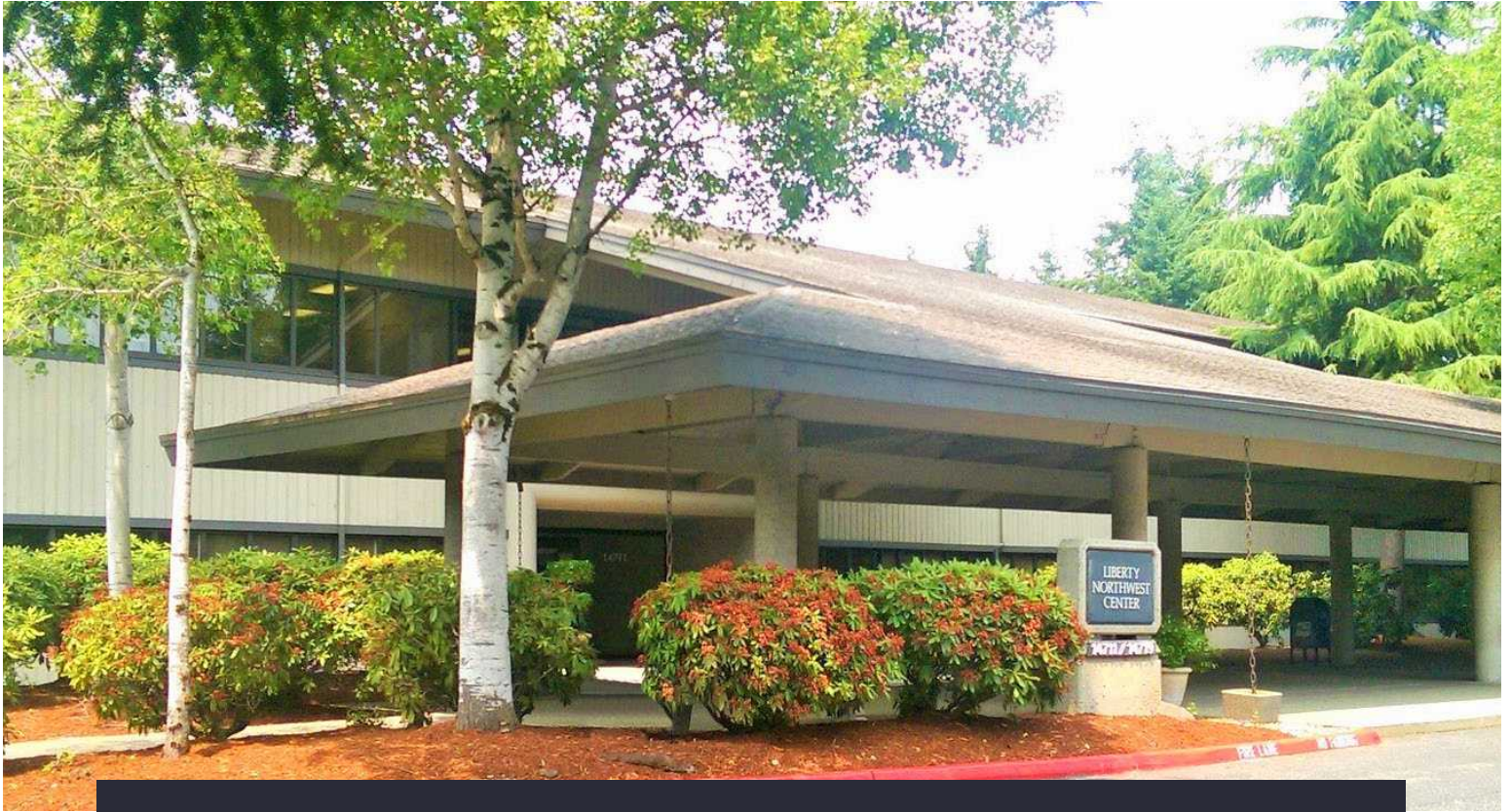


14711 NE 29<sup>TH</sup> PLACE | BELLEVUE, WA 98007

# LIBERTY NORTHWEST C E N T E R



Great **Location** • **Affordable** Office Space • Abundant **Parking**

## AVAILABLE SPACE

<b>Suite 105</b>	1,317 RSF	Available Now
<b>Suite 109</b>	3,681 RSF	Available Now
<b>Suite 204</b>	2,144 RSF	Available Now
<b>Suite 215</b>	2,661 RSF	Available Now
<b>Suite 216</b>	1,382 RSF	Available Now
<b>Suite 218</b>	1,716 RSF	Available Now



**TYLER SLONE**  
425.274.4281  
slone@broderickgroup.com

The information contained herein has been given to us by the owner or sources that we deem reliable. We have no reason to doubt its accuracy, but we do not guarantee it. Prospective tenants should carefully verify all information contained herein.

# LIBERTY NORTHWEST C E N T E R

## BUILDING INFORMATION

**Location:** Building A  
14711 NE 29th Place, Bellevue, WA 98007

**Year Built:** 1980

**Project Size:** 66,688 RSF on two (2) floors

**Load Factor:** 13.43%

**Rate:** \$30.00/SF, Fully Serviced

**Parking**

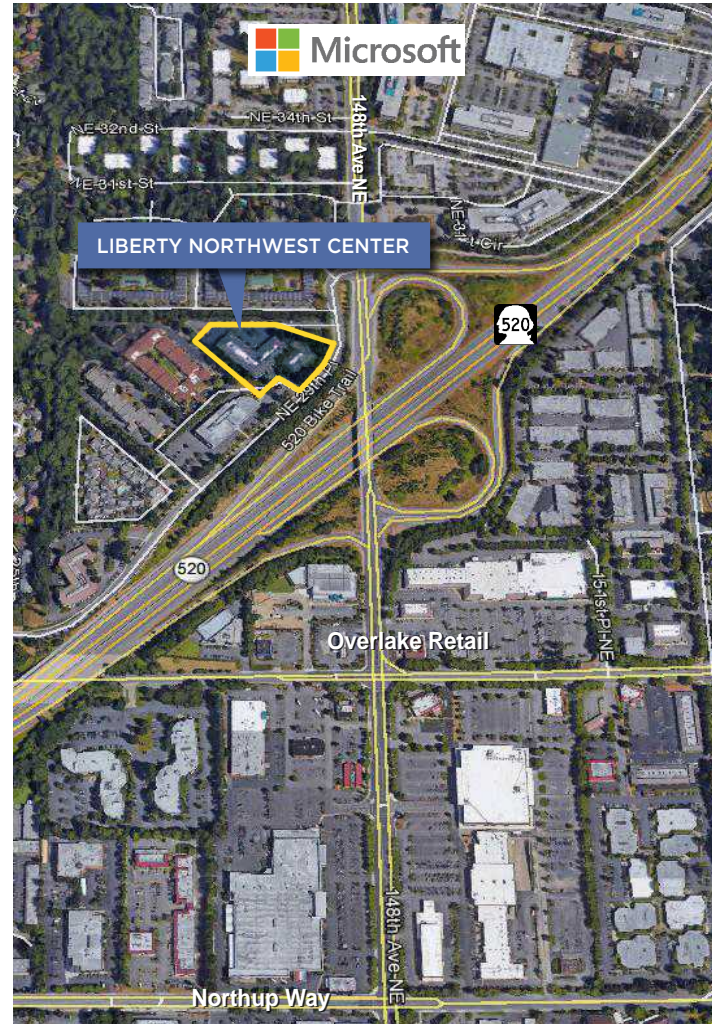
- 4/1,000 SF
- No cost
- Abundant excess parking via cross-easement (over 1,000 stalls)

**Access:**

- Immediate access to SR-520 and 148th Ave NE

**Amenities:**

- Building conference room (seats 20)
- Close to Microsoft, Nintendo and other major corporations
- Restaurants and retail services located in nearby Overlake area

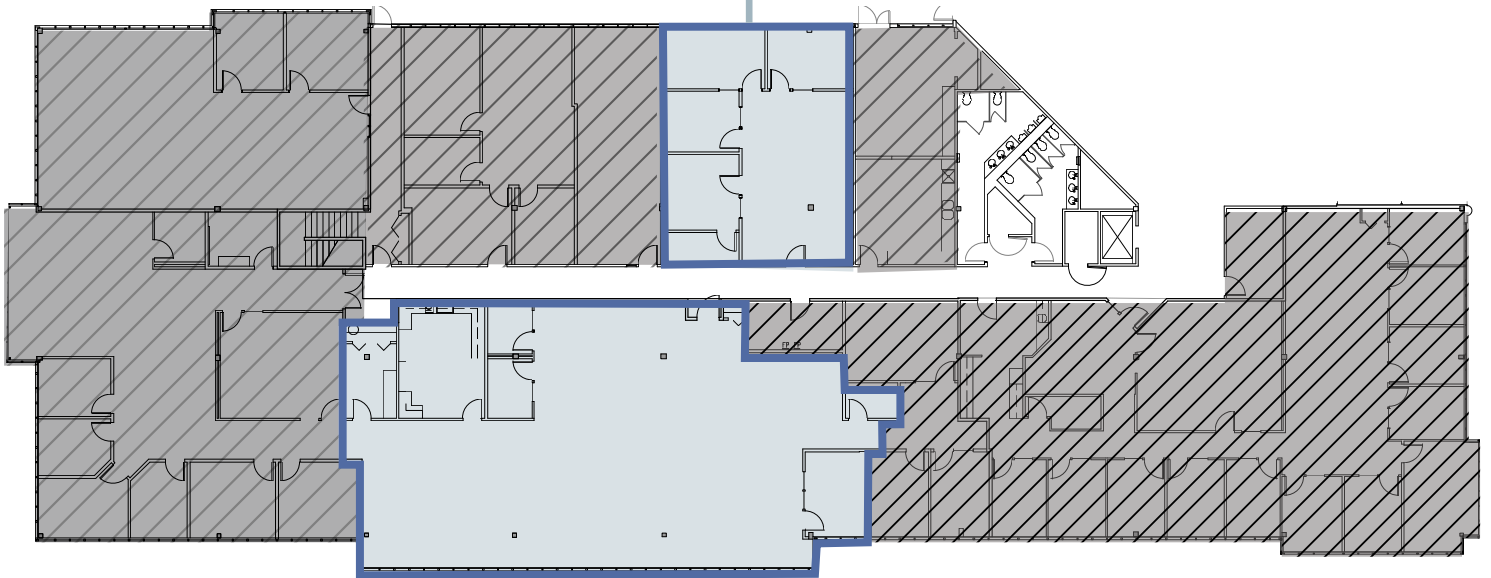


14711 NE 29<sup>TH</sup> PLACE | BELLEVUE, WA 98007

# LIBERTY NORTHWEST C E N T E R

## Suite 105

1,317 SF • Available Now



## Suite 109

3,681 SF • Available Now

 [CLICK TO VIEW VIRTUAL TOUR](#)



14711 NE 29<sup>TH</sup> PLACE | BELLEVUE, WA 98007

# LIBERTY NORTHWEST C E N T E R

