



# PUYALLUP MEDICAL CLINIC

*6,566 SF Single Story Medical  
Office Building For Lease*

800 S MERIDIAN, PUYALLUP, WA 98371

# PUYALLUP MEDICAL CLINIC



## PROPERTY HIGHLIGHTS

Medical clinic buildout - 6,566 SF  
(entire building)

Join the expansive medical hub of Good Samaritan Hospital

Great exposure on S Meridian & easy access to SR-512

Ample parking for medical users at 8.5/1,000 RSF

Located in downtown Puyallup with immediate access to Good Samaritan Hospital

**DREW FRAME, SIOR**  
253.948.7032  
drew.frame@kidder.com

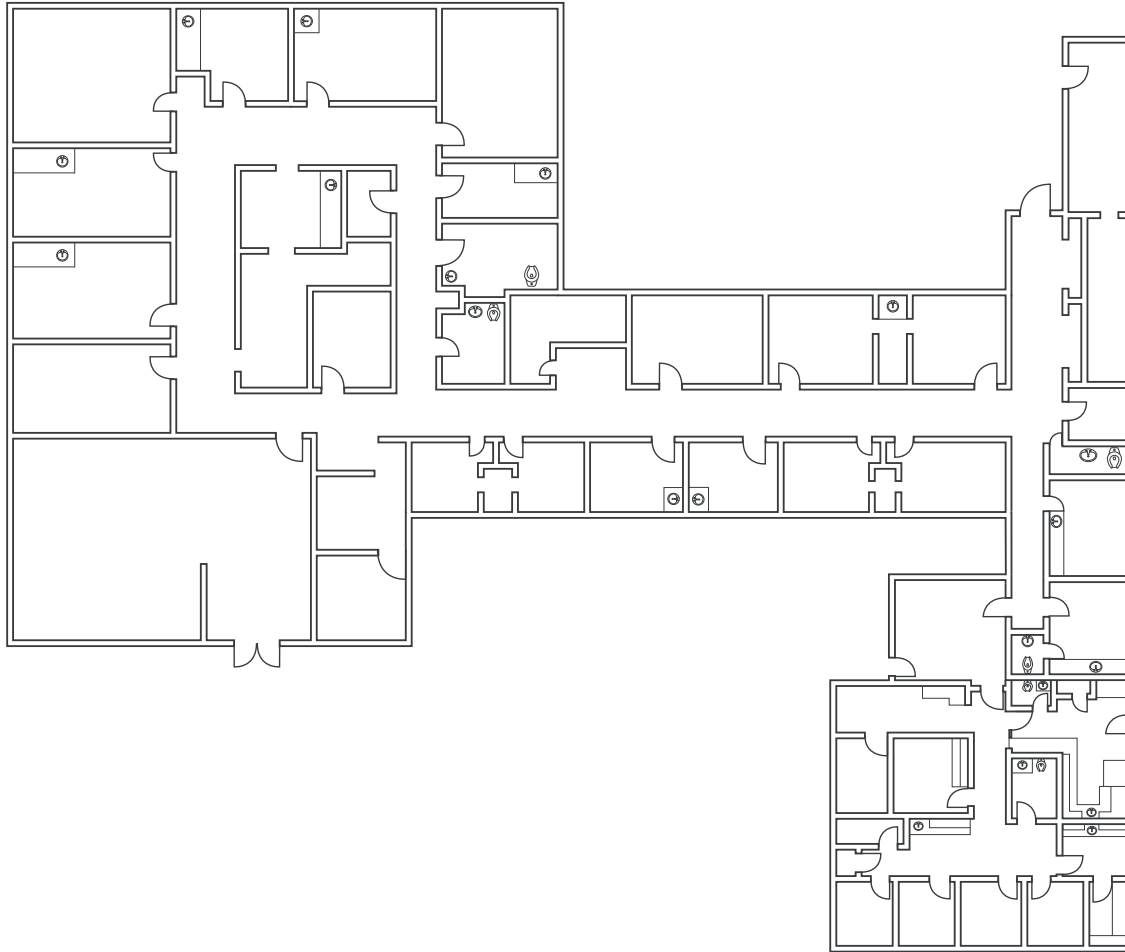
**RYAN KESHAW**  
206.949.1334  
ryan.kershaw@kidder.com

## KIDDER.COM

This information supplied herein is from sources we deem reliable. It is provided without any representation, warranty, or guarantee, expressed or implied as to its accuracy. Prospective Buyer or Tenant should conduct an independent investigation and verification of all matters deemed to be material, including, but not limited to, statements of income and expenses. Consult your attorney, accountant, or other professional advisor.



# FLOOR PLAN



6,566 SF

AVAILABLE

*RATE*

CONTACT BROKERS

[KIDDER.COM](http://KIDDER.COM)

This information supplied herein is from sources we deem reliable. It is provided without any representation, warranty, or guarantee, expressed or implied as to its accuracy. Prospective Buyer or Tenant should conduct an independent investigation and verification of all matters deemed to be material, including, but not limited to, statements of income and expenses. Consult your attorney, accountant, or other professional advisor.

# PUYALLUP MEDICAL CLINIC



[KIDDER.COM](http://KIDDER.COM)

This information supplied herein is from sources we deem reliable. It is provided without any representation, warranty, or guarantee, expressed or implied as to its accuracy. Prospective Buyer or Tenant should conduct an independent investigation and verification of all matters deemed to be material, including, but not limited to, statements of income and expenses. Consult your attorney, accountant, or other professional advisor.



PUYALLUP MEDICAL CLINIC

21 MIN

TACOMA

30 MIN

FEDERAL WAY

25 MIN

LAKESIDE



KIDDER.COM

This information supplied herein is from sources we deem reliable. It is provided without any representation, warranty, or guarantee, expressed or implied as to its accuracy. Prospective Buyer or Tenant should conduct an independent investigation and verification of all matters deemed to be material, including, but not limited to, statements of income and expenses. Consult your attorney, accountant, or other professional advisor.

