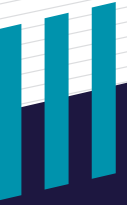


FOR SUBLEASE

# 6847 S. 220<sup>TH</sup> STREET

KENT, WA 98032



**3,458 SF AVAILABLE**



# PROPERTY FEATURES

## AVAILABLE SPACE

Office	564 SF
Warehouse	2,894 SF
<b>TOTAL AVAILABLE</b>	<b>3,458 SF</b>



1 Grade Level Door  
18' Clear Height



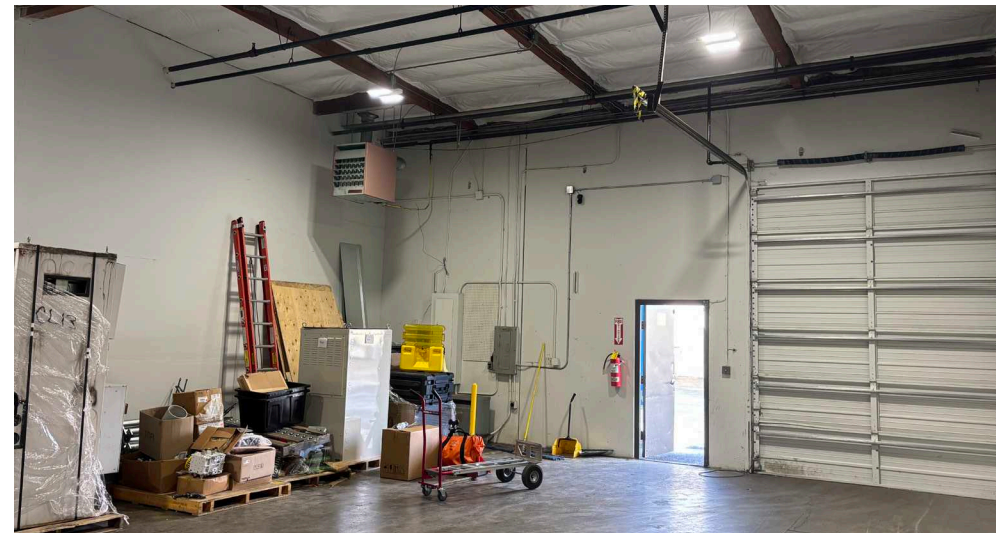
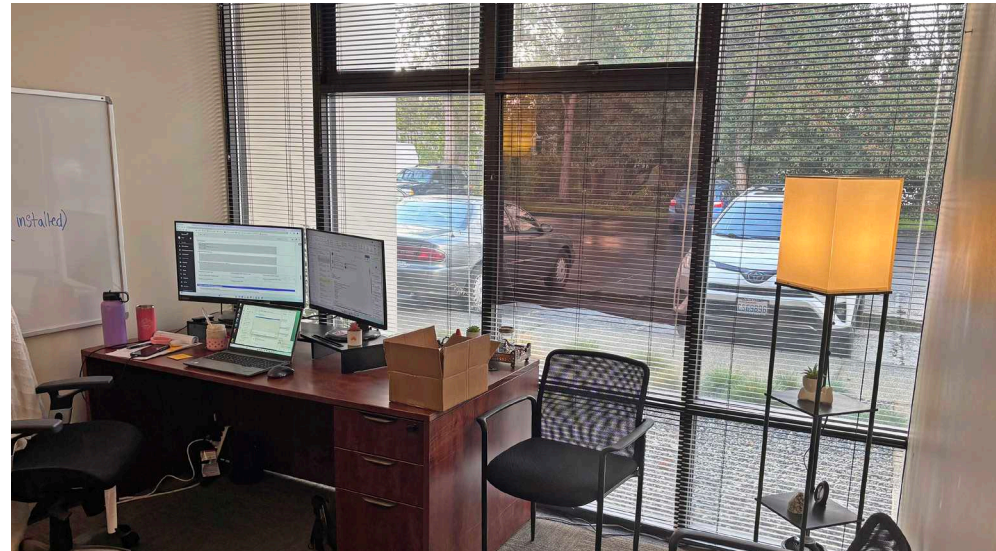
Available  
April 1, 2026



Sublease term  
through April 30, 2029



\$1.41/SF  
Blended





# FLOOR PLAN





For more information, please contact:

MCCALED NESSLER-CASS  
Associate  
+1 971 806 2379  
mccaleb.nesslercass@cushwake.com

CONNOR CREE  
Executive Director  
+1 206 521 0289  
connor.cree@cushwake.com

TREVOR YOUNGREN  
Managing Director  
+1 425 443 5869  
trevor.youngren@cushwake.com



Cushman & Wakefield | 1601 Union Street | Suite 1100 | Seattle, WA 98101

[cushmanwakefield.com](https://www.cushmanwakefield.com)

©2026 Cushman & Wakefield. All rights reserved. The information contained in this communication is strictly confidential. This information has been obtained from sources believed to be reliable but has not been verified. NO WARRANTY OR REPRESENTATION, EXPRESS OR IMPLIED, IS MADE AS TO THE CONDITION OF THE PROPERTY (OR PROPERTIES) REFERENCED HEREIN OR AS TO THE ACCURACY OR COMPLETENESS OF THE INFORMATION CONTAINED HEREIN, AND SAME IS SUBMITTED SUBJECT TO ERRORS, OMISSIONS, CHANGE OF PRICE, RENTAL OR OTHER CONDITIONS, WITHDRAWAL WITHOUT NOTICE, AND TO ANY SPECIAL LISTING CONDITIONS IMPOSED BY THE PROPERTY OWNER(S). ANY PROJECTIONS, OPINIONS OR ESTIMATES ARE SUBJECT TO UNCERTAINTY AND DO NOT SIGNIFY CURRENT OR FUTURE PROPERTY PERFORMANCE.  
PD-181123