

TOK

COMMERCIAL

4610 N ASH STREET

OFFICE SPACE FOR LEASE / SPOKANE, WASHINGTON 99205



CONTACT

DREW ULRICK, SIOR

509.606.5055

drew@tokcommercial.com

KIM MILLET

509.606.5087

kim@tokcommercial.com

HIGHLIGHTS

North Spokane Medical Office

Ample parking

ADA accessible with elevator

On site Management

Co-tenant synergy

Dental hook ups in place

DETAILS

SPACE	SIZE	RATE
Suite 101	1,770 SF	\$19.00/SF
Suite 201	+/- 600 SF	\$19.00/SF

BLDG TYPE	Office	ZONING	O-35
BLDG SIZE	13,101 SF	LEASE TYPE	Full Service
LOT SIZE	25, 180 SF		

UPDATED: 3.20.2026

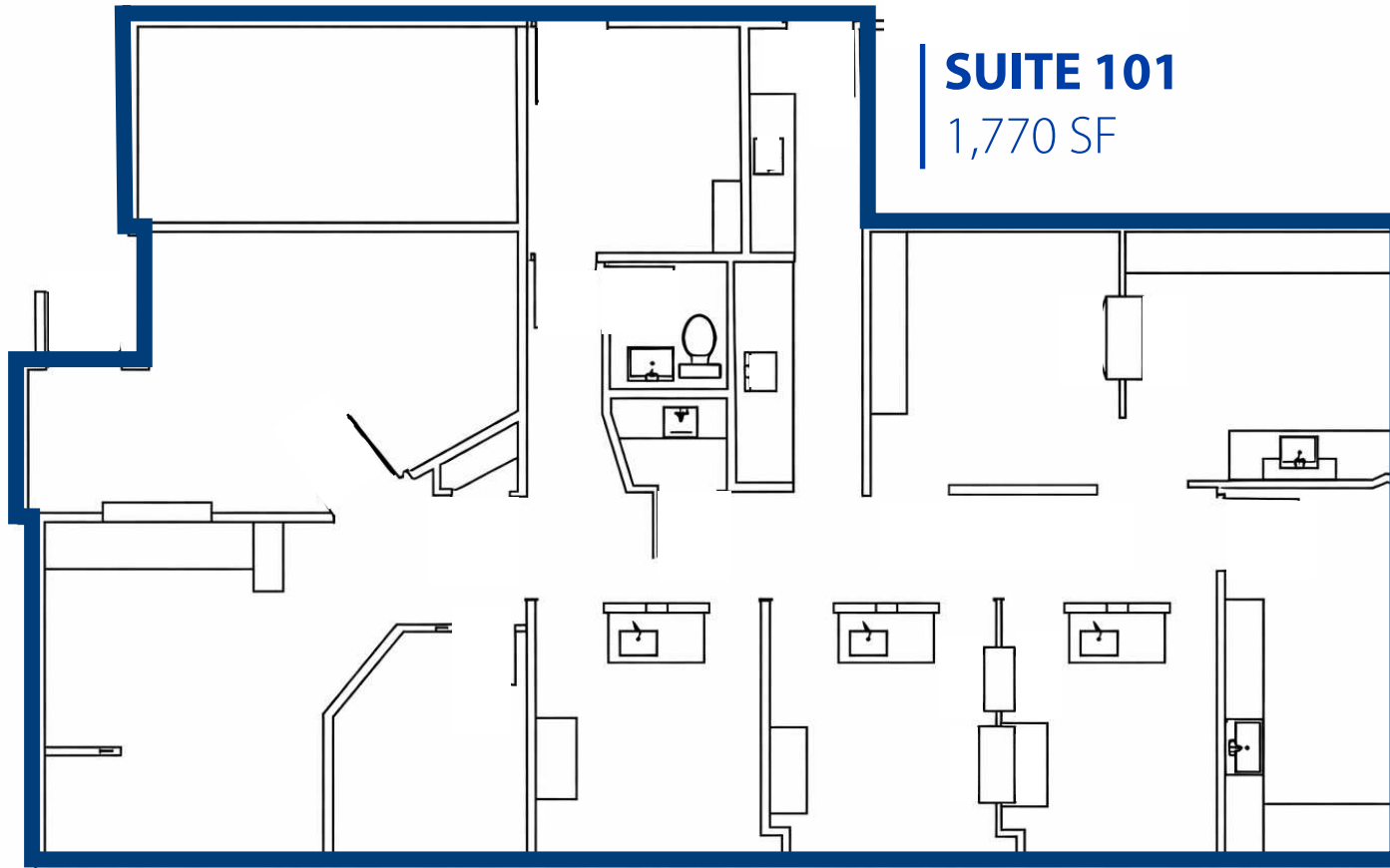
THIS PROPERTY IS EXCLUSIVELY MARKETED BY TOK INLAND NORTHWEST LLC DBA TOK COMMERCIAL

This information was obtained from sources believed reliable but cannot be guaranteed. Any opinions or estimates are used for example only.

TOKCOMMERCIAL.COM

FLOOR PLANS

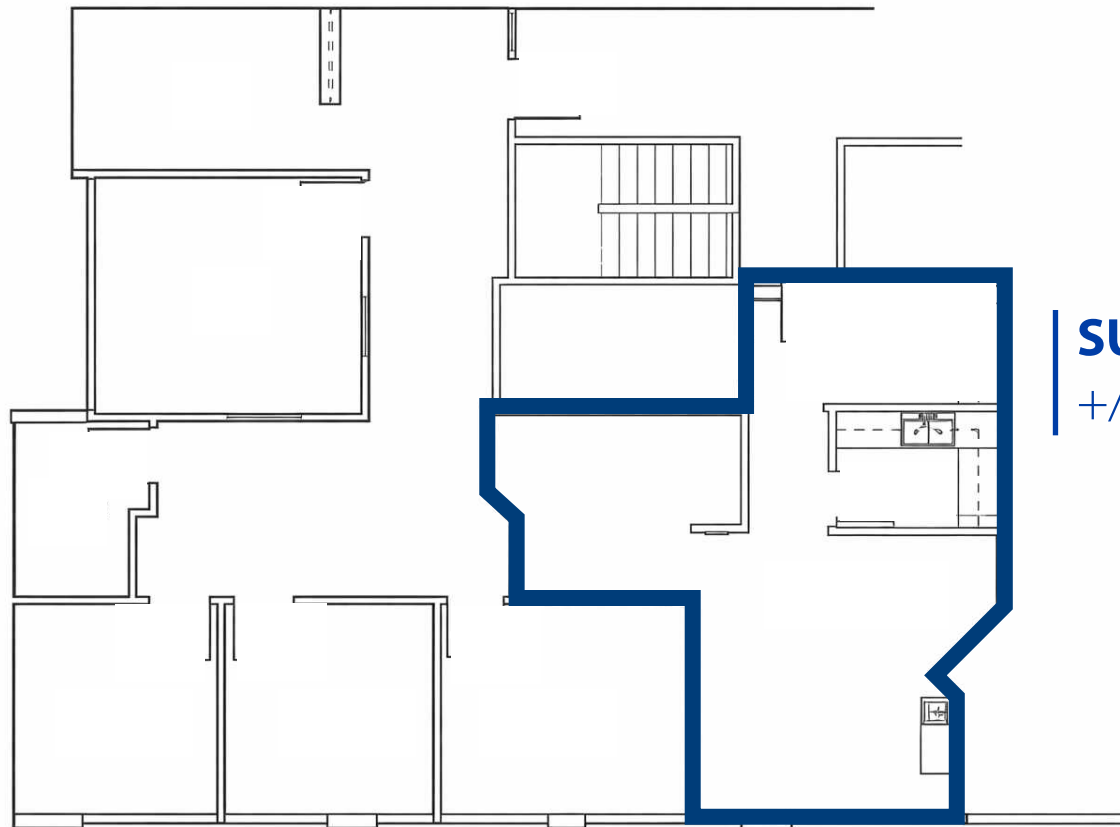
SUITE 101



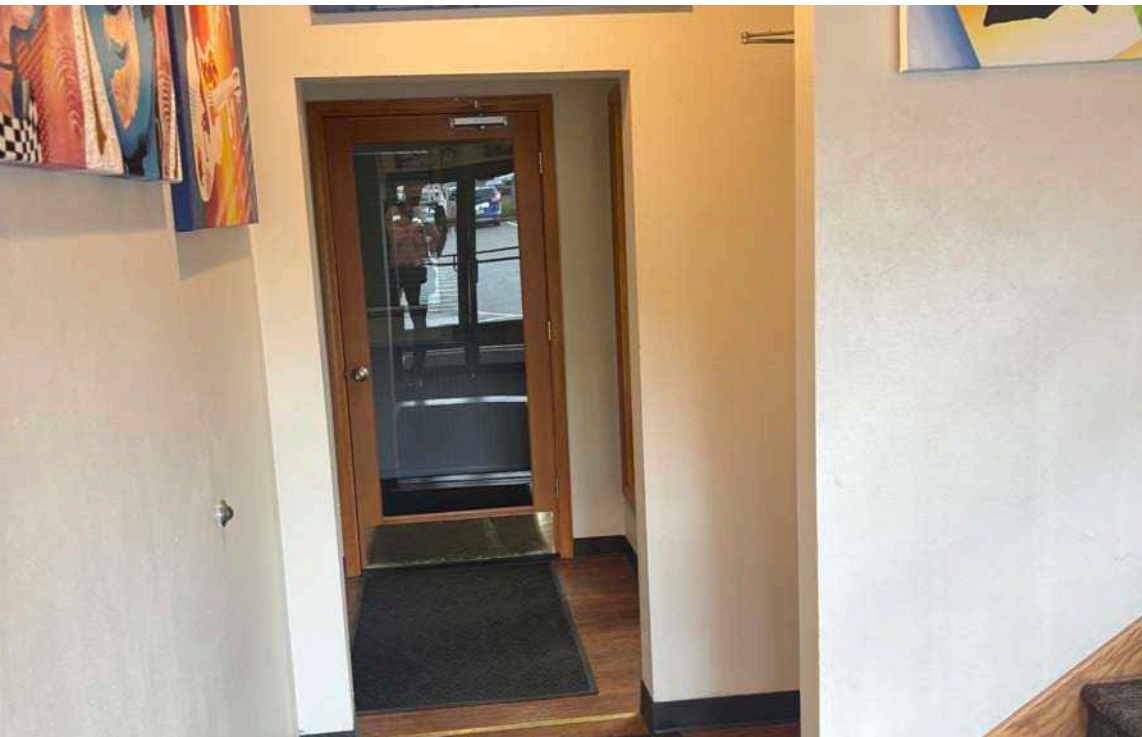
SUITE 101
1,770 SF

FLOOR PLANS

SUITE 201

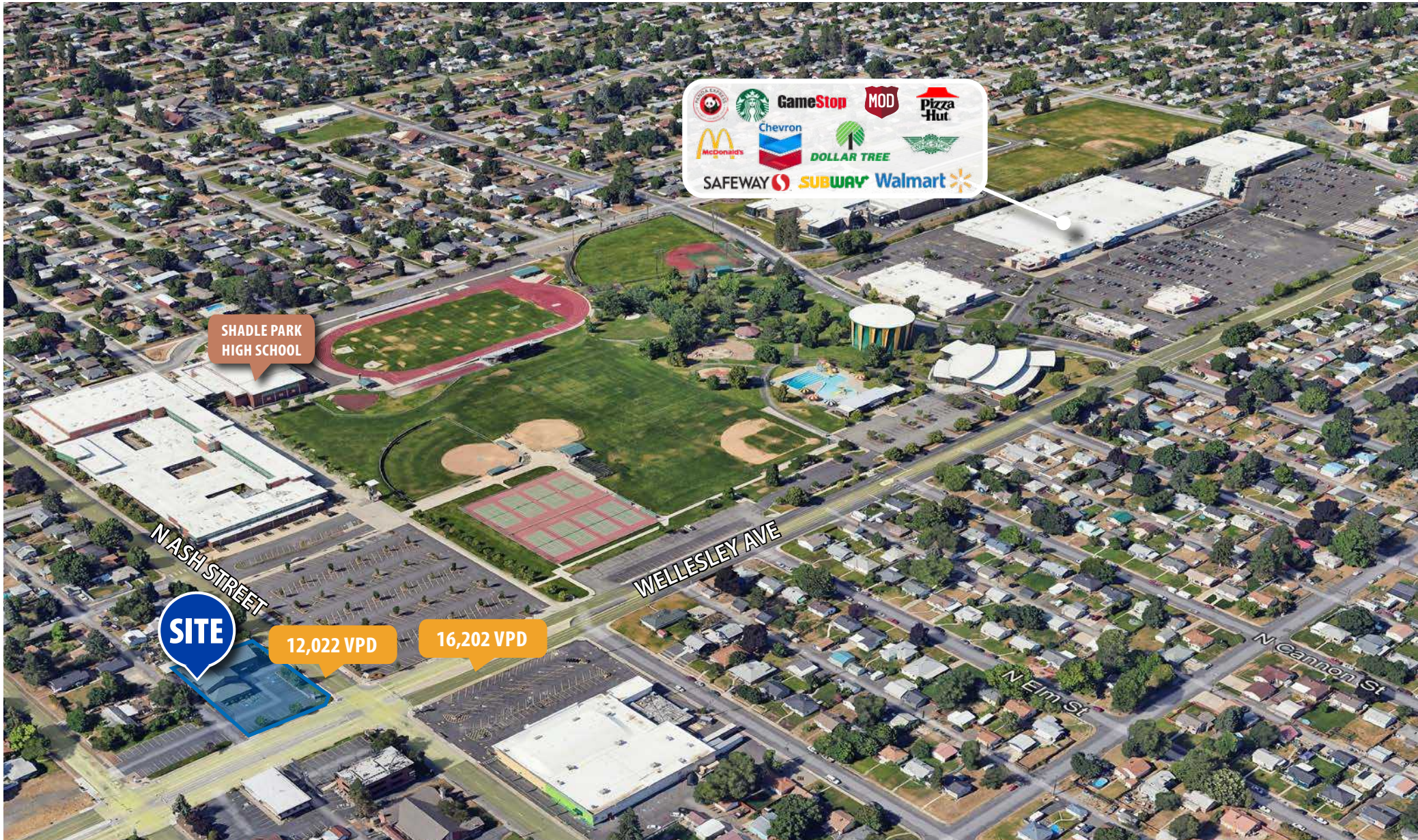


SUITE 201
+/- 600 SF

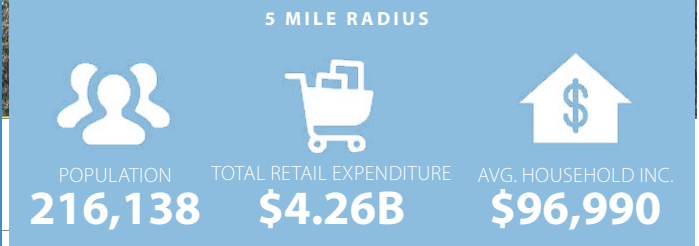
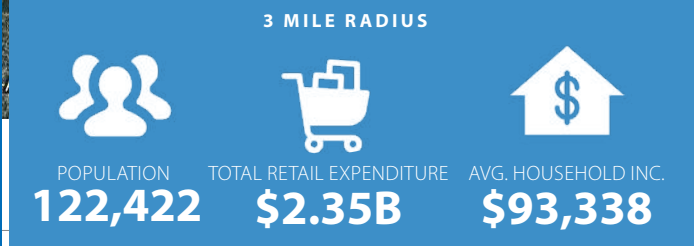


SITE MAP

EASY ACCESS OFFICE BUILDING



AERIAL MAP CLOSE TO ALL SERVICES



4610 N ASH STREET

TOXCOMMERCIAL.COM