



19220 ALDERWOOD MALL PARKWAY | LYNNWOOD, WA



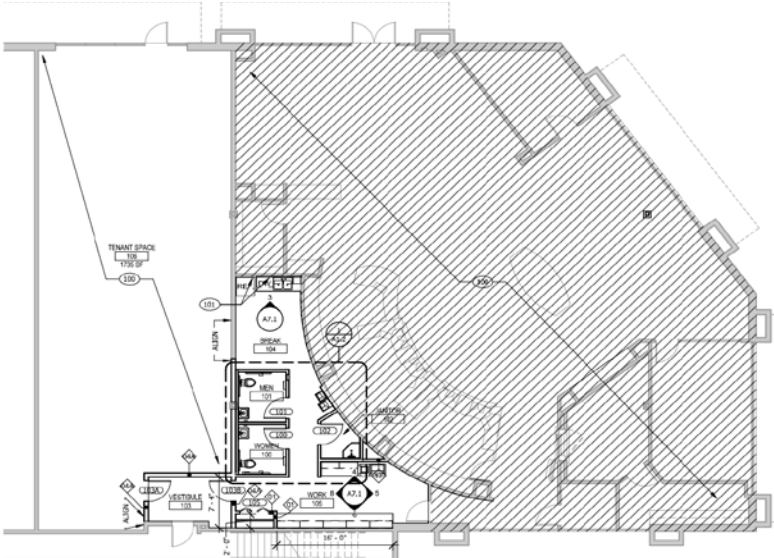
First Western Properties | 425.822.5522  
11621 97th Lane NE Kirkland, WA 98034 | fwp-inc.com

# ALDERWOOD PARKWAY END CAP | FOR LEASE

# SITE SUMMARY

Located moments from I-5 and I-405, the **Alderwood Parkway Retail Center** offers excellent visibility, strong demographics, and high traffic counts. This is a rare opportunity within a busy center that provides ample parking, including a surface-level lot and an underground parking garage.

FLOOR PLAN: 4,800 SF



SIGNAGE: 4,800 SF

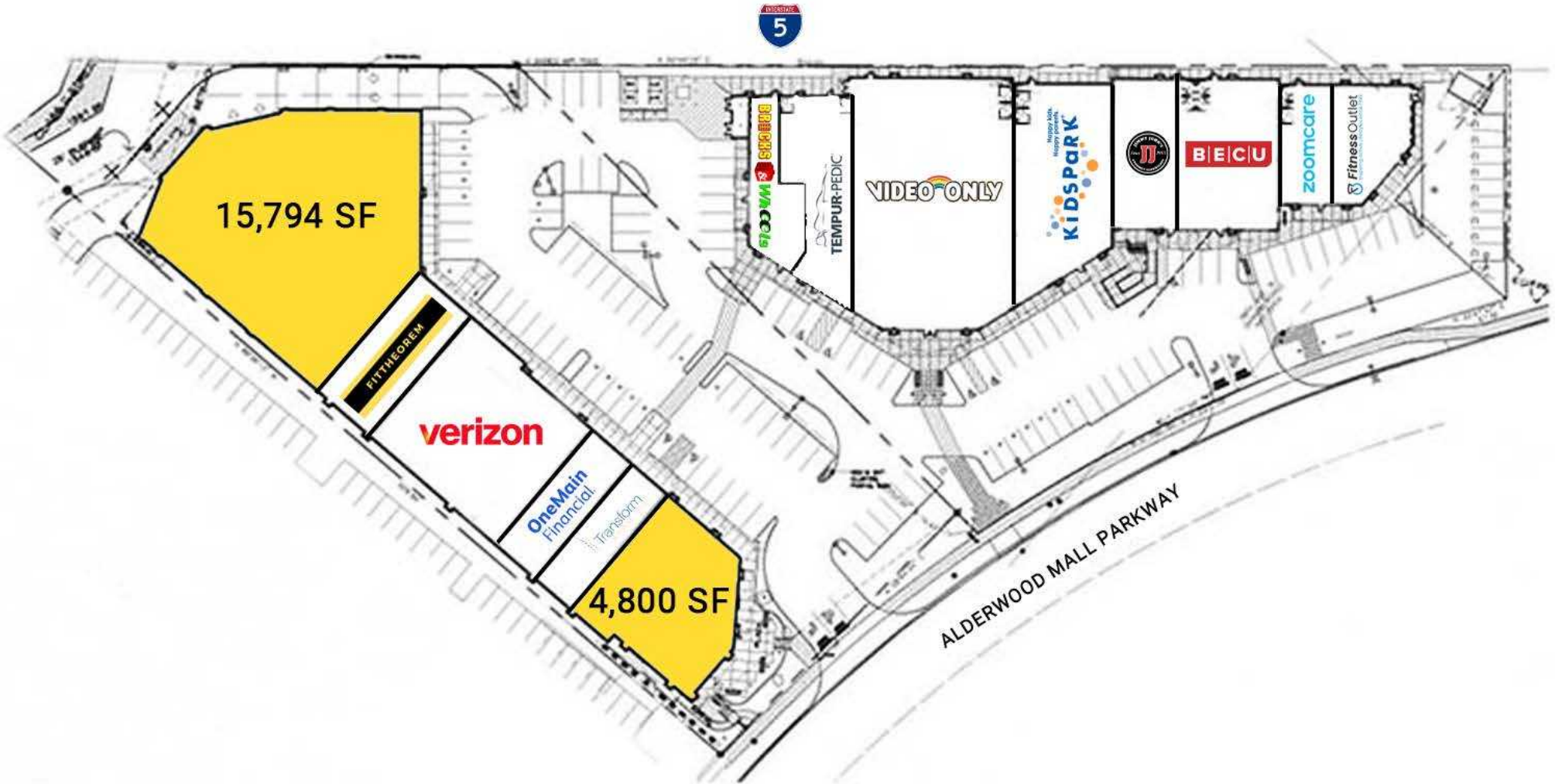


Former Bank Suite 110	Size: 4,800 SF Available: April 2026 Rate: \$40 PSF, NNN
La-Z-Boy Suite 180	Size: 15,794 SF Available: June 2026 Rate: Call for Rates
NNN's	\$5.60 PSF
Parking	Surface-level & Garage
Signage	Monument & Building

SIGNAGE: 15,794 SF

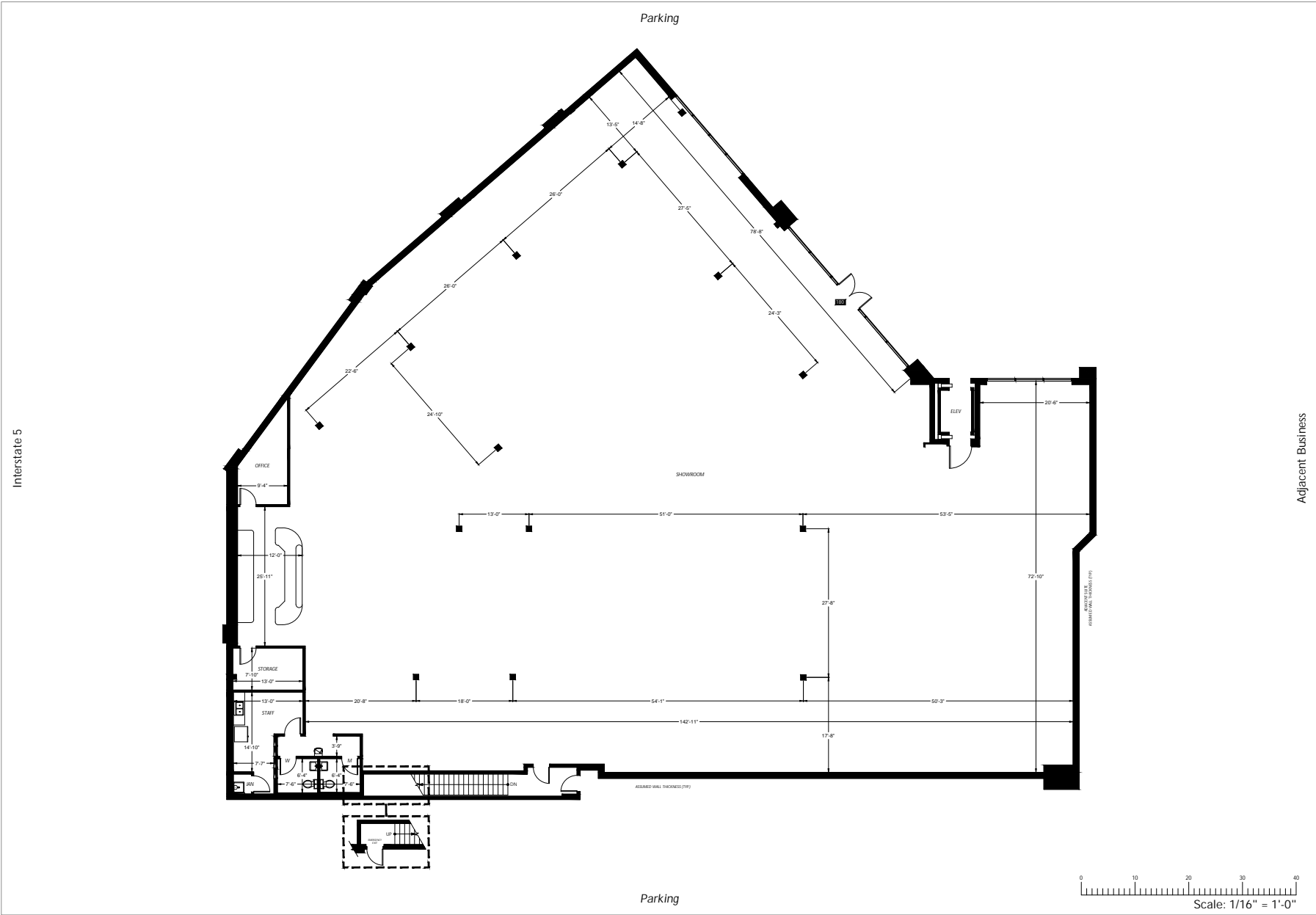


# SITE PLAN





# FLOOR PLAN - SUITE 180 - 15,794 SF



# LOCATION AERIAL







RELATIONSHIP FOCUSED. RESULTS DRIVEN.

KIRKLAND | TACOMA | PORTLAND | SEATTLE

Chandler Williams  
+1 206.518.1170  
chandler@fwp-inc.com

Jake Thurber  
+1 425.250.3277  
jthurber@fwp-inc.com

First Western Properties | 425.822.5522 | 11621 97th Lane NE Kirkland, WA 98034 | fwp-inc.com