



19220 ALDERWOOD MALL PARKWAY | LYNNWOOD, WA



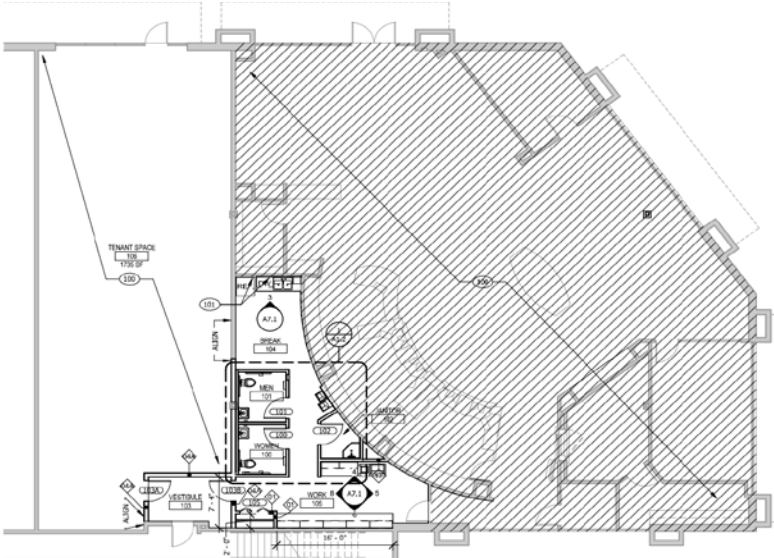
First Western Properties | 425.822.5522
11621 97th Lane NE Kirkland, WA 98034 | fwp-inc.com

ALDERWOOD PARKWAY END CAP | FOR LEASE

SITE SUMMARY

Located moments from I-5 and I-405, the **Alderwood Parkway Retail Center** offers excellent visibility, strong demographics, and high traffic counts. This is a rare opportunity within a busy center that provides ample parking, including a surface-level lot and an underground parking garage.

FLOOR PLAN: 4,800 SF



SIGNAGE: 4,800 SF

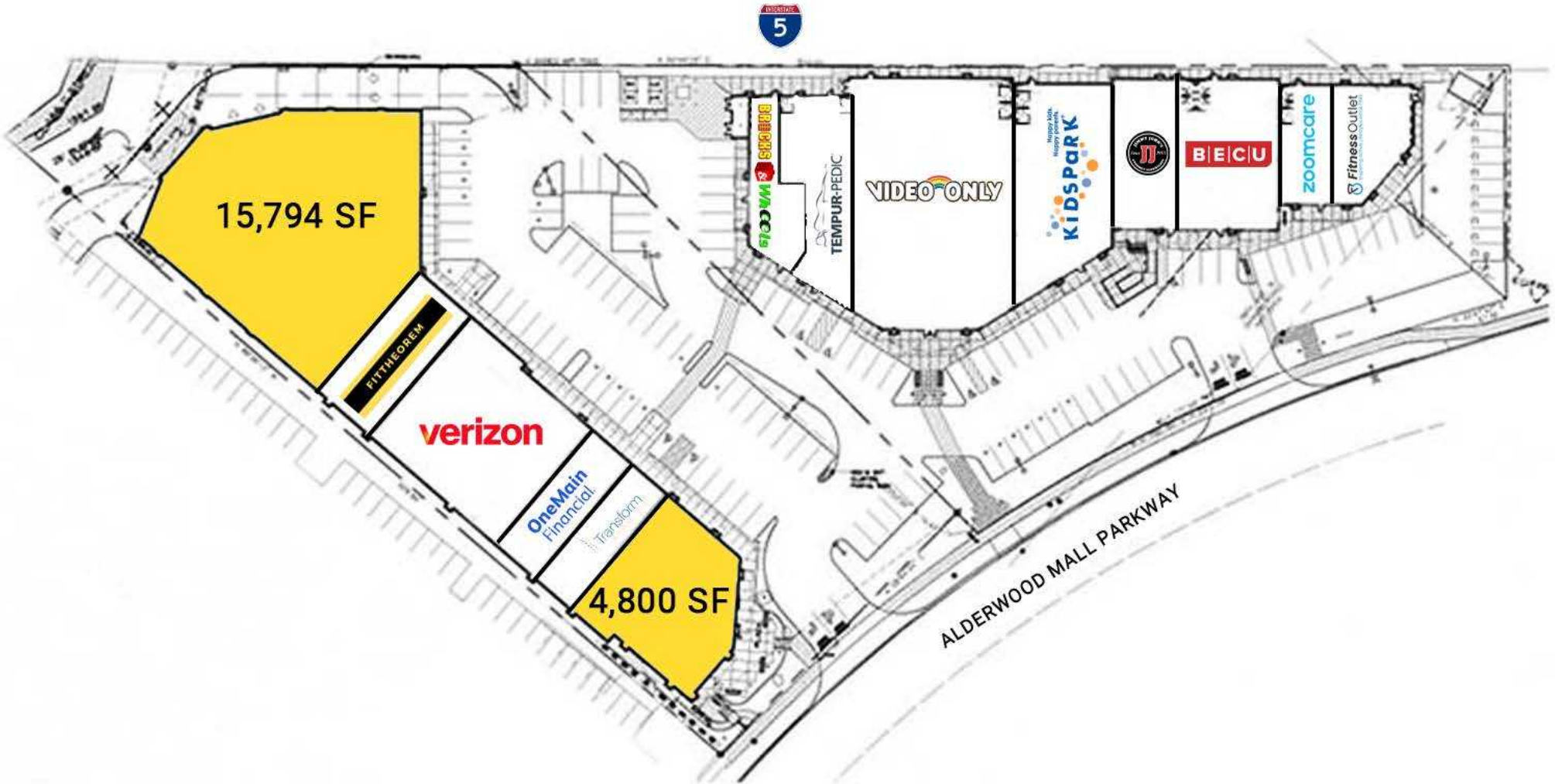


Former Bank Suite 110	Size: 4,800 SF Available: April 2026 Rate: \$40 PSF, NNN
La-Z-Boy Suite 180	Size: 15,794 SF Available: June 2026 Rate: Call for Rates
NNN's	\$5.60 PSF
Parking	Surface-level & Garage
Signage	Monument & Building

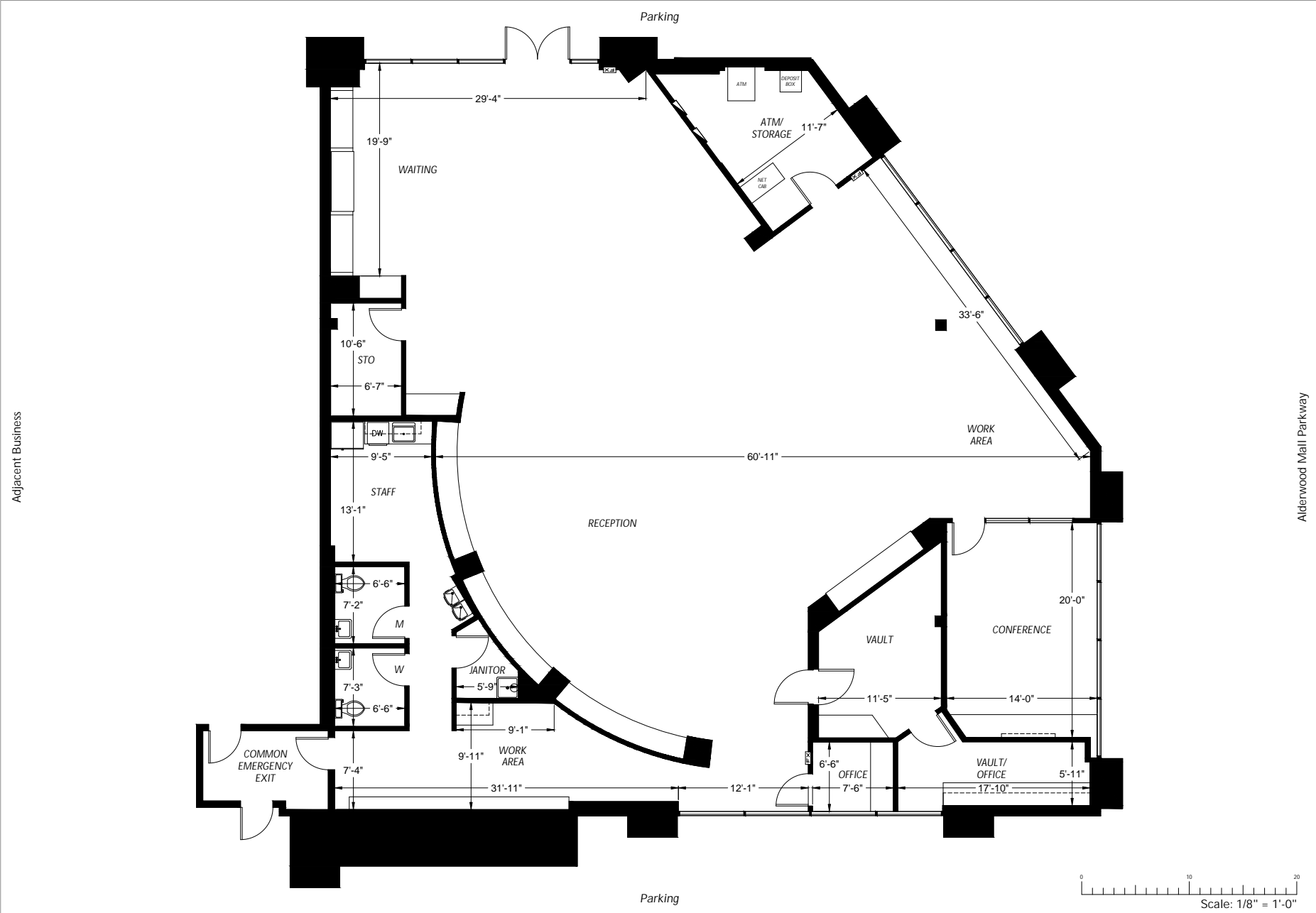
SIGNAGE: 15,794 SF



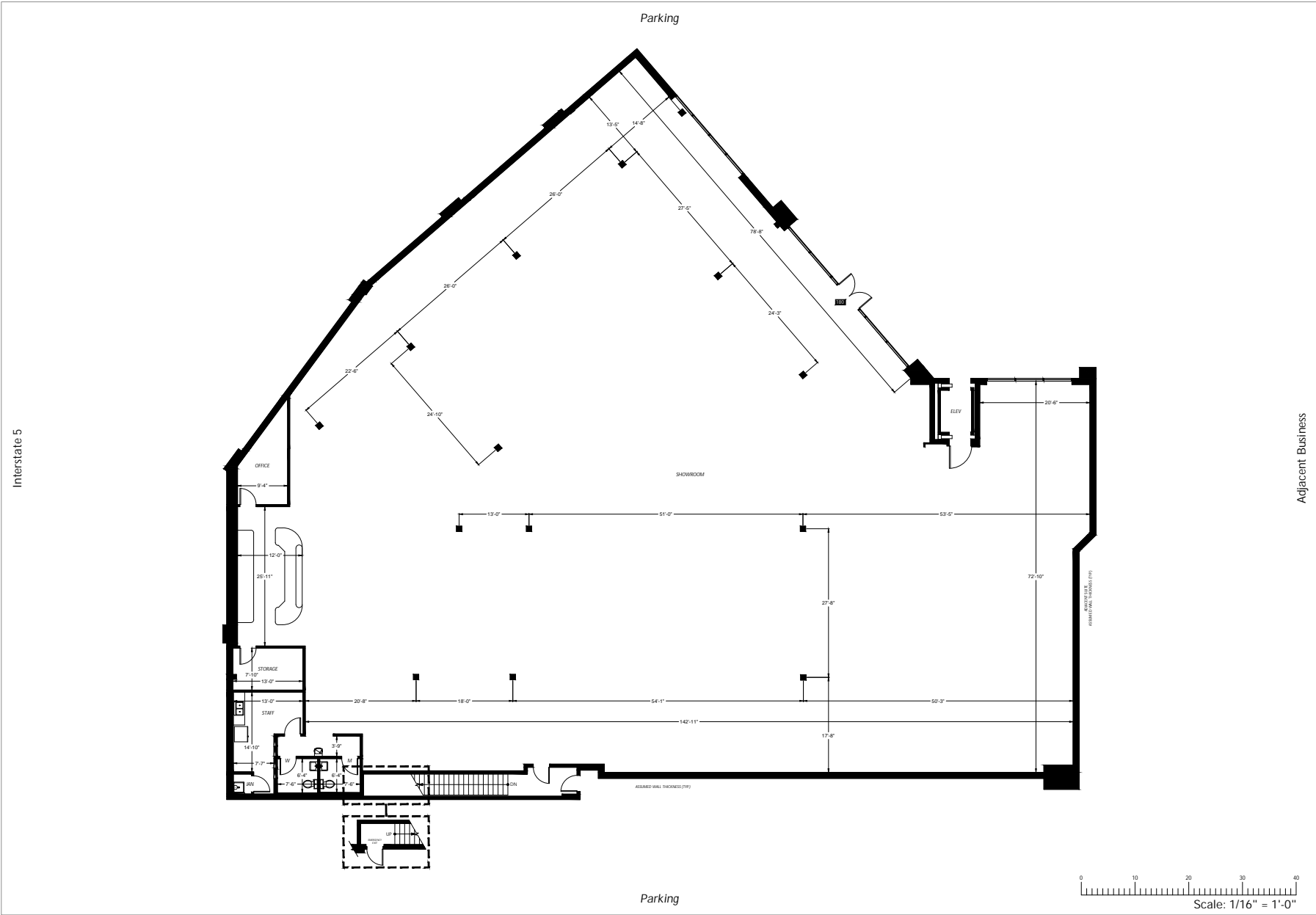
SITE PLAN



FLOOR PLAN - SUITE 110 - 4,800 SF



FLOOR PLAN - SUITE 180 - 15,794 SF

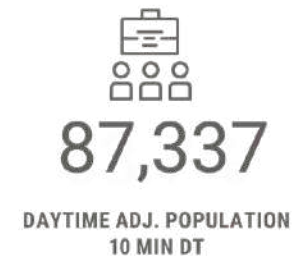
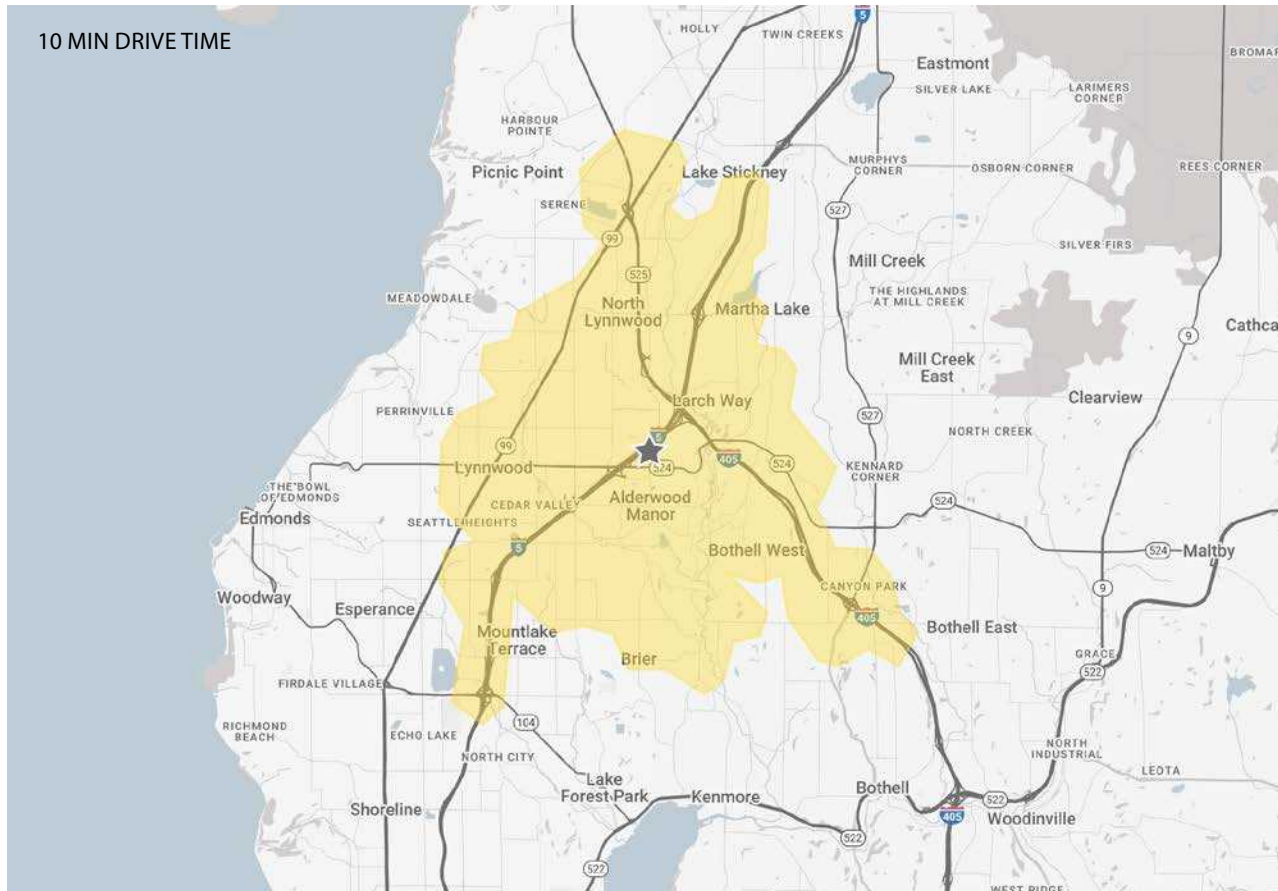


LOCATION AERIAL



DEMOGRAPHICS

Lynnwood, Washington, stands as a pivotal economic engine within Snohomish County. While it ranks as the fourth largest city by population, its strategic significance is primarily defined by its role as the region's preeminent commercial center. The economic landscape of Lynnwood is characterized by a vibrant and expansive business community. With a robust ecosystem supporting over 2,500 distinct businesses, the city generates a palpable energy. This commercial dynamism is underscored by a dramatic increase in its daytime population, which swells to over 150,000 individuals, comprising a diverse influx of dedicated workers, active consumers, and ambitious students. This substantial daily influx fuels the local economy and underscores Lynnwood's magnetic appeal as a hub for commerce and activity.





RELATIONSHIP FOCUSED. RESULTS DRIVEN.

KIRKLAND | TACOMA | PORTLAND | SEATTLE

Chandler Williams
+1 206.518.1170
chandler@fwp-inc.com

Jake Thurber
+1 425.250.3277
jthurber@fwp-inc.com

First Western Properties | 425.822.5522 | 11621 97th Lane NE Kirkland, WA 98034 | fwp-inc.com