



**FOR LEASE**

# 1516 15th Ave W

Seattle, WA

*Rare lease opportunity on a major commercial corridor with street frontage offering prime visibility and accessibility.*

## PROPERTY HIGHLIGHTS

- + New Ownership with major building improvements underway!
- + Wholesale, Retail, Industrial, Dead Storage
- + Dock high and Grade level loading
- + 12' – 14' clear height
- + Generous onsite and street parking
- + Land SF: 55,250
- + Zoning: II U/85 (Industrial Innovation)

TOTAL SF

**20,146.16 SF**

DIVISIBLE TO

**2,000 SF**

PRICE/SF

**Call for Rates**

TYPE

**NNN**

**BOB SWAIN, CCIM**  
Partner  
+1 206 794 0443  
bswain@nai-psp.com

**MATTHEW HOPKINS**  
Associate  
+1 425 586 5635  
mhopkins@nai-psp.com



THE INFORMATION CONTAINED HEREIN HAS BEEN GIVEN TO US BY THE OWNER OF THE PROPERTY OR OTHER SOURCES WE DEEM RELIABLE, WE HAVE NO REASON TO DOUBT ITS ACCURACY, BUT WE DO NOT GUARANTEE IT. ALL INFORMATION SHOULD BE VERIFIED PRIOR TO PURCHASE OR LEASE.

[nai-psp.com](http://nai-psp.com)



*Centrally located  
between Magnolia  
and Queen Anne  
with easy access to  
downtown Seattle  
and Ballard.*



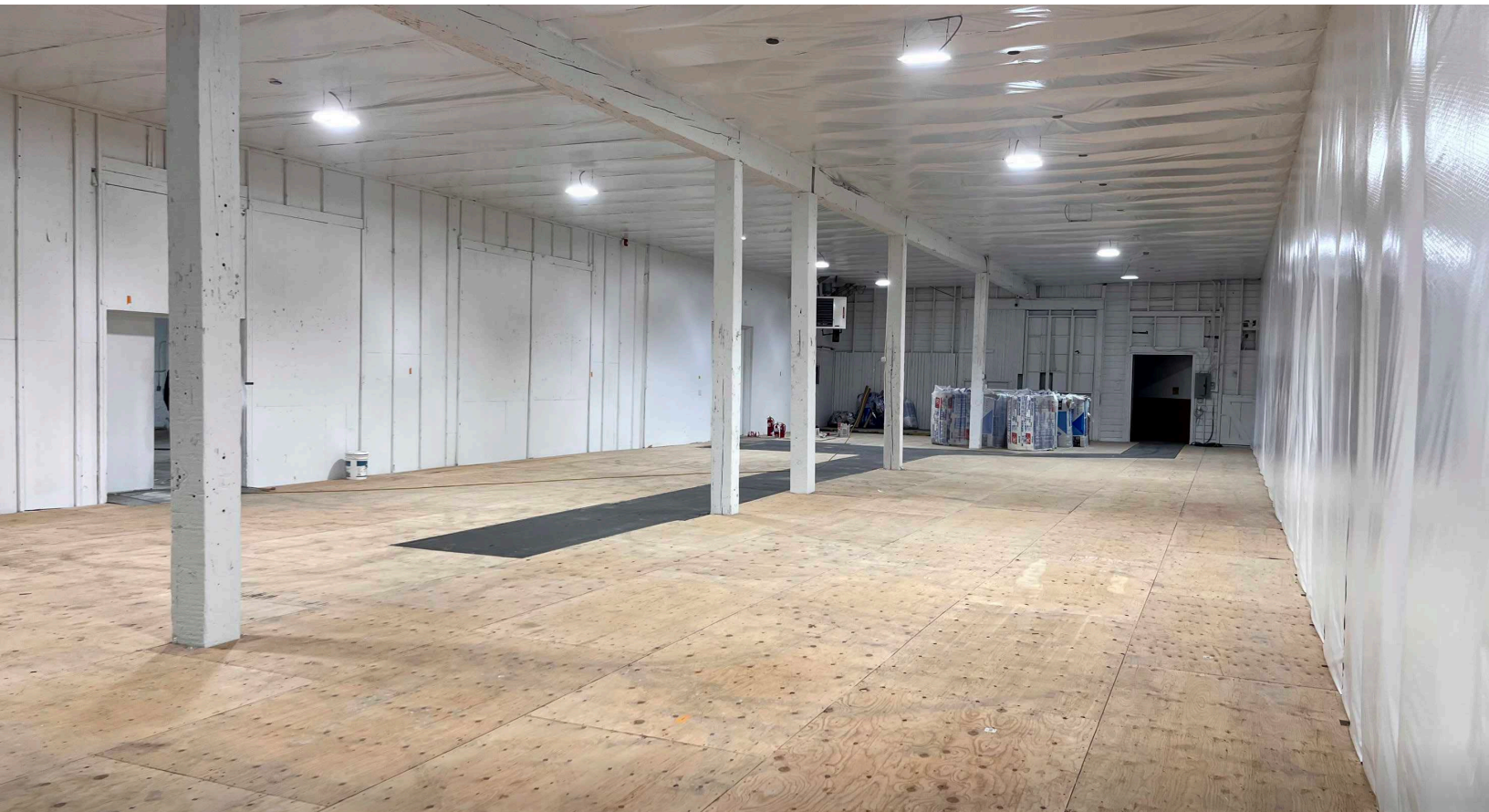
Google

**BOB SWAIN, CCIM**  
Partner  
+1 206 794 0443  
bswain@nai-psp.com

**MATTHEW HOPKINS**  
Associate  
+1 425 586 5635  
mhopkins@nai-psp.com



*Builders Hardware  
Space for lease in  
Seattle*

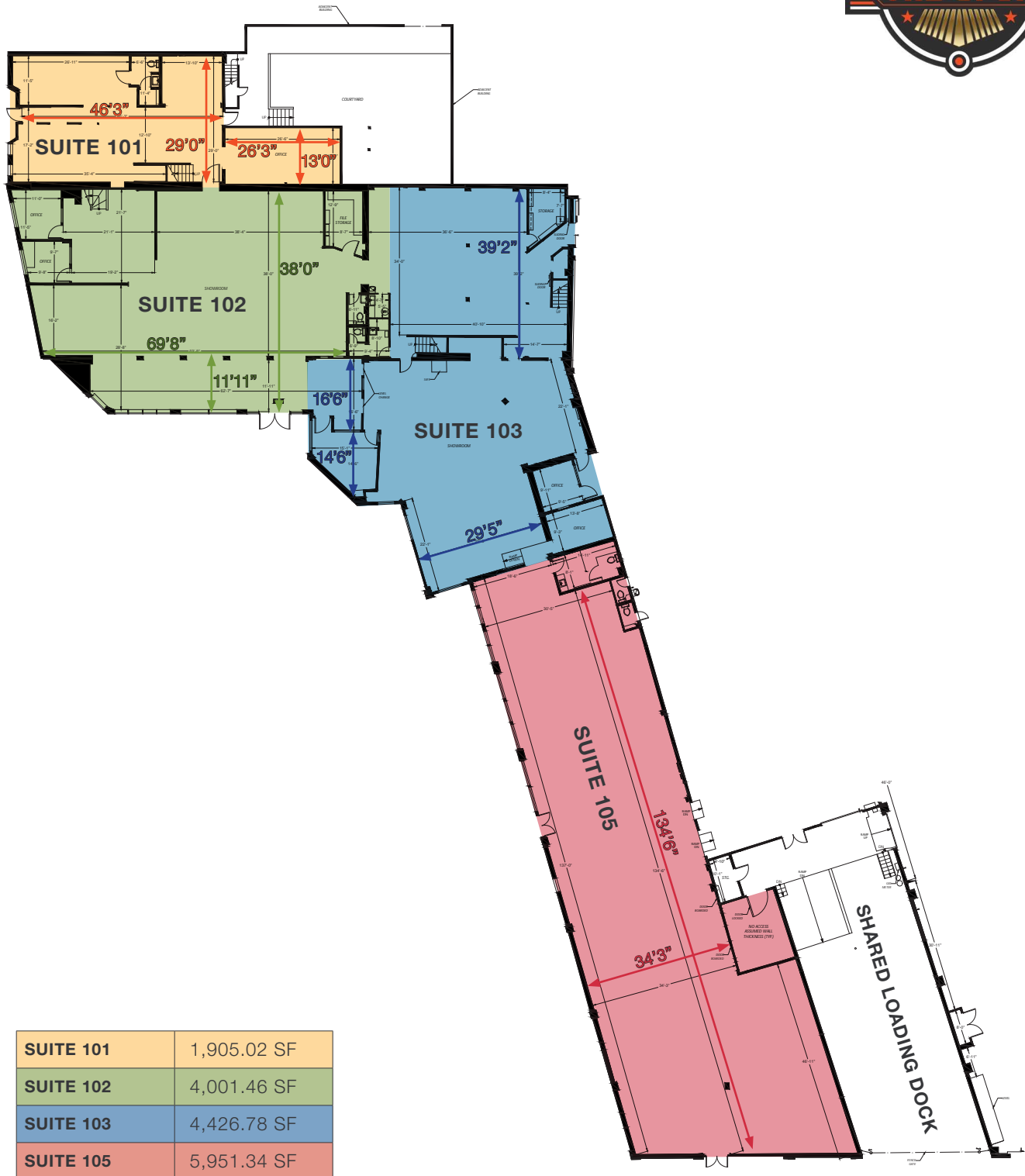


**BOB SWAIN, CCIM**  
Partner  
+1 206 794 0443  
bswain@nai-pp.com

**MATTHEW HOPKINS**  
Associate  
+1 425 586 5635  
mhopkins@nai-pp.com



# Conceptual Space Configuration



SUITE 101	1,905.02 SF
SUITE 102	4,001.46 SF
SUITE 103	4,426.78 SF
SUITE 105	5,951.34 SF

\*Grade level loading doors can be added upon request on the East, West, and South sides of the building.

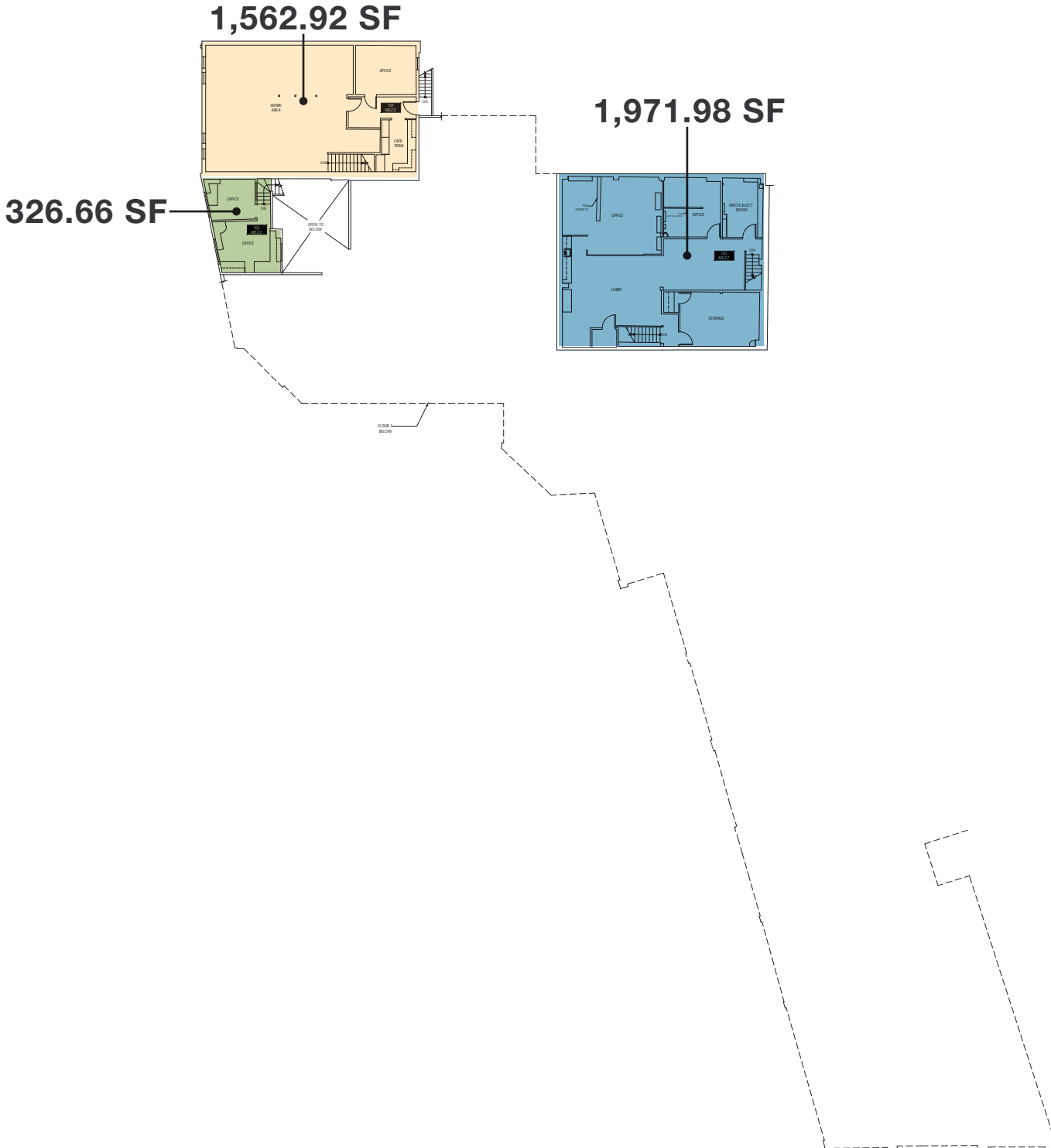
**BOB SWAIN, CCIM**  
Partner  
+1 206 794 0443  
bswain@nai-psp.com

**MATTHEW HOPKINS**  
Associate  
+1 425 586 5635  
mhopkins@nai-psp.com



# Conceptual Space Configuration

## 2ND FLOOR



**BOB SWAIN, CCIM**  
Partner  
+1 206 794 0443  
bswain@nai-psp.com

**MATTHEW HOPKINS**  
Associate  
+1 425 586 5635  
mhopkins@nai-psp.com

