

**NEW LEASE RATE**



**WESTLAKE  
ASSOCIATES**



# FOR LEASE GEORGETOWN INDUSTRIAL SPACE

**6259 AIRPORT WAY S  
SEATTLE, WA 98108**

**TYLER LITTLE**

BROKER

**P 206.428.9902**

[tyler.little@westlakeassociates.com](mailto:tyler.little@westlakeassociates.com)

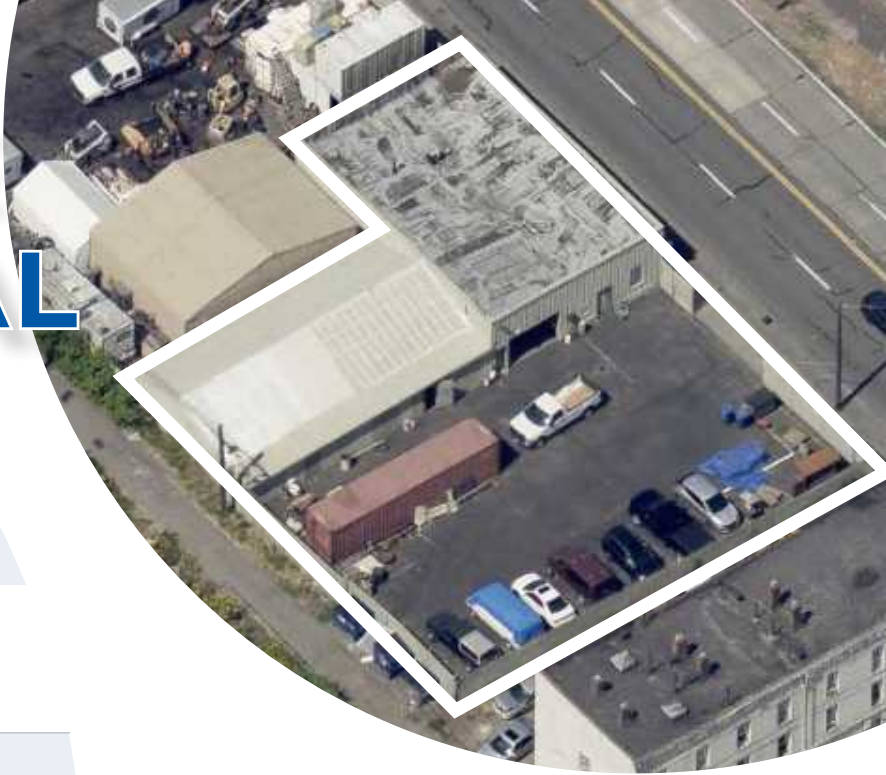
**MATTHEW LITTLE**

PRINCIPAL | MANAGING BROKER

**P 206.505.9422**

[little@westlakeassociates.com](mailto:little@westlakeassociates.com)

# FOR LEASE INDUSTRIAL



**6259 AIRPORT WAY S**  
SEATTLE, WA 98108

AVAILABLE 4,185 SF + Yard

NEW LEASE RATE **\$5,385 / Mo + NNN**

COST PER FOOT **\$1.28 / SF**

LEASE TERM **Negotiable**



## SPACE HIGHLIGHTS

- **4,185 SF** Commercial Building includes:
  - + **1,140 SF** - Office
  - + **3,045 SF** - Warehouse
- Northend of Boeing Field
- Large Paved and Fenced 4,000 SF Yard
- Parking for up to 20 Vehicles
- City of Seattle Zoning C2-55(M)
- Air-Conditioned Office
- Three-Phase & Single-Phase Power
- 10x10 Roll-Up Door
- 10 Ft. Ceilings
- Working Air Compressor & Some Equipment Available
- 40 Ft. x 8 Ft. Container Available
- Highly Visible to Passing Cars - Vehicle Count Per Day: 21,071 Cars
- Ideal for Manufacturing, Previous Tenant Worked in Metal Solutions
- Excellent Access to I-5

**MATTHEW LITTLE**  
PRINCIPAL | MANAGING BROKER  
P 206.505.9422  
little@westlakeassociates.com

**TYLER LITTLE**  
BROKER  
P 206.428.9902  
tyler.little@westlakeassociates.com



# FOR LEASE INDUSTRIAL



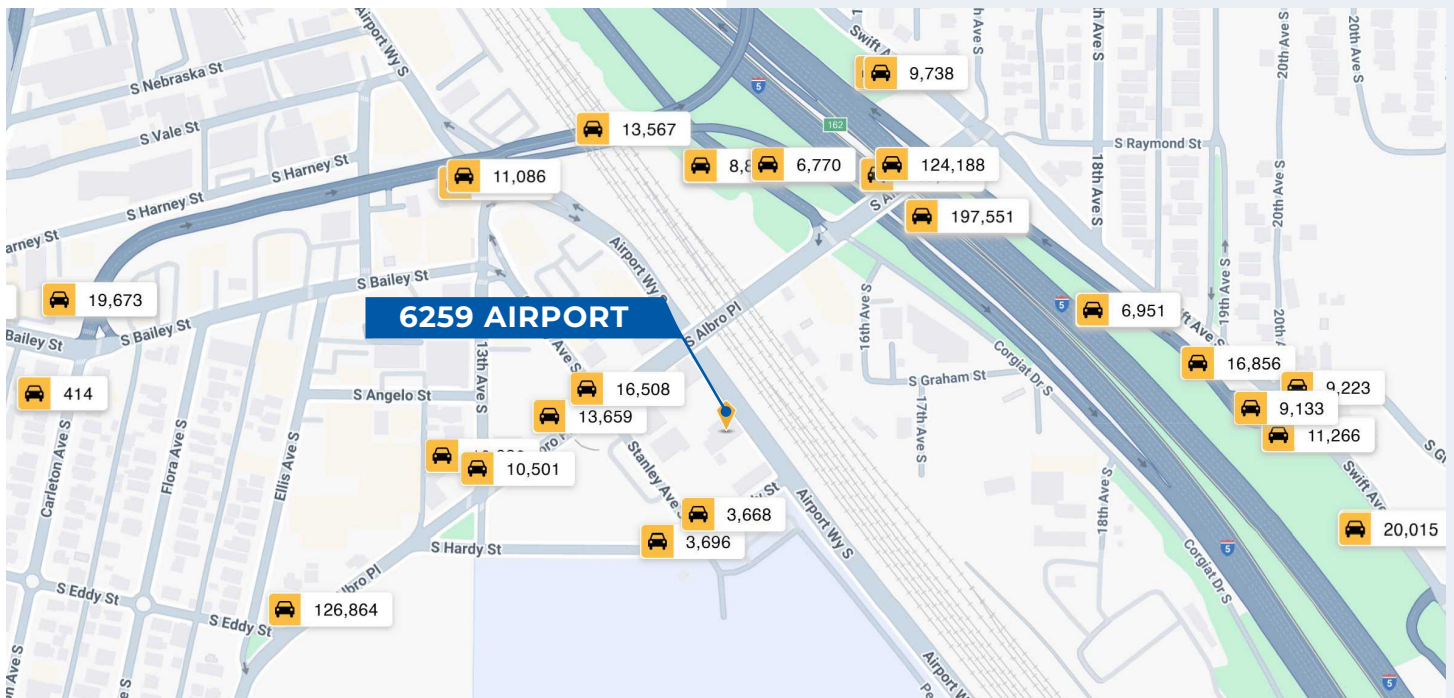
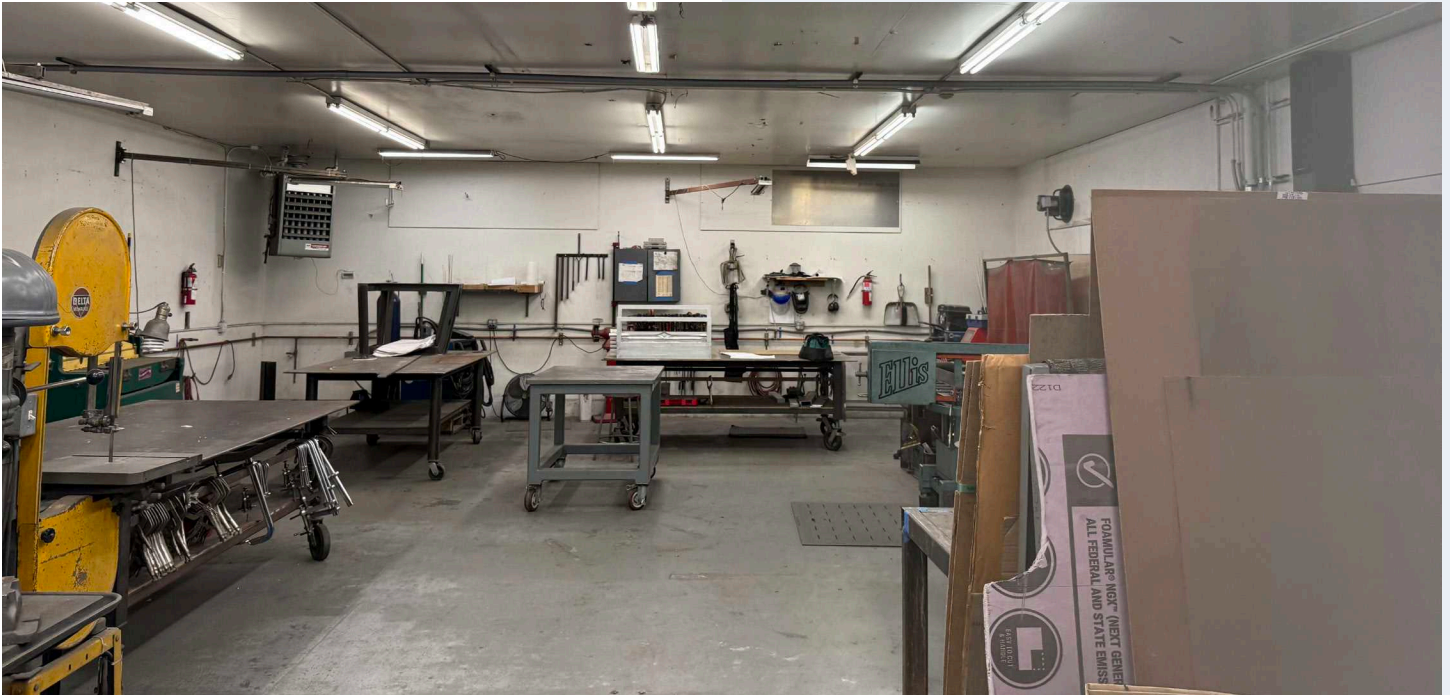
**MATTHEW LITTLE**  
PRINCIPAL | MANAGING BROKER  
P 206.505.9422  
[little@westlakeassociates.com](mailto:little@westlakeassociates.com)

**TYLER LITTLE**  
BROKER  
P 206.428.9902  
[tyler.little@westlakeassociates.com](mailto:tyler.little@westlakeassociates.com)



# FOR LEASE

# INDUSTRIAL

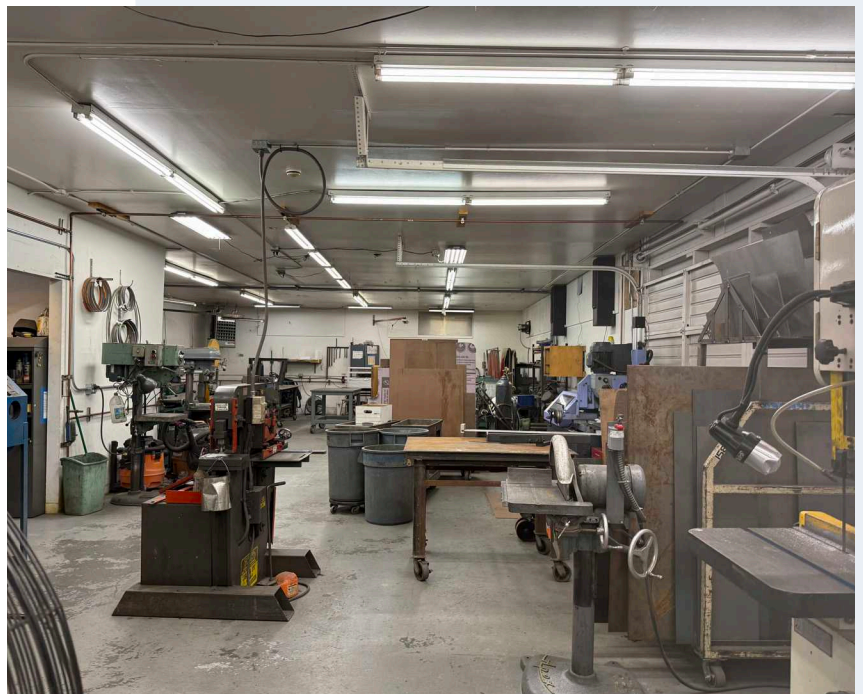
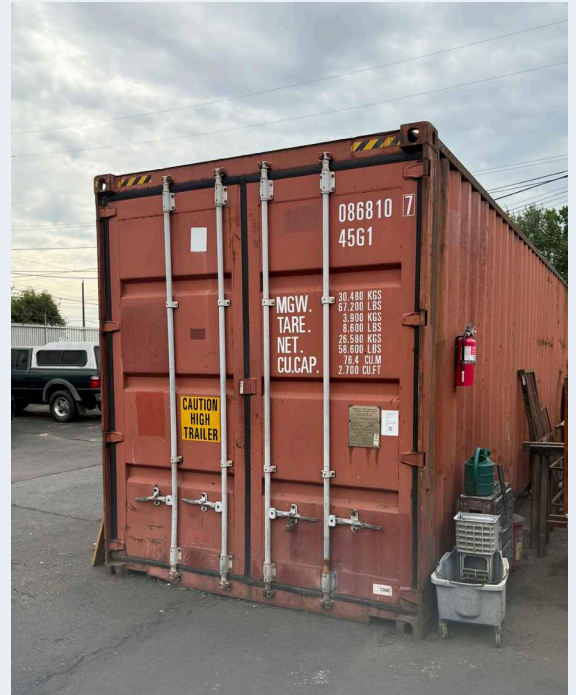
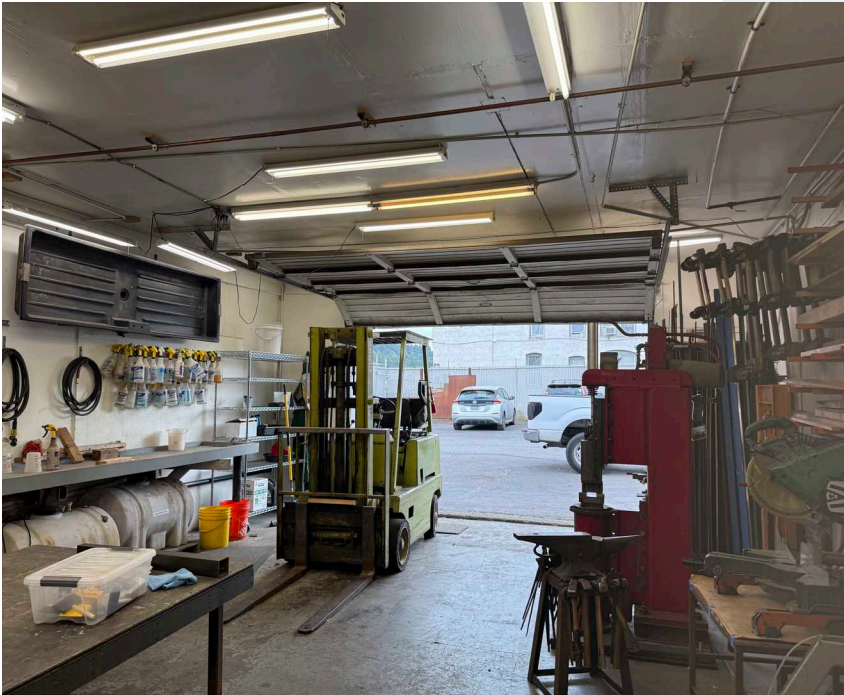


**MATTHEW LITTLE**  
 PRINCIPAL | MANAGING BROKER  
 P 206.505.9422  
[little@westlakeassociates.com](mailto:little@westlakeassociates.com)

**TYLER LITTLE**  
 BROKER  
 P 206.428.9902  
[tyler.little@westlakeassociates.com](mailto:tyler.little@westlakeassociates.com)



# FOR LEASE INDUSTRIAL



**MATTHEW LITTLE**  
PRINCIPAL | MANAGING BROKER  
P 206.505.9422  
[little@westlakeassociates.com](mailto:little@westlakeassociates.com)

**TYLER LITTLE**  
BROKER  
P 206.428.9902  
[tyler.little@westlakeassociates.com](mailto:tyler.little@westlakeassociates.com)



**Since 1975, Westlake Associates, Inc. has been the premier provider of commercial real estate brokerage services in the Puget Sound Region.**



Our unsurpassed commitment to creating and preserving our clients' real estate investment wealth has resulted in thousands of successful transactions and a long history of repeat business and client referrals. Westlake currently has 25 brokers.

The professionals at Westlake Associates collaboratively work with clients to develop customized, creative solutions designed to maximize investment returns.

We've built a strong foundation of experience in Investment Property Sales, Commercial Leasing, Property Management, and comprehensive real estate services over our 50-year history. We operate as a team and leverage each other's resources and experience to provide the highest level of client services.

**PROUD MEMBERS OF:**

- + **COMMERCIAL BROKERS ASSOCIATION (CBA)**
- + **NORTHWEST MULTIPLE LISTING SERVICES (NWMLS)**
- + **LOOPNET NATIONAL LISTING SERVICES**
- + **COSTAR COMMERCIAL REAL ESTATE DATA & NATIONAL LISTING**
- + **COMMERCIAL REAL ESTATE EXCHANGE, INC. (CREXI)**
- + **WASHINGTON STATE REALTORS ASSOCIATION (WSMA)**

**EXCLUSIVELY LISTED BY:**

**MATTHEW LITTLE**

PRINCIPAL | MANAGING BROKER

**P 206.505.9422**

[little@westlakeassociates.com](mailto:little@westlakeassociates.com)

**TYLER LITTLE**

BROKER

**P 206.428.9902**

[tyler.little@westlakeassociates.com](mailto:tyler.little@westlakeassociates.com)

1200 WESTLAKE AVENUE N, SUITE 310  
SEATTLE, WASHINGTON 98109

©2025 WESTLAKE ASSOCIATES, INC.

DISCLAIMER: This information has been secured from sources we believe to be reliable, but we make no representations or warranties, expressed or implied, as to the accuracy of the information. References to square footage, age, and numbers are approximate. Parties must verify the information and bear all risk for any inaccuracies.