



FOR LEASE

Everett Contractor Bldg

2328 103rd St SW, Everett, WA

Prime Everett contractor building for lease with convenient access to highways.

PROPERTY HIGHLIGHTS

- + Available within 30 days
- + 3,400 SF (1,572 SF warehouse; 400 SF office)
- + 3 Oversized Grade Level Doors
- + 2 restrooms
- + 3 Dedicated parking spots along with abundant street parking
- + New Construction—Property Built in 2022
- + LI1 Zoning - Light Industrial 1 zone accommodates a range of uses including industrial and manufacturing
- + Less than a mile away from Paine Field Airport and 5 minutes to nearest freeway entrance to SR 526 and I-5

VIRTUAL TOUR 

TOTAL SF

3,400 SF

LEASE RATE

Call Brokers



ALLY BRADEN

Associate
+1 425 586 5649
abraden@nai-psp.com

HANS SWENSON

Partner
+1 425 586 5630
hswenson@nai-psp.com

TAMIR OHAYON

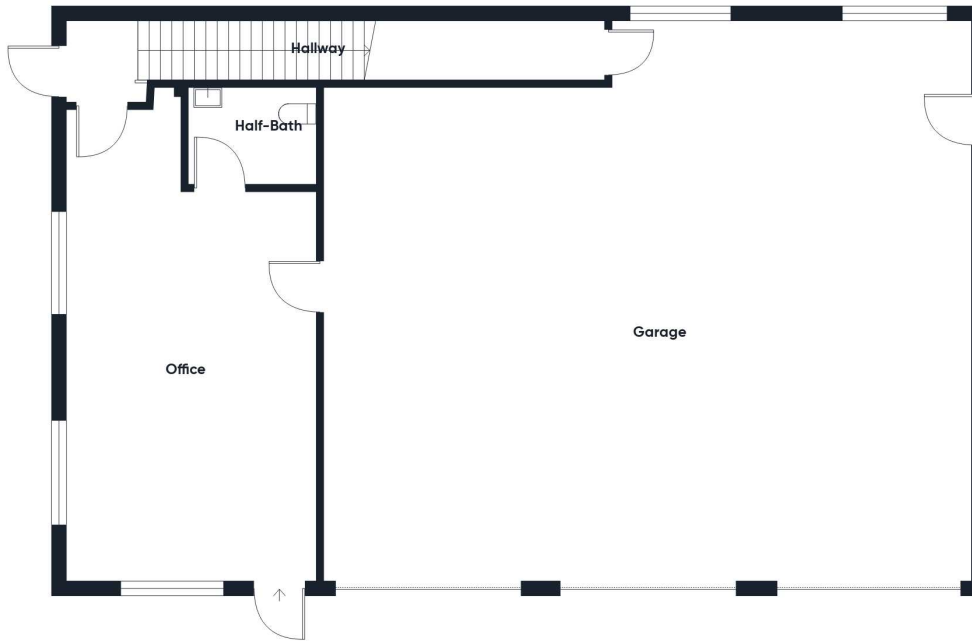
Partner
+1 425 586 5627
tohayon@nai-psp.com



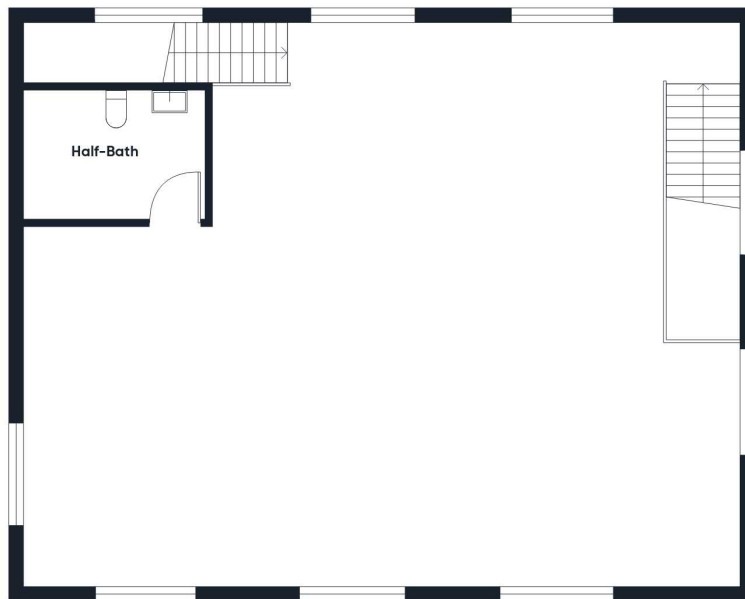
THE INFORMATION CONTAINED HEREIN HAS BEEN GIVEN TO US BY THE OWNER OF THE PROPERTY OR OTHER SOURCES WE DEEM RELIABLE, WE HAVE NO REASON TO DOUBT ITS ACCURACY, BUT WE DO NOT GUARANTEE IT. ALL INFORMATION SHOULD BE VERIFIED PRIOR TO PURCHASE OR LEASE.

nai-psp.com

Floor Plan



Floor 0



Floor 1

**Measurements are approximate and not to scale. This floor plan is intended for illustration only.*

ALLY BRADEN

Associate
+1 425 586 5649
abraden@nai-ppsp.com

HANS SWENSON

Partner
+1 425 586 5630
hswenson@nai-ppsp.com

TAMIR OHAYON

Partner
+1 425 586 5627
tohayon@nai-ppsp.com



Aerial Overview



ALLY BRADEN
Associate
+1 425 586 5649
abraden@nai-psp.com

HANS SWENSON
Partner
+1 425 586 5630
hswenson@nai-psp.com

TAMIR OHAYON
Partner
+1 425 586 5627
tohayon@nai-psp.com

