

# PROFESSIONAL MEDICAL OFFICE SUITE



16410 Smokey Point Blvd, Smokey Point, WA

Pete Wasley, Property Asset Manager

(360) 739-7898 | [Pete@PCRNw.com](mailto:Pete@PCRNw.com)



# OVERVIEW



Suite 306: 1,191 SF

Base Rent: \$30.00 SF/Y

Est. NNN: \$11.33 SF/Y

Base Rent + Est. NNN = \$4,102 Per Month

CBA #: 42733567

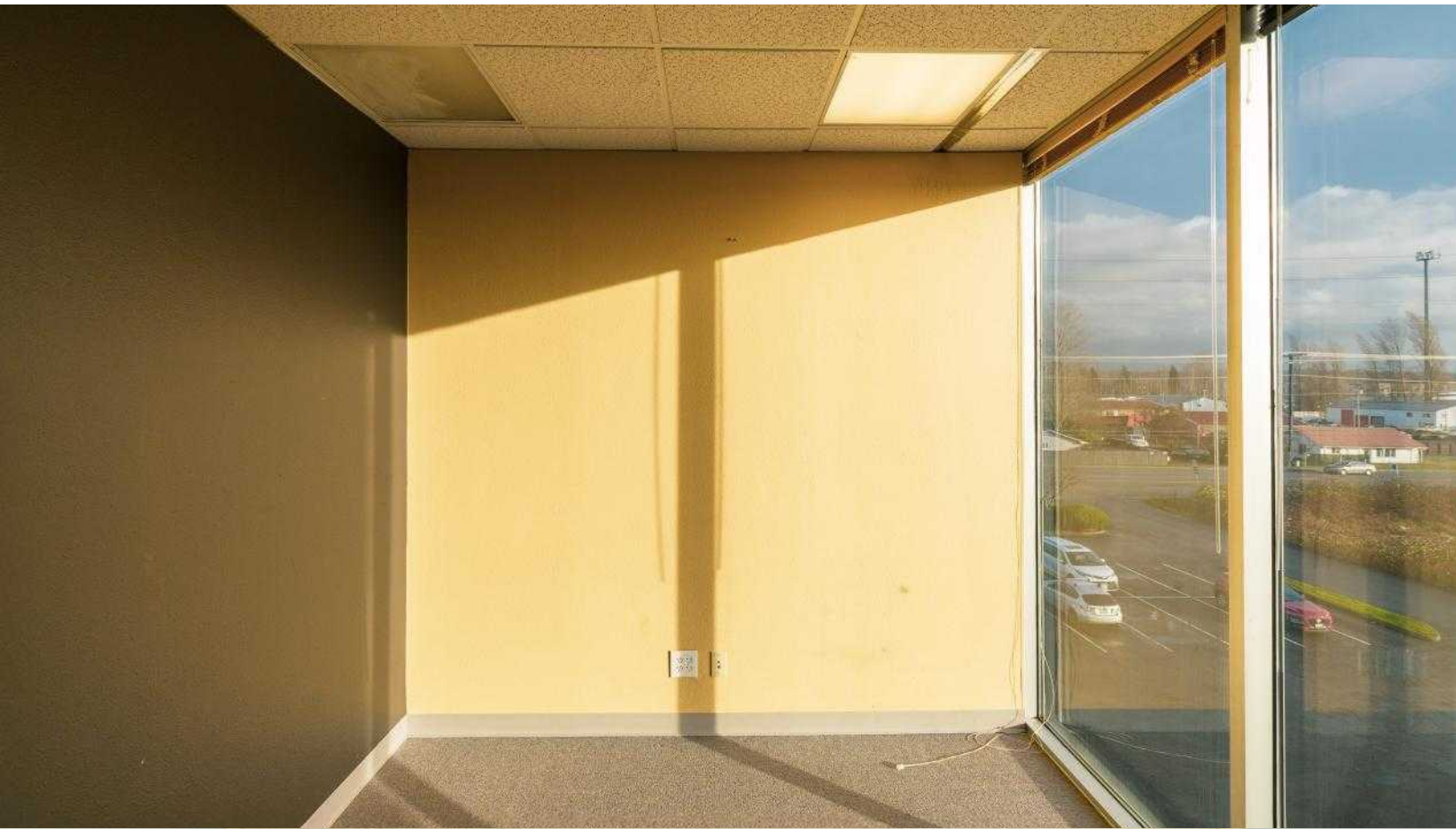
This spacious 1,191-square-foot corner suite is located on the second floor of a well-maintained medical and professional office building. Offering excellent visibility from I-5 and conveniently situated just off Smokey Point Boulevard, this suite provides both high exposure and easy accessibility. The building features abundant on-site parking for staff and visitors, making it an ideal location for medical practitioners, wellness services, or other professional office users.

# PHOTOS



*Information contained herein has been obtained from sources that we deem reliable. We have no reason to doubt its accuracy, but we do not guarantee it.*

# PHOTOS



*Information contained herein has been obtained from sources that we deem reliable. We have no reason to doubt its accuracy, but we do not guarantee it.*

# LOCATION



Everett, WA

22 minutes

14.5 miles

Marysville, WA

12 minutes

7 miles

I-5 Exits 206

4 minutes

0.7 miles



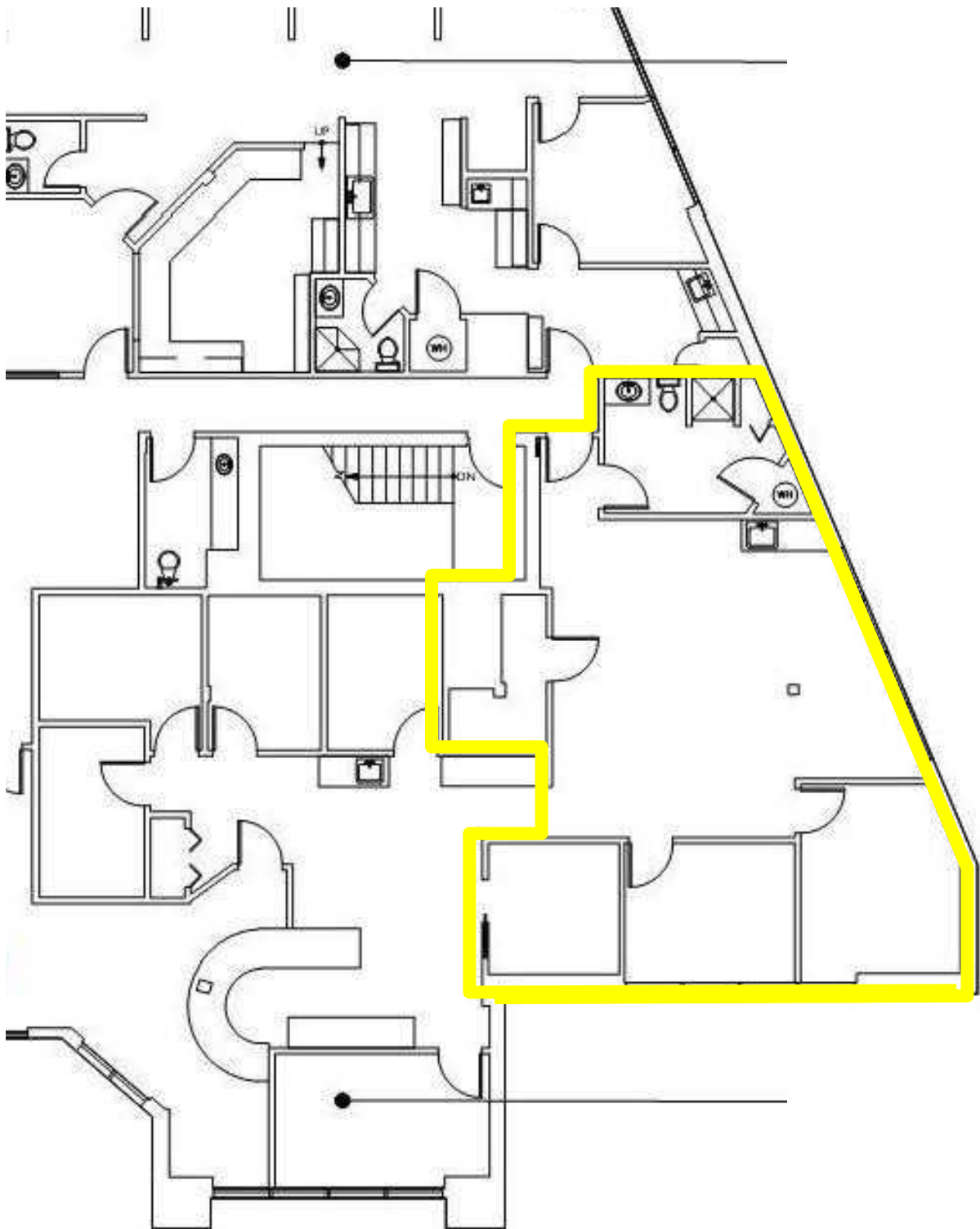
I-5 Freeway

Smokey Point Blvd

*Information contained herein has been obtained from sources that we deem reliable. We have no reason to doubt its accuracy, but we do not guarantee it.*

# FLOOR PLAN

- Prominent Medical/Professional office Building
- Updated and well apportioned Lobbies and Common Areas
- Easy Access from Smokey Point Blvd
- 118 shared parking spaces on property
- Outstanding visibility from I-5 w/ 100,000+ daily traffic counts



*Information contained herein has been obtained from sources that we deem reliable. We have no reason to doubt its accuracy, but we do not guarantee it.*