

JONESCO

BUSINESS CENTER

8722 - 8920 122nd Ave NE | Kirkland, WA



BUILDING FEATURES



**NEARBY RESTAURANTS AND
VARIOUS RETAIL AMENITIES**



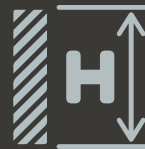
**GRADE-LEVEL
LOADING**



**EXCELLENT ACCESS TO
FREEWAY AND BUS ROUTES**



**ABUNDANT
PARKING**



**13' - 15'
CLEAR HEIGHT**

For more information or to schedule a tour, please contact:

BRODERICK
• GROUP •

JEFF LIVINGSTON
425.274.4288
livingston@broderickgroup.com

RAWLEY HOLMBERG
425.274.4284
holmberg@broderickgroup.com

SAMSON TORO
425.274.4289
toro@broderickgroup.com

JONESCO

BUSINESS CENTER

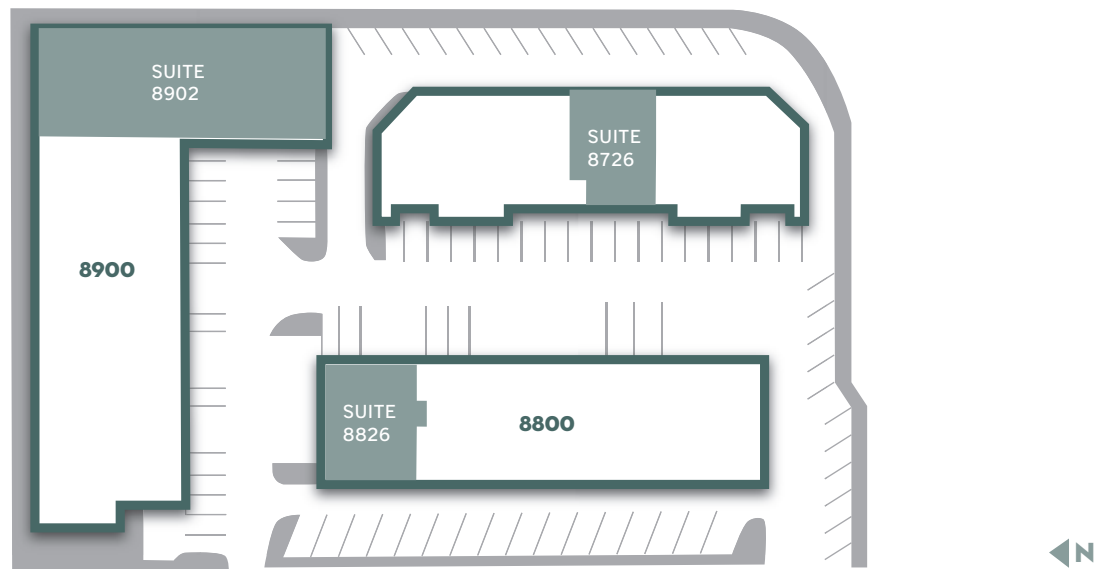
8722 - 8920 122nd Ave NE | Kirkland, WA

AVAILABILITY

BUILDING / SUITE	AVAILABLE SPACE	AVAILABLE DATE	LEASE RATE (ANNUAL PSF)	NNN EXPENSES (2026 EST.)
FLEX AVAILABILITIES				
<u>8726</u>	1,559 SF	June 1, 2026	\$26.00	\$7.08
<u>8826</u>	2,279 SF	Now	\$26.00	\$7.08
<u>8902</u>	6,588 SF	August 1, 2026	\$26.00	\$7.08

The information contained herein has been given to us by the owner or sources that we deem reliable. We have no reason to doubt its accuracy, but we do not guarantee it. Prospective tenants should carefully verify all information contained herein.

SITE MAP



122ND AVE NE



For more information or to schedule a tour, please contact:

JEFF LIVINGSTON
425.274.4288
livingston@broderickgroup.com

RAWLEY HOLMBERG
425.274.4284
holmberg@broderickgroup.com

SAMSON TORO
425.274.4289
toro@broderickgroup.com

JONESCO

BUSINESS CENTER

8722 - 8920 122nd Ave NE | Kirkland, WA

BLDG. 8700 / FL. 1



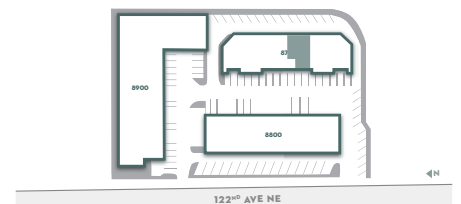
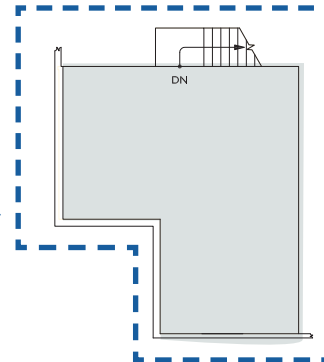
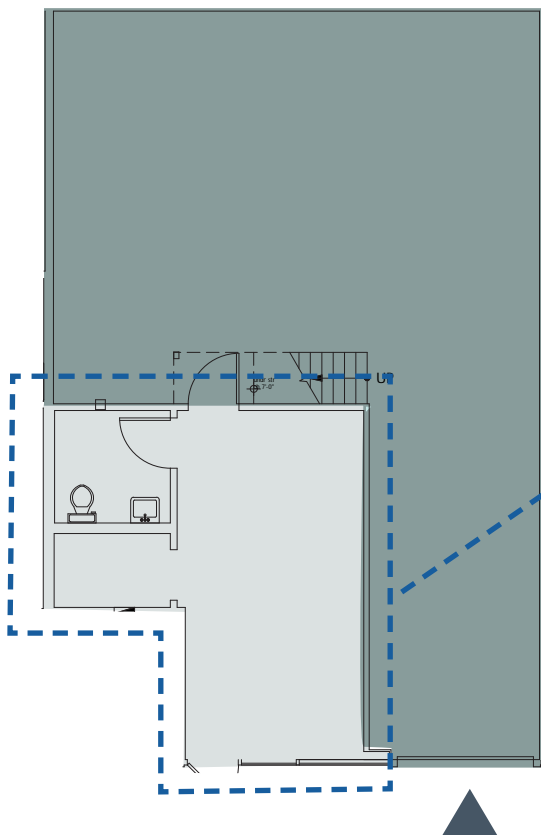
SUITE 8726

1,559 RSF

AVAILABLE JUNE 1, 2026

GROUND FLOOR

MEZZANINE



WAREHOUSE

OFFICE

GRADE LEVEL DOOR

DOCK-HIGH DOOR



 [BACK TO AVAILABILITY](#)

For more information or to schedule a tour, please contact:



JEFF LIVINGSTON
425.274.4288
livingston@broderickgroup.com

RAWLEY HOLMBERG
425.274.4284
holmberg@broderickgroup.com

SAMSON TORO
425.274.4289
toro@broderickgroup.com

JONESCO

BUSINESS CENTER

8722 - 8920 122nd Ave NE | Kirkland, WA

BLDG. 8800

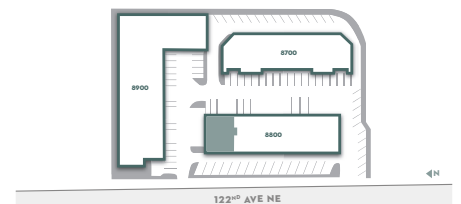
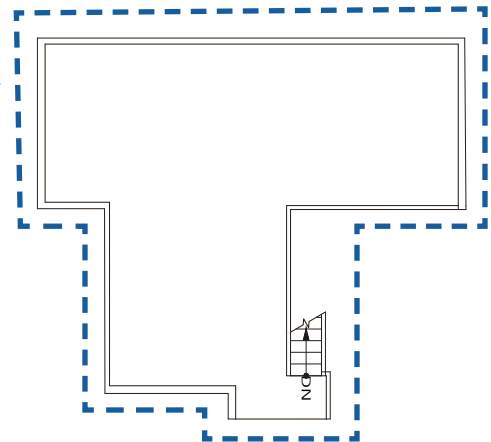
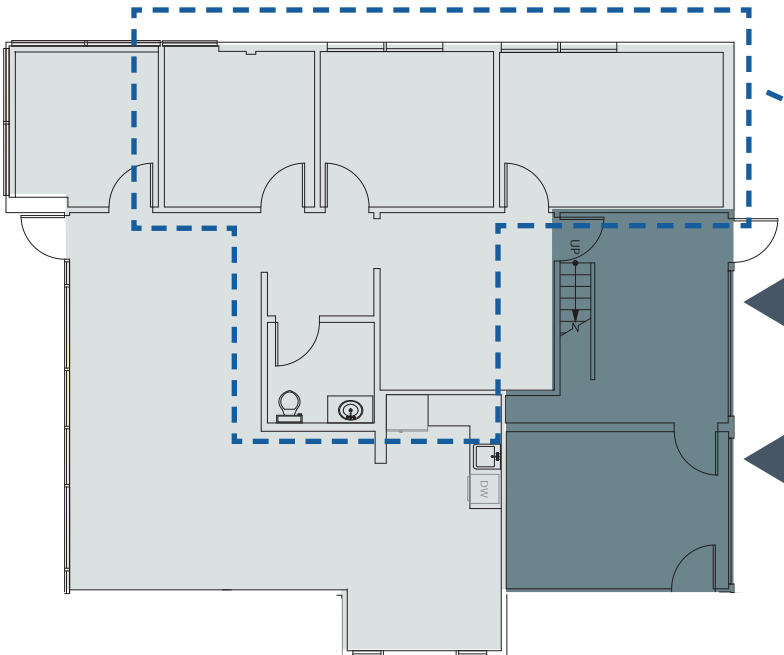


SUITE 8826

2,279 RSF
AVAILABLE NOW

GROUND FLOOR

MEZZANINE



WAREHOUSE



OFFICE



GRADE LEVEL DOOR



DOCK-HIGH DOOR



[BACK TO AVAILABILITY](#)



For more information or to schedule a tour, please contact:

JEFF LIVINGSTON
425.274.4288
livingston@broderickgroup.com

RAWLEY HOLMBERG
425.274.4284
holmberg@broderickgroup.com

SAMSON TORO
425.274.4289
toro@broderickgroup.com

JONESCO

BUSINESS CENTER

8722 - 8920 122nd Ave NE | Kirkland, WA

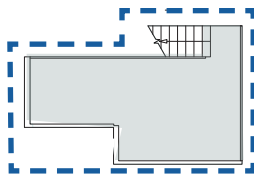
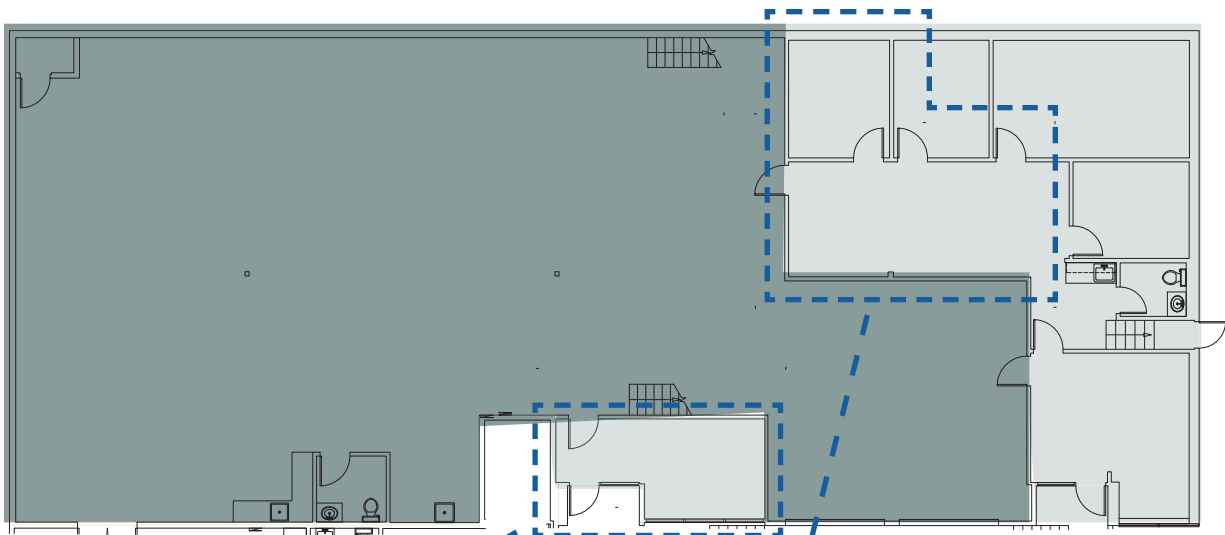
BLDG. 8900 / FL. 1



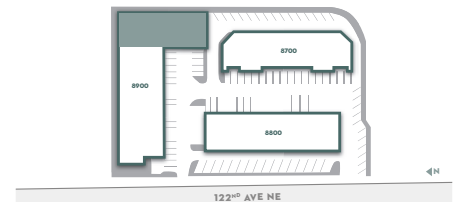
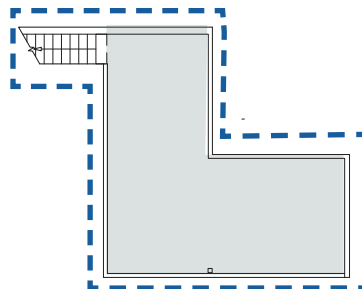
SUITE 8902

6,588 RSF
AVAILABLE AUGUST 1, 2026
FOUR PRIVATE OFFICES
TWO DOCK-HIGH DOORS

GROUND FLOOR



MEZZANINE



WAREHOUSE

OFFICE

GRADE LEVEL DOOR

DOCK-HIGH DOOR



 [BACK TO AVAILABILITY](#)



For more information or to schedule a tour, please contact:

JEFF LIVINGSTON
425.274.4288
livingston@broderickgroup.com

RAWLEY HOLMBERG
425.274.4284
holmberg@broderickgroup.com

SAMSON TORO
425.274.4289
toro@broderickgroup.com

JONESCO

BUSINESS CENTER

8722 - 8920 122nd Ave NE | Kirkland, WA

AREA AMENITIES



- 1 Mercury's Coffee Co.
- 2 Starbucks
- 3 Costco Wholesale
- 4 McDonald's
- 5 The Lime
- 6 Thai Wisdom Bistro
- 7 Safeway
- 8 Little Caesars Pizza
- 9 Walgreens

- 10 Kirkland Urban
 - Acropolis Pizza & Pasta
 - Dough Zone
 - Chainline Brewing Co.
 - Wells Fargo
 - Little Brother
 - Tutta Bella
 - Shake Shack
 - QFC
 - Caffe Ladro
 - Belle Marie Hair Salon
 - FedEx Office Print & Shop Center

- 11 Downtown Kirkland
 - PCC Community Market
 - The Guilt Trip Bar & Kitchen
 - The Heathman Hotel
 - KIWAMI Sushi Bar
 - Wing Dome
 - Coastline Burgers
 - Shangri-La Spa
 - Kirkland Bakery
 - Anthony's HomePort
 - Flatstick Pub

For more information or to schedule a tour, please contact:



JEFF LIVINGSTON
425.274.4288
livingston@broderickgroup.com

RAWLEY HOLMBERG
425.274.4284
holmberg@broderickgroup.com

SAMSON TORO
425.274.4289
toro@broderickgroup.com