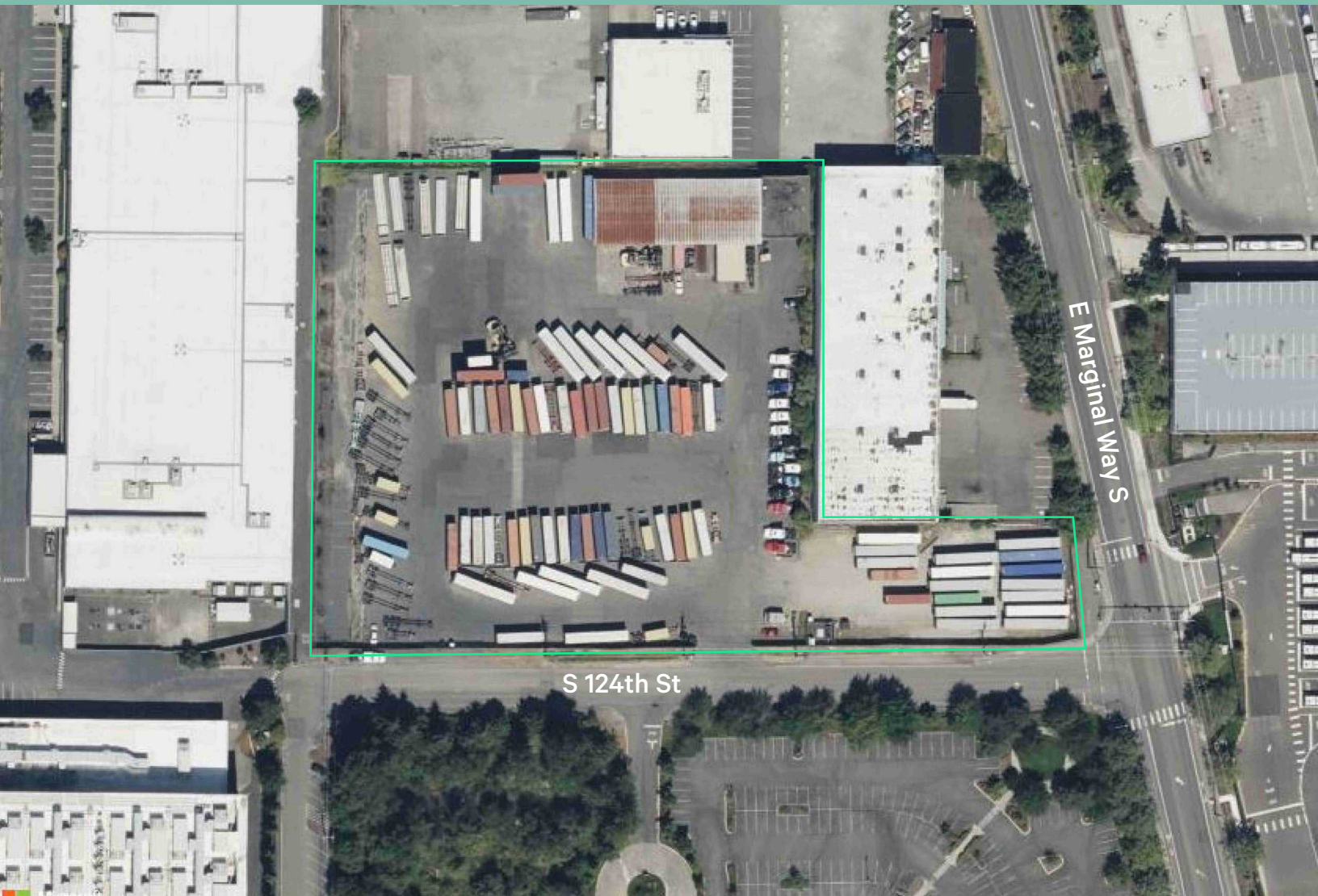
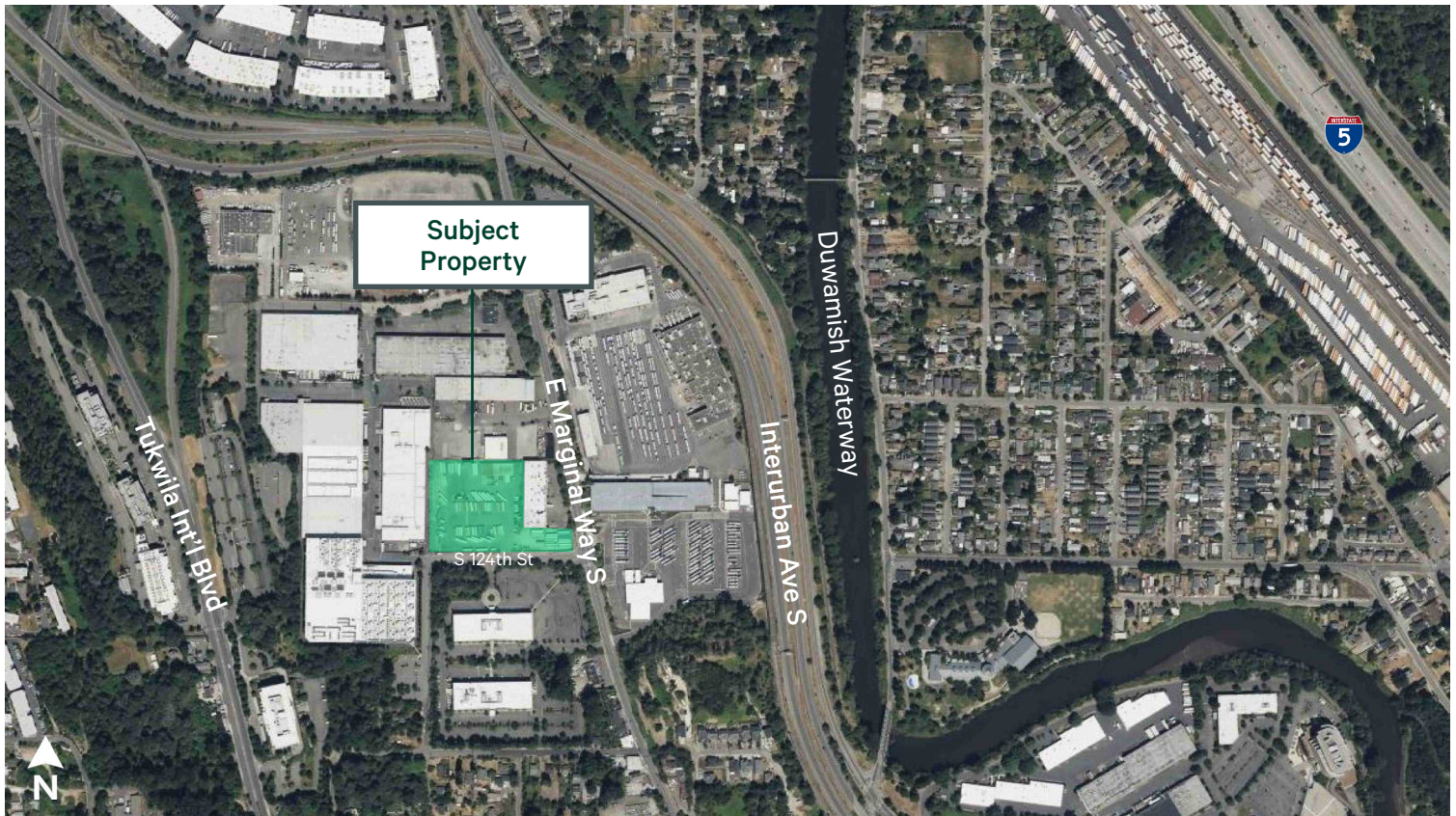


Industrial Yard + Building

3600 S 124th Street
Tukwila, WA

±4.5 Acre Yard | 9,950 SF Building | 1,500 SF Office





Property Highlights

- + 9,950 SF building with 1,500 SF office on two levels
- + 11 DH positions
- + ±4.5 Acre yard
- + Clear Height: 16'
- + Year Built: 1972
- + MIC/H (Heavy Zoning Classification)
- + Located at midpoint between SeaTac Int'l Airport and Port of Seattle
- + Contact broker for rates

Contact

Will Schmidt
Vice President
+1 206 794 0421
will.schmidt1@cbre.com

© 2026 CBRE, Inc. All rights reserved. This information has been obtained from sources believed reliable, but has not been verified for accuracy or completeness. You should conduct a careful, independent investigation of the property and verify all information. Any reliance on this information is solely at your own risk. CBRE and the CBRE logo are service marks of CBRE, Inc. All other marks displayed on this document are the property of their respective owners, and the use of such logos does not imply any affiliation with or endorsement of CBRE. Photos herein are the property of their respective owners. Use of these images without the express written consent of the owner is prohibited.