



TUKWILA COMMERCE PARK

12606 INTERURBAN AVE S,
BLDG B, SUITE 110-120, TUKWILA, WA

FOR LEASE 7,118 SF

2,144 SF Office

12' Clear height

3 Drive-in doors

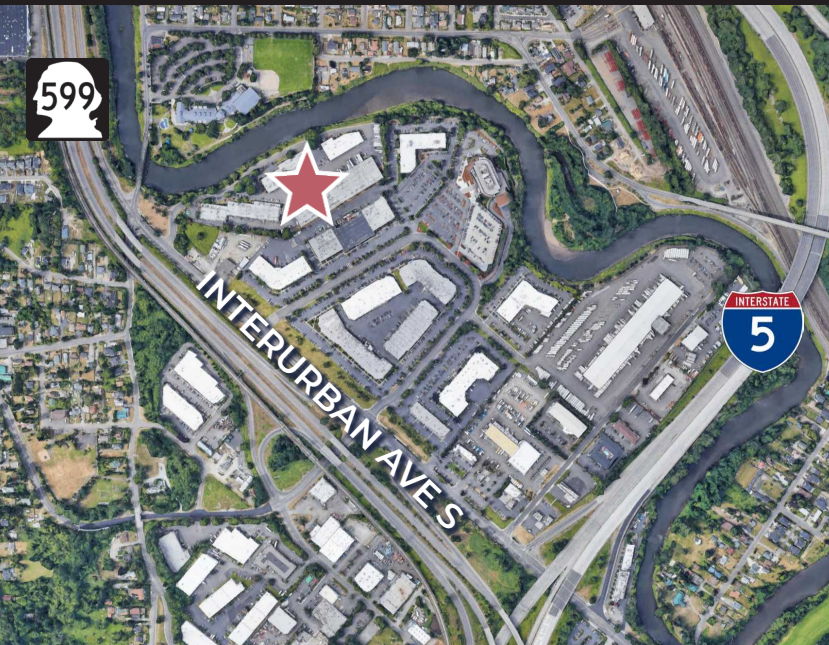
Available May 1, 2026

Call agent for rates

2026 Est. NNN \$0.42/SF

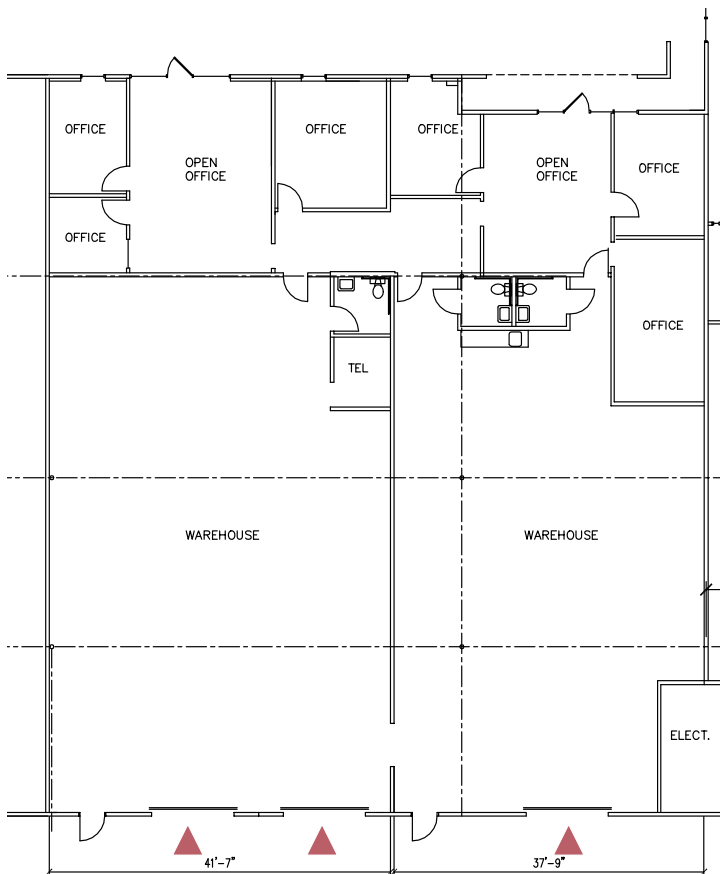
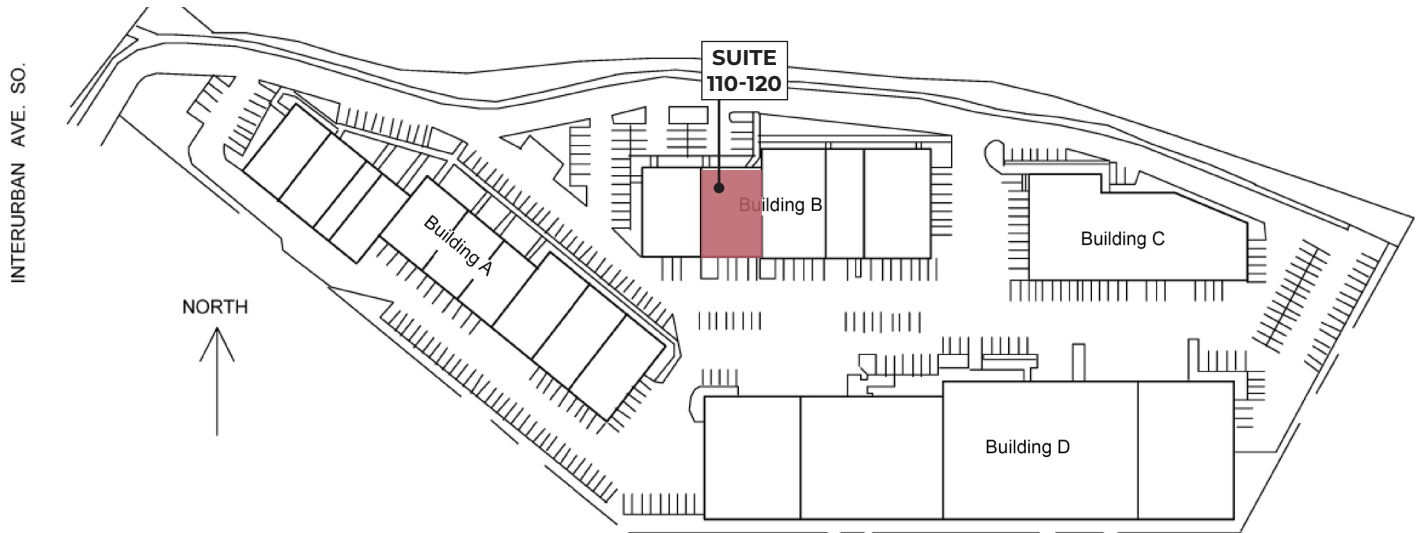
Excellent access to I-5 and SR-599

Adjacent to Tukwila Community Center
and Interurban Trail



MATT WOOD, SIOR
+1 206 595 6814
matt.wood@kbcadvisors.com

JOHN BROOM
+1 206 877 2750
john.broom@kbcadvisors.com



Space Information

- 7,118 SF Total
- 2,144 SF Office
- 12' Clear height
- 3 Drive-in doors
- Available May 1, 2026

 Grade-level door

MATT WOOD, SIOR
 +1 206 595 6814
 matt.wood@kbcadvisors.com

JOHN BROOM
 +1 206 877 2750
 john.broom@kbcadvisors.com