

RETAIL SPACE AVAILIABLE

3831 STONE WAY N SEATTLE, WA 98103

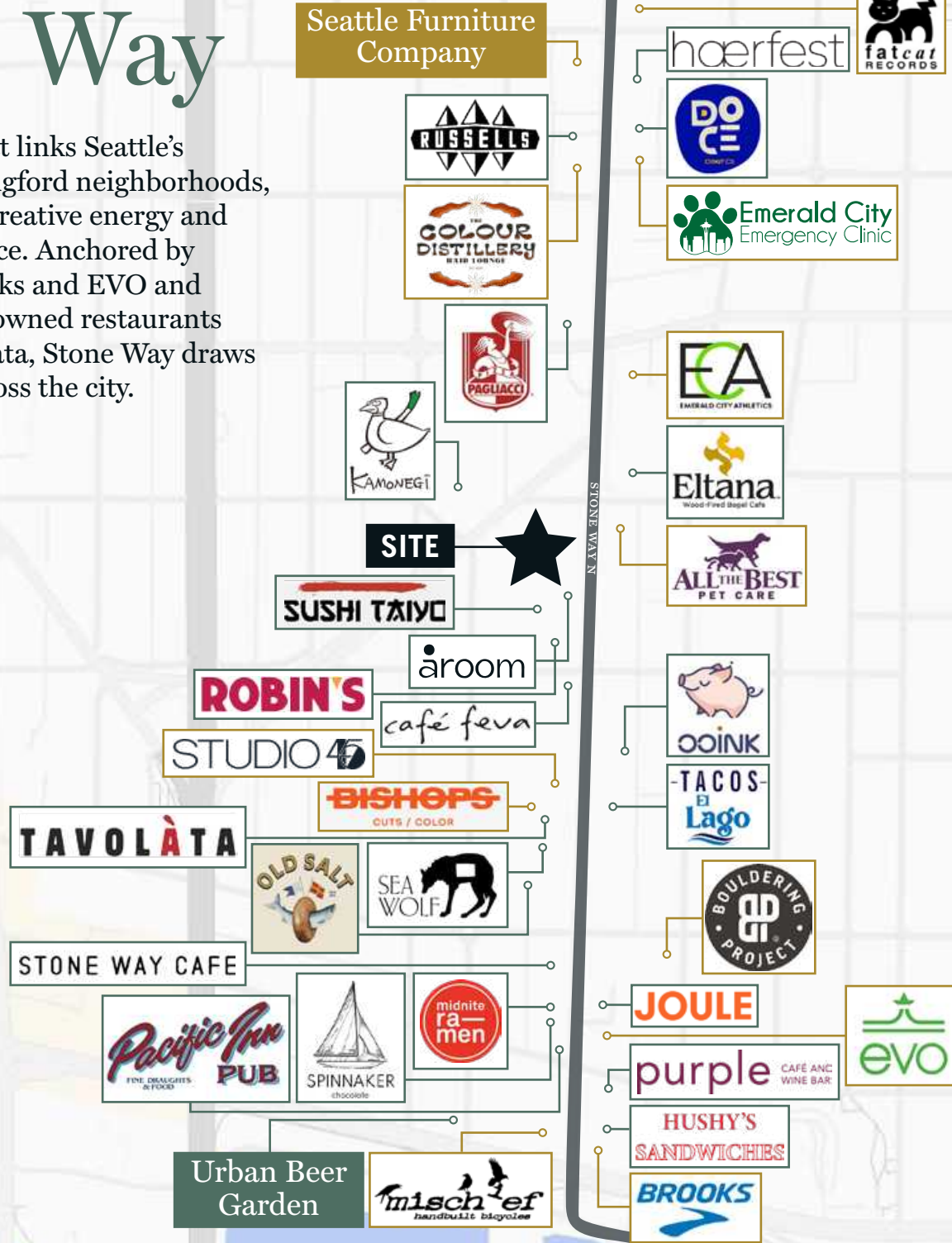
YONDER



REAL **RETAIL**

Stone Way

A lively corridor that links Seattle's Fremont and Wallingford neighborhoods, offering a blend of creative energy and everyday convenience. Anchored by retail favorites Brooks and EVO and a collection of chef owned restaurants from Joule to Tavolata, Stone Way draws customers from across the city.



The Stone Way Neighborhood


Stone Way is an emerging neighborhood that connects Fremont, the self-proclaimed Center of the Universe, and Wallingford, one of Seattle's most vibrant and beloved neighborhoods. Highly walkable with strong multi-family residential, Stone Way is densely populated with an affluent and well-educated customer base.



5-MINUTE DRIVE TIME

	40,735	POPULATION
	\$182.4k	AHHI
	80.6%	BACHELORS +
	26,521	EMPLOYEES

10-MINUTE DRIVE TIME

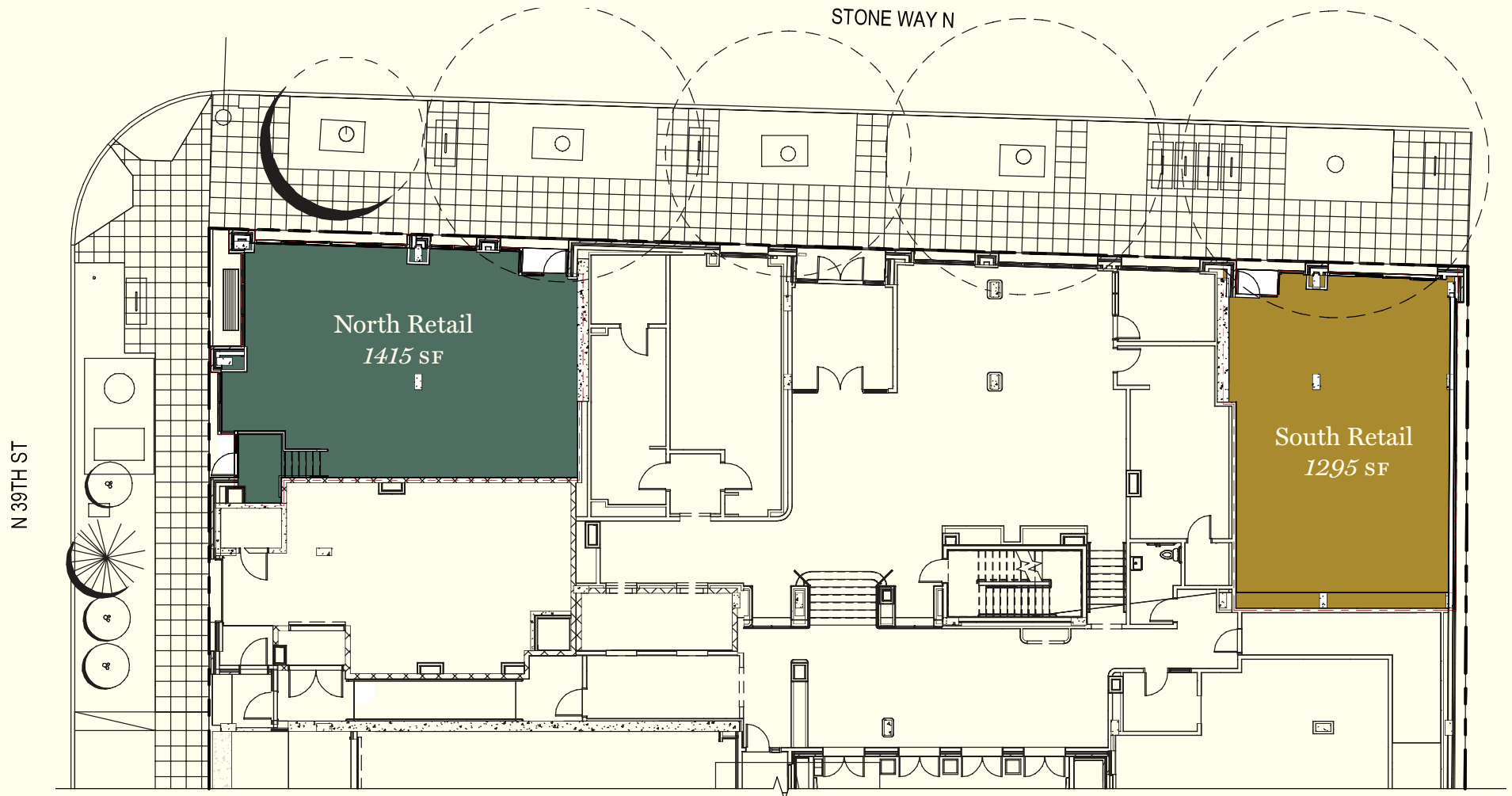
	333,104	POPULATION
	\$169.9K	AHHI
	74.2%	BACHELORS +
	209,168	EMPLOYEES

The Project

Opening in Q1 2028, Yonder is a mixed-use development that will introduce 231 residential units to Stone Way. The site offers a unique opportunity for two retailers to join this lively community.

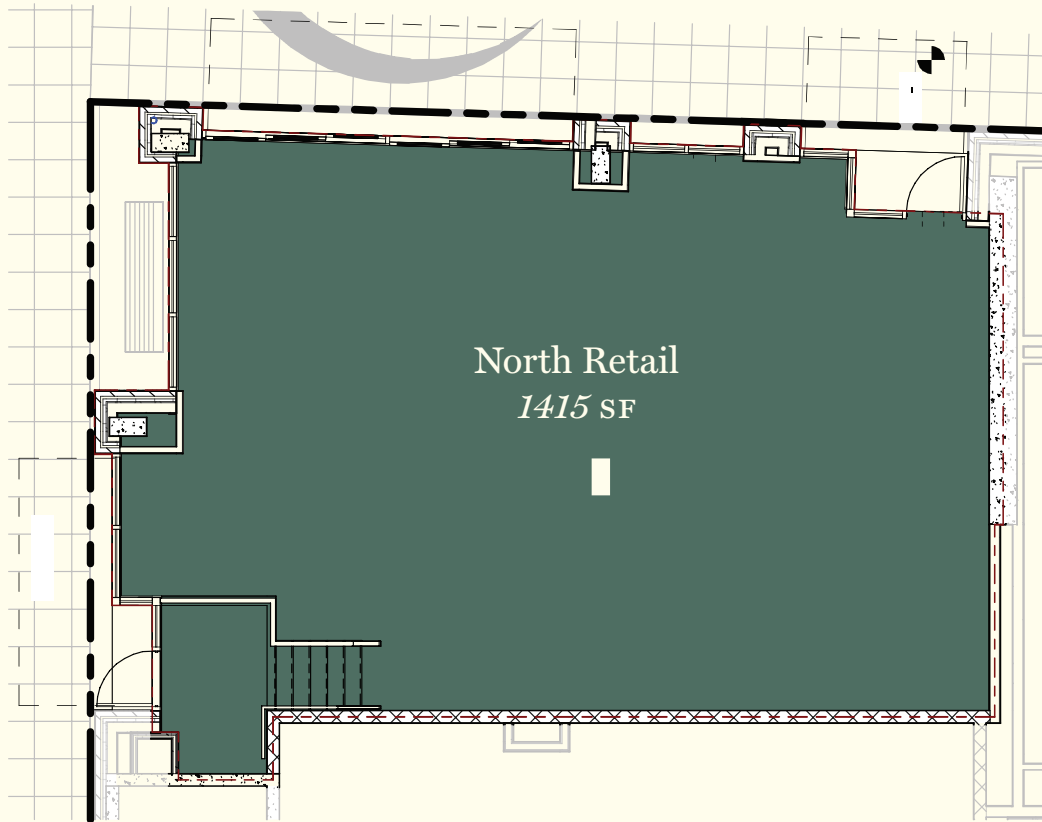


The Opportunity



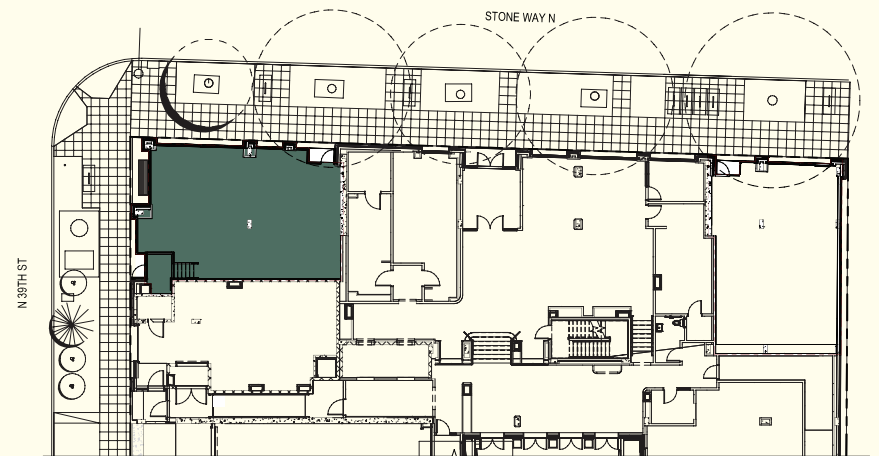
SUITE	SF	NNN	RENT
North	1415 SF	TBD	Please Call
South	1295 SF	TBD	Please Call

North Retail

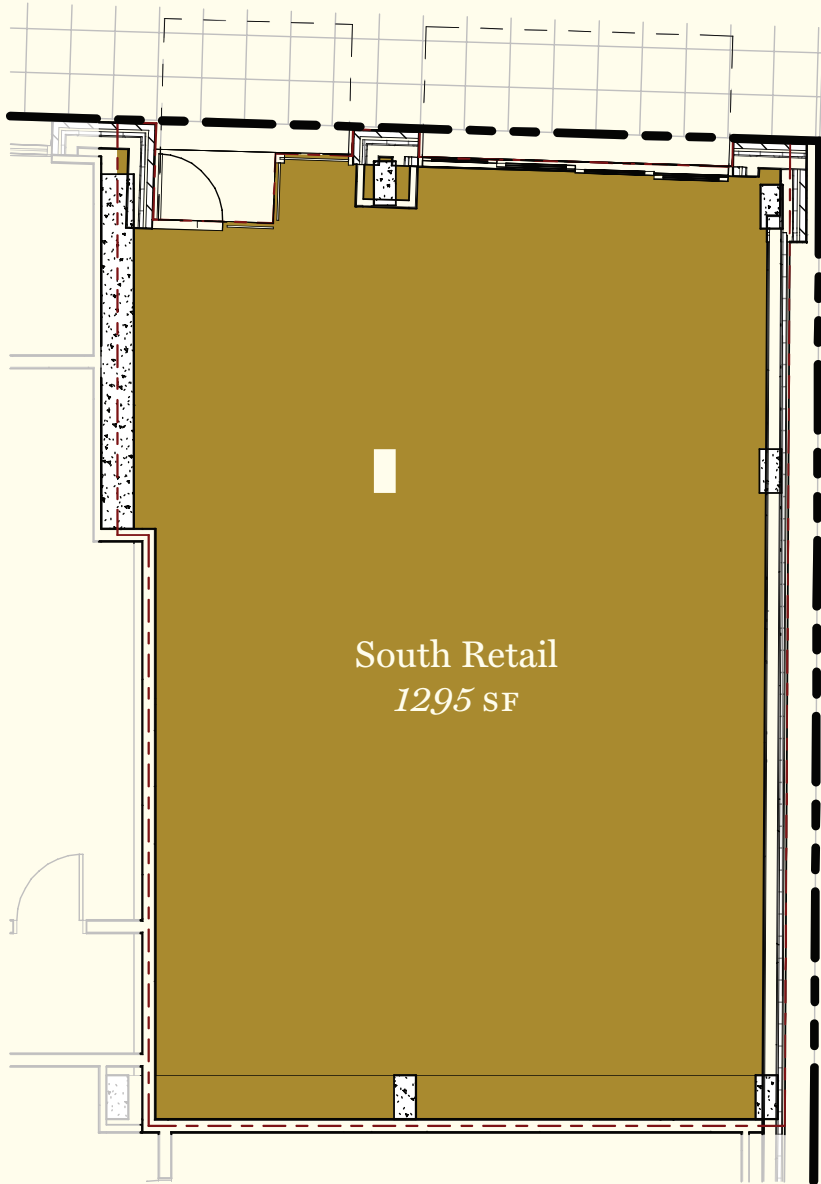


SUITE DETAILS

- Size *1415 SF*
- Corner location
- Vented with a Type 1 hood
- Estimated project completion in Q1 2028

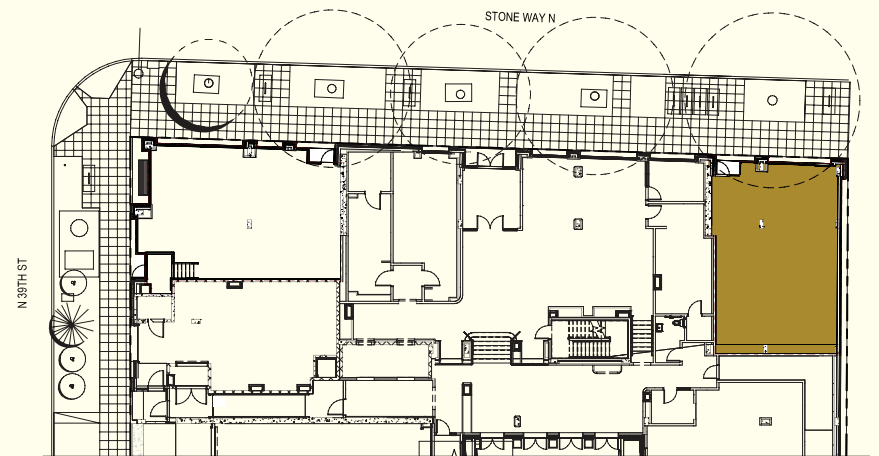


South Retail



SUITE DETAILS

- Size 1295 SF
- High ceilings and large windows
- Ideal for service, beauty, boutique fitness
- Estimated project completion in Q1 2028



MARIA ROYER

*206-464-0600 office
mroyer@real-retail.net*

DEBORAH ROSS

*206-849-2351 cell
deborah@real-retail.net*

REAL RETAIL

This information supplied herein has been secured from sources believed to be reliable; however, no representations are made to its accuracy. Prospective tenants or buyers should consult their professional advisors and conduct their own independent investigation. Properties are subject to change in price and/or availability without notice.

