

Office / Service Retail Space for Lease

AVAILABLE: 3,794 – 9,397 RSF | CAPITOL HILL LOCATION

115 15TH AVE E, SEATTLE, WA 98112



Property Highlights

LEASE RATE: \$20.00 PSF NNN | EST. NNN: \$11.87 PSF

Located in highly desirable Capitol Hill neighborhood

Signage opportunities

Private interior elevator in building

±6 free surface onsite parking spaces

Easy access to I-5 and Downtown Seattle

Perfect for service-oriented business seeking high visibility

Walk Score® 97 | Transit Score® 78 | Bike Score® 89

[This property is also available for sale \[Click for Info\]](#)



FOR MORE INFO
CONTACT

BOJIDAR GABROVSKI
JACK DEANE
JACK FRANZ

bgabrovski@orioncp.com
jdeane@orioncp.com
jfranz@orioncp.com

847.275.8474
206.707.1315
925.482.7232

1218 Third Ave, Suite 2200
Seattle, WA 98101
www.orioncp.com

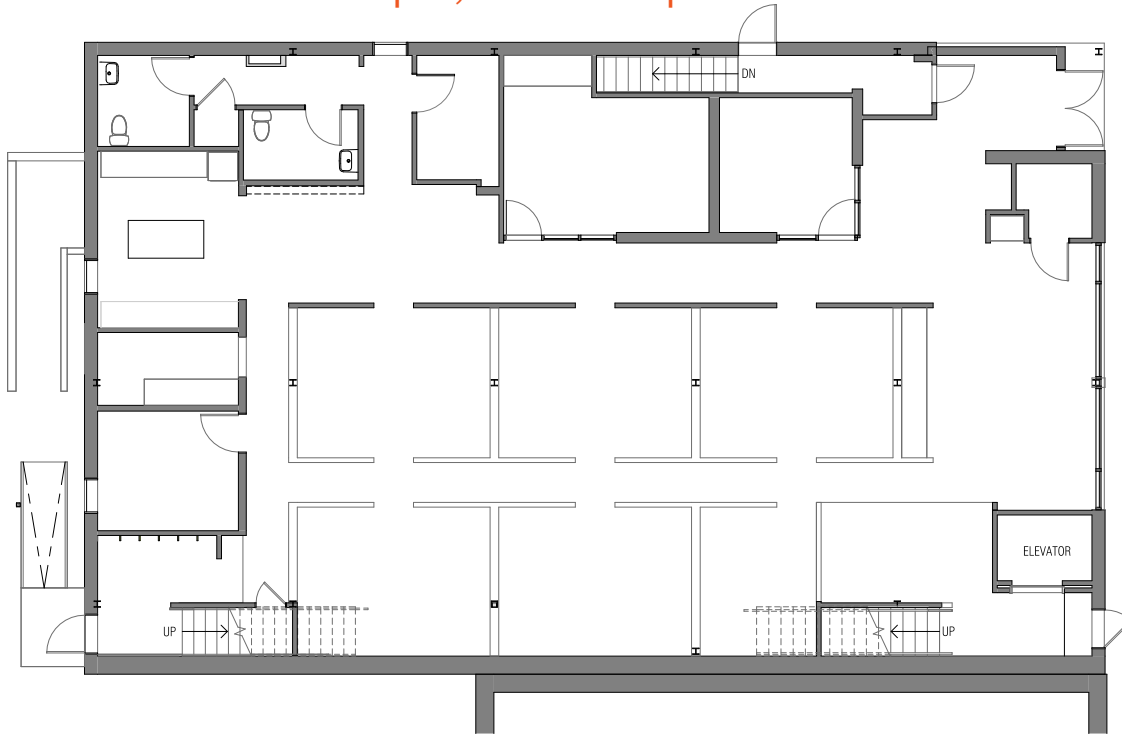
ORION
COMMERCIAL PARTNERS

Office / Service Retail Space for Lease

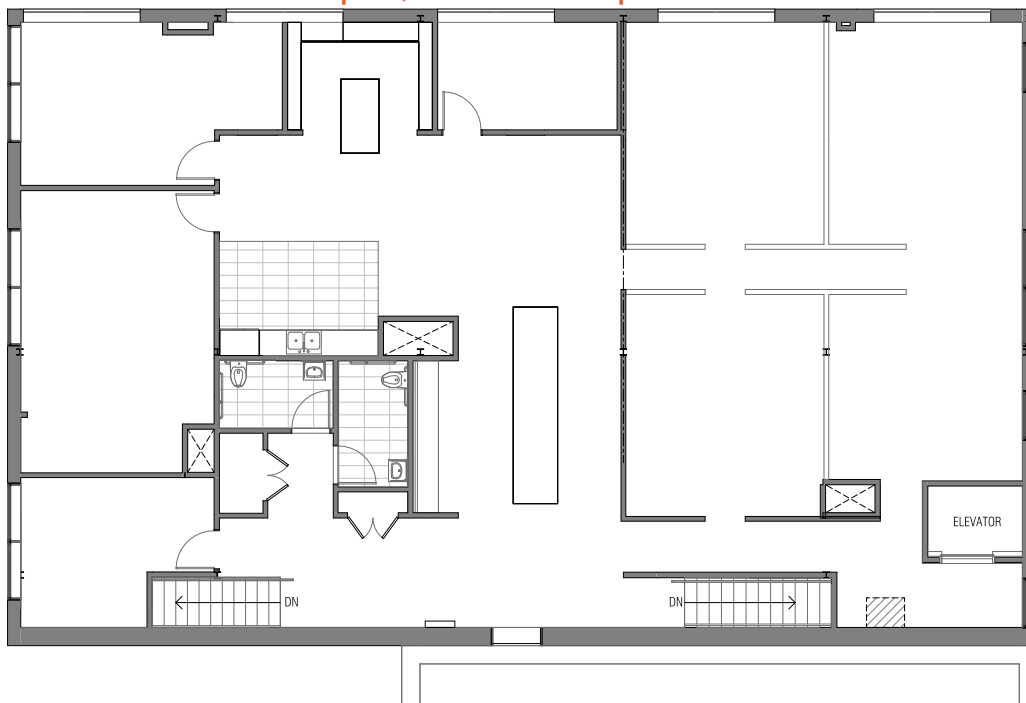
FIRST & SECOND FLOOR | 3,794 – 9,397 RSF FULL BUILDING

115 15TH AVE E, SEATTLE, WA 98112

First Floor | 3,794 RSF | Renovated 2016



Second Floor | 3,888 RSF | Renovated 2020



FOR MORE INFO
CONTACT

BOJIDAR GABROVSKI
JACK DEANE
JACK FRANZ

bgabrovski@orioncp.com
jdeane@orioncp.com
jfranz@orioncp.com

847.275.8474
206.707.1315
925.482.7232

1218 Third Ave, Suite 2200
Seattle, WA 98101
www.orioncp.com

ORION
COMMERCIAL PARTNERS

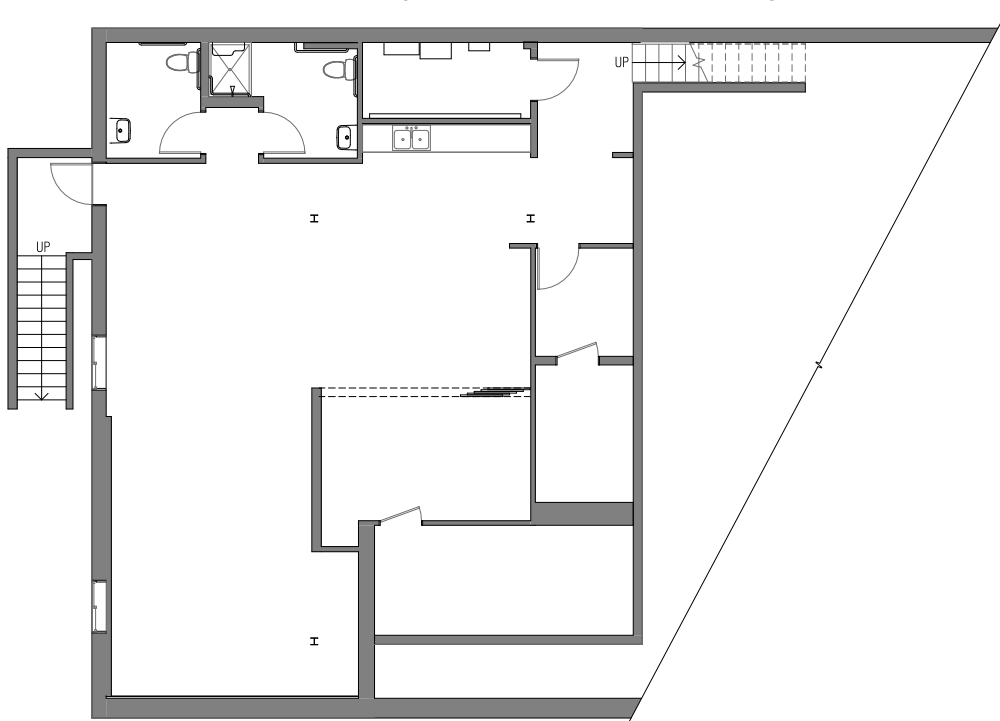
Office / Service Retail Space for Lease

AVAILABLE: 3,794 – 9,397 RSF | CAPITOL HILL LOCATION

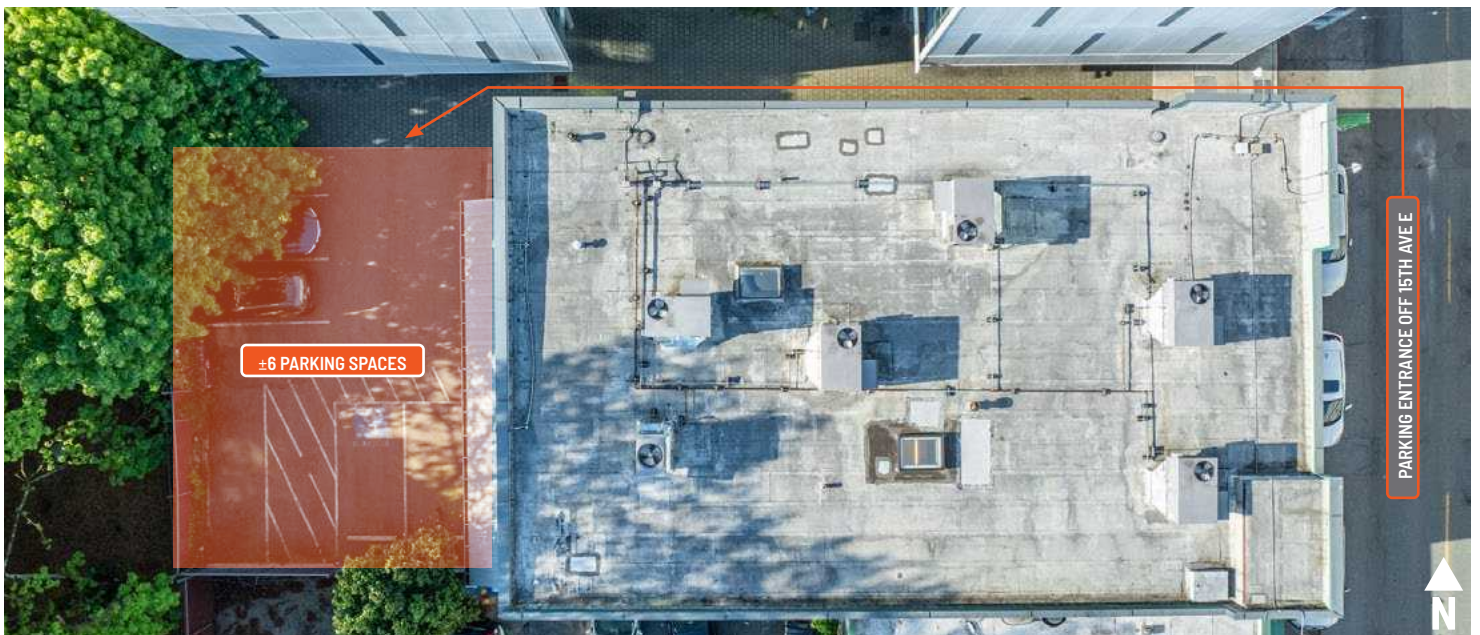
115 15TH AVE E, SEATTLE, WA 98112

Basement | 1,715 RSF | Renovated 2016

Available only with first floor or full building lease



Onsite Parking



FOR MORE INFO
CONTACT

BOJIDAR GABROVSKI
JACK DEANE
JACK FRANZ

bgabrovski@orioncp.com
jdeane@orioncp.com
jfranz@orioncp.com

847.275.8474
206.707.1315
925.482.7232

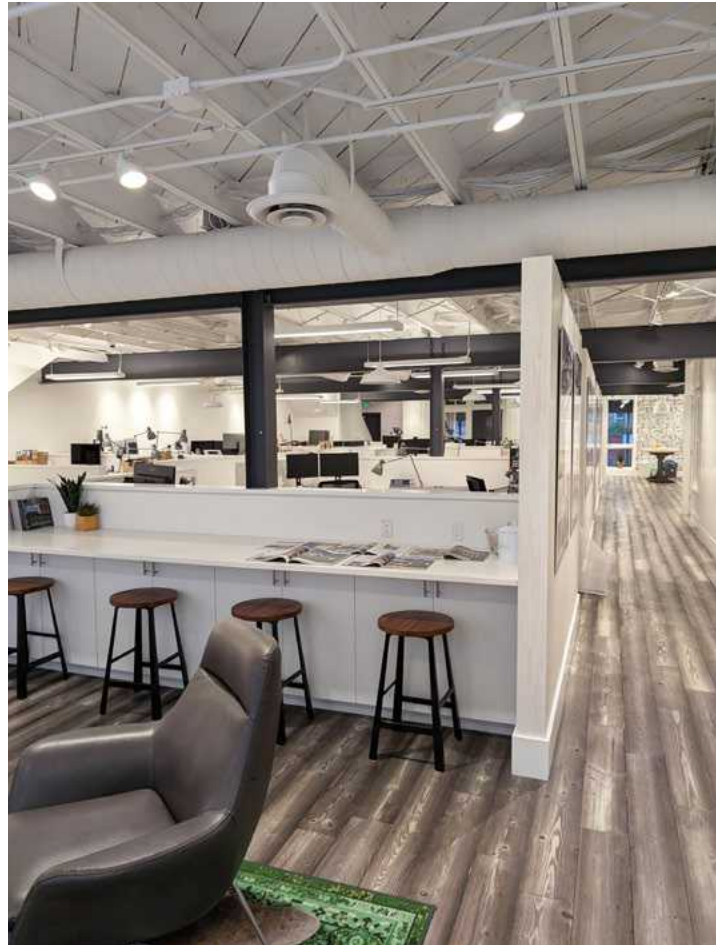
1218 Third Ave, Suite 2200
Seattle, WA 98101
www.orioncp.com

ORION
COMMERCIAL PARTNERS

Office / Service Retail Space for Lease

AVAILABLE: 3,794 – 9,397 RSF | CAPITOL HILL LOCATION

115 15TH AVE E, SEATTLE, WA 98112



FOR MORE INFO
CONTACT

BOJIDAR GABROVSKI
JACK DEANE
JACK FRANZ

bgabrovski@orioncp.com
jdeane@orioncp.com
jfranz@orioncp.com

847.275.8474
206.707.1315
925.482.7232

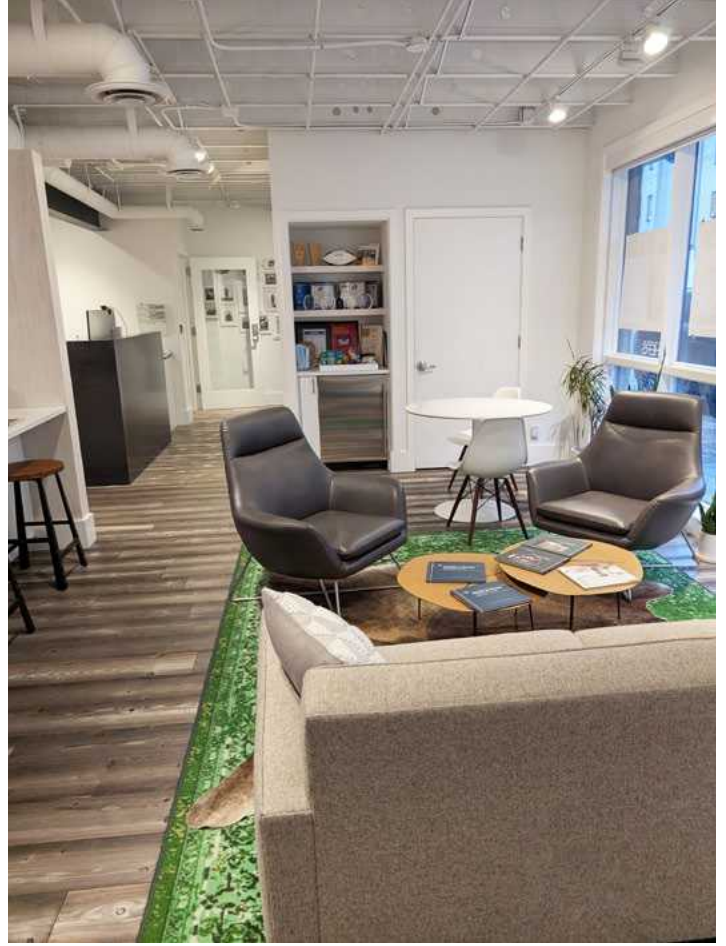
1218 Third Ave, Suite 2200
Seattle, WA 98101
www.orioncp.com

ORION
COMMERCIAL PARTNERS

Office / Service Retail Space for Lease

AVAILABLE: 3,794 – 9,397 RSF | CAPITOL HILL LOCATION

115 15TH AVE E, SEATTLE, WA 98112



FOR MORE INFO
CONTACT

BOJIDAR GABROVSKI
JACK DEANE
JACK FRANZ

bgabrovski@orioncp.com
jdeane@orioncp.com
jfranz@orioncp.com

847.275.8474
206.707.1315
925.482.7232

1218 Third Ave, Suite 2200
Seattle, WA 98101
www.orioncp.com

ORION
COMMERCIAL PARTNERS

Office / Service Retail Space for Lease

AVAILABLE: 3,794 – 9,397 RSF | CAPITOL HILL LOCATION

115 15TH AVE E, SEATTLE, WA 98112

Location Highlights

- Capitol Hill neighborhood with strong retail, dining, and residential density
- 11 minute walk to Light Rail
- 10 minute commute to Downtown Seattle
- 11 minute commute to South Lake Union

The map displays the Capitol Hill neighborhood in Seattle, WA, centered around 115 15th Ave E. Key features include:

- Neighborhoods:** SOUTH LAKE UNION, CASCADE, CAPITOL HILL, FIRST HILL, CHERRY HILL, SQUIRE PARK, MILLER.
- Streets:** I-5 Express, Fairview Ave N, Bellevue Ave E, Broadway E, Harvard Ave E, E Roy St, E John St, E Denny Way, E Pine St, E Pike St, E Union St, E Madison St, E Spring St, E Cherry St, E Republican St, E Harrison St, E Olive St, E Pike St, E Union St, E Madison St, E Spring St, E Marion St, E Columbia St.
- Businesses and Landmarks:** Starbucks, QFC, Safeway, Kaiser Permanente, Trader Joe's, 7-Eleven, Neumos, Whole Foods Market, Virginia Mason Franciscan Health, Seattle Central College, Cal Anderson Park, Swedish Medical Center, SeattleU.
- Transportation:** Light Rail station at 115 15th Ave E.

FOR MORE INFO
CONTACT

BOJIDAR GABROVSKI
JACK DEANE
JACK FRANZ

bgabrovski@orioncp.com
jdeane@orioncp.com
jfranz@orioncp.com

847.275.8474
206.707.1315
925.482.7232

1218 Third Ave, Suite 2200
Seattle, WA 98101
www.orioncp.com

ORION
COMMERCIAL PARTNERS