

# JACKSON APTS

2401 S Jackson Street, Seattle, WA 98144

FOR LEASE

Available Now: 3,212 SF



Now leasing at Jackson Apartments, this space is the last remaining retail vacancy at the property. It sits within an active, neighborhood-driven mix surrounded by everyday draws like Left Side CrossFit, 23rd Ave Brewery, QueenCare, booSH, and Simply Soulful.

The combination of fitness, food and beverage, and personal services creates steady foot traffic throughout the day and a built-in customer base for a retail or service user looking to plug into an established community hub.

- 3,212 SF Available
- 532 residential units above.
- AMPLE PARKING! 161 retail parking stalls in below-grade garage.
- Located at the busy intersection of 23rd & Jackson with easy access to public transportation, Downtown, Capital Hill, and more.
- Exceptional visibility and identity.
- First generation retail shell.





# JACKSON<sup>APTS</sup>

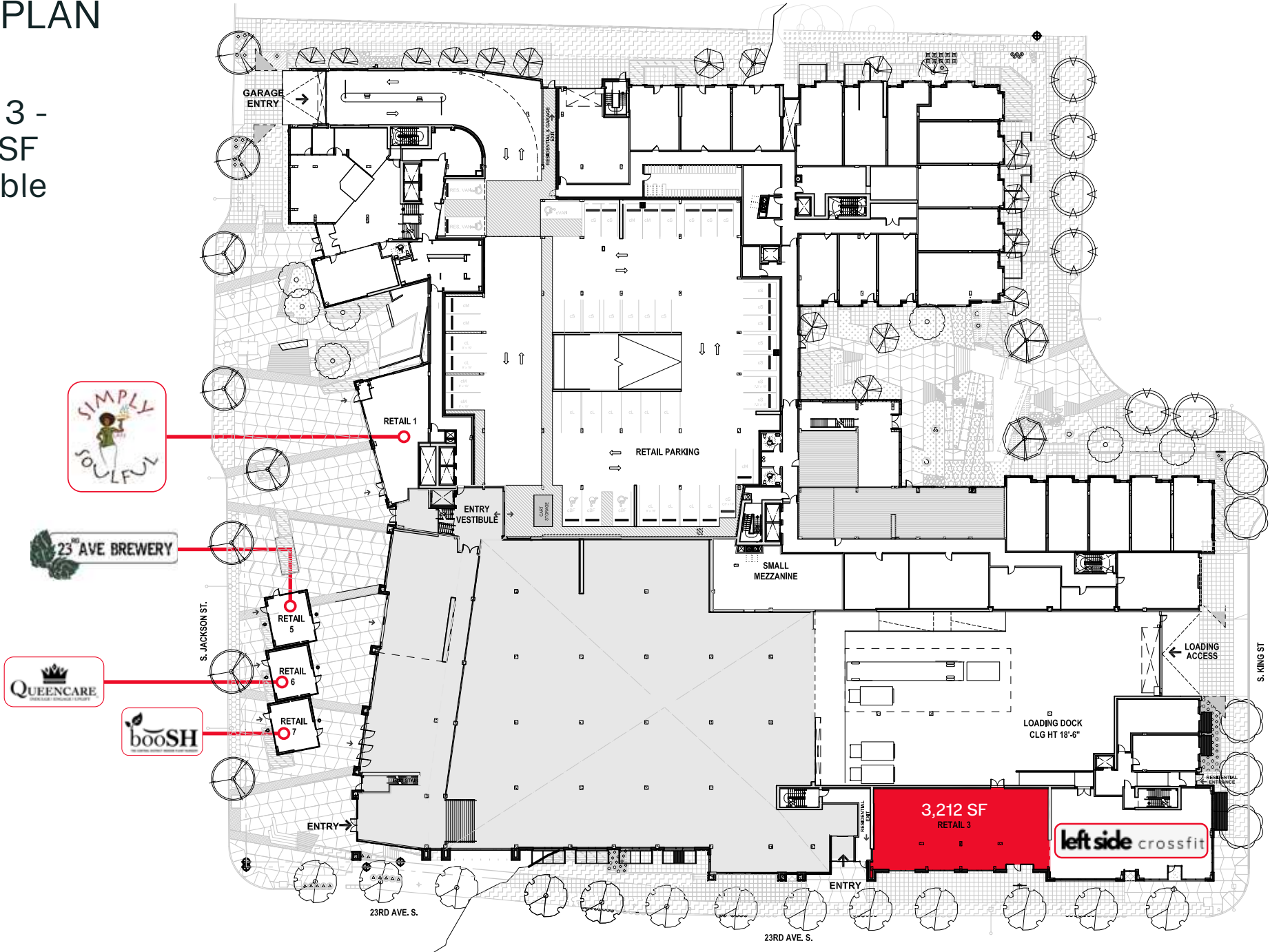
A vibrant, pedestrian-friendly, mixed-use commercial district located at the busy intersection of 23rd & Jackson in the heart of the Central District.





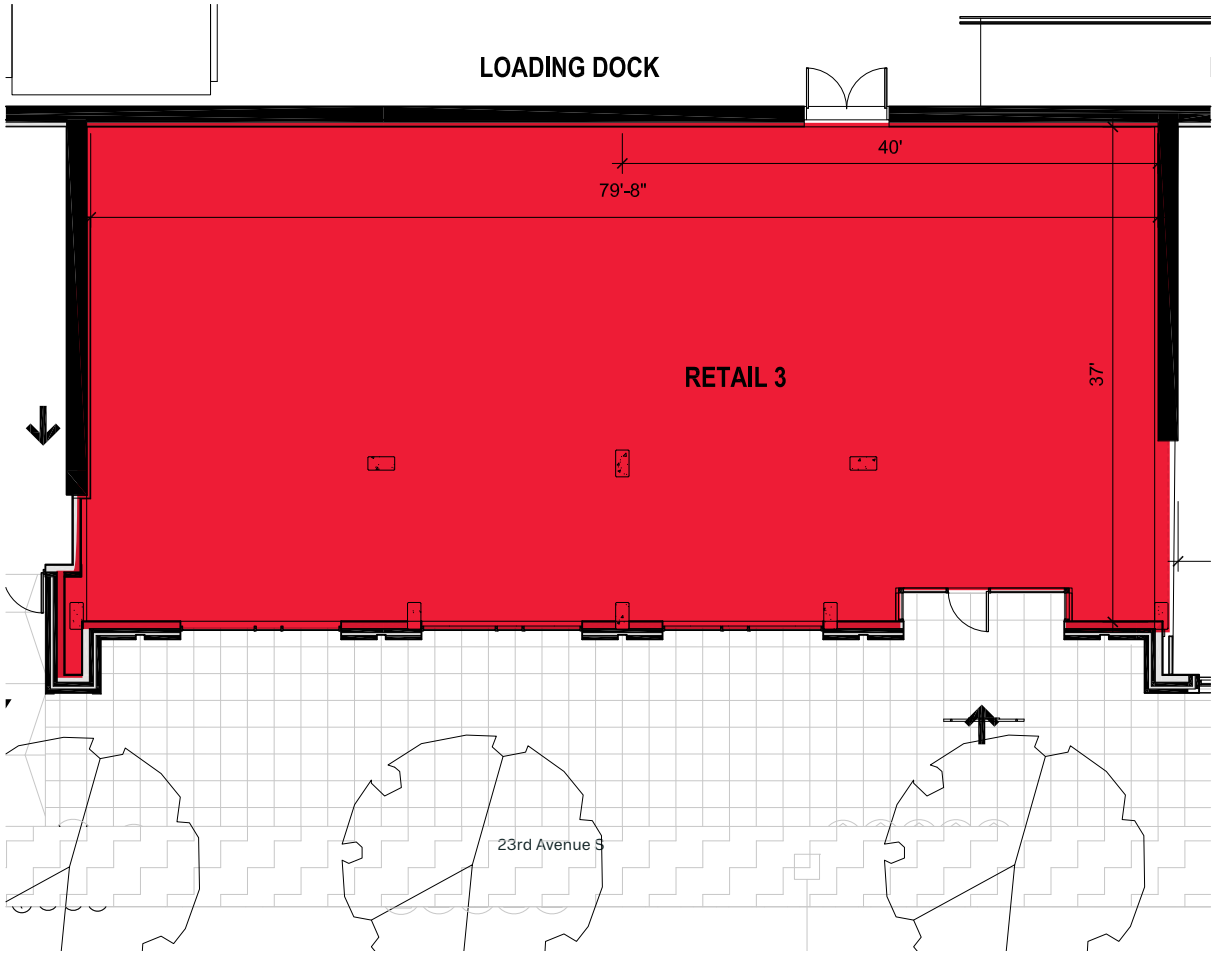
# SITE PLAN

Retail 3 -  
3,212 SF  
Available



# FLOOR PLAN

Retail 3 - 3,212 SF



# Demographics:



## Average Household Income:

- 1-Mile: \$131,836
- 2-Mile: \$126,808
- 5-Mile: \$144,899



## Population:

- 1-Mile: 37,830
- 2-Mile: 136,094
- 5-Mile: 478,577



## Traffic Counts:

- 14,255 Vehicles pre day @ 23rd Ave S & S Jackson St





# JACKSON APTS

2401 S Jackson St, Seattle, WA 98144

**Kara Farley**

karaf@wccommercialrealty.com  
682 351 8844

**Madeline Stutz**

madelines@wccommercialrealty.com  
206 422 7598

DISCLAIMER: The above information has been secured from sources believed to be reliable, however, no representations are made to its accuracy. Prospective tenants or buyers should consult their professional advisors and conduct their own independent investigation. Site plan and configuration are subject to change. Properties are subject to change in price and/or availability without notice. West Coast Commercial Realty, LLC

**WCCR** | West Coast  
Commercial  
Realty



206 283 5212

wccommercialrealty.com