

For Lease

Premier Office Campus in Southcenter



Parkwest Commons

545-655 Andover Park W, Tukwila, WA

- 10-building, 200,000 SF office campus, centrally located in Southcenter
- On-site amenities include a 50-person conference room, fitness center and two-story atrium lounge
- Several improvements planned for 2021, including updated common areas and new restrooms
- Abundant parking; ratio of 4+/1,000 SF
- No local business & occupation tax
- Strong & responsive local ownership
- Several high-speed & fiber internet providers available
- **Lease Rate: \$29.50 PSF, Full Service**

For more information, contact:

Mike George

+1 425 586 5618
mgeorge@nai-psp.com

Tony Rona

+1 425 586 5647
ssulman@nai-psp.com



10900 NE 8th Street Suite 1500
Bellevue, Washington 98004
+1 425 586 5600
nai-psp.com

For Lease
Parkwest Commons




Downtown
Seattle

Westfield
SOUTHCENTER

Tukwila
Pond Park

Andover Park West

 DISTANCE
7 Mins: SeaTac Airport
14 Mins: Downtown Seattle
15 Mins: Downtown Bellevue
22 Mins: Downtown Tacoma



NAI Puget Sound
Properties

10900 NE 8th Street Suite 1500
Bellevue, Washington 98004
+1 425 586 5600
nai-psp.com

For Lease
Parkwest Commons
Overhead Property Map



On-site project amenities in the 635 Building:



Conference Center



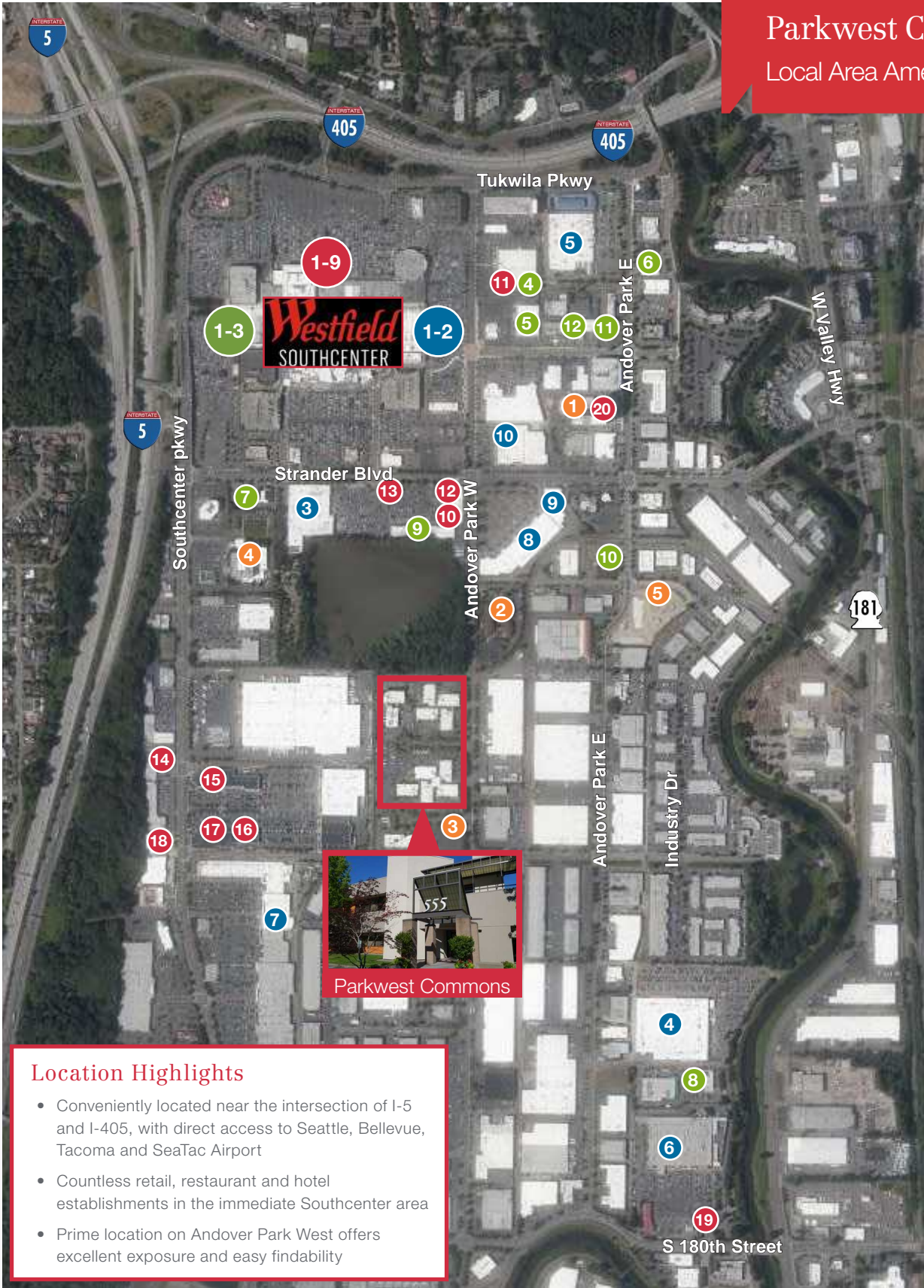
Fitness Center



10900 NE 8th Street Suite 1500
Bellevue, Washington 98004
+1 425 586 5600
nai-psp.com

THE INFORMATION CONTAINED HEREIN HAS BEEN GIVEN TO US BY THE OWNER OF THE PROPERTY OR OTHER SOURCES WE DEEM RELIABLE, WE HAVE NO REASON TO DOUBT ITS ACCURACY, BUT WE DO NOT GUARANTEE IT. ALL INFORMATION SHOULD BE VERIFIED PRIOR TO PURCHASE OR LEASE. 2017/Southend/Southcenter Corporate Square MG 0316

For Lease
Parkwest Commons
 Local Area Amenities



Services

- 1 Bank of America
- 2 Key Bank
- 3 USPS Post Office
- 4 UPS Store
- 5 LA Fitness
- 6 FedEx Office
- 7 Chevron
- 8 Costco Gasoline
- 9 Chase Bank
- 10 Wells Fargo Bank
- 11 Homestreet Bank
- 12 U.S. Bank

Dining

- 1 Cheesecake Factory
- 2 Duke's
- 3 Din Tai Fung
- 4 Buffalo Wild Wings
- 5 Homegrown
- 6 Ivar's
- 7 Joey Kitchen
- 8 Kizuki Ramen
- 9 Nordstrom Café
- 10 Jersey Mike's
- 11 Qdoba
- 12 Corner Bakery
- 13 Starbucks
- 14 The Habit Burger Grill
- 15 Five Guys
- 16 Panera Bread
- 17 Chipotle
- 18 Chick-fil-A
- 19 Taco Time
- 20 Waterleaf Restaurant

Shopping

- 1 Amazon 4-Star
- 2 Apple
- 3 Target
- 4 Costco
- 5 Lowe's
- 6 Home Depot
- 7 Best Buy
- 8 Office Depot
- 9 Barnes & Noble
- 10 REI

Hotels

- 1 Hotel Interurban
- 2 Courtyard by Marriott
- 3 Tru By Hilton
- 4 Doubletree Suites
- 5 Element by Westin

Location Highlights

- Conveniently located near the intersection of I-5 and I-405, with direct access to Seattle, Bellevue, Tacoma and SeaTac Airport
- Countless retail, restaurant and hotel establishments in the immediate Southcenter area
- Prime location on Andover Park West offers excellent exposure and easy findability



Parkwest Commons