

RADIATE APARTMENTS RETAIL

15808 Bear Creek Pkwy, Redmond, WA 98052



Available Now!

LISTING INFORMATION

ADDRESS:	15808 Bear Creek Pkwy, Redmond WA
AVAILABLE SF:	1,716 SF
DATE AVAILABLE:	Immediately
LEASE RATE:	\$35.00 SF/yr (NNN)

COMMENTS

Corner endcap unit located just off of Hwy 520 and a few blocks from Redmond Town Center



RADIATE APARTMENTS RETAIL

15808 Bear Creek Pkwy, Redmond, WA 98052



LEE &
ASSOCIATES

COMMERCIAL REAL ESTATE SERVICES

PHOTOS



CONTACT

Kyle Prosser

253.444.3025

kprosser@lee-associates.com

Amanda Hahnemann, CCIM

206.773.2691

ahahnemann@lee-associates.com

We obtained the information above from sources we believe to be reliable. However, we have not verified its accuracy and make no guarantee, warranty or representation about it. It is submitted subject to the possibility of errors, omissions, change of price, rental or other conditions, prior sale, lease or financing, or withdrawal without notice. We include projections, opinions, assumptions or estimates for example only, and they may not represent current or future performance of the property. You and your tax and legal advisors should conduct your own investigation of the property and transaction.

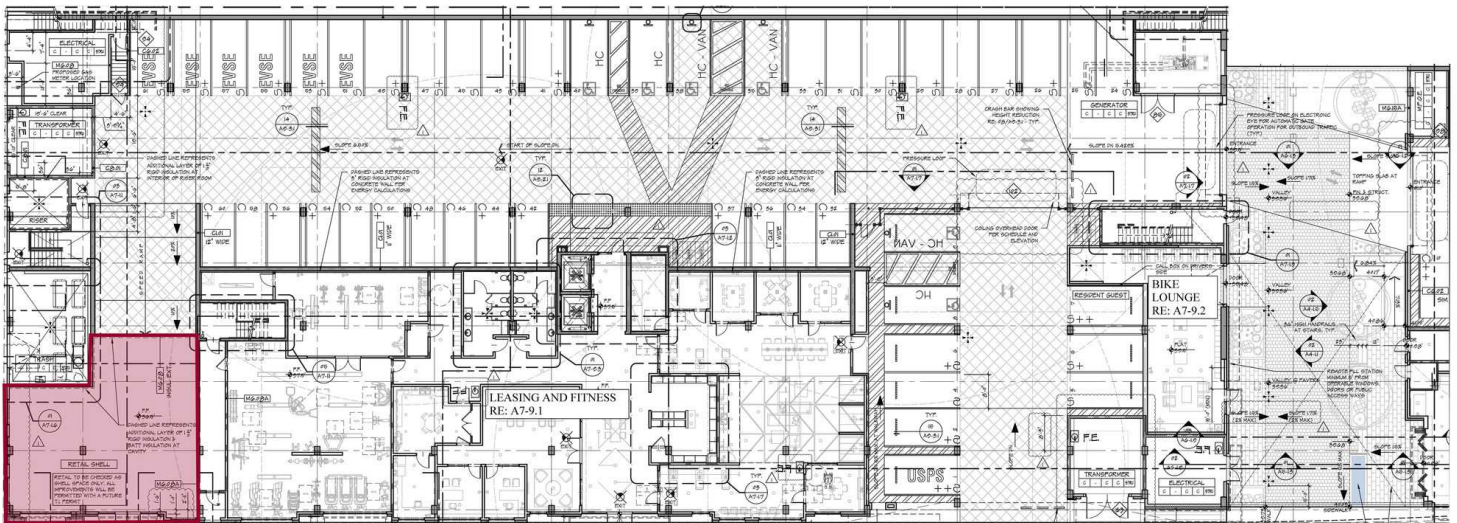
RADIATE APARTMENTS RETAIL

15808 Bear Creek Pkwy, Redmond, WA 98052



COMMERCIAL REAL ESTATE SERVICES

FLOOR PLAN



CONTACT

Kyle Prosser

253.444.3025

kprosser@lee-associates.com

Amanda Hahnemann, CCIM

206.773.2691

ahahnemann@lee-associates.com

We obtained the information above from sources we believe to be reliable. However, we have not verified its accuracy and make no guarantee, warranty or representation about it. It is submitted subject to the possibility of errors, omissions, change of price, rental or other conditions, prior sale, lease or financing, or withdrawal without notice. We include projections, opinions, assumptions or estimates for example only, and they may not represent current or future performance of the property. You and your tax and legal advisors should conduct your own investigation of the property and transaction.

RADIATE APARTMENTS RETAIL

15808 Bear Creek Pkwy, Redmond, WA 98052



COMMERCIAL REAL ESTATE SERVICES



CONTACT

Kyle Prosser

253.444.3025

kprosser@lee-associates.com

Amanda Hahnemann, CCIM

206.773.2691

ahahnemann@lee-associates.com

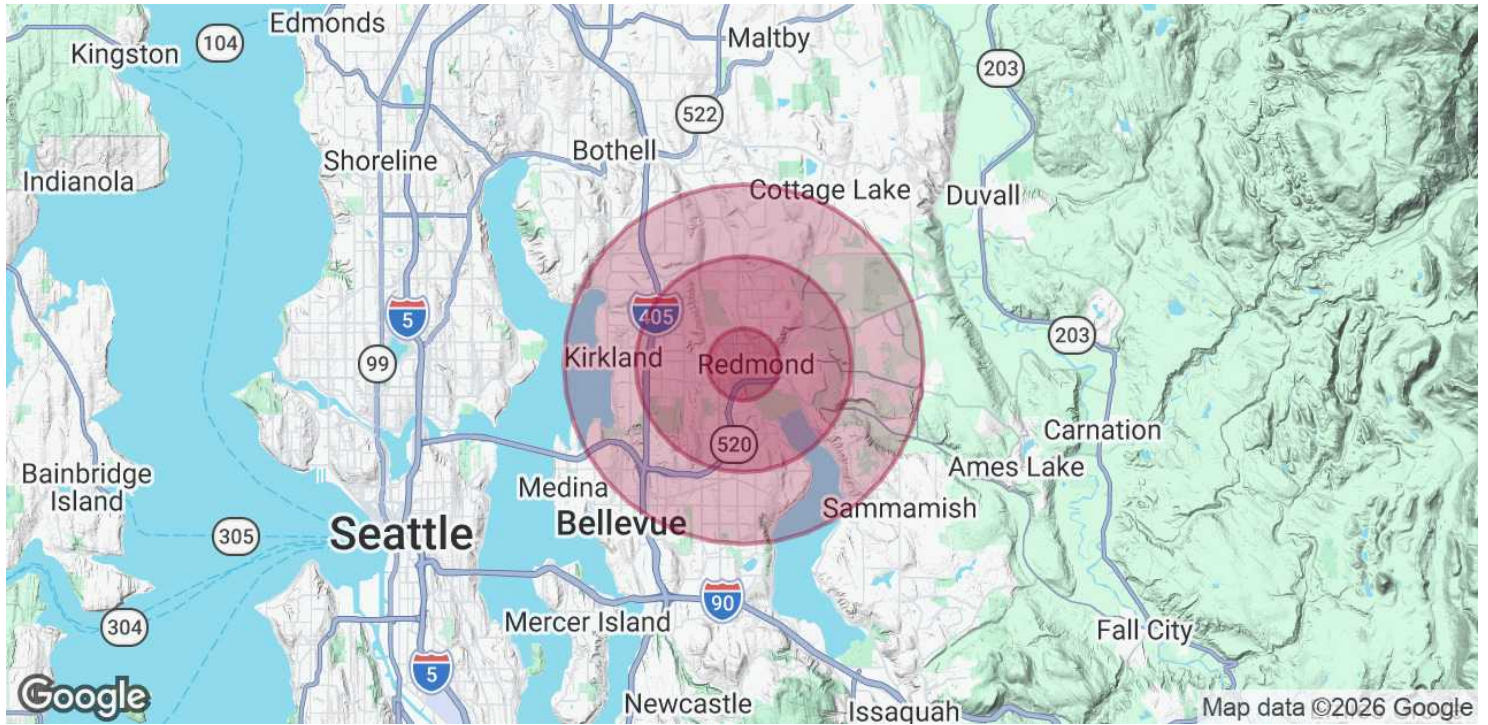
We obtained the information above from sources we believe to be reliable. However, we have not verified its accuracy and make no guarantee, warranty or representation about it. It is submitted subject to the possibility of errors, omissions, change of price, rental or other conditions, prior sale, lease or financing, or withdrawal without notice. We include projections, opinions, assumptions or estimates for example only, and they may not represent current or future performance of the property. You and your tax and legal advisors should conduct your own investigation of the property and transaction.

RADIATE APARTMENTS RETAIL

15808 Bear Creek Pkwy, Redmond, WA 98052



COMMERCIAL REAL ESTATE SERVICES



POPULATION

	1 MILE	3 MILES	5 MILES
TOTAL POPULATION	23,431	106,227	256,275
AVERAGE AGE	35.1	37.3	38.7
AVERAGE AGE (MALE)	34.6	36.2	37.8
AVERAGE AGE (FEMALE)	36.5	38.3	39.4

HOUSEHOLDS & INCOME

	1 MILE	3 MILES	5 MILES
TOTAL HOUSEHOLDS	11,189	43,766	104,999
# OF PERSONS PER HH	2.1	2.4	2.4
AVERAGE HH INCOME	\$172,035	\$214,629	\$219,696
AVERAGE HOUSE VALUE	\$1,024,656	\$1,235,681	\$1,287,615

2023 American Community Survey (ACS)

CONTACT

Kyle Prosser

253.444.3025

kprosser@lee-associates.com

Amanda Hahnemann, CCIM

206.773.2691

ahahnemann@lee-associates.com

We obtained the information above from sources we believe to be reliable. However, we have not verified its accuracy and make no guarantee, warranty or representation about it. It is submitted subject to the possibility of errors, omissions, change of price, rental or other conditions, prior sale, lease or financing, or withdrawal without notice. We include projections, opinions, assumptions or estimates for example only, and they may not represent current or future performance of the property. You and your tax and legal advisors should conduct your own investigation of the property and transaction.