

FOR LEASE
RETAIL/RESTAURANT SPACE
ARBOR BLOCKS

300 8th Avenue North, Suite 108, Seattle, WA 98109

For more information please contact:

LAURA MILLER
laura@gibraltarusa.com
206.351.3573



300 8TH AVENUE NORTH, SUITE 108, SEATTLE, WA 98109

ARBOR BLOCKS



PROPERTY HIGHLIGHTS

- Corner location vacancy in the heart of South Lake Union, located at the base of Arbor Blocks, home to the 2-tower, 384,000 sq ft office space occupied by anchor tech tenants
- Arbor Blocks campus features a tree-lined shared street, prioritized for cyclists and pedestrians, making for an incredibly friendly traffic flow
- 2nd generation space features large storefront windows, high ceilings, ADA restroom, HVAC, shaft for type 1 hood (no hood currently installed)
- 27 public parking stalls (validation program available); monthly garage parking \$300/stall
- Ideal for retail, fitness, health/beauty, cafe, urban market
- 1,381 SF
- Rental Rate \$38/SF/YR plus est. 2026 NNN (\$13.01) = \$5,870.40 per month



89

TRANSIT SCORE



97

WALK SCORE



83

BIKE SCORE



34,605

TOTAL POPULATION



24,610

TOTAL HOUSEHOLDS



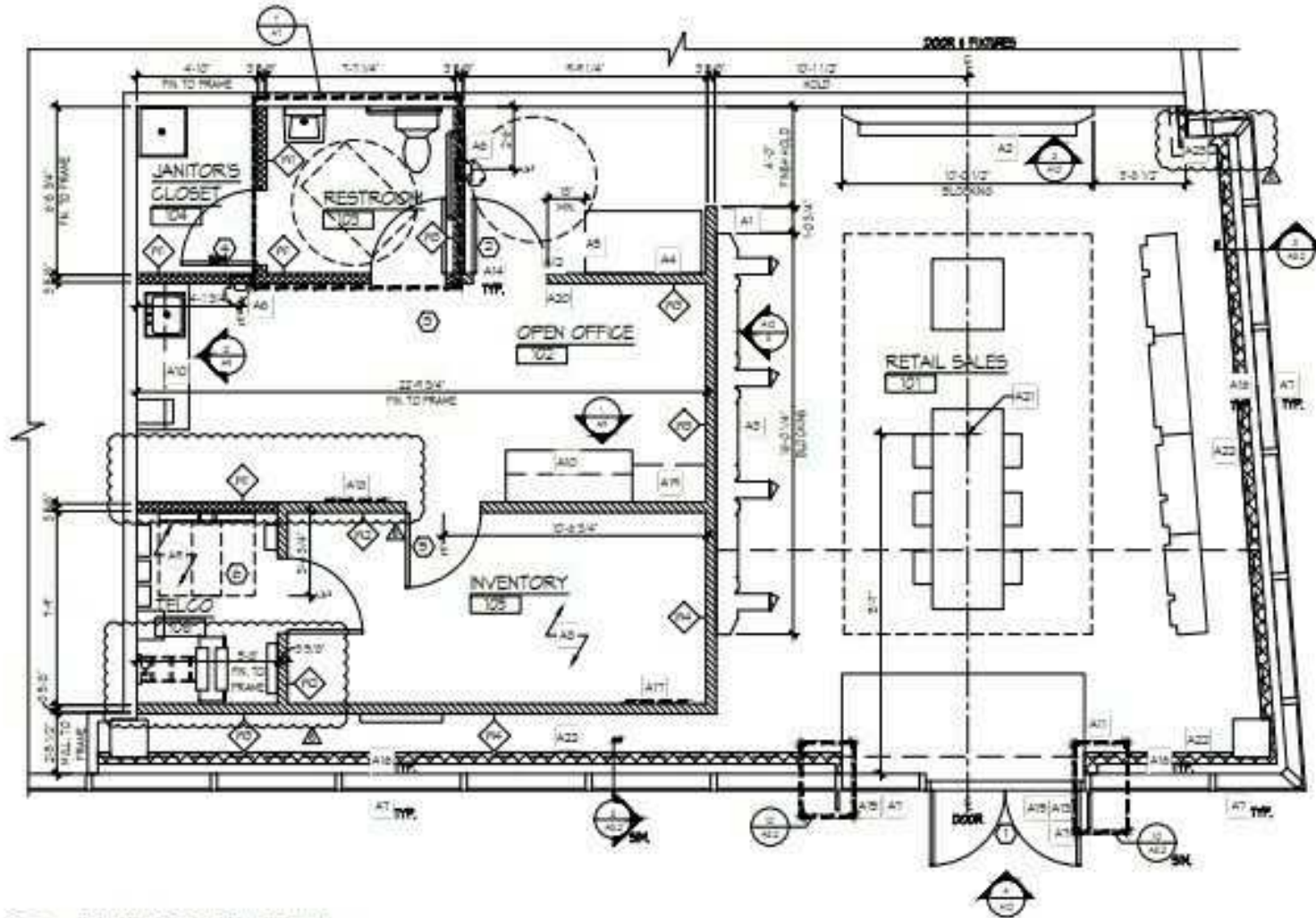
00

MEDIAN INCOME

* Estimated 2024 Demographics based on 1-mile radius

300 8TH AVENUE NORTH, SUITE 108, SEATTLE, WA 98109

ARBOR BLOCKS



8th Avenue N

1 ARCHITECTURAL PLAN
SCALE 1/4"=1'-0"

Harrison Street

300 8TH AVENUE NORTH, SUITE 108, SEATTLE, WA 98109

ARBOR BLOCKS

