

BARTELLS BALLARD

*14,351 SF Former Bartells Retail
Space Available for Lease in Seattle's
Vibrant Ballard Neighborhood*

5601 22ND AVE NW, SEATTLE, WA





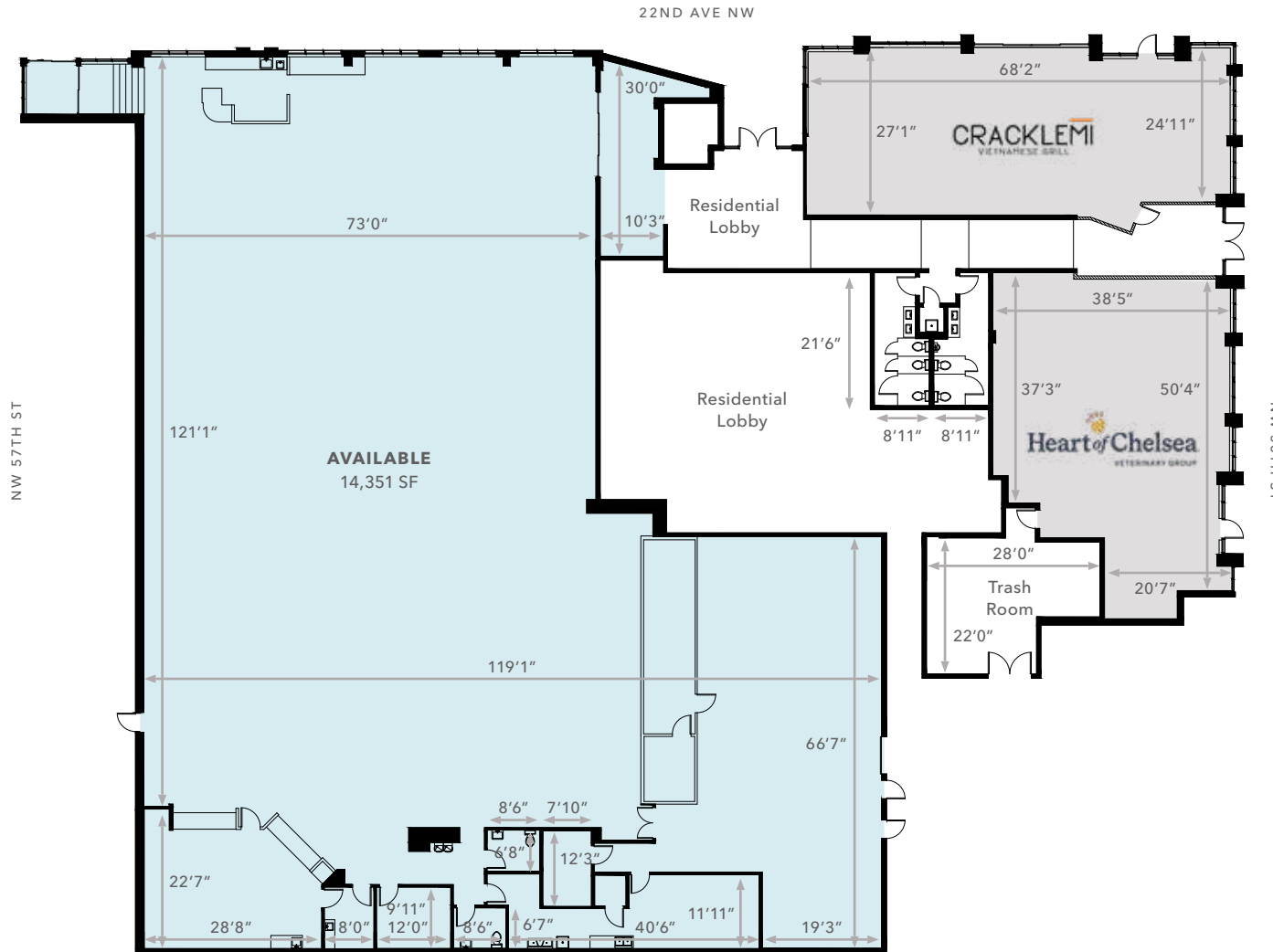
PROPERTY OVERVIEW

ADDRESS	5601 22nd Ave NW
AVAILABLE SF	14,351 SF
LEASE RATE	Call brokers
ESTIMATED NNN RATE	\$8.45/SF
CURRENT/FORMER USE	Drug Store
CURRENT TENANT	Former Bartell Drugs
CO-TENANTS	CrackleMi & Heart of Chelsea Veterinary Group
TRAFFIC COUNT NW Market St & 22nd Ave NW	20,000+ / day

14,351 SF
AVAILABLE

CALL
FOR LEASE RATE

FIRST FLOOR PLAN



14,351 SF

AVAILABLE

CALL

FOR LEASE RATE

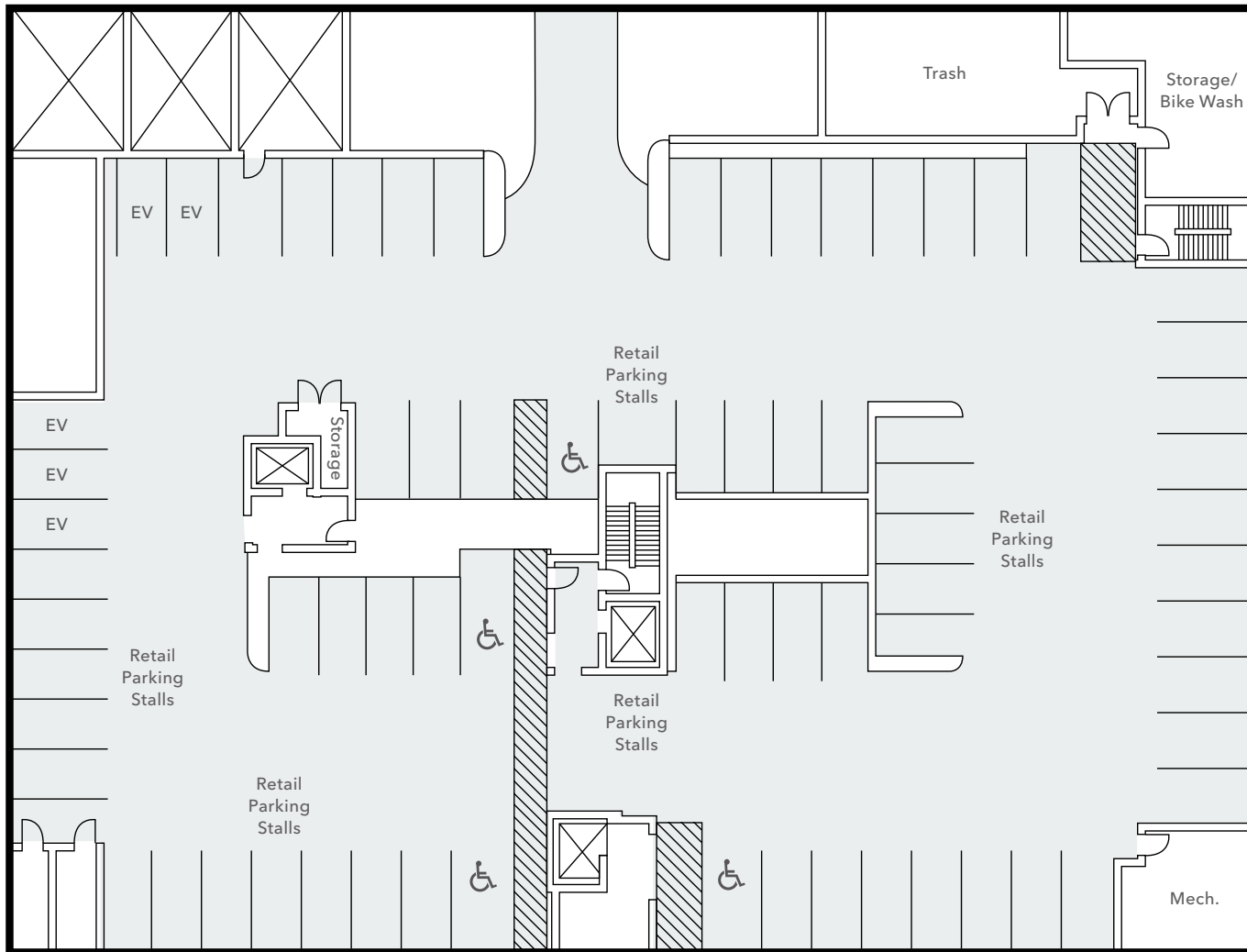
\$8.45/SF

ESTIMATED NNN RATE

NOW

AVAILABLE

PARKING LEVEL 1 FLOOR PLAN



69

RETAIL PARKING STALLS

BARTELLS BALLARD

*Located in the waterfront
Ballard neighborhood, a hub
for amenities and culture*



AVAILABLE FOR LEASE



KIDDER MATHEWS

BARTELLS BALLARD



AVAILABLE FOR LEASE

KIDDER MATHEWS

DEMOGRAPHICS

Population

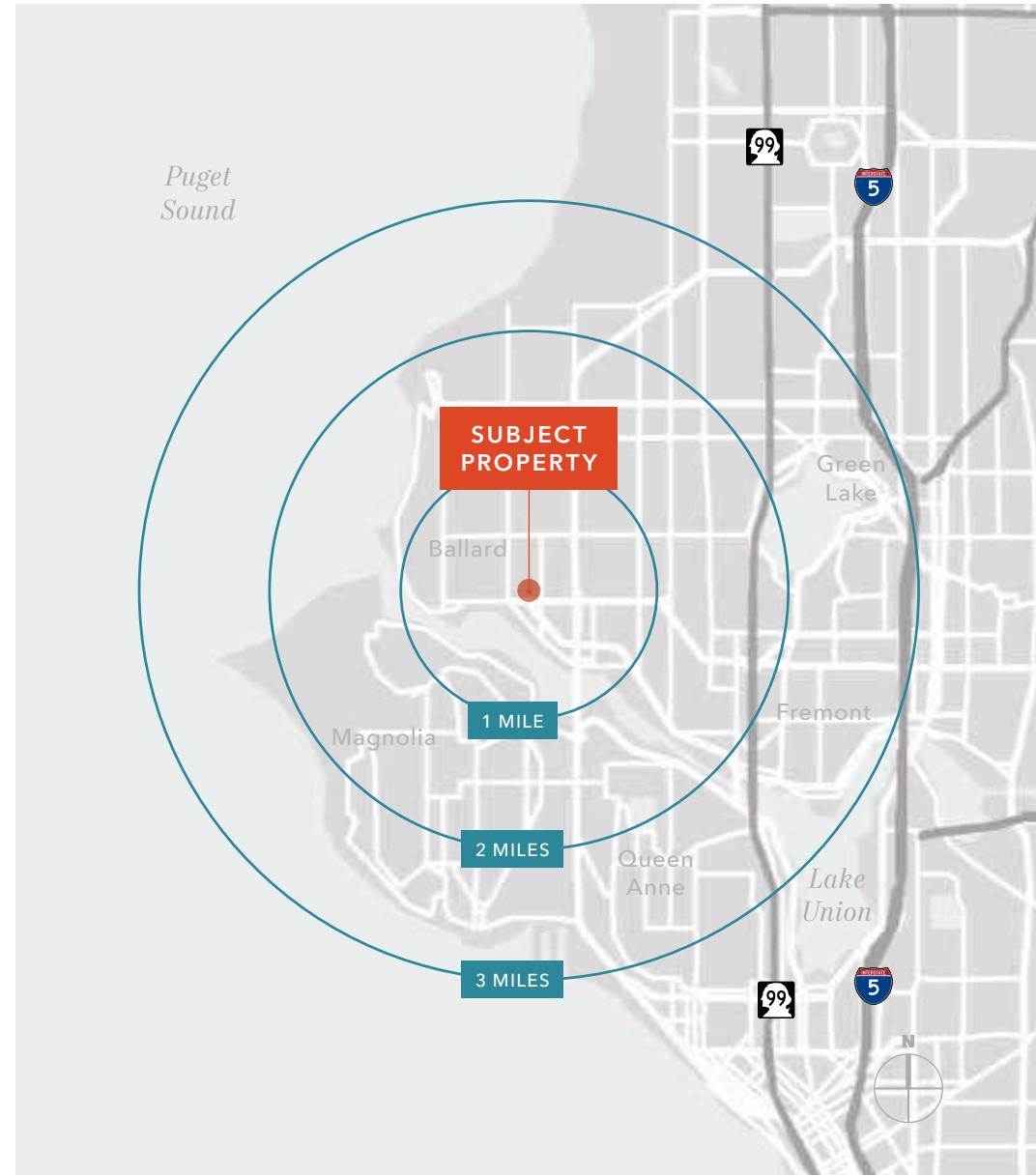
	1 Mile	2 Miles	3 Miles
2025 ESTIMATED	35,114	105,449	189,315
2030 PROJECTED	35,092	105,051	190,770
2020 CENSUS	33,811	100,550	180,531
PROJECTED GROWTH (2025-2030)	-	-	0.2%

Household Income

	1 Mile	2 Miles	3 Miles
2025 MEDIAN	\$152,588	\$163,601	\$160,823
2025 AVERAGE	\$200,806	\$219,469	\$220,162
2030 AVG PROJECTED	\$199,476	\$217,544	\$217,396

Daytime Employment

	1 Mile	2 Miles	3 Miles
TOTAL BUSINESSES	3,033	6,876	12,796
TOTAL EMPLOYEES	19,746	40,686	74,619
EMPLOYEES / BUSINESS	6.5	5.9	5.8



BARTELLS BALLARD

Exclusively leased by

JASON MILLER
206.296.9649
jason.miller@kidderm.com

ROBERT CORON
425.450.1150
robert.coron@kidderm.com

MATT WEISGERBER
425.450.1122
matt.weisgerber@kidderm.com

KIDDER.COM

This information supplied herein is from sources we deem reliable. It is provided without any representation, warranty, or guarantee, expressed or implied as to its accuracy. Prospective Buyer or Tenant should conduct an independent investigation and verification of all matters deemed to be material, including, but not limited to, statements of income and expenses. Consult your attorney, accountant, or other professional advisor.

km **Kidder
Mathews**