



FORMER ABSOLUTE MOBILITY PROPERTY

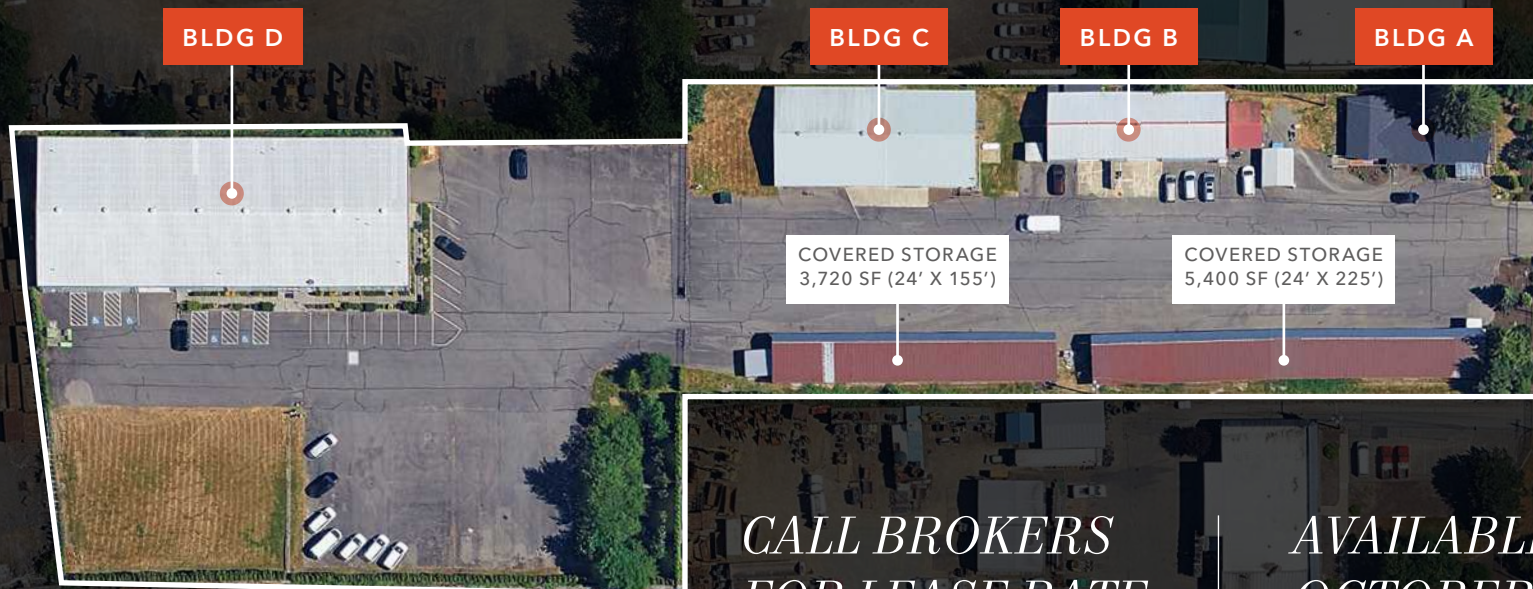
21704 87TH AVE SE, WOODINVILLE, WA

*4 Buildings on 4 AC
Lot Available for Lease
in Woodinville, WA*

FORMER ABSOLUTE MOBILITY PROPERTY

BLDG AVAILABILITY

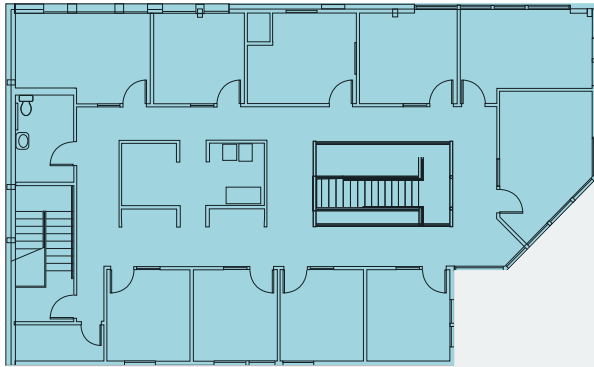
BLDG	Total SF	Office SF	Warehouse SF	Comments
A	2,026	2,026	-	home and/or office structure
B	3,600	200	3,400	14' clear height, 2 oversized GL doors, Mechanics office and restroom, radiant heat
C	5,390	-	5,390	16' clear height, 2 oversized GL doors
D	19,087	6,132 (3,066/floor)	12,955	2 oversized GL doors (16'H x 20'W), clear span, sprinklered, 18' - 22' clear height



*CALL BROKERS
FOR LEASE RATE*

*AVAILABLE ON
OCTOBER 1, 2026*

BUILDING D FLOOR PLAN



19,087 SF

TOTAL BUILDING

6,132 SF

TOTAL OFFICE SPACE

3,066 SF

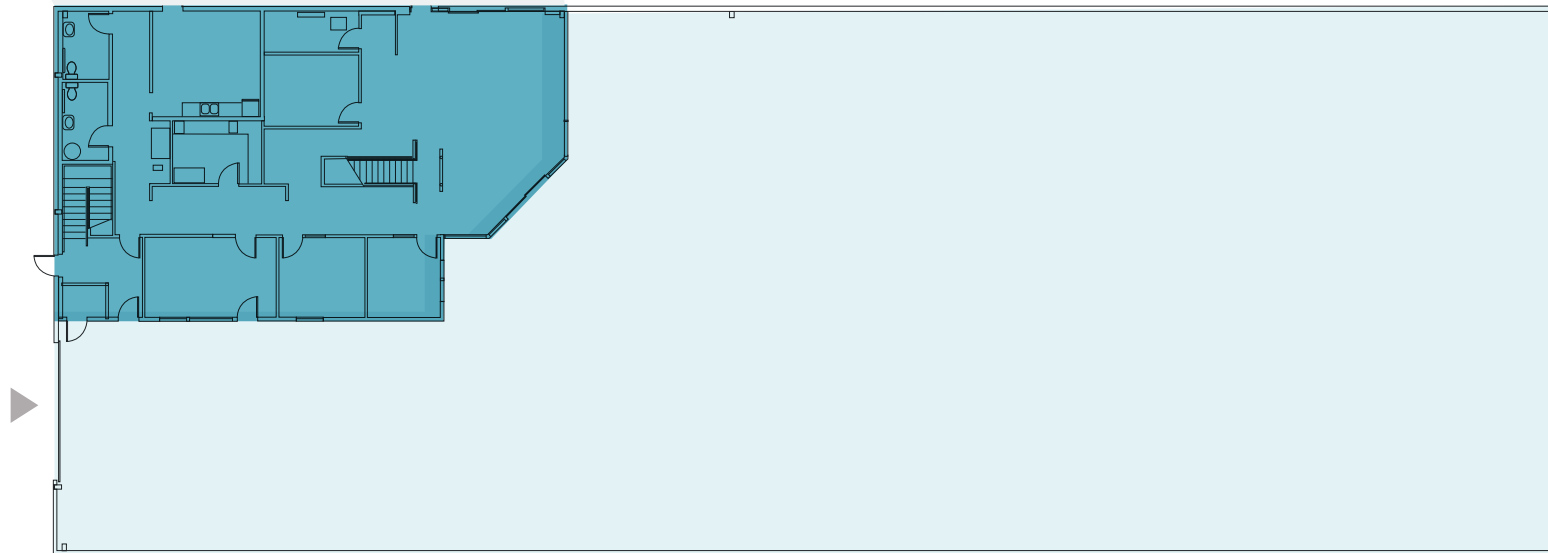
OFFICE / FLOOR

12,955 SF

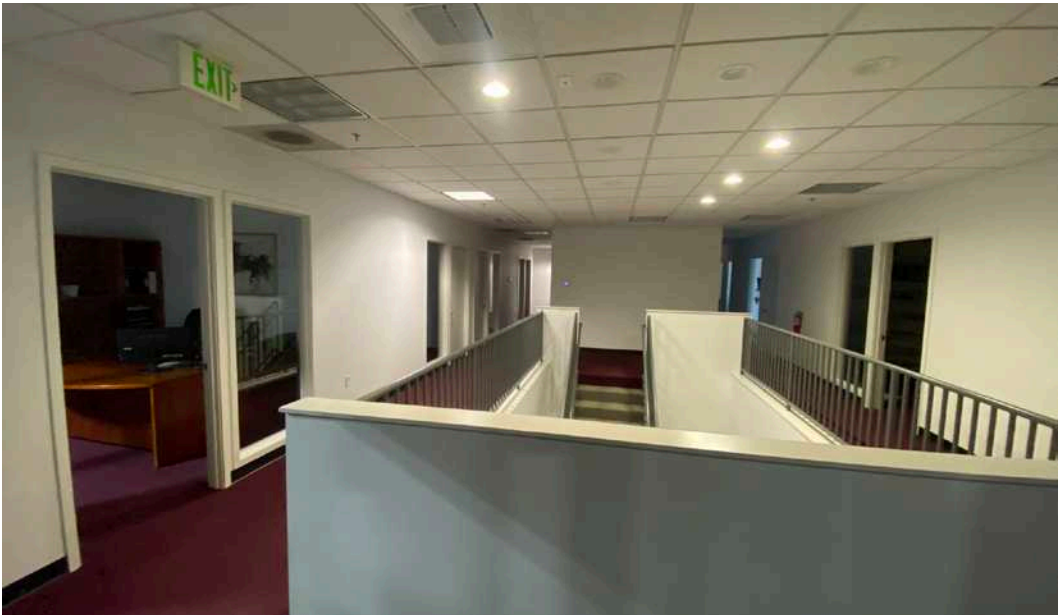
WAREHOUSE

LEGEND

- First Floor Office
- Second Floor Office
- Warehouse
- ▲ Grade-Level Door



FORMER ABSOLUTE MOBILITY PROPERTY



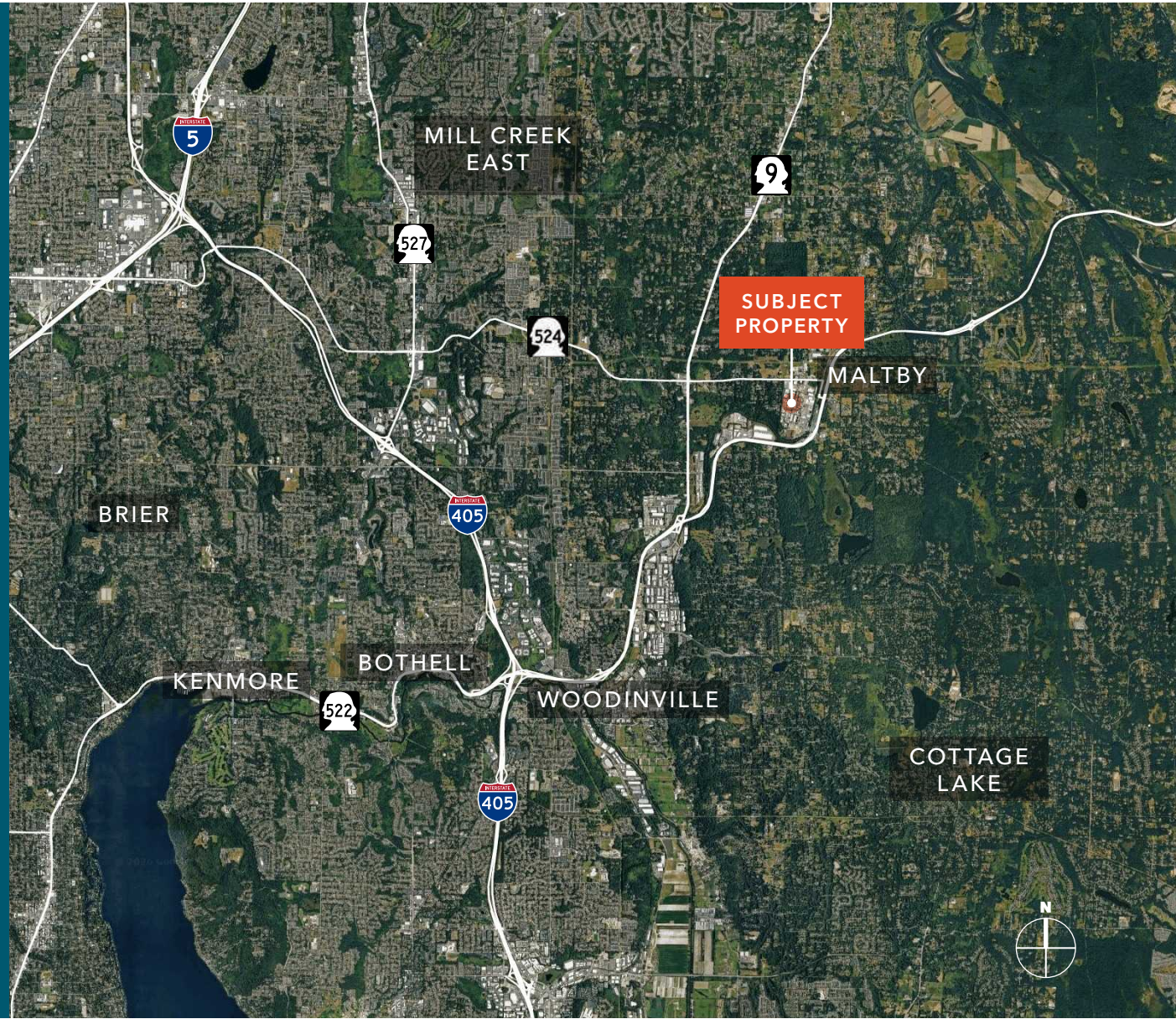
HIGHLY- ACCESSIBLE LOCATION

Minutes to Hwy 522 & Hwy 9

Easy for visitors to locate

24 MIN
KIRKLAND

27 MIN
BELLEVUE CBD





Exclusively listed by

JAMES LEPTICH

Senior Vice President, Shareholder

253.549.5177

james.leptich@kidder.com

ZACH VALL-SPINOSA

Executive Vice President | Shareholder

206.227.8255

zach.vallspinosa@kidder.com

KIDDER.COM



This information supplied herein is from sources we deem reliable. It is provided without any representation, warranty, or guarantee, expressed or implied as to its accuracy. Prospective Buyer or Tenant should conduct an independent investigation and verification of all matters deemed to be material, including, but not limited to, statements of income and expenses. Consult your attorney, accountant, or other professional advisor. All Kidder Mathews designs are the sole property of Kidder Mathews. Branded materials and layouts are not authorized for use by any other firm or person.