

FOR LEASE

SOUTHCENTER WEST, BUILDING B

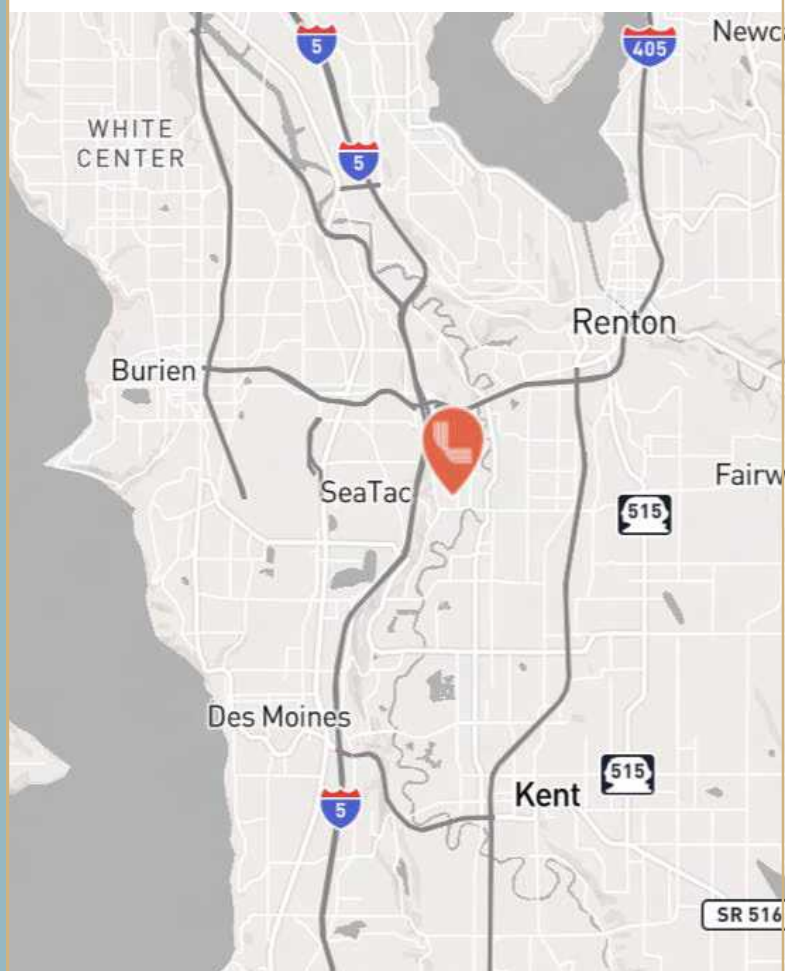
1161 Andover Park West, Tukwila, WA 98188

±9,555 SF



SPECIFICATIONS

Building available	±9,555 SF
Office available	1,179 SF
Clear height	24'
Dock high doors	2
Rail doors	1
Column spacing	24' x 43'
Parking	Ample
Lighting	Energy efficient LED
Power	277/480V
Location	Immediate access to I-5, I-405, & W Valley Hwy
Rate	Contact Brokers
Available	July 1, 2026



LEASING INFO
& CONTACT

Chris Spofford
David Cahill

(425) 890-6963 / chris.spofford@jll.com
(206) 930-5599 / david.cahill@jll.com



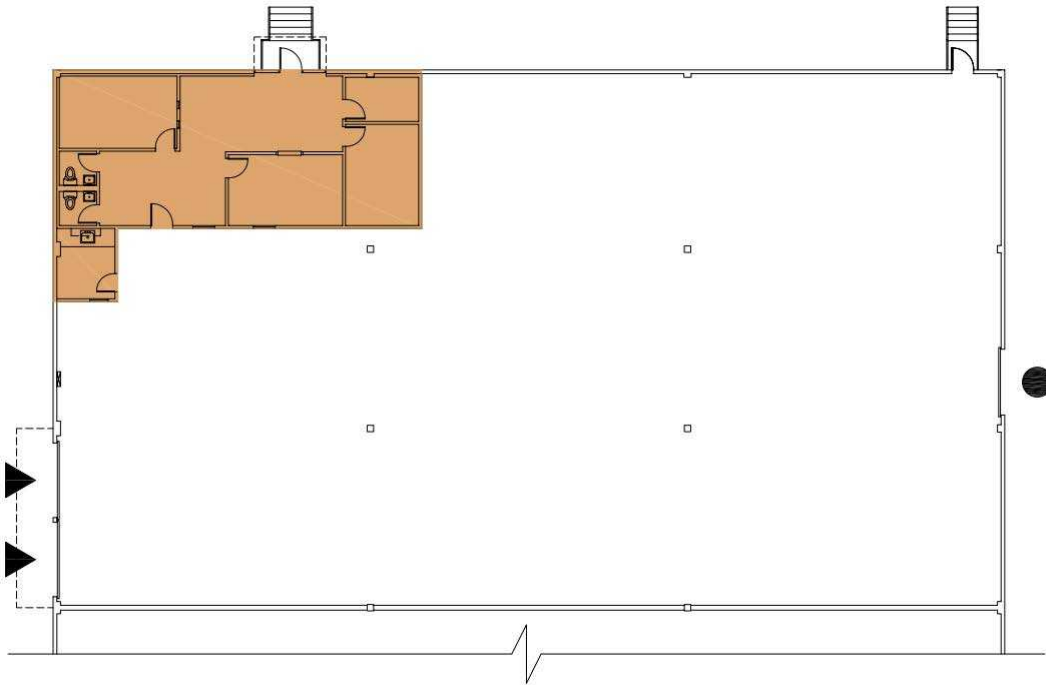
FOR LEASE

Owned and Operated by  LINK

SOUTHCENTER WEST, BUILDING B

1161 Andover Park West, Tukwila, WA 98188

±9,555 SF



LEASING INFO
& CONTACT

Chris Spofford

(425) 890-6961 / chris.spofford@jll.com

David Cahill

(206) 930-5599 / david.cahill@jll.com

