



3922 148TH STREET SE | MILL CREEK, WA

ESPLANADE AT MILL CREEK

RETAIL SPACE FOR LEASE



First Western Properties | 425.822.5522
11621 97th Lane NE Kirkland, WA 98034 | fwp-inc.com

SITE SUMMARY



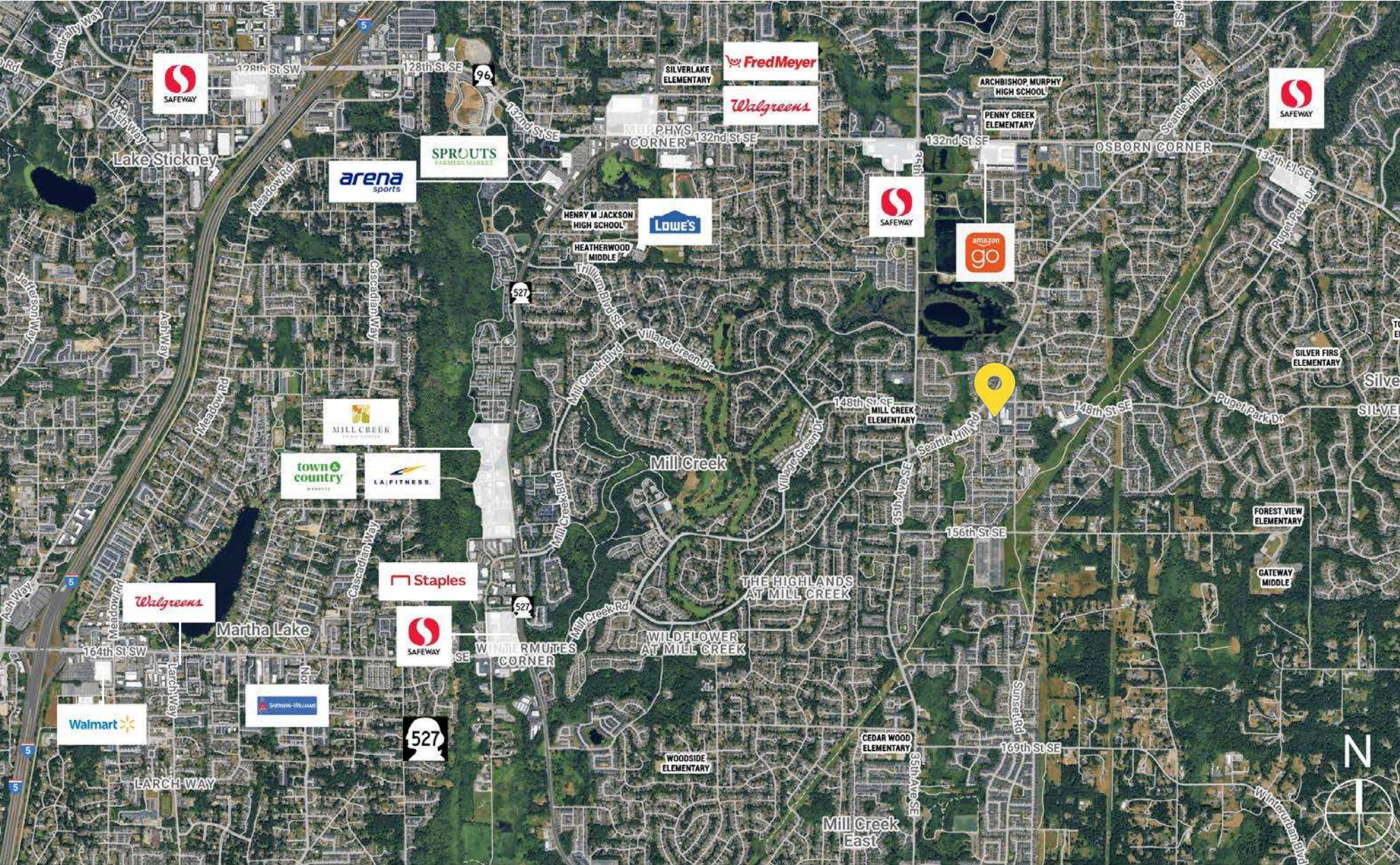
Located in the heart of one of Puget Sound's most affluent cities. The site has excellent visibility along Seattle Hill Road the major NE/SW connector for SR 96 and SR 527. The Everett Clinic will be coming available which presents an excellent opportunity for some rare larger square footage in the area.

| | |
|-----------------------|---|
| Available Now | 945 SF \$21.00 PSF, NNN |
| Coming Available | Former Everett Clinic 6,622 SF \$30.00 PSF, NNN |
| Signage | Pylon Signage Available |
| Total Parking on Site | 144 Stalls |

SITE PLAN

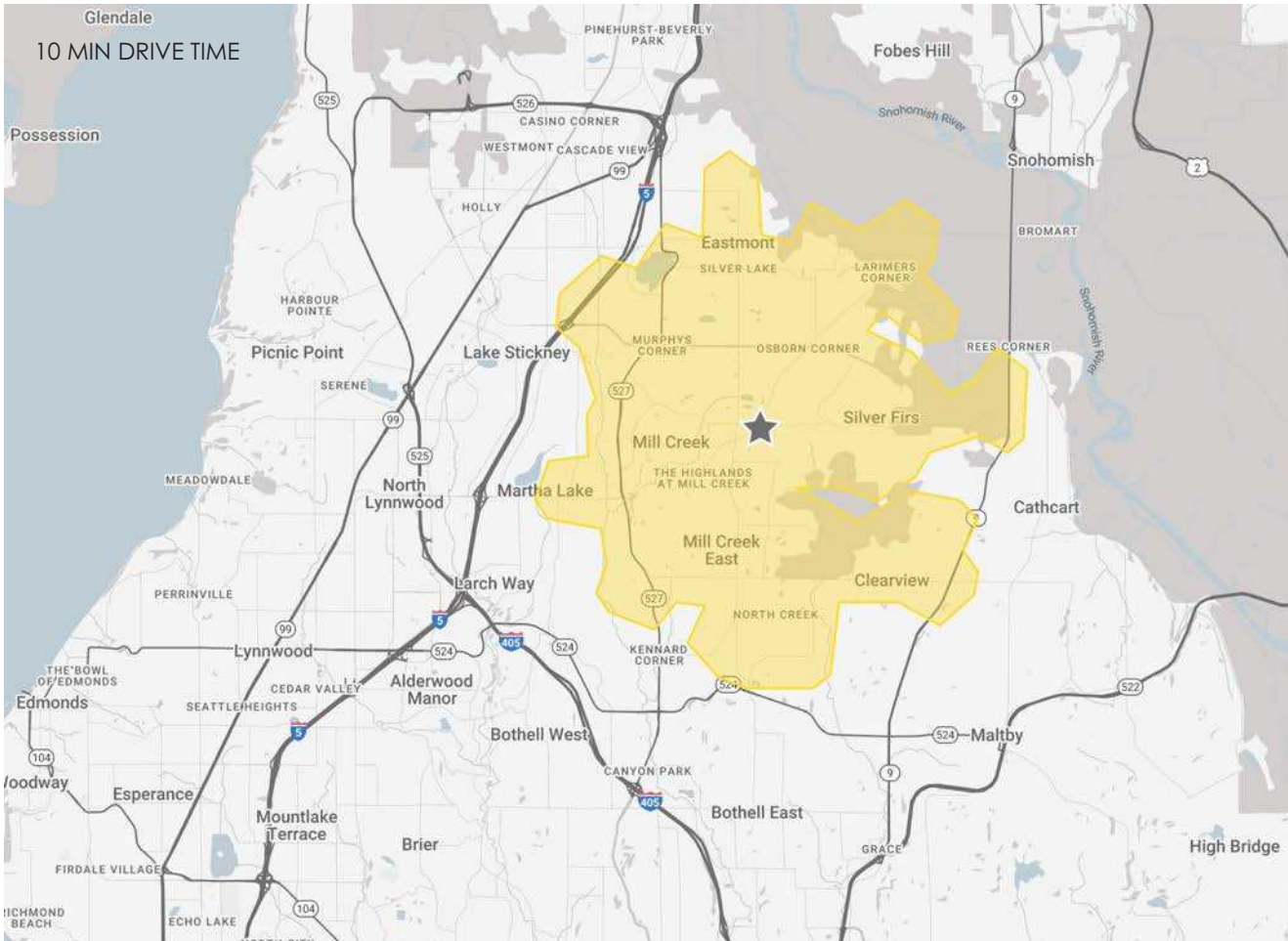


LOCATION AERIAL



DEMOGRAPHICS

Mill Creek, Washington, is a highly desirable community in Snohomish County, balancing natural beauty and an active lifestyle with a robust local economy. This safe and friendly city boasts 10 attractive parks and over 23 miles of nature trails, providing abundant recreational opportunities for its roughly 20,800 residents. Beyond its green spaces, Mill Creek fosters a thriving business environment. While known for its popular Town Center, the city's economic landscape extends to a diverse range of businesses, including retail, healthcare, and professional services. The city actively supports business growth and retention, making Mill Creek an exceptional place where neighborhoods flourish and businesses thrive.



106,989

POPULATION
10 MIN DT



38,365

NO OF HOUSEHOLDS
10 MIN DT



\$185,785

AVERAGE HH INCOME
10 MIN DT



\$795,390

MEDIAN PROPERTY VALUE
10 MIN DT



37.3

YEARS OLD
MEDIAN AGE



\$2.93B

TOTAL NON-RETAIL
EXPENDITURE



43,814

DAYTIME ADJ. POPULATION
10 MIN DT



12,471

SEATTLE HILL ROAD
ADT AT SITE



RELATIONSHIP FOCUSED. RESULTS DRIVEN.

KIRKLAND | TACOMA | PORTLAND | SEATTLE

JAKE THURBER

 425.250.3277

 jthurber@fwp-inc.com

CHANDLER WILLIAMS

 206.518.1170

 chandler@fwp-inc.com

First Western Properties | 425.822.5522 | 11621 97th Lane NE Kirkland, WA 98034 | fwp-inc.com