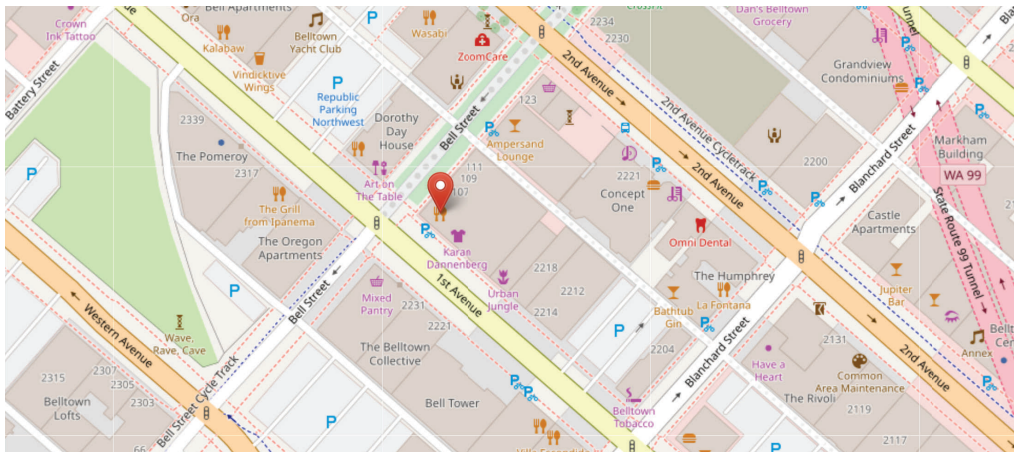


FOR LEASE

RETAIL SPACE
2234 1ST AVENUE | SEATTLE, 98121



PROPERTY FEATURES

- Small retail shop space coming up for lease on 1st Ave in Belltown.
- Square footage: 1,012 main floor, 308 mezzanine. Total: 1,320.
- Rate: \$23.00/SF/YR + NNN (\$15.00/SF/YR)
- Currently occupied by a plant store, please do not disturb tenant.
- Please call brokers for more information and to arrange a tour.

EWING & CLARK
INCORPORATED

**CAMERON
KENT**

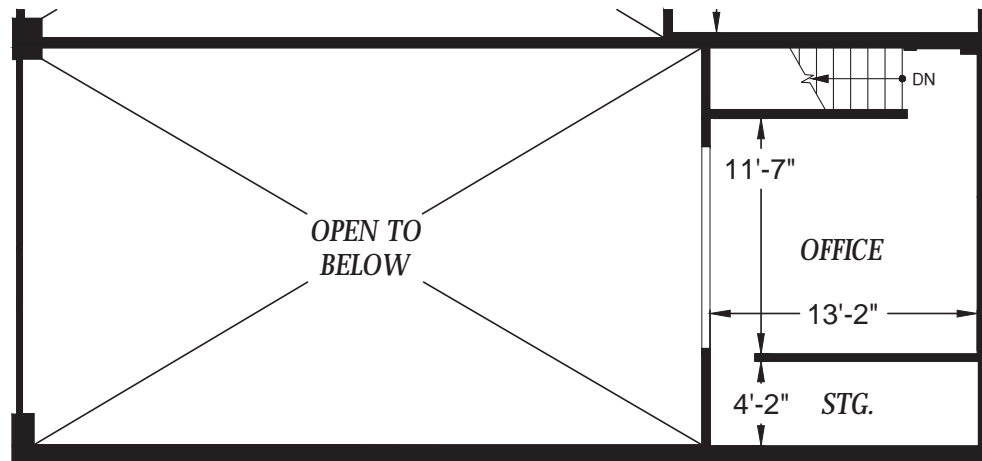
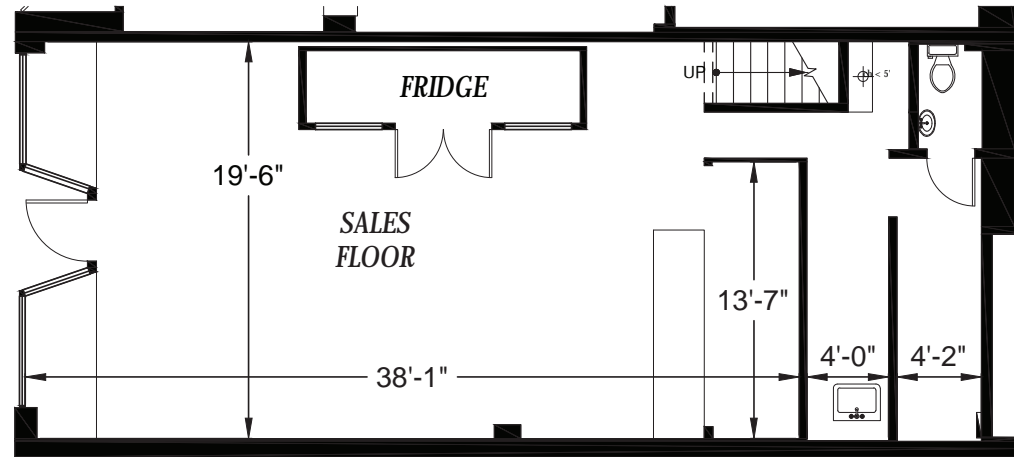
206.838.7737
ckent@ewingandclark.com

**TOM
GRAFF**

206.295.1445
tomgraff@ewingandclark.com

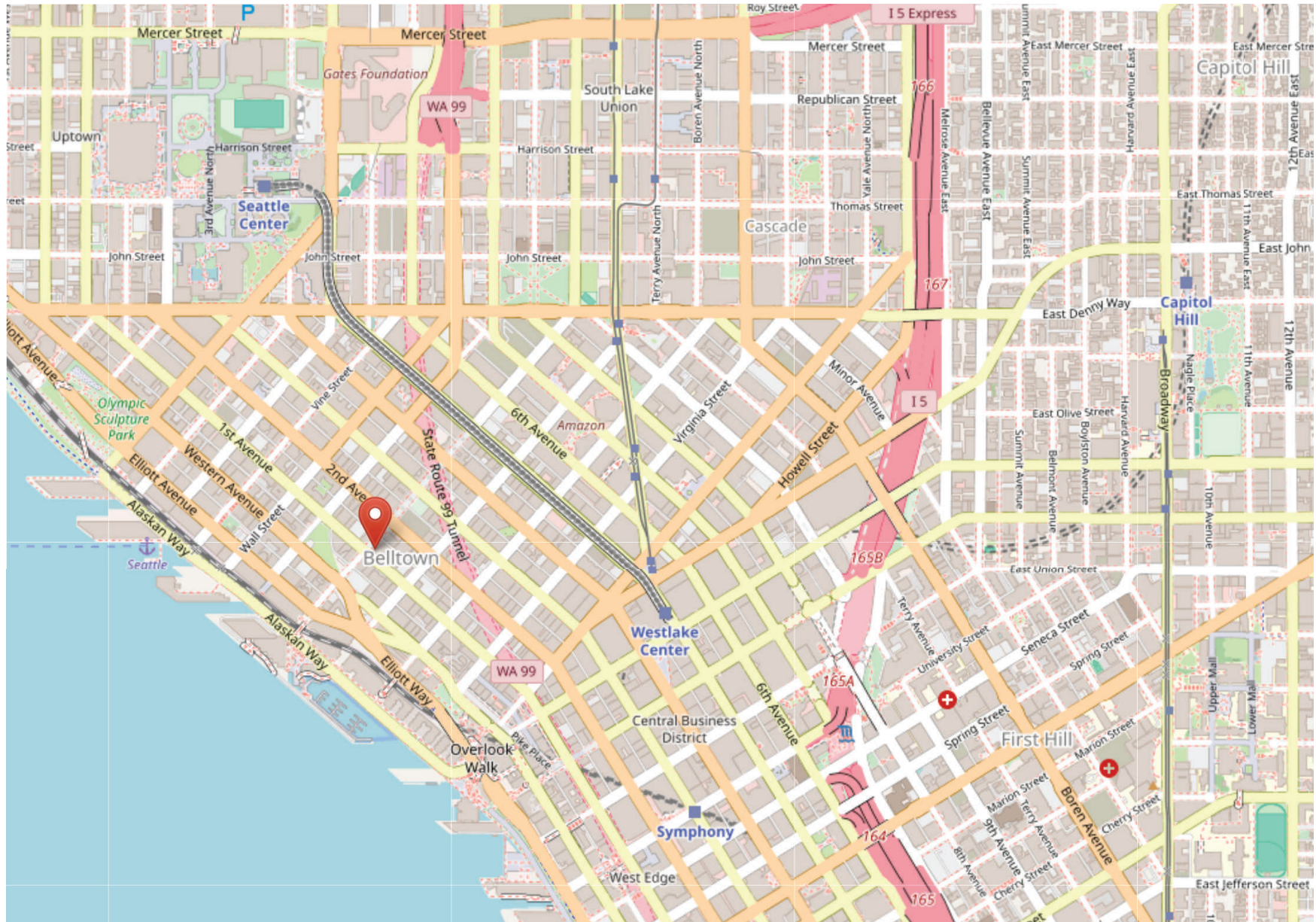
FLOOR PLAN

2234 1ST AVENUE | SEATTLE, 98121



AERIAL MAP

2234 1ST AVENUE | SEATTLE, 98121



**CAMERON
KENT**

206.838.7737
ckent@ewingandclark.com

**TOM
GRAFF**

206.295.1445
tomgraff@ewingandclark.com