

FOR LEASE

302 E SMITH ST

KENT, WA 98030



Property Overview

1,395 SF

BUILDING SIZE

12,485 SF

LAND SIZE

\$65,000

PER YEAR

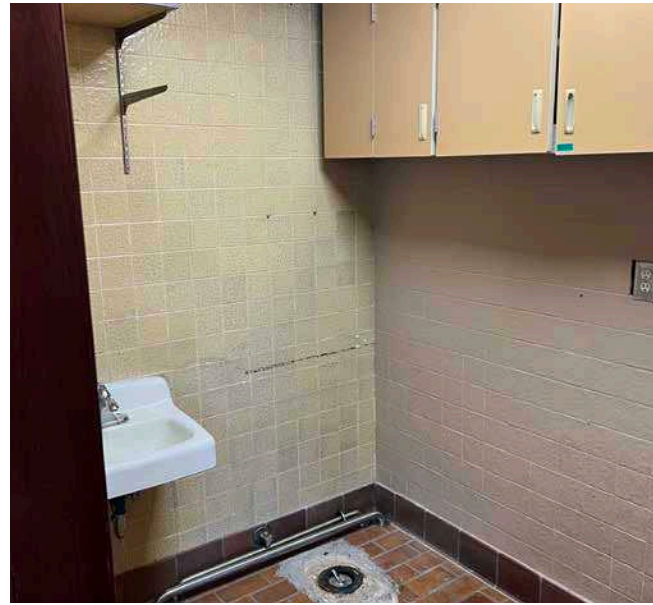
CONTACT

BROKERS FOR MORE DETAILS



NEARBY TENANTS





302 E SMITH ST



DEMOGRAPHICS

POPULATION

	5 Min	10 Min	15 Min
2010 CENSUS	33,865	91,850	224,333
2020 CENSUS	39,253	106,035	259,396
2025 ESTIMATED	40,854	110,056	261,531
2030 PROJECTED	41,591	109,094	256,211

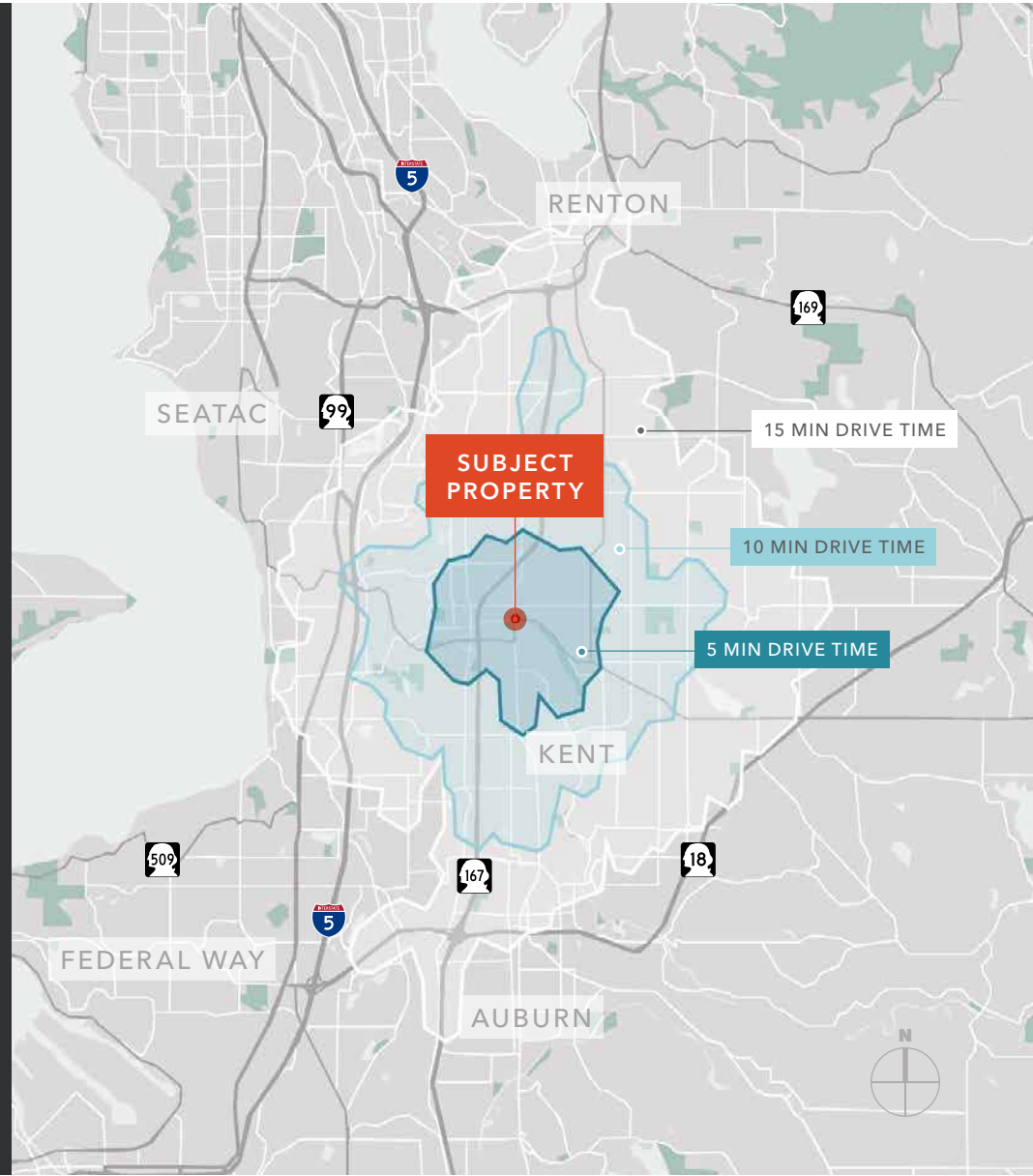
MEDIAN AGE & GENDER

	5 Min	10 Min	15 Min
MEDIAN AGE	33.5	35.1	35.8
% FEMALE	49.1%	49.4%	49.7%
% MALE	50.9%	50.6%	50.3%

HOUSEHOLD INCOME

	5 Min	10 Min	15 Min
2025 MEDIAN	\$81,764	\$99,700	\$101,274
2030 MEDIAN PROJECTED	\$82,916	\$100,019	\$101,380
2025 AVERAGE	\$103,140	\$126,061	\$128,782
2030 AVERAGE PROJECTED	\$104,385	\$126,672	\$129,151

Data Source: ©2026, Sites USA





Exclusively listed by

TIM WEBER

Executive Vice President
206.650.0391
tim.weber@kidder.com

BLAKE WEBER

Senior Vice President
206.898.1231
blake.weber@kidder.com

NED WHALEN

Senior Vice President
206.491.5998
ned.whalen@kidder.com

DON WHITTLES

Senior Vice President
253.208.2257
don.whittles@kidder.com

KIDDER.COM