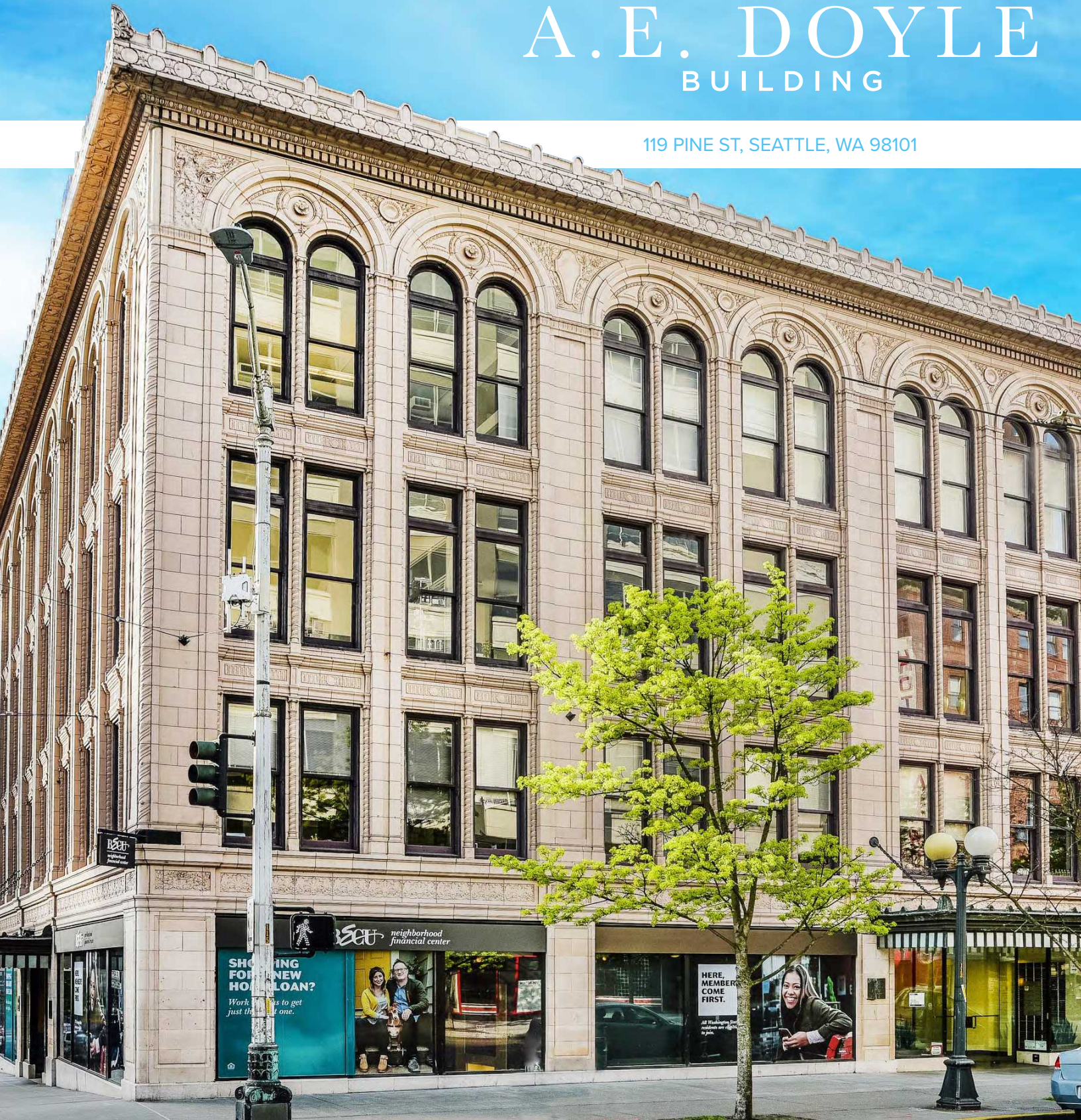


# THE A.E. DOYLE BUILDING

119 PINE ST, SEATTLE, WA 98101



# THE A.E. DOYLE BUILDING



## Property Highlights

- Full Floor Opportunity
- Divisibility Options
- Furniture Available
- Secure Garage & Bike parking
- Renovated Restrooms, Building Showers and Common Area

*This 4-story historic landmark built in 1919 features character-rich details with an airy and bright updated office and retail spaces*



**NEWMARK**

**CAVAN O'KEEFE**  
206.395.2903  
cavan.okeefe@nrmk.com

**LUKE SIKMA**  
206.607.6599  
luke.sikma@nrmk.com

# THE A.E. DOYLE BUILDING

## Availabilities

### Full Floor Options:

**Floor 2**  8,825 RSF Rare full floor availability with new finishes and potential furniture.

### Floor 2 Demising Options:

**Suite 200** 2,496 RSF Open space with three private and a conference room

**Suite 220** 4,790 RSF Large open space with two private offices and a kitchenette

**Suite 230** 1,550 RSF Open space with two offices and a kitchenette

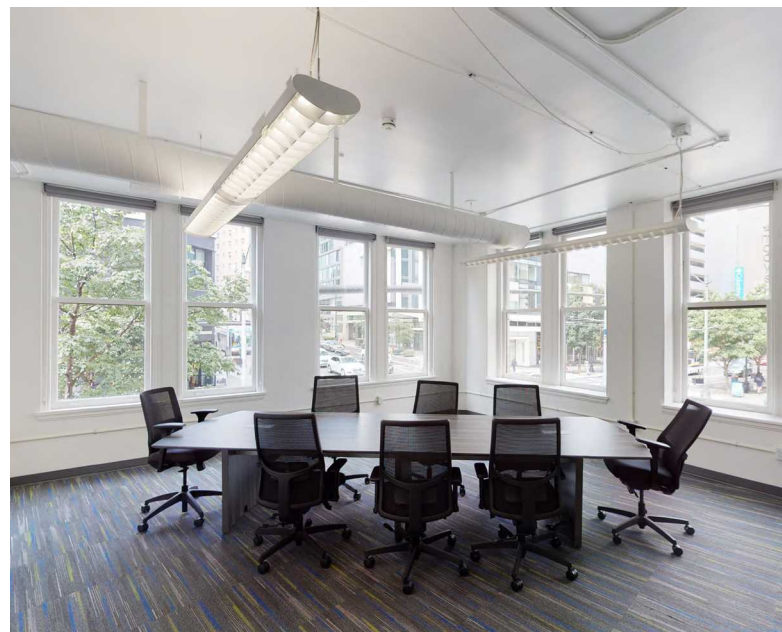
### Floor 3:

**Suite 300**  1,460 RSF Heavy private office build out with reception.

**Suite 305** 2,598 RSF Available now

**Suite 307** 883 RSF Open office space

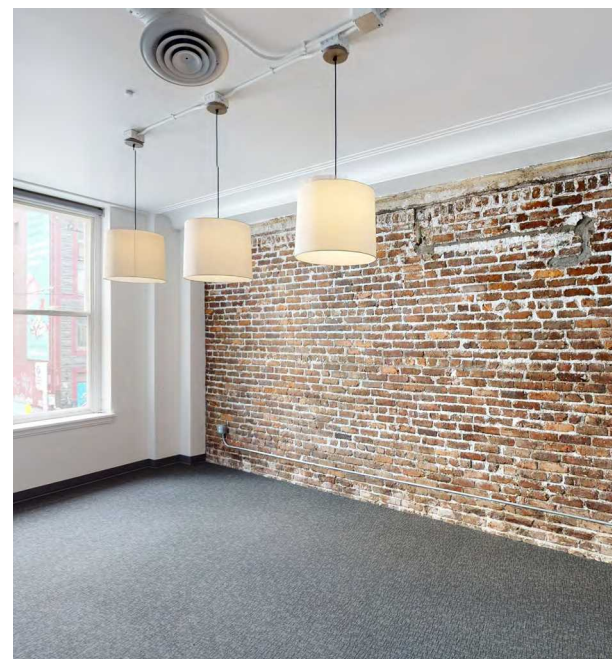
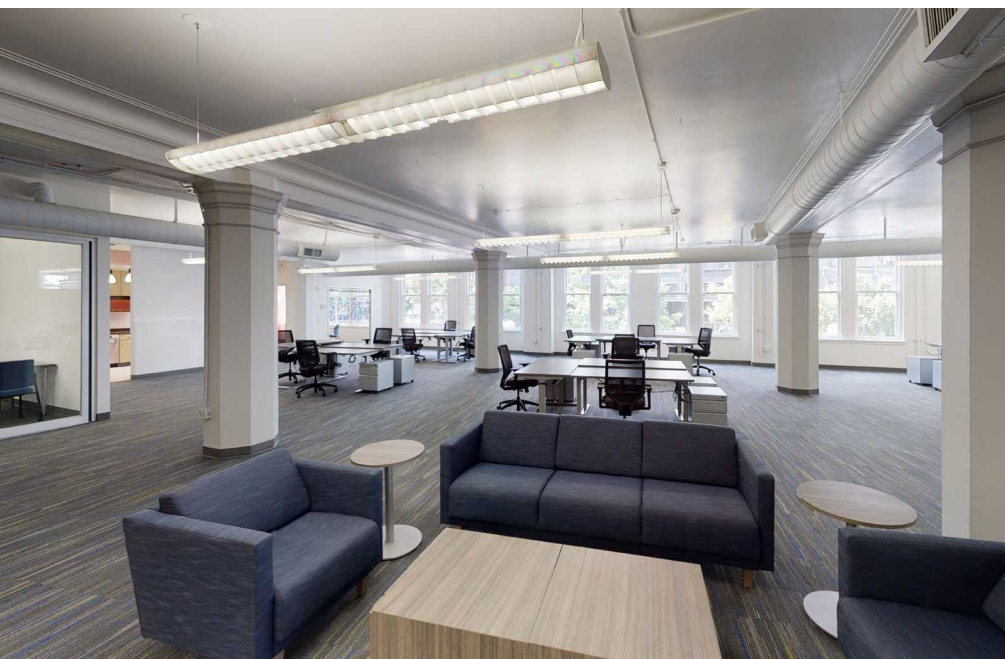
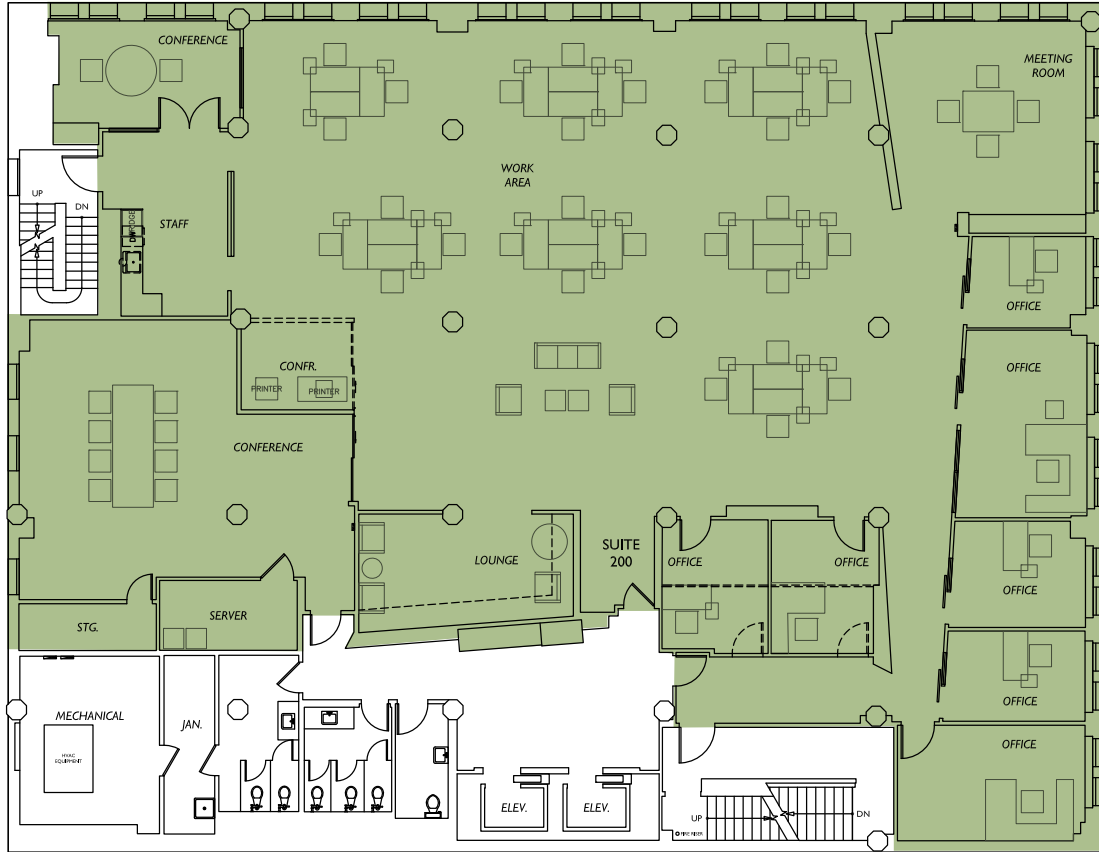
Updated Building Lobby



# Full Floor 2

8,825 RSF

THE  
**A.E. DOYLE**  
BUILDING






**NEWMARK**

**CAVAN O'KEEFE**  
206.395.2903  
cavan.okeefe@nrmk.com

**LUKE SIKMA**  
206.607.6599  
luke.sikma@nrmk.com

# Floor 2

8,836 RSF




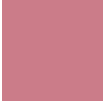
-  **Suite 230**  
1,550 RSF
-  **Suite 220**  
4,790 RSF
-  **Suite 200**  
2,496 RSF

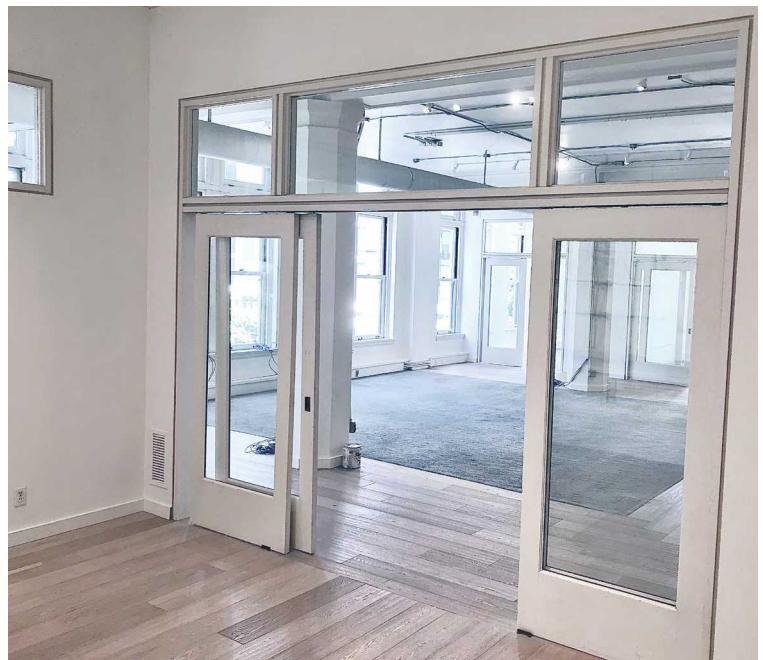


# Floor 3

1,460 RSF

THE  
**A.E. DOYLE**  
BUILDING

-  Suite 300  
1,460 RSF 
-  Suite 305  
2,598 RSF
-  Suite 307  
883 RSF



**NEWMARK**

**CAVAN O'KEEFE**  
206.395.2903  
cavan.okeefe@nmrk.com

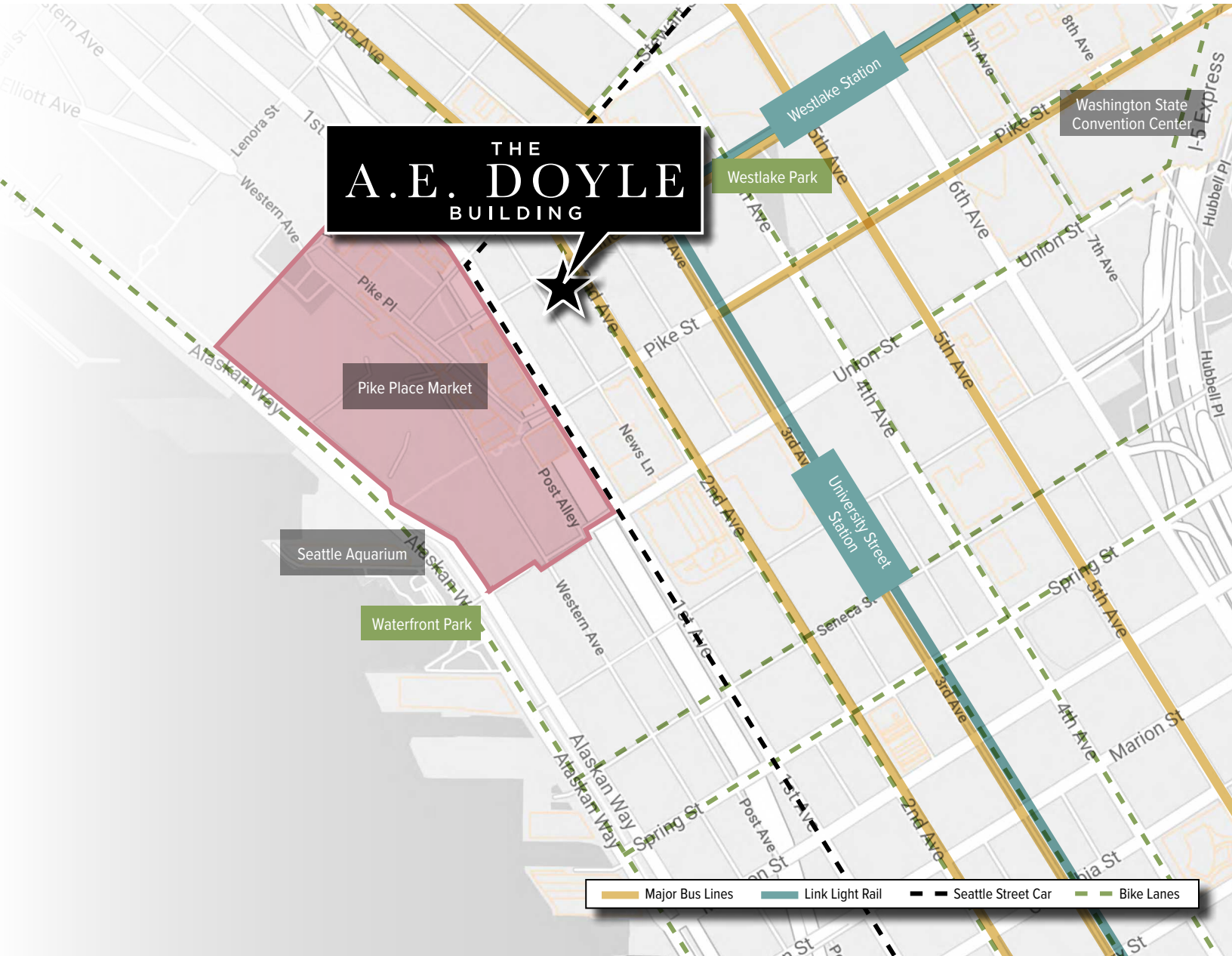
**LUKE SIKMA**  
206.607.6599  
luke.sikma@nmrk.com

MORE THAN  
**50**  
RESTAURANTS  
within 3 blocks

MORE THAN  
**10**  
COFFEE SHOPS  
within 3 blocks

WALKER'S  
PARADISE  
**99**

RIDER'S  
PARADISE  
**100**



## Neighborhood / Market Summary

- Steps away from Amazon, 2200 Westlake (Whole Foods) and the downtown retail core
- Access to the South Lake Union Transit, Link Light Rail and main line buses within blocks
- Direct access to Pike Place Market

THE  
A.E. DOYLE  
BUILDING



HERE,  
MEMBERS  
COME  
FIRST.  
All Washington State  
residents are eligible  
to join.

**CAVAN O'KEEFE**  
206.395.2903  
cavan.okeefe@nrmk.com

**LUKE SIKMA**  
206.607.6599  
luke.sikma@nrmk.com

**NEWMARK**

The distributor of this communication is performing acts for which a real estate license is required. The information contained herein has been obtained from sources deemed reliable but has not been verified and no guarantee, warranty or representation, either express or implied, is made with respect to such information. Terms of sale or lease and availability are subject to change or withdrawal without notice. 18-1023