

OFFICE SUITES FOR LEASE



Images are for illustration purposes only

📍 1334 N Whitman Lane
Liberty Lake, WA 99019

Offered at

\$2.10 PSF, NNN
Est. CAM \$800 Per Month

Parcel: 55152.9190

Nice multi-tenant, professional office/medical building located in Liberty Lake with excellent visibility from Interstate 90 with traffic counts of 79,000 cars per day. The building offers good parking and a great tenant mix. Building amenities include an elevator, interior reader board and beautiful park like setting including a waterfall.

Suite 140 is 1,381 square feet and features a glass front entry door, nice built in reception area, waiting room, 2 built in work stations, 6 private offices and lots of natural light. For added convenience and privacy, the suite boasts a separate rear entry/exit.



ROB KANNAPIEN, CCIM

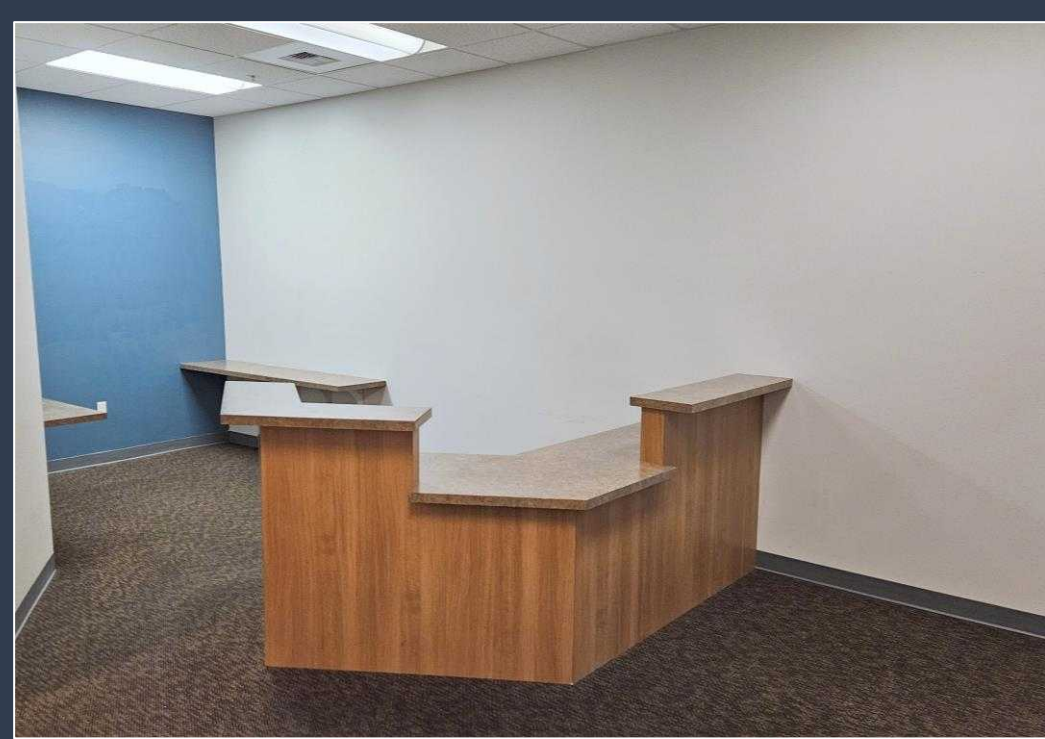
208.704.3832

robk@ccim.net

CCIMTEAM.COM



**COLDWELL BANKER
COMMERCIAL**



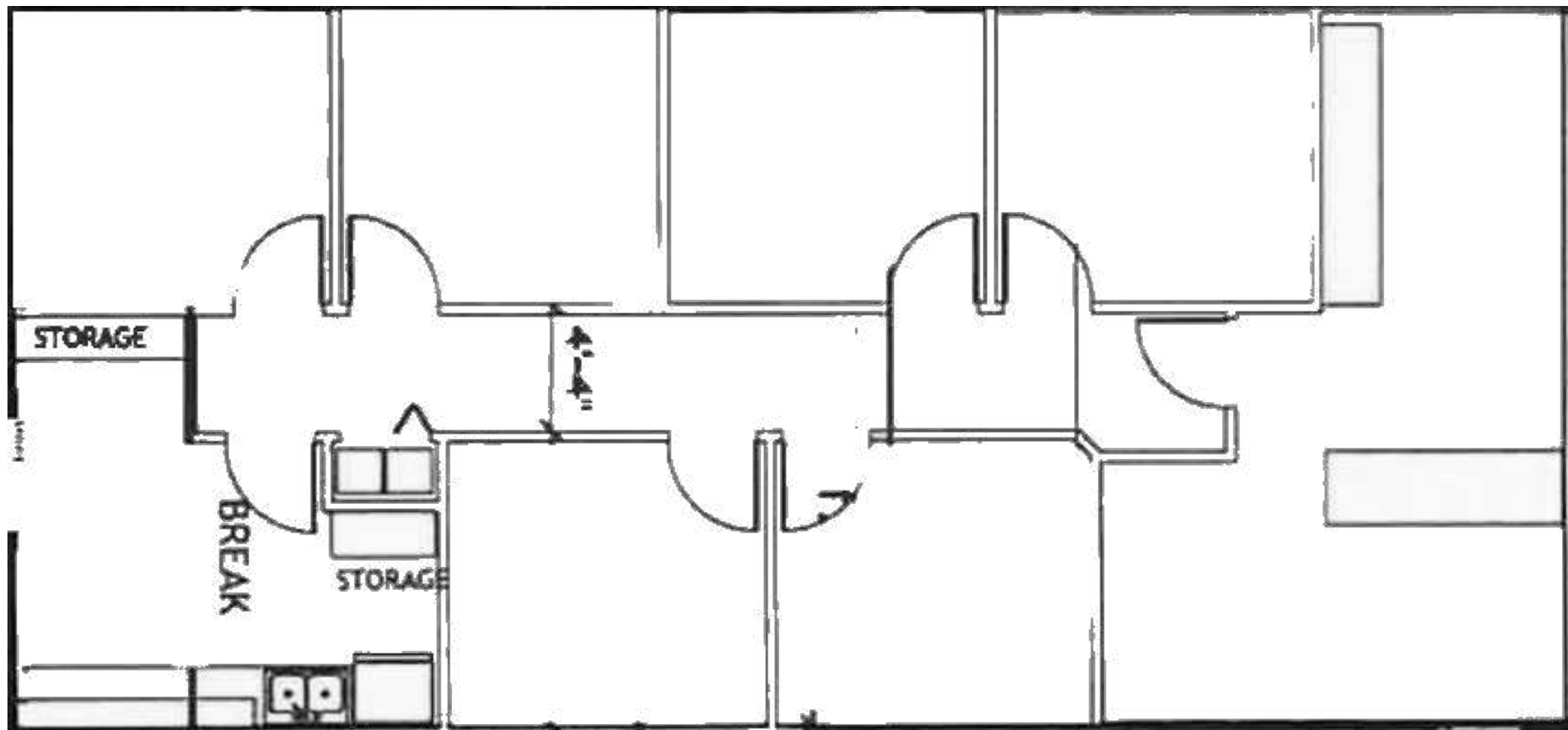
**COLDWELL BANKER
COMMERCIAL**

SCHNEIDMILLER
REALTY

1334 N Whitman Lane, Suite 140 | Liberty Lake, WA 99019

FLOOR PLAN

Images or illustrations are for visual purposes only



ROB KANNAPIEN, CCIM

208.704.3832

robk@ccim.net

CCIMTEAM.COM



**COLDWELL BANKER
COMMERCIAL**

CLOSE UP

Images or illustrations are for visual purposes only

The MANE Collective



gentiva 

RANDALL
+ HURLEY

- Liberty Lake
Family Dentistry
- Liberty Lake
Children's Academy
Nancy Animal Center

LabCorp
Liberty Lake Therapy
MDRN Fitness
Level Up Wellness
Dermatology
KVINNA
Sarah Hamilton Face
Valley OBGYN
Edward Jones



ROB KANNAPIEN, CCIM

208.704.3832

robk@ccim.net

CCIMTEAM.COM



COLDWELL BANKER
COMMERCIAL

NEARBY BUSINESSES

Images or illustrations are for visual purposes only



- Crown Home Services
- Amphenol Network Services
- Achieve Today Homeschool
- BofA Work
- Manga Catering

GEORGE GEE
A GEE AUTOMOTIVE COMPANY

Mercedes-Benz
of Spokane

Porsche Spokane

Appleway Avenue

Inerstate 90

- Family Medicine
- Indigo Multi-Care

- Liberty Lake Family Dentistry
- Liberty Lake Children's Academy
- Legacy Animal Center

- nomnom**
- CENEX**
- Barlows Restaurant**
- Starbucks Coffee**
- Great Clips**
- SAFeway**

TOPGOLF

THE HOME DEPOT

- The Mat
- Brothers Office Pizzeria

- Mint Condition Dental
- Fuiyama

- F5 Networks
- The MANE Collective
- Bangkok Thai

WAKE UP EARLY
The Coffee & Espresso

TIRE RAMA
More Than Just a Tire Store

O'Reilly
AUTO PARTS

WINNER BANK

Bank of America

Country Vista Drive

Trailhead Golf Course

Windermere
REAL ESTATE

LEGACY VILLAS
APARTMENTS

- Lorraine Fine Jewelry
- Eat This Nutrition
- BocoPop
- Liberty Lake Veterinary

- Liberty Lake Veterinary
- Crazy Beagle
- Country Vista Car Wash

- Oral Surgery Plus

HORIZON
CREDIT UNION

Chevron

1334 N Whitman Lane
Liberty Lake, WA 99019

ROB KANNAPIEN, CCIM
208.704.3832
robk@ccim.net
CCIMTEAM.COM

Data is deemed reliable. No warranty or representation, expressed or implied, is made by Coldwell Banker Schneidmiller Realty, its agents or its employees as to the accuracy of the information contained herein. All information furnished is from sources deemed reliable and submitted subject to errors, omissions, change of terms and conditions, prior sale without notice, lease or financing, or withdrawal without notice. No one should rely solely on the above information, but instead should conduct their own investigation to satisfy themselves. All critical measurements shall be done by Lessee or Buyer. All Images are for illustration or visual purposes only.



SCHNEIDMILLER REALTY
2000 Northwest Blvd
Coeur d'Alene, ID 83814