

# OFFICE SUITES FOR LEASE



Images are for illustration purposes only

📍 1334 N Whitman Lane  
Liberty Lake, WA 99019

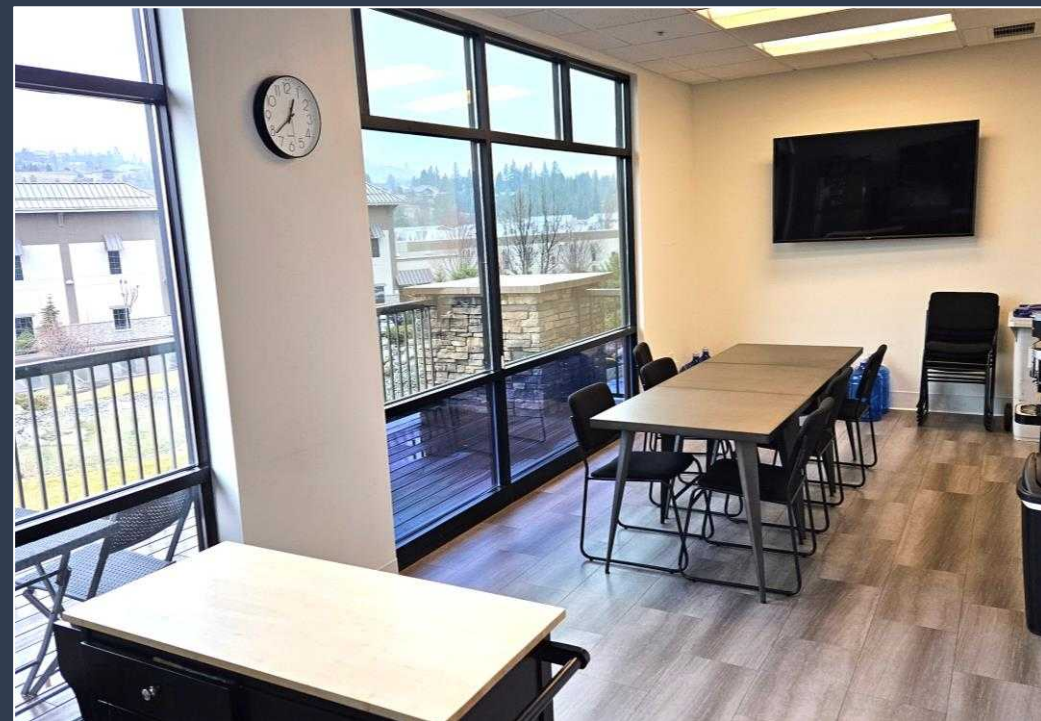
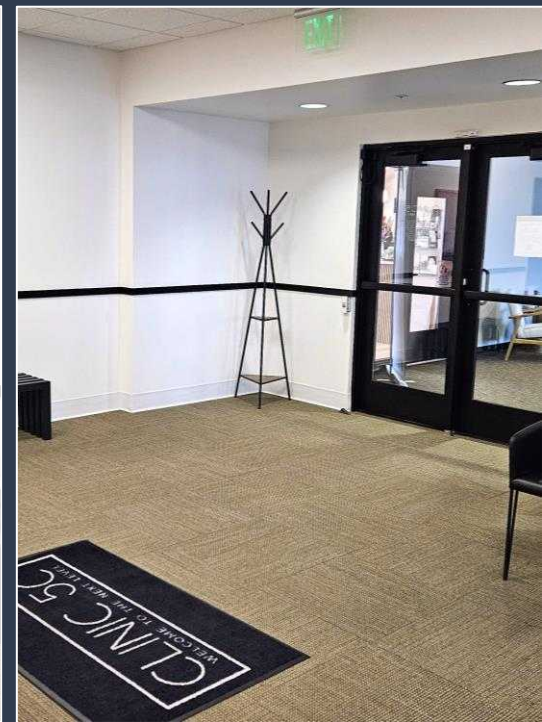
Offered at

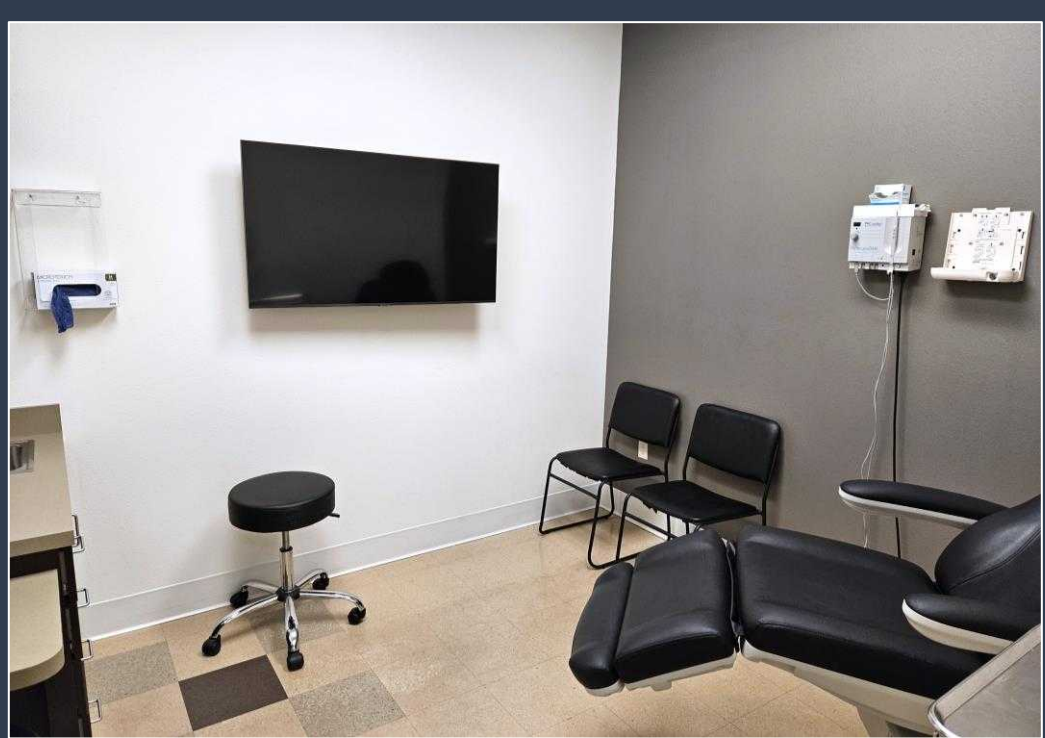
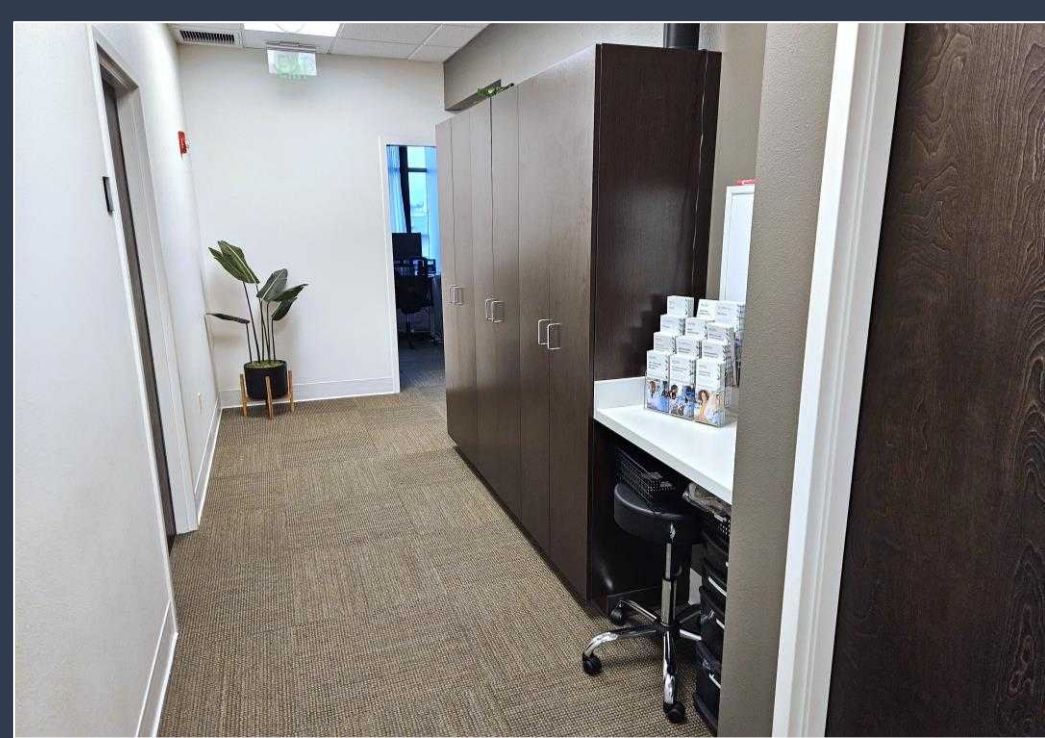
**\$2.10** PSF, NNN  
Est. CAM \$2,300 Per Month

Parcel: 55152.9190

Nice multi-tenant, professional office/medical building located in Liberty Lake with excellent visibility from Interstate 90 with traffic counts of 79,000 cars per day. The building offers good parking and a great tenant mix. Building amenities include an elevator, interior reader board and beautiful park like setting including a waterfall.

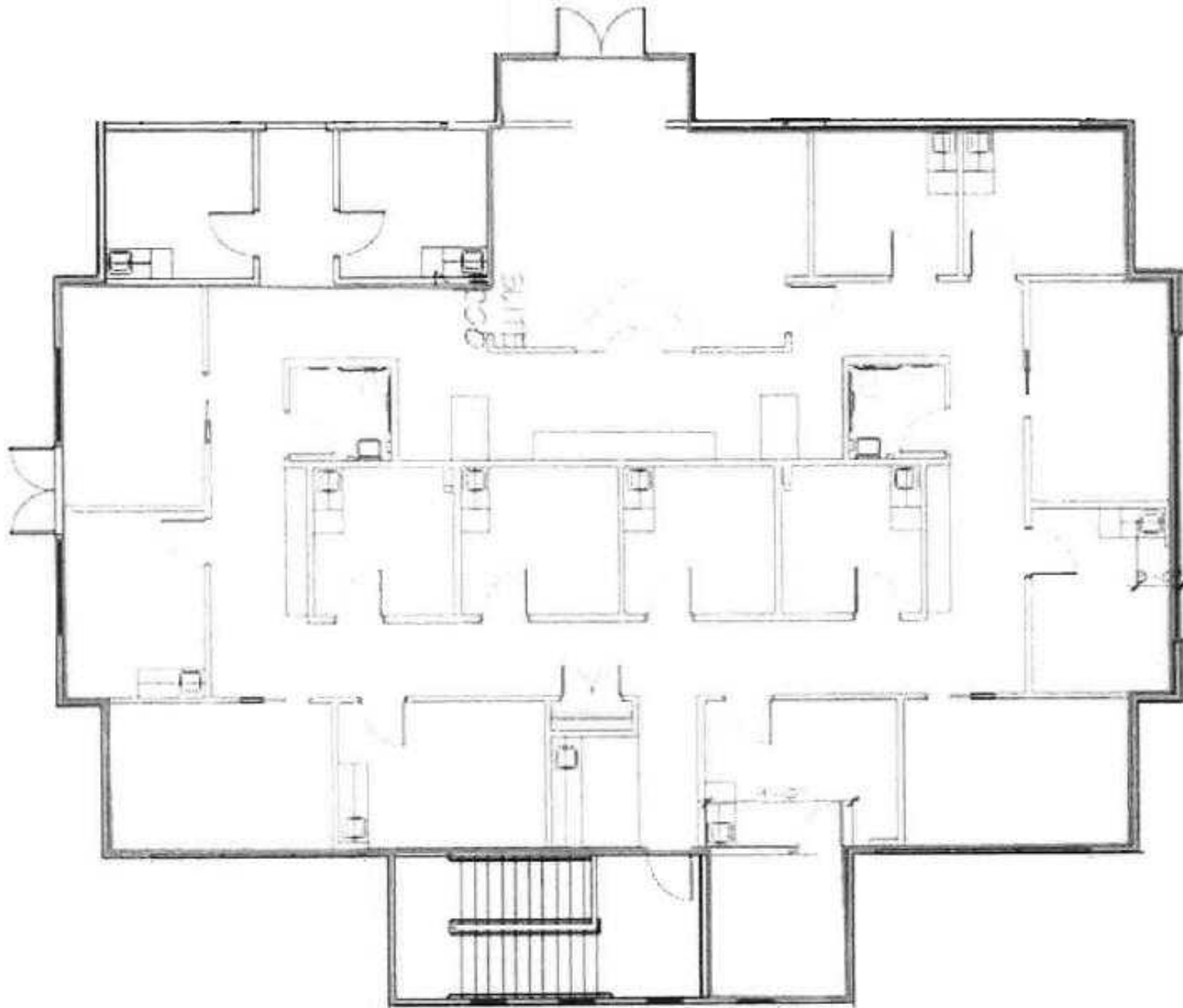
Suite 200 is 3,829 square feet and features a glass front entry door, nice built in reception area, spacious waiting room, 10 private offices, conference room, breakroom, storage closet, built in workstation/bullpen area. Dark custom cabinets are featured throughout, and lots of natural light. For added convenience and privacy, the suite boasts a separate rear entry/exit. Ideal for professional services, creative firms, or growing businesses seeking a turnkey, well-appointed workspace with a premium feel.





# FLOOR PLAN

Images or illustrations are for visual purposes only



**ROB KANNAPIEN, CCIM**

208.704.3832

robk@ccim.net

**CCIMTEAM.COM**



**COLDWELL BANKER  
COMMERCIAL**

# CLOSE UP

Images or illustrations are for visual purposes only

The MANE Collective



gentiva 

RANDALL  
+ HURLEY

- Liberty Lake  
Family Dentistry  
- Liberty Lake  
Children's Academy  
Nancy Animal Center

LabCorp  
Liberty Lake Therapy  
MDRN Fitness  
Level Up Wellness  
Dermatology  
KVINNA  
Sarah Hamilton Face  
Valley OBGYN  
Edward Jones



ROB KANNAPIEN, CCIM

208.704.3832

robk@ccim.net

CCIMTEAM.COM



COLDWELL BANKER  
COMMERCIAL

# NEARBY BUSINESSES

Images or illustrations are for visual purposes only



- Crown Home Services
- Amphenol Network Services
- Achieve Today Homeschool
- BofA Work
- Manga Catering

**GEORGE GEE**  
A GEE AUTOMOTIVE COMPANY

**Mercedes-Benz**  
of Spokane

**Porsche Spokane**

**Appleway Avenue**

**Inerstate 90**

- Family Medicine
- Indigo Multi-Care

- Liberty Lake Family Dentistry
- Liberty Lake Children's Academy
- Legacy Animal Center

- nomnom**
- CENEX**
- Barlows Restaurant**
- Starbucks Coffee**
- Great Clips**
- SAFeway**

**TOPGOLF**

**THE HOME DEPOT**

**UMPQUA BANK**

- The Mat
- Brothers Office Pizzeria

- Mint Condition Dental
- Fuiyama

- F5 Networks
- The MANE Collective
- Bangkok Thai

**WAKE UP EARL**  
The Coffee & Espresso

**TIRE RAMA**  
More Than Just a Tire Store

**O'Reilly**  
AUTO PARTS

**WINNER BANK**

**Bank of America**

**Country Vista Drive**

**Trailhead Golf Course**

**Windermere REAL ESTATE**

**LEGACY VILLAS**  
APARTMENTS

- Lorraine Fine Jewelry
- Eat This Nutrition
- BocoPop
- Liberty Lake Veterinary

- Liberty Lake Veterinary
- Crazy Beagle
- Country Vista Car Wash

- Oral Surgery Plus

**HORIZON**  
CREDIT UNION

**Chevron**



1334 N Whitman Lane  
Liberty Lake, WA 99019

**ROB KANNAPIEN, CCIM**  
208.704.3832  
robk@ccim.net  
**CCIMTEAM.COM**

Data is deemed reliable. No warranty or representation, expressed or implied, is made by Coldwell Banker Schneidmiller Realty, its agents or its employees as to the accuracy of the information contained herein. All information furnished is from sources deemed reliable and submitted subject to errors, omissions, change of terms and conditions, prior sale without notice, lease or financing, or withdrawal without notice. No one should rely solely on the above information, but instead should conduct their own investigation to satisfy themselves. All critical measurements shall be done by Lessee or Buyer. All Images are for illustration or visual purposes only.



**SCHNEIDMILLER REALTY**  
2000 Northwest Blvd  
Coeur d'Alene, ID 83814