



**FOR LEASE**

**108 Central Way**

Kirkland, WA

*High-visibility retail space in the heart of Downtown Kirkland offering flexible potential and a location with unbeatable foot traffic.*

#### PROPERTY HIGHLIGHTS

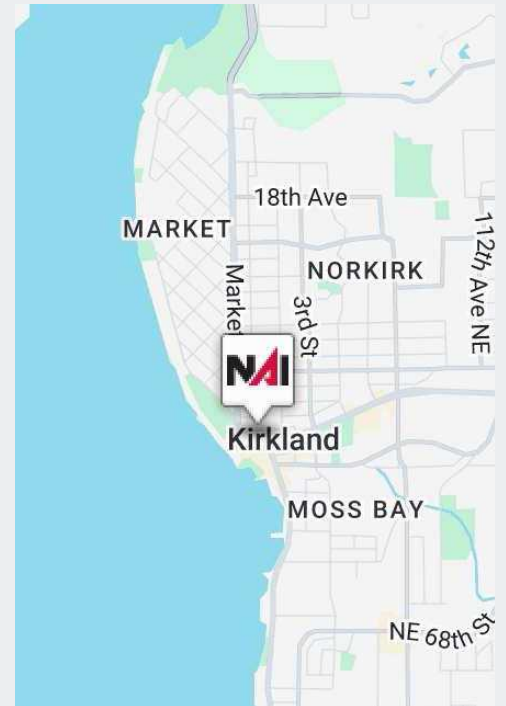
- + 4,213 SF
- + Former Yoga Studio
- + Rental Rate: \$30.00 psf + NNN
- + \$9.00 psf NNN
- + Available Immediately
- + Excellent Location and Visibility
- + CBD Zoning
- + Landlord prohibits any alcohol sales and any hood

**JOHN WERDEL, CCIM**  
Partner  
+1 206 332 1488  
jwerdel@nai-psp.com

**BLAKE STEDMAN**  
Senior Vice President  
+1 425 652 1722  
bstedman@nai-psp.com

**NAI** Puget Sound  
Properties

THE INFORMATION CONTAINED HEREIN HAS BEEN GIVEN TO US BY THE OWNER OF THE PROPERTY OR OTHER SOURCES WE DEEM RELIABLE, WE HAVE NO REASON TO DOUBT ITS ACCURACY, BUT WE DO NOT GUARANTEE IT. ALL INFORMATION SHOULD BE VERIFIED PRIOR TO PURCHASE OR LEASE.

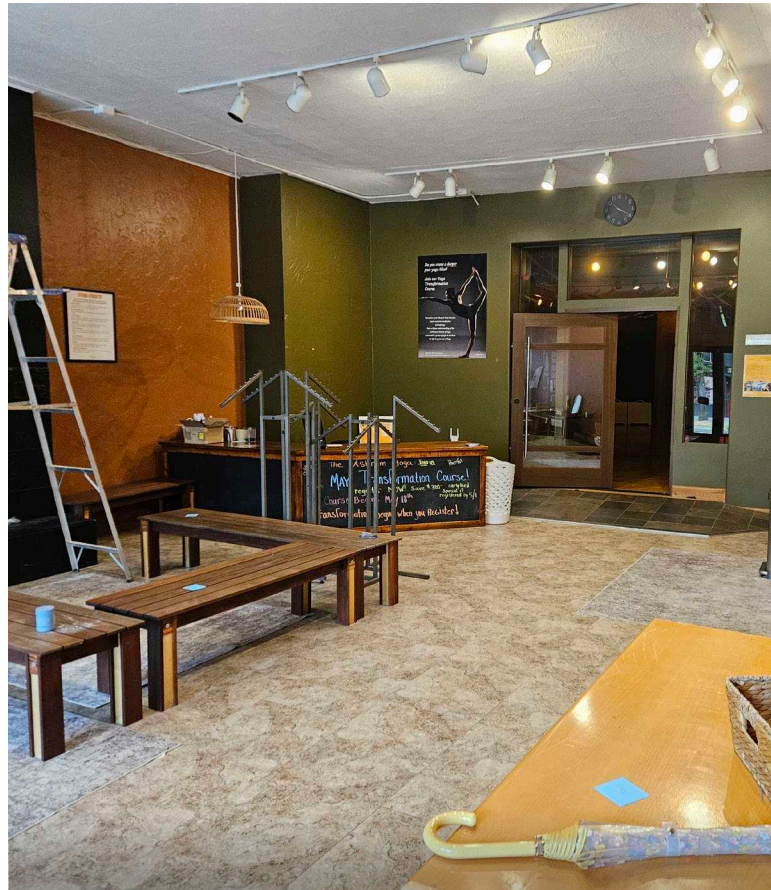
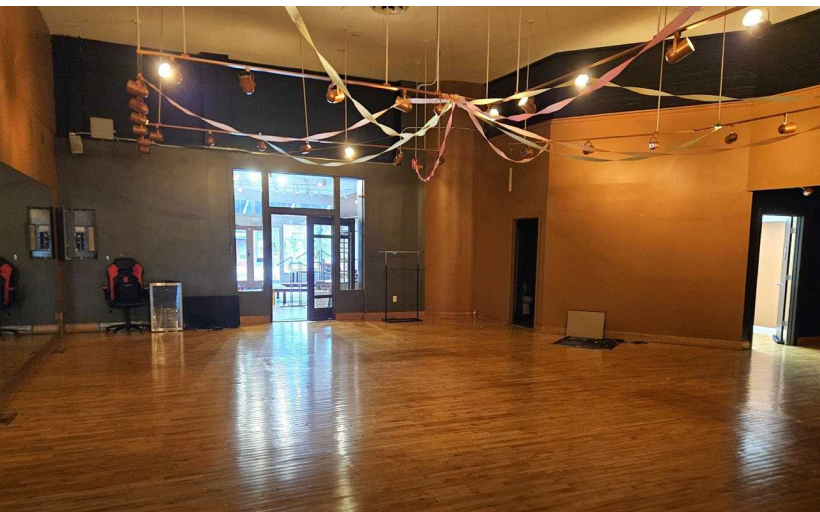


[nai-psp.com](http://nai-psp.com)





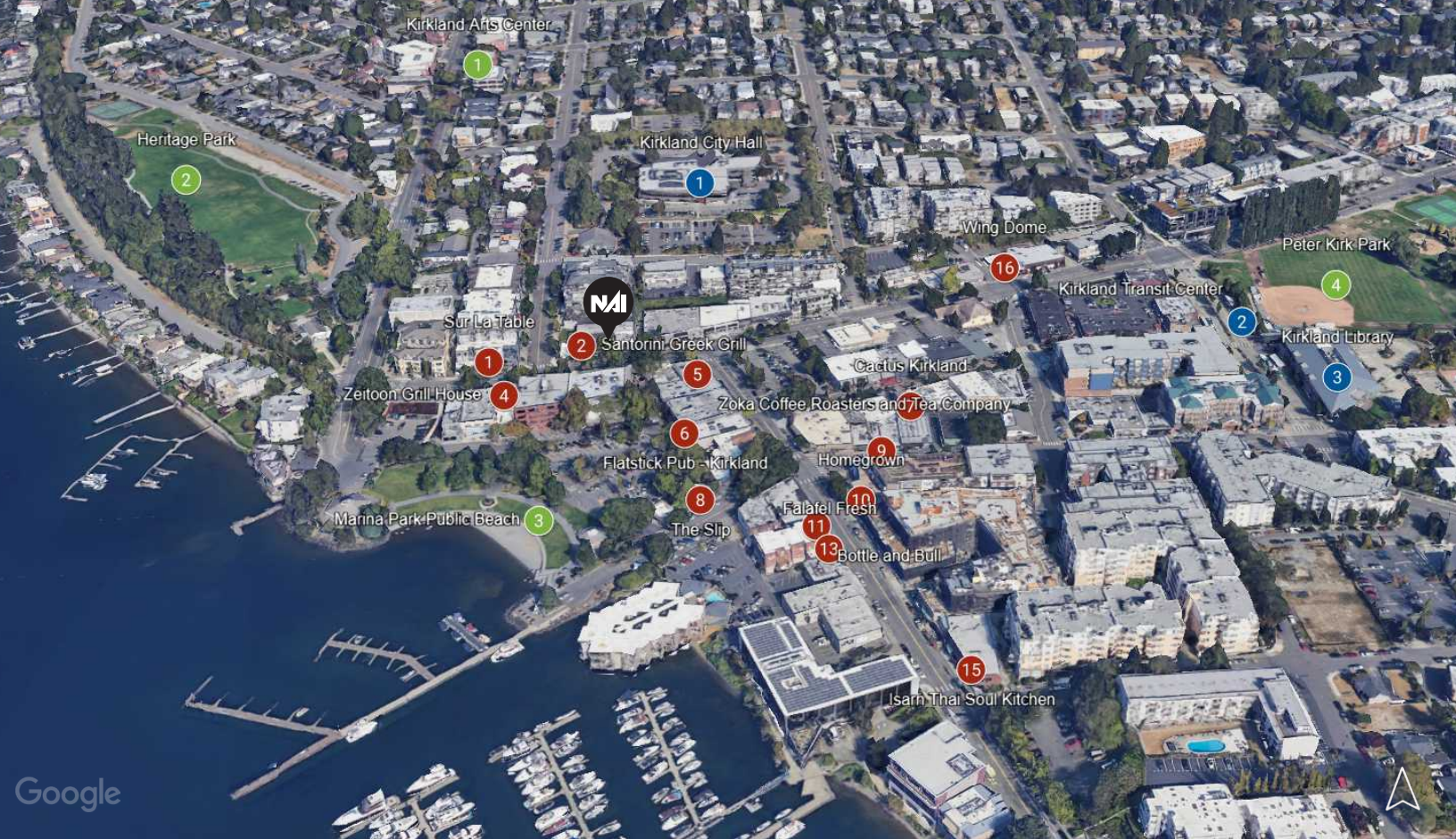
*Space for lease in downtown Kirkland*



**JOHN WERDEL, CCIM**  
Partner  
+1 206 332 1488  
jwerdel@nai-psp.com

**BLAKE STEDMAN**  
Senior Vice President  
+1 425 652 1722  
bstedman@nai-psp.com





## PUBLIC SERVICES

1. Kirkland City Hall
2. Kirkland Transit Center
3. Kirkland Library
4. Storybook Theater
5. Peter Kirk Pool
6. Kirkland Performance Center
7. Peter Kirk Community Center

## PARKS & RECREATION

1. Kirkland Arts Center
2. Heritage Park
3. Marina Park Public Beach
4. Peter Kirk Park

## RESTAURANTS

1. Sur La Table
2. Santorini Greek Grill
3. Coastline Burgers
4. Zeiton Grill House
5. Zoka Coffee Roasters
6. Flatstick Pub
7. Cactus
8. The Slip
9. George's
10. Homegrown
11. Bottle & Bull
12. Juke Poke
13. Falafel Fresh
14. Anthony's HomePort
15. Isarn Thai Soul Kitchen
16. Wing Dome
17. 5 Stones Coffee Co.

**95**  
WALK SCORE

**71**  
BIKE SCORE

**49**  
TRANSIT SCORE

**JOHN WERDEL, CCIM**  
Partner  
+1 206 332 1488  
jwerdel@nai-ppsp.com

**BLAKE STEDMAN**  
Senior Vice President  
+1 425 652 1722  
bstedman@nai-ppsp.com

