



# For Lease

112 Central Way, Kirkland, WA

*Prime second floor office space location in the heart of downtown Kirkland.*

## PROPERTY HIGHLIGHTS

- + Second Floor space with ground floor entrance to stairs
- + Private office, open areas and kitchenette - Suite 112
- + Walking distance to numerous restaurants, cafes, and Marina Park
- + Near Google, Tableau, Kirkland Urban Retail Center
- + Huge signage opportunity
- + Excellent visibility and high-volume auto and foot traffic
- + Near [Marina Park Waterfront](#) & City Parking
- + 95 Walk Score, 71 Bike Score, 49 Transit Score
- + Other tenants include Santorini Greek Grill, Afghan Cuisine, and Skintegrity Medspa

**BLAKE STEDMAN**  
Senior Vice President  
+1 425 652 1722  
bstedman@nai-psp.com

**JOHN WERDEL, CCIM**  
Partner  
+1 206 332 1488  
jwerdel@nai-psp.com



THE INFORMATION CONTAINED HEREIN HAS BEEN GIVEN TO US BY THE OWNER OF THE PROPERTY OR OTHER SOURCES WE DEEM RELIABLE, WE HAVE NO REASON TO DOUBT ITS ACCURACY, BUT WE DO NOT GUARANTEE IT. ALL INFORMATION SHOULD BE VERIFIED PRIOR TO PURCHASE OR LEASE.

TOTAL SF

**1,200 SF**

PRICE/SF

**\$30.00, NNN**

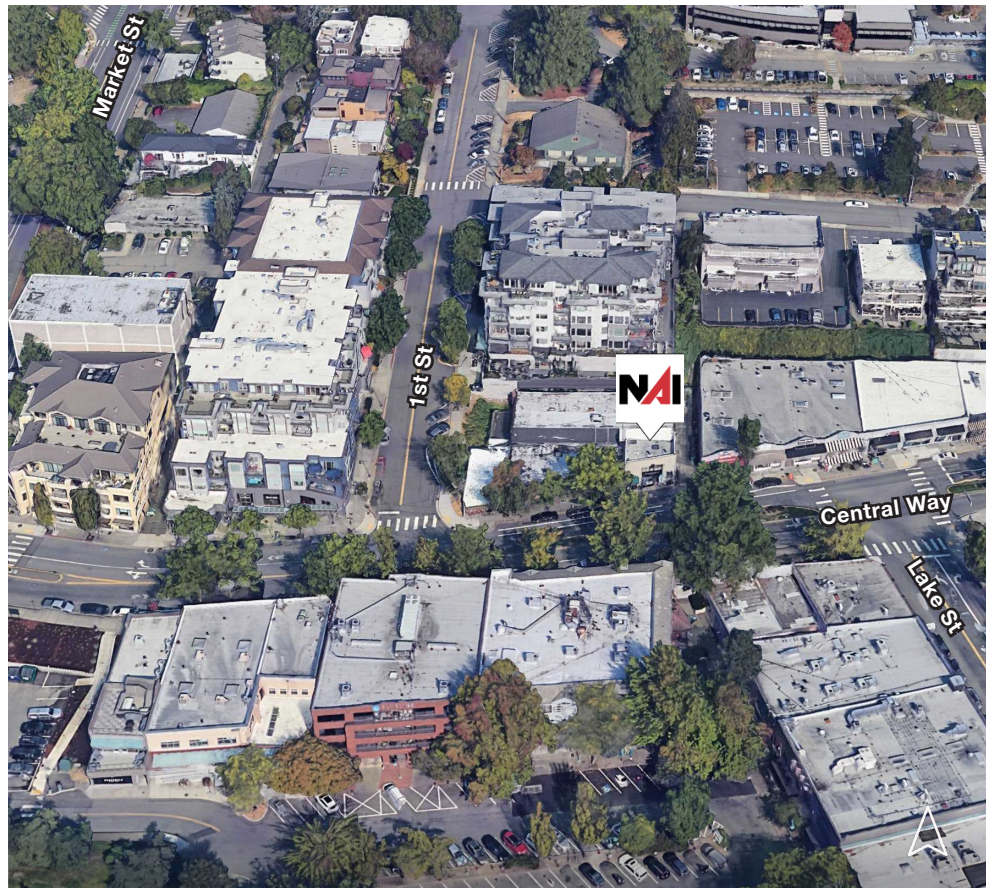
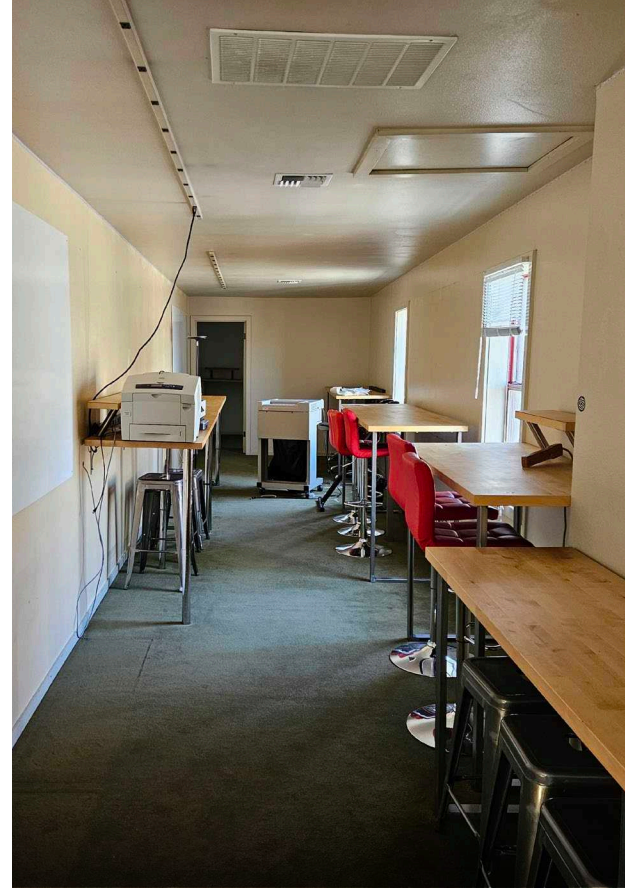
NNN EXPENSES

**\$9.00 PSF\***

\*Excludes water usage

[nai-psp.com](http://nai-psp.com)

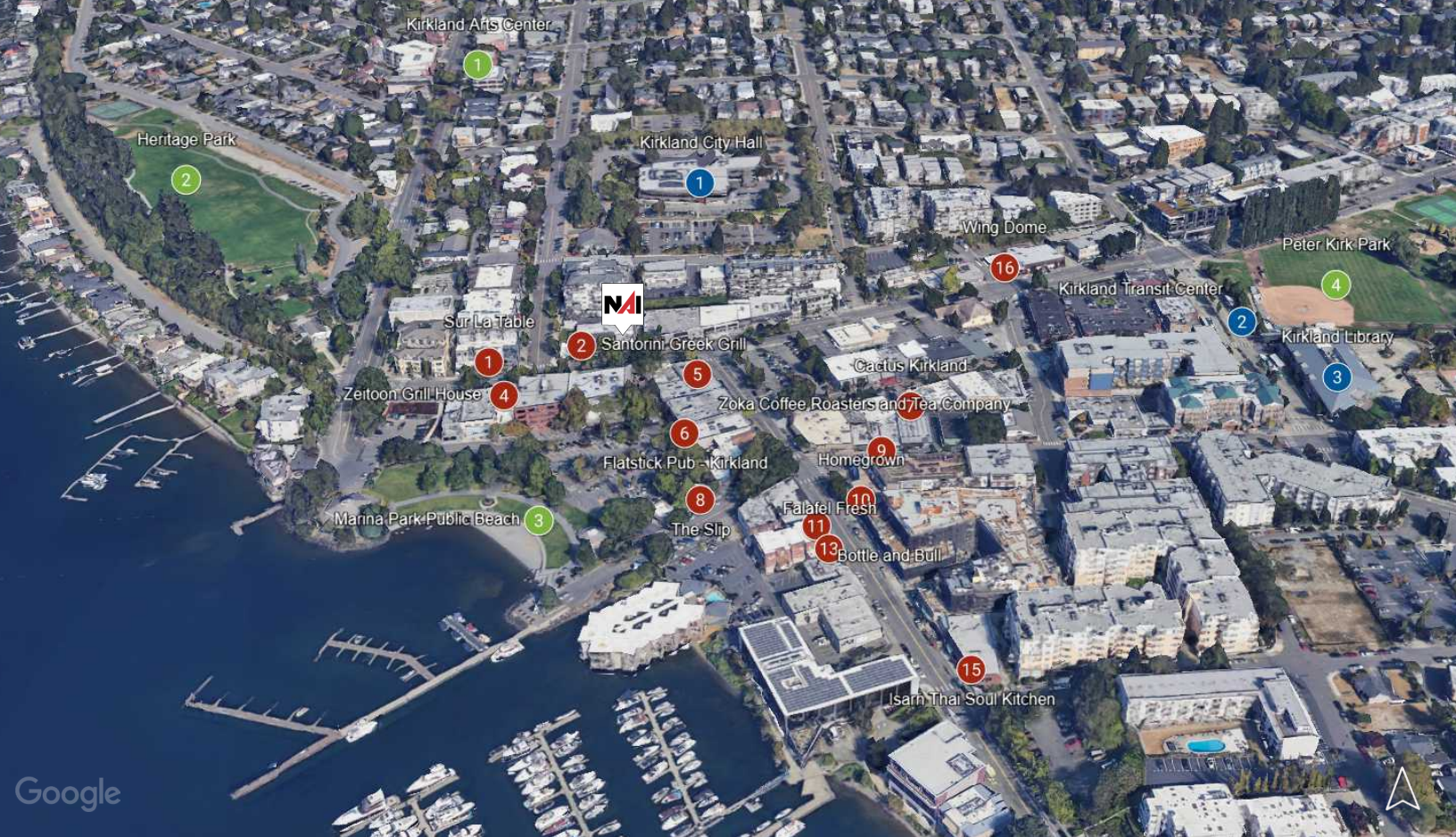
*Second floor space with private office, open areas and kitchenette.*



**BLAKE STEDMAN**  
Senior Vice President  
+1 425 652 1722  
bstedman@nai-psp.com

**JOHN WERDEL, CCIM**  
Partner  
+1 206 332 1488  
jwerdel@nai-psp.com





## PUBLIC SERVICES

1. Kirkland City Hall
2. Kirkland Transit Center
3. Kirkland Library
4. Storybook Theater
5. Peter Kirk Pool
6. Kirkland Performance Center
7. Peter Kirk Community Center

## PARKS & RECREATION

1. Kirkland Arts Center
2. Heritage Park
3. Marina Park Public Beach
4. Peter Kirk Park

## RESTAURANTS

1. Sur La Table
2. Santorini Greek Grill
3. Coastline Burgers
4. Zeitoon Grill House
5. Zoka Coffee Roasters
6. Flatstick Pub
7. Cactus
8. The Slip
9. George's
10. Homegrown
11. Bottle & Bull
12. Juke Poke
13. Falafel Fresh
14. Anthony's HomePort
15. Isarn Thai Soul Kitchen
16. Wing Dome
17. 5 Stones Coffee Co.

**95**  
WALK SCORE

**71**  
BIKE SCORE

**49**  
TRANSIT SCORE

**BLAKE STEDMAN**  
Senior Vice President  
+1 425 652 1722  
bstedman@nai-psp.com

**JOHN WERDEL, CCIM**  
Partner  
+1 206 332 1488  
jwerdel@nai-psp.com

