

FOR LEASE

7,284 SF WAREHOUSE & DISTRIBUTION SPACE

3109 McDougall Avenue | Everett, WA



**NEWMARK**

**MORGAN RICHEY, SIOR**  
morgan.richey@nrmk.com  
425-362-1409

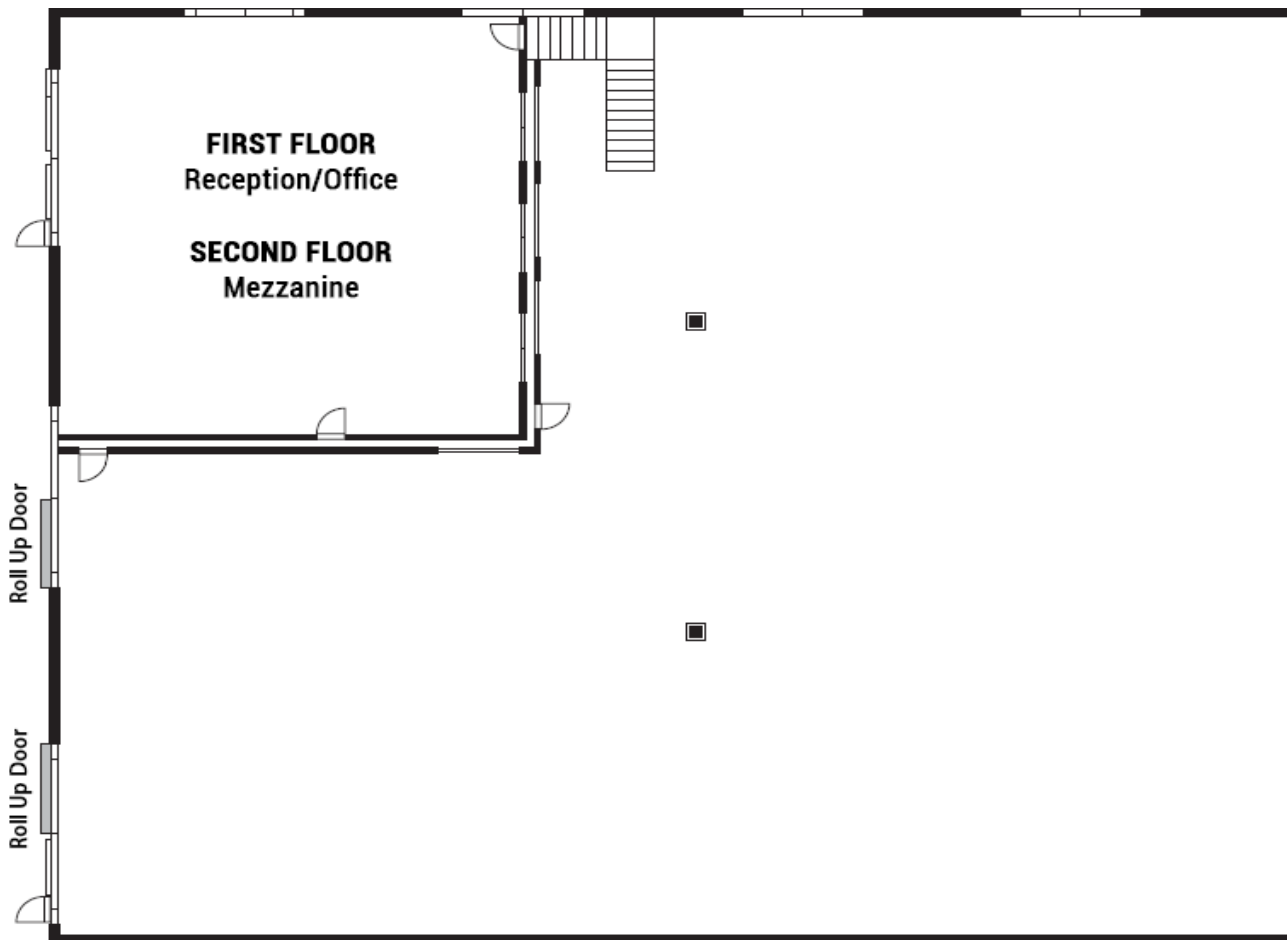
**JOSH SATTERLEE**  
josh.satterlee@nrmk.com  
425-362-1396

**SPENCER SPARKS**  
spencer.sparks@nrmk.com  
425-372-9939

FOR LEASE

## 7,284 SF WAREHOUSE & DISTRIBUTION SPACE

3109 McDougall Avenue | Everett, WA



### BUILDING DETAILS

- 7,284 SF Total
- Clear Height: 20' - 24'
- Loading: 2 Grade-Level
- Notes: Front office/reception, two bathrooms, mezzanine storage

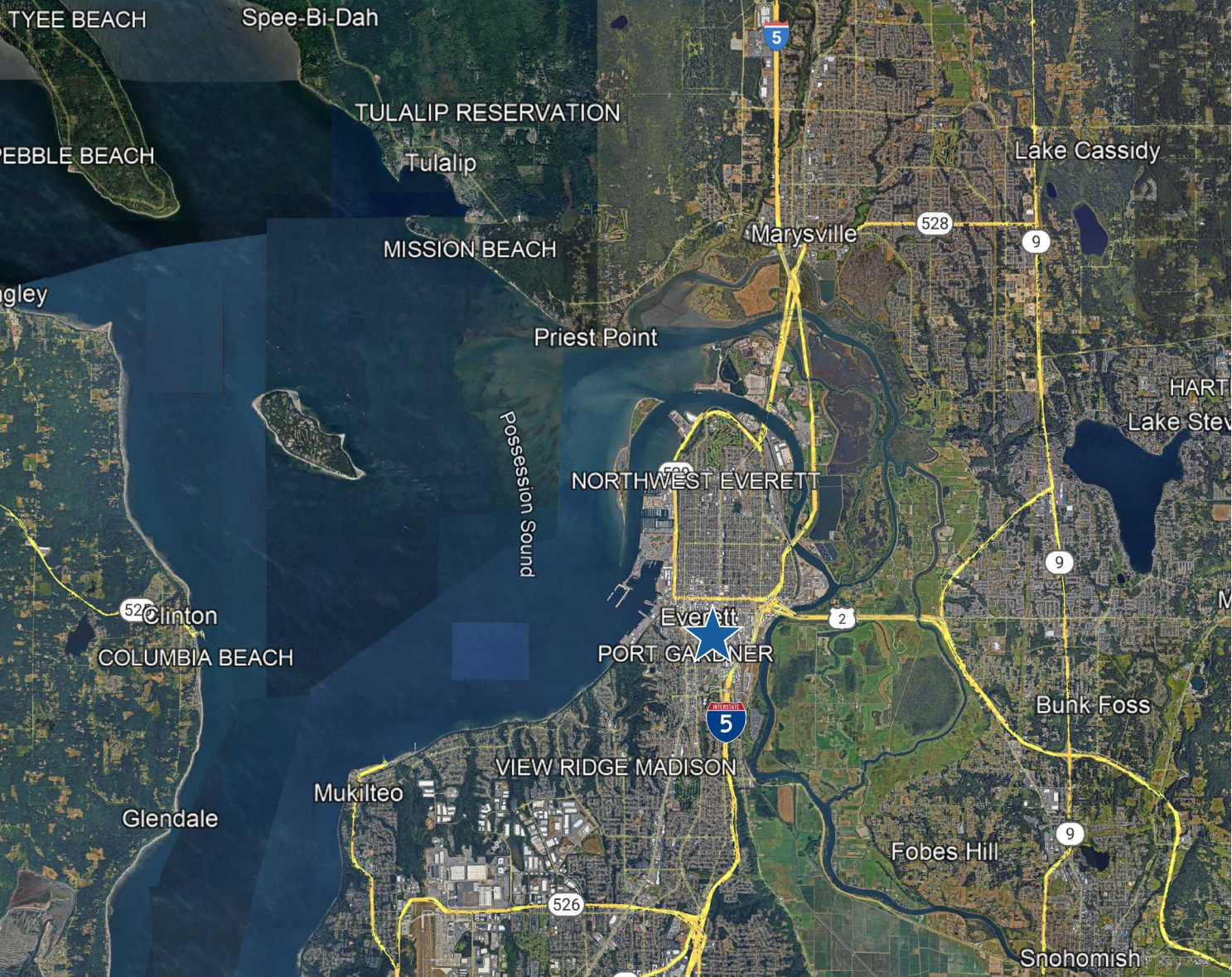
### PROPERTY HIGHLIGHTS

- Zoning: C2
- Call Brokers for Rates

# FOR LEASE

## 7,284 SF WAREHOUSE & DISTRIBUTION SPACE

3109 McDougall Avenue | Everett, WA



### DRIVE TIMES

Interstate-5	2 Minutes
Highway 2	5 Minutes
Downtown Seattle	30 Minutes

The information contained herein has been obtained from sources deemed reliable but has not been verified and no guarantee, warranty or representation, either express or implied, is made with respect to such information. Terms of sale or lease and availability are subject to change or withdrawal without notice.