

11001-11035

118TH PLACE NE

KIRKLAND, WA






FOR LEASE

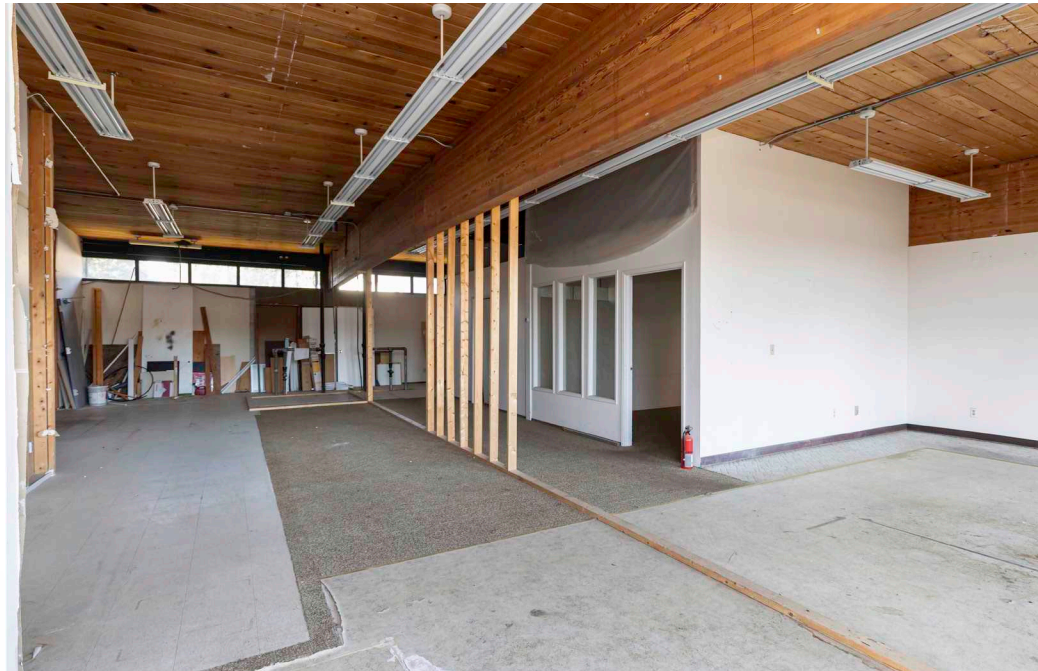
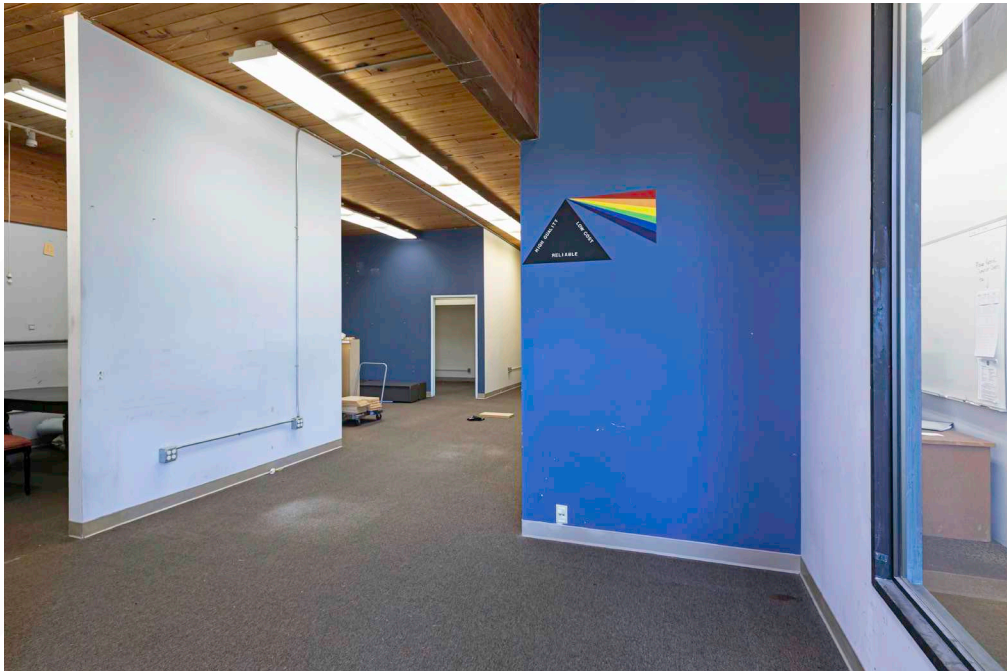
NEWMARK

JOSH SATTERLEE
Associate Director
425.362.1396
josh.satterlee@nmrk.com

SPENCER SPARKS
Associate
425.372.9939
spencer.sparks@nmrk.com

Building Information

-  \$14.00 NNN lease rate
-  Well located directly off of I-405
-  Office/Storage space with flexible shorter term options
-  Close proximity to cafes, restaurants, and the Village at Totem Lake
-  Convenient access to public transportation.



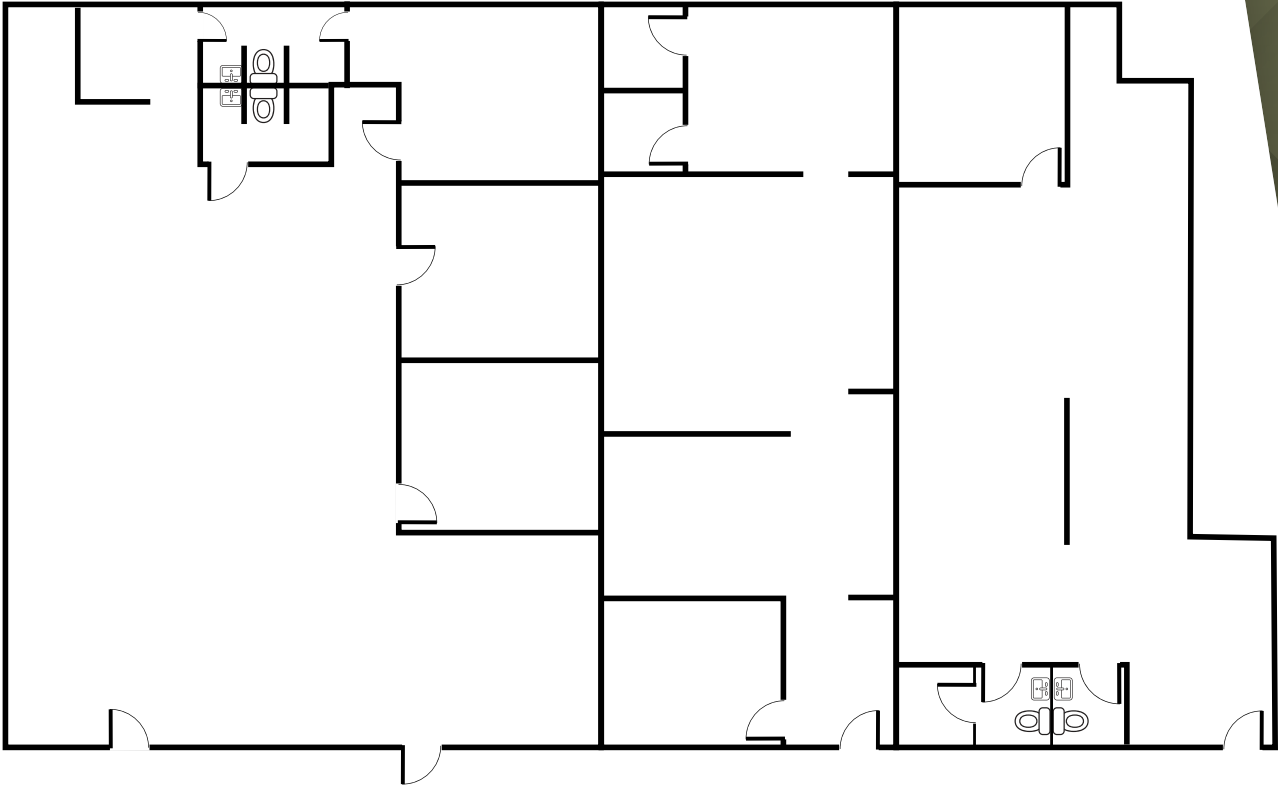
Suite 11023 | Second Floor

3,054 RSF

11001-11035

118TH PLACE NE

KIRKLAND, WA



Floor plan not drawn to scale



11001-11035

118TH PLACE NE

KIRKLAND, WA

JOSH SATTERLEE

Associate Director

425.362.1396

josh.satterlee@nmrk.com

SPENCER SPARKS

Associate

425.372.9939

spencer.sparks@nmrk.com

The distributor of this communication is performing acts for which a real estate license is required. The information contained herein has been obtained from sources deemed reliable but has not been verified and no guarantee, warranty or representation, either express or implied, is made with respect to such information. Terms of sale or lease and availability are subject to change or withdrawal without notice. MP-120 • 02/24

NEWMARK